

0CW10-M52801EN

P R E F A C E

This parts catalog is the 2nd edition of 4TNV98-EPVW/EXPVW/EXPVWC/EXPVWB for VOLVO Construction Equipment.

Published : April, 2019



Fig. No. Fig. Name

Fig. No. Fig. Name

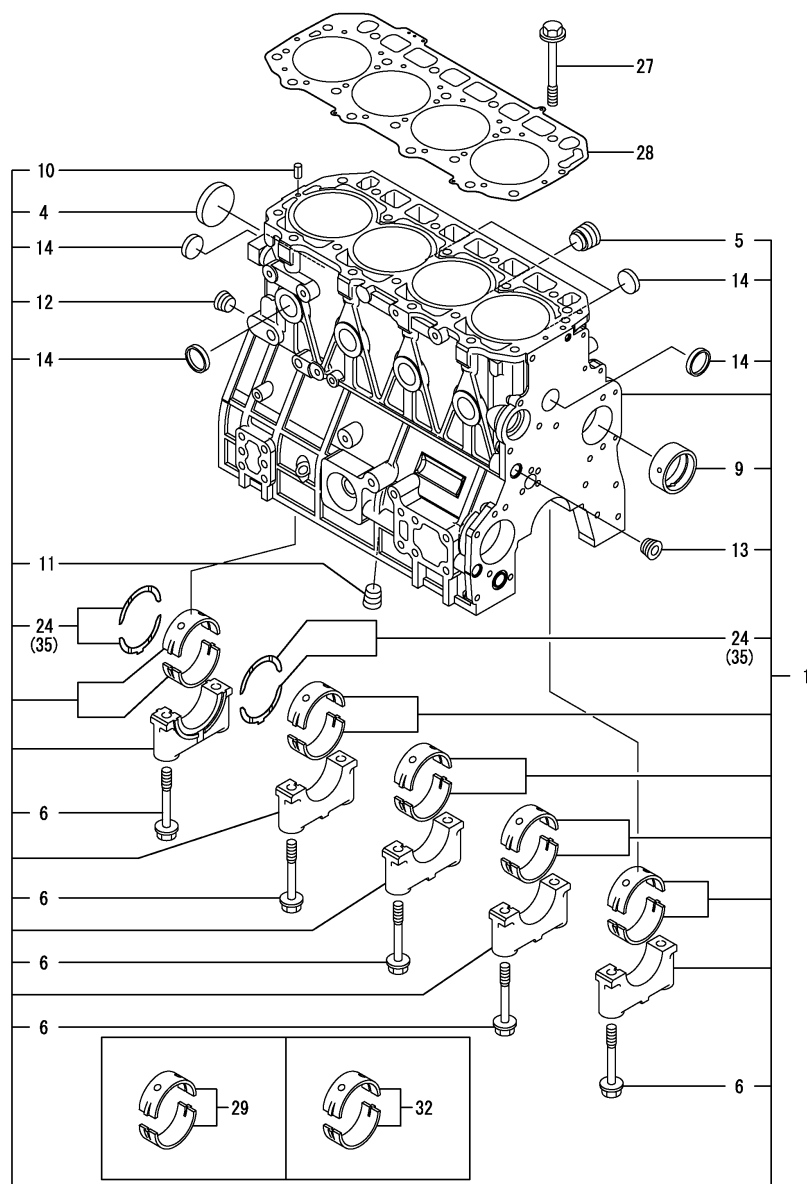
ENGINE

1. CYLINDER BLOCK
2. GEAR HOUSING
3. FLYWHEEL HOUSING & OIL SUMP
4. CYLINDER HEAD & BONNET
5. SUCTION MANIFOLD
6. EXHAUST MANIFOLD
7. CAMSHAFT & DRIVING GEAR
8. CRANKSHAFT & PISTON
9. LUB. OIL SYSTEM
10. COOLING WATER SYSTEM
11. FUEL INJECTION PUMP
12. GOVERNOR
13. FUEL INJECTION VALVE
14. FUEL PIPE
15. STARTER MOTOR
19. (15A)STARTER MOTOR
16. TENSION PULLEY
17. ELECTRONIC CONTROL UNIT(ECU)
18. GASKET SET



(A)=4TNV98-EPVW
(B)=4TNV98-EXPVW
(C)=4TNV98-EXPVWC

(D)=4TNV98-EXPVWB
(E)=
(F)=



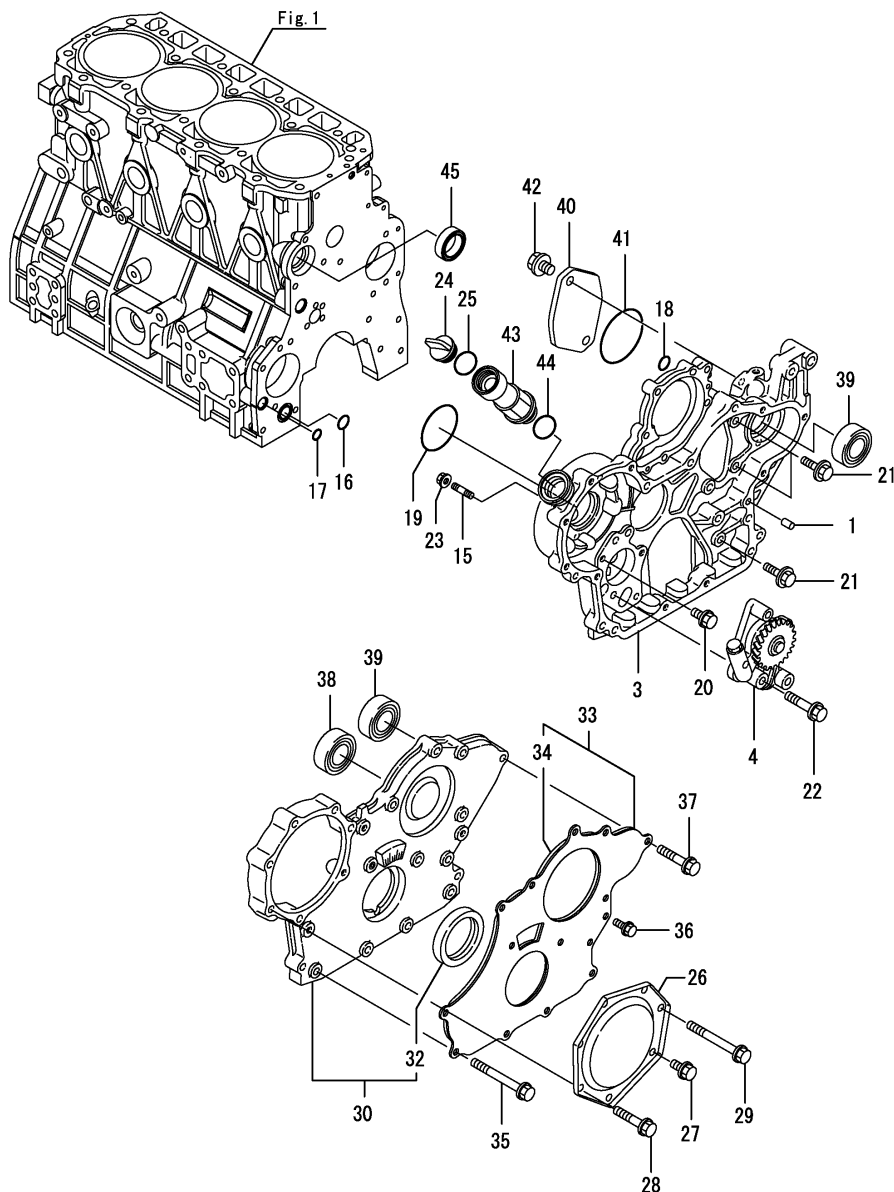
No.	Lev.	Parts No.	Description	Q'ty						I	R
				(A)	(B)	(C)	(D)	(E)	(F)		
1	1	729927-01560	BLOCK ASSY, CYLINDER	1	1	1	1				
4	2	129900-01250	PLUG, 55	1	1	1	1				
5	2	171051-01921	PLUG, NPTF1	1	1	1	1				
6	2	129900-02020	BOLT, METAL CAP	10	10	10	10				
9	2	129900-02410	BUSH, CAMSHAFT	1	1	1	1				
10	2	22351-060012	PIN, SPRING 6.0X12	2	2	2	2				
11	2	23876-030000	PLUG, R03	1	1	1	1				
12	2	23876-030000	PLUG, R03	1	1	1	1				
13	2	23876-030000	PLUG, R03	1	1	1	1				
14	2	27241-300000	PLUG 30	8	8	8	8				
24	2	129900-02931	METAL ASSY, THRUST	2	2	2	2				
24-1	2	129927-02930	BEARING ASSY, THRUST	2	2	2	2				R
(A=*2018.02.) (B=*2018.02.) (C=E13459) (D=*2018.02.)											
27	1	129900-01200	BOLT, CYLINDER HEAD	18	18	18	18				
28	1	129907-01331	GASKET, HEAD	1	1	1	1				
29	1	729900-02801	METAL ASSY, MAIN	5	5	5	5				1
29-1	1	729927-02800	BEARING ASSY, MAIN	5	5	5	5				R 1
(A=*2018.02.) (B=*2018.02.) (C=E13459) (D=*2018.02.)											
32	1	129900-02341	METAL ASSY, MAIN .25	5	5	5	5				2
32-1	1	129927-02340	BEARING ASSY,MAIN US	5	5	5	5				R 2
(A=*2018.02.) (B=*2018.02.) (C=E13459) (D=*2018.02.)											
35	1	129900-02941	METAL ASSY, 0.25 OS	2	2	2	2				3
35-1	1	129927-02940	BEARING,THRUST0.25OS	2	2	2	2				R 3
(A=*2018.02.) (B=*2018.02.) (C=E13459) (D=*2018.02.)											

Remarks

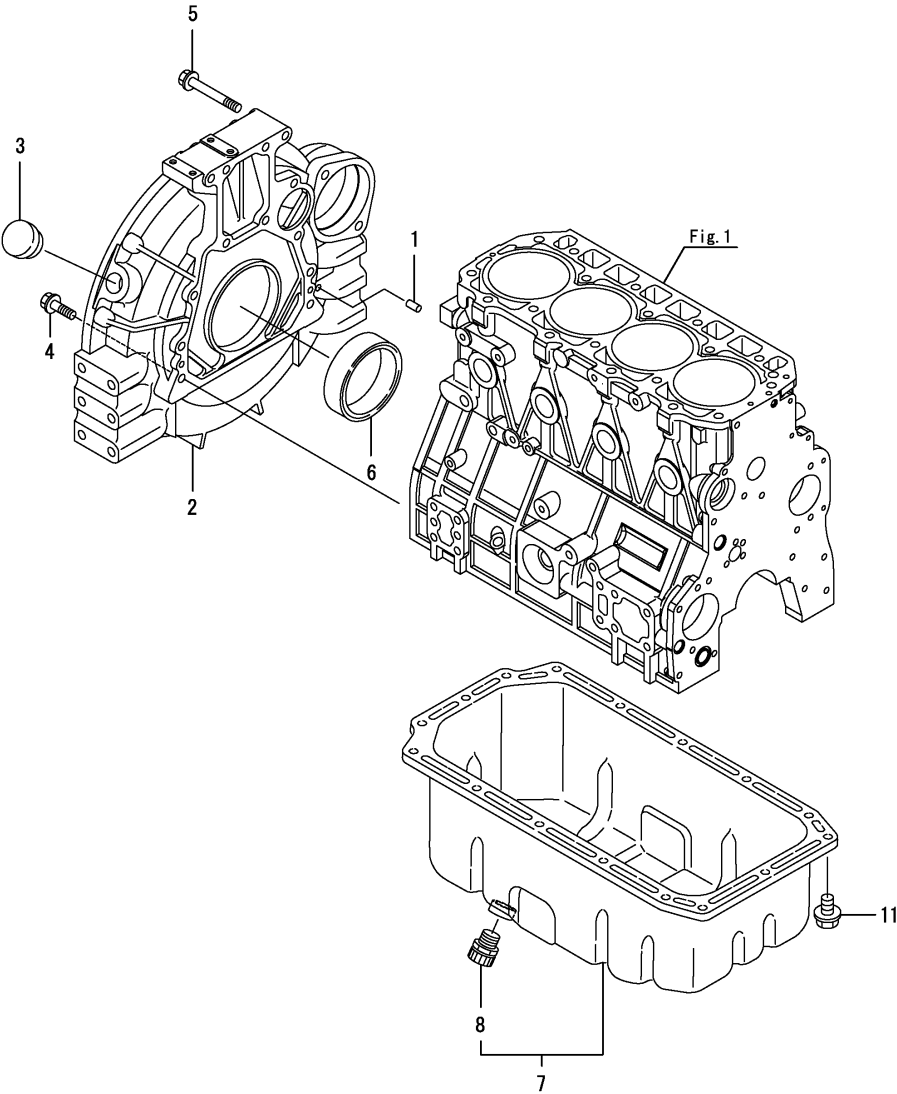
- (1)Spare parts.
- (2)Under-sized(U.S.=0.25) parts.
- (3)Over-sized(O.S.=0.25) parts.

(A)=4TNV98-EPVW
(B)=4TNV98-EXPVW
(C)=4TNV98-EXPVWC

(D)=4TNV98-EXPVWB
(E)=
(F)=



No.	Lev.	Parts No.	Description	Q'ty						I	R
				(A)	(B)	(C)	(D)	(E)	(F)		
1	1	129100-01580	PIN, PARALLEL 8X16	4	4	4	4				
3	1	129962-01500	CASE, GEAR	1	1	1	1				
4	1	129900-32001	PUMP ASSY, OIL	1	1	1	1				
15	1	26216-100302	STUD, M10X 30	4	4	4	4				
16	1	129900-32030	O-RING, P20	1	1	1	1				
17	1	129900-32040	O-RING, P14	1	1	1	1				
18	1	24311-000070	O-RING, 1AP7.0	1	1	1	1				
19	1	24351-030750	O-RING, 1A3075	1	1	1	1				
20	1	26106-080162	BOLT, M8X 16 PLATED	1	1	1	1				
21	1	26106-080202	BOLT, M8X 20 PLATED	3	3	3	3				
22	1	26106-080452	BOLT, M8X 45 PLATED	3	3	3	3				
23	1	26306-100002	NUT, M10	4	4	4	4				
24	1	124160-01751	CAP, FILLER	1	1	1	1				
25	1	24311-000320	O-RING, 1AP32.0	1	1	1	1				
26	1	129900-01740	COVER, PUMP TIMING	1							
26-1	1	129951-01740	COVER, PUMP TIMING	1	1	1	1				N
(A=E02739)											
27	1	26106-080162	BOLT, M8X 16 PLATED	1							
27-1	1	26106-080202	BOLT, M8X 20 PLATED	1	1	1	1				N
(A=E02739)											
28	1	26106-080402	BOLT, M8X 40 PLATED	5							
28-1	1	26106-080452	BOLT, M8X 45 PLATED	5	5	5	5				N
(A=E02739)											
29	1	26106-080752	BOLT, M8X 75 PLATED	1	1	1	1				
30	1	729907-01559	COVER ASSY, CASE	1	1	1	1				
32	2	129916-01800	SEAL, OIL	1	1	1	1				
33	1	129900-01850	COVER ASSY, CASE	1	1	1	1				
34	2	129900-01870	SPONGE, COVER	1	1	1	1				
35	1	26106-080702	BOLT, M8X 70 PLATED	6	6	6	6				
36	1	26106-080162	BOLT, M8X 16 PLATED	3	3	3	3				
37	1	26106-080402	BOLT, M8X 40 PLATED	5	5	5	5				
38	1	129900-14140	BEARING, BALL 6205	1	1	1	1				
39	1	129900-26250	BEARING, BALL 6206C3	2	2	2	2				
40	1	121023-26071	COVER, PUMP	1	1	1	1				
41	1	24321-000850	O-RING, 1AG85.0	1	1	1	1				
42	1	26106-100202	BOLT, M10X 20 PLATED	2	2	2	2				
43	1	171031-11741	PIPE, FILLER	1	1	1	1				
44	1	24311-000320	O-RING, 1AP32.0	1	1	1	1				
45	1	129927-42140	GASKET, PUMP OUTLET	1	1	1	1				W
(A=*2014.09.) (B=E12061) (C=E12087)											



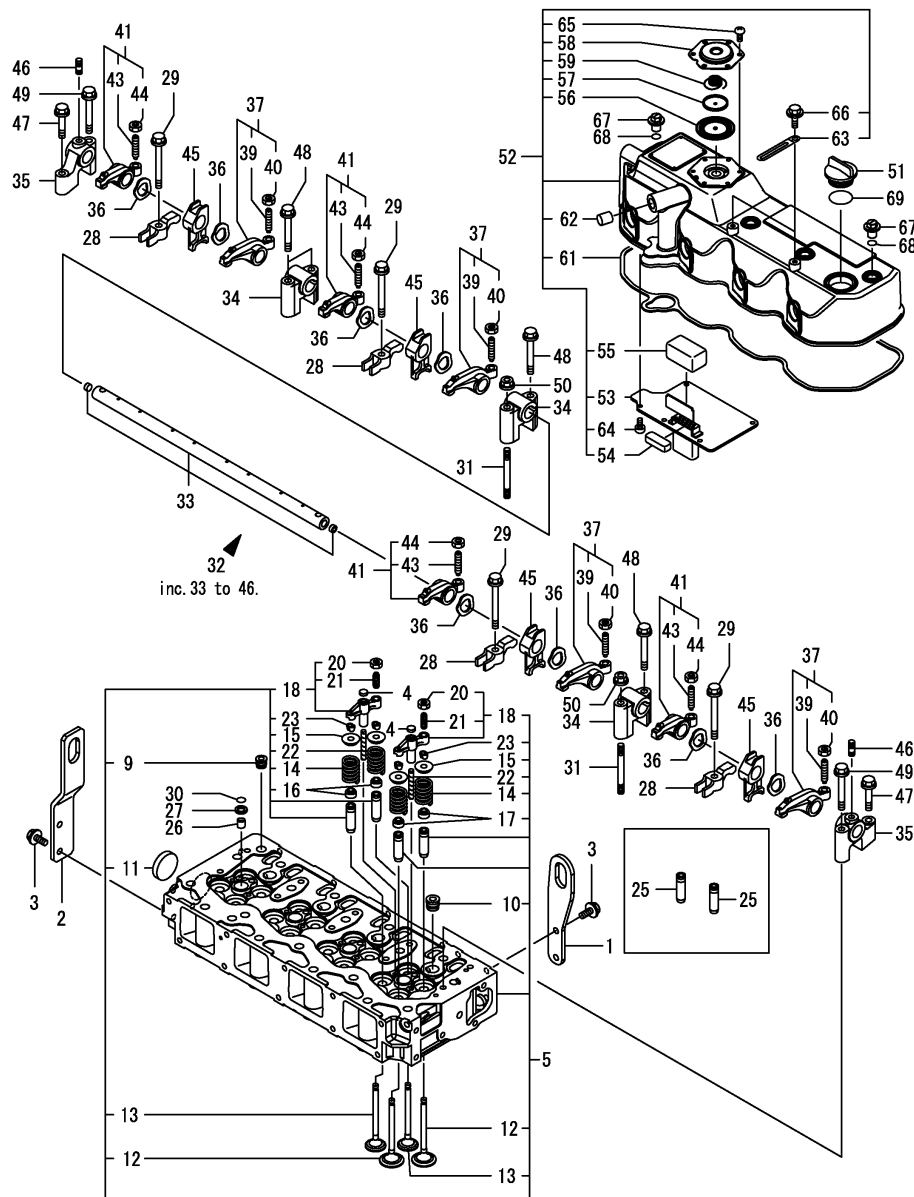
(A)=4TNV98-EPVW
(B)=4TNV98-EXPVW
(C)=4TNV98-EXPVWC

0CW10-M52801 Fig.3

(D)=4TNV98-EXPVWB
(E)=
(F)=

No.	Lev.	Parts No.	Description	Q'ty						I	R
				(A)	(B)	(C)	(D)	(E)	(F)		
1	1	129100-01580	PIN, PARALLEL 8X16	2	2	2	2				
2	1	129900-01620	HOUSING, FLYWHEEL	1	1	1	1				
3	1	119620-01750	CAP, WHEEL COVER	1	1	1	1				
4	1	26206-100352	BOLT, M10X 35 PLATED	9	9	9	9				
5	1	26206-100702	BOLT, M10X 70 PLATED	4	4	4	4				
6	1	129916-01790	SEAL, D115/95XT11	1	1	1	1				
7	1	129906-01700	OIL PAN ASSY	1	1	1	1				
8	2	119640-01640	PLUG, DRAIN M22	1	1	1	1				
11	1	26106-080122	BOLT, M8X 12 PLATED	16	16	16	16				

(A)=4TNV98-EPVW
 (B)=4TNV98-EXPVW
 (C)=4TNV98-EXPVWC

 (D)=4TNV98-EXPVWB
 (E)=
 (F)=


No.	Lev.	Parts No.	Description	Q'ty						I	R
				(A)	(B)	(C)	(D)	(E)	(F)		
1	1	129907-07900	LIFTER, ENGINE	1	1	1	1				
2	1	129939-07920	LIFTER	1	1	1	1				
3	1	26106-080162	BOLT, M8X 16 PLATED	4	4	4	4				
4	1	123907-11550	SEAT, VALVE BRIDGE	8	8	8	8				
5	1	129927-11700	HEAD ASSY, CYLINDER	1	1	1	1				
9	2	23876-020000	PLUG, R02	1	1	1	1				
10	2	23876-030000	PLUG, R03	4	4	4	4				
11	2	27241-400000	PLUG, 40	1	1	1	1				
12	2	129907-11100	VALVE, INTAKE	8	8	8	8				
13	2	129907-11110	VALVE, EXHAUST	8	8	8	8				
14	2	129907-11120	SPRING, VALVE	16	16	16	16				
15	2	119620-11180	RETAINER, SPRING	16	16	16	16				
16	2	119803-11340	SEAL, VALVE STEM	8	8	8	8				
17	2	124160-11340	SEAL, VALVE STEM	8	8	8	8				
18	2	129907-11510	BRIDGE ASSY, VALVE	8	8	8	8				
20	3	129150-11750	NUT, M8XP1.0	8	8	8	8				
21	3	123907-11830	ADJUSTER, BRIDGE	8	8	8	8				
22	2	123907-11820	GUIDE, BRIDGE	8	8	8	8				
23	2	27310-070001	COTTER, 7	16	16	16	16				
25	1	129907-11800	GUIDE, VALVE	16	16	16	16				1
26	1	119802-11870	PROTECTOR, NOZZLE	4	4	4	4				
27	1	119625-11880	SEAT, NOZZLE	4	4	4	4				
28	1	129907-11910	RETAINER, NOZZLE	4	4	4	4				
28-1	1	129907-11960	RETAINER, NOZZLE	4	4	4	4				R
(A)=*2018.08.) (B)=*2018.08.) (C)=E13567) (D)=*2018.08.)											
29	1	129907-11950	BOLT, VALVE HOLDER	4	4	4	4				
30	1	24311-000120	O-RING, 1AP12.0	4	4	4	4				
31	1	119593-11301	STUD, M8X80	2	2	2	2				
32	1	129907-11341	SUPPORT ASSY, ROCKER	1	1	1	1				
33	2	129907-11250	SHAFT, ROCKER ARM	1	1	1	1				
34	2	129907-11260	SUPPORT, ROCKER A	3	3	3	3				
35	2	129907-11270	SUPPORT, ROCKER B	2	2	2	2				
36	2	123907-11280	WASHER, WAVE	8	8	8	8				
37	2	129907-11650	ARM ASSY, ROCKER INT	4	4	4	4				
39	3	129150-11230	SCREW, VALVE ADJUST	4	4	4	4				
40	3	129150-11750	NUT, M8XP1.0	4	4	4	4				
41	2	129907-11660	ARM ASSY, ROCKER EXH	4	4	4	4				
43	3	129150-11230	SCREW, VALVE ADJUST	4	4	4	4				
44	3	129150-11750	NUT, M8XP1.0	4	4	4	4				
45	2	129907-11920	RETAINER, NOZZLE	4	4	4	4				
46	2	26226-080222	STUD, M8X 22	2	2	2	2				
47	1	26106-080402	BOLT, M8X 40 PLATED	2	2	2	2				
48	1	26106-080602	BOLT, M8X 60 PLATED	4	4	4	4				
49	1	26106-080602	BOLT, M8X 60 PLATED	2	2	2	2				
50	1	26306-080002	NUT, M8	2	2	2	2				
51	1	124160-01751	CAP, FILLER	1	1	1	1				
52	1	129927-11320	BONNET ASSY, HEAD	1	1	1	1				
52-1	1	129922-11320	BONNET ASSY							1	N
(D)=E13444)											
53	2	129907-03011	PLATE, BAFFLE	1	1	1	1				
54	2	129907-03061	BAFFLE, BREATHER	1	1	1	1				

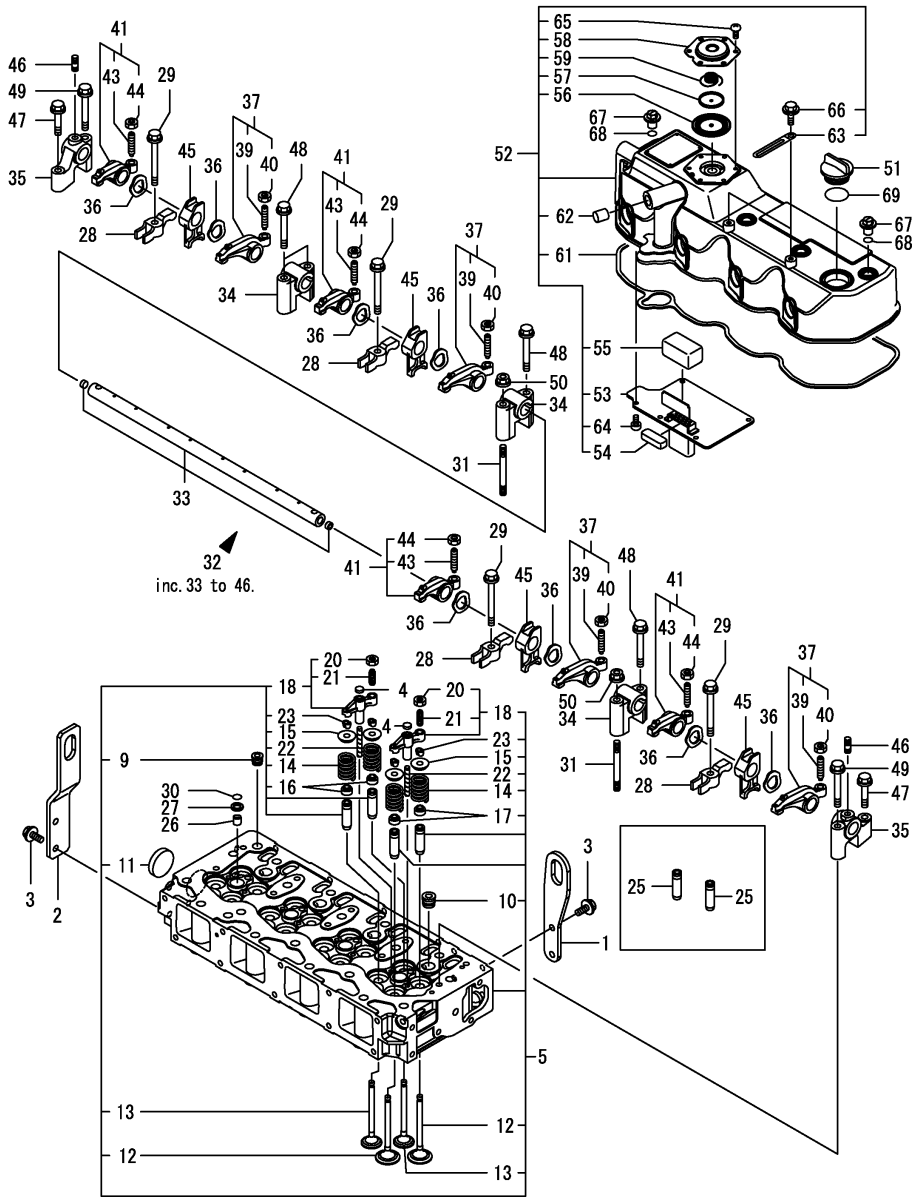
Remarks

(1)Spare parts.

 N:Old $\xrightarrow{\text{Yes}}$ New, Q:Old $\xrightarrow{\text{No}}$ New, R:Old $\xrightarrow{\text{Yes}}$ New, S:Old $\xrightarrow{\text{No}}$ New, W:Add, Z:Discontinued, F:Interchangeable by set, K:Q'ty Change
 ++ CONTINUE ++
 Copyright (C) 2019 YANMAR GLOBAL CS CO., LTD. All RightsReserved.

(A)=4TNV98-EPVW
(B)=4TNV98-EXPVW
(C)=4TNV98-EXPVWC

(D)=4TNV98-EXPVWB
(E)=
(F)=



No.	Lev.	Parts No.	Description	Q'ty						I	R
				(A)	(B)	(C)	(D)	(E)	(F)		
55	2	129907-03070	BAFFLE, BREATHER	1	1	1	1				
56	2	123907-03100	DIAPHRAGM, BREATHER	1	1	1	1				
57	2	123907-03110	PLATE, CENTER	1	1	1	1				
58	2	123907-03120	PLATE, BREATHER	1	1	1	1				
58-1	2	129922-03120	PLATE, BREATHER				1				N
(D=E13444)											
59	2	123907-03140	SPRING, DIAPHRAGM	1	1	1	1				
61	2	129933-11310	GASKET, BONNET	1	1	1	1				
62	2	119640-61400	PLUG	1	1	1	1				
63	2	175339-79700	CLIP	2	2	2	2				
64	2	22857-500100	SCREW, 5X10	6	6	6	6				
65	2	22857-500100	SCREW, 5X10	6	6	6	6				
66	2	26106-060122	BOLT, M6X 12 PLATED	2	2	2	2				
67	1	124160-11360	KNOB, BONNET	4	4	4	4				
68	1	24311-000120	O-RING, 1AP12.0	4	4	4	4				
69	1	24311-000320	O-RING, 1AP32.0	1	1	1	1				

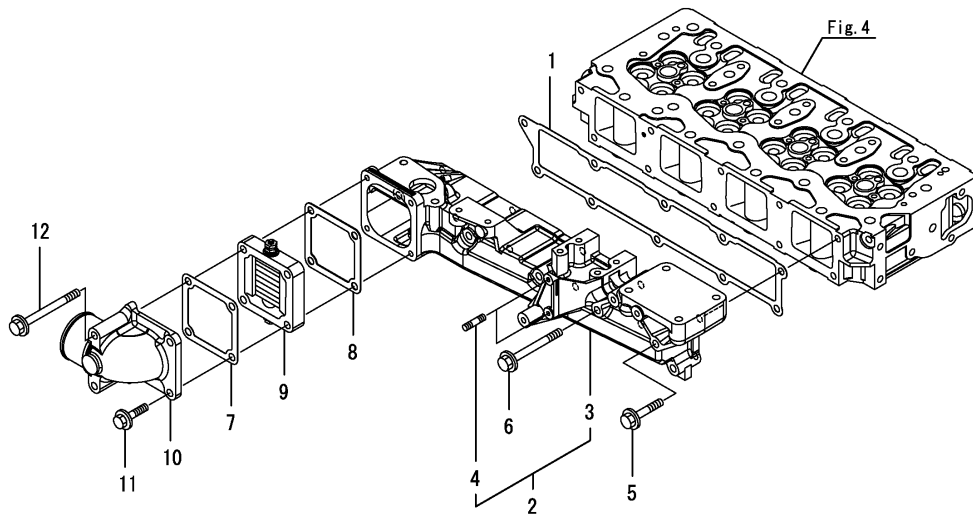
Remarks
(1)Spare parts.

(A)=4TNV98-EPVW
(B)=4TNV98-EXPVW
(C)=4TNV98-EXPVWC

(D)=4TNV98-EXPVWB

$$(E)=$$
$$(F)=$$

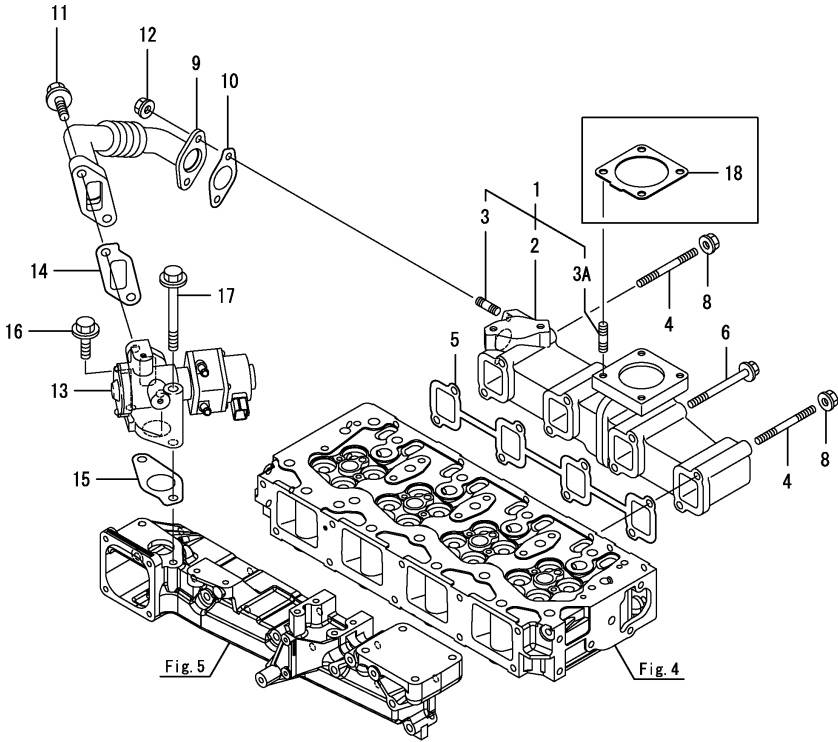
No.	Lev.	Parts No.	Description	Q'ty					I	R
				(A)	(B)	(C)	(D)	(E)	(F)	
1	1	129907-12110	GASKET, MANIFOLD	1	1	1	1			
2	1	129939-12150	MANIFOLD ASSY,INTAKE	1	1	1	1			
3	2	129939-12100	MANIFOLD, AIR INTAKE	1	1	1	1			
4	2	26216-060202	STUD, M6X 20	2	2	2	2			
5	1	26106-080452	BOLT, M8X 45 PLATED	6	6	6	6			
6	1	26106-080802	BOLT, M8X 80 PLATED	4	4	4	4			
7	1	119129-77020	GASKET, AIR HEATER	1	1	1	1			
8	1	121850-77021	GASKET, AIR HEATER	1	1	1	1			
9	1	119005-77051	HEATER, AIR	1	1	1	1			
10	1	119129-77520	BEND, INLET	1	1	1	1			
11	1	26106-080402	BOLT, M8X 40 PLATED	2	2	2	2			
12	1	26106-080902	BOLT, M8X 90 PLATED	2	2	2	2			



(A)=4TNV98-EPVW
(B)=4TNV98-EXPVW
(C)=4TNV98-EXPVWC

(D)=4TNV98-EXPVWB
(E)=
(F)=

No.	Lev.	Parts No.	Description	Q'ty						I	R
				(A)	(B)	(C)	(D)	(E)	(F)		
1	1	129927-13150	MANIFOLD ASSY	1	1	1	1				
2	2	129927-13100	MANIFOLD, EXHAUST	1	1						
2-1	2	129927-13101	MANIFOLD, EXHAUST	1	1	1	1				R
(A=*2012.06.) (B=E07581)											
3	2	129418-18320	STUD, M8X20	2	2	2	2				
3A	2	119131-18320	STUD, M8X22	4	4	4	4				
4	1	129263-13210	STUD, M8X90	2	2	2	2				
5	1	129900-13251	GASKET, MANIFOLD	1	1	1	1				
6	1	119802-13680	BOLT, M8X90 10.9T	6	6	6					
6-1	1	129E00-13650	BOLT, M8X90 10.9T	6	6	6	6				N
(A=*2015.02.) (B=E13075) (C=E13044)											
8	1	26306-080002	NUT, M8	2	2	2	2				
9	1	129927-13800	PIPE ASSY, EGR	1	1	1	1				
10	1	129927-13810	GASKET, EGR PIPE	1	1	1	1				
11	1	26106-100302	BOLT, M10X 30 PLATED	2	2	2	2				
12	1	26306-080002	NUT, M8	2	2	2	2				
13	1	129928-13900	VALVE, EGR	1	1	1	1				
14	1	129927-13910	GASKET, EGR	1	1	1	1				
15	1	129927-13920	GASKET, EGR	1	1	1	1				
16	1	26106-100302	BOLT, M10X 30 PLATED	1	1	1	1				
17	1	26106-100952	BOLT, M10X 95 PLATED	1	1	1	1				
18	1	129930-13201	GASKET, SILENCER	1	1	1	1				1

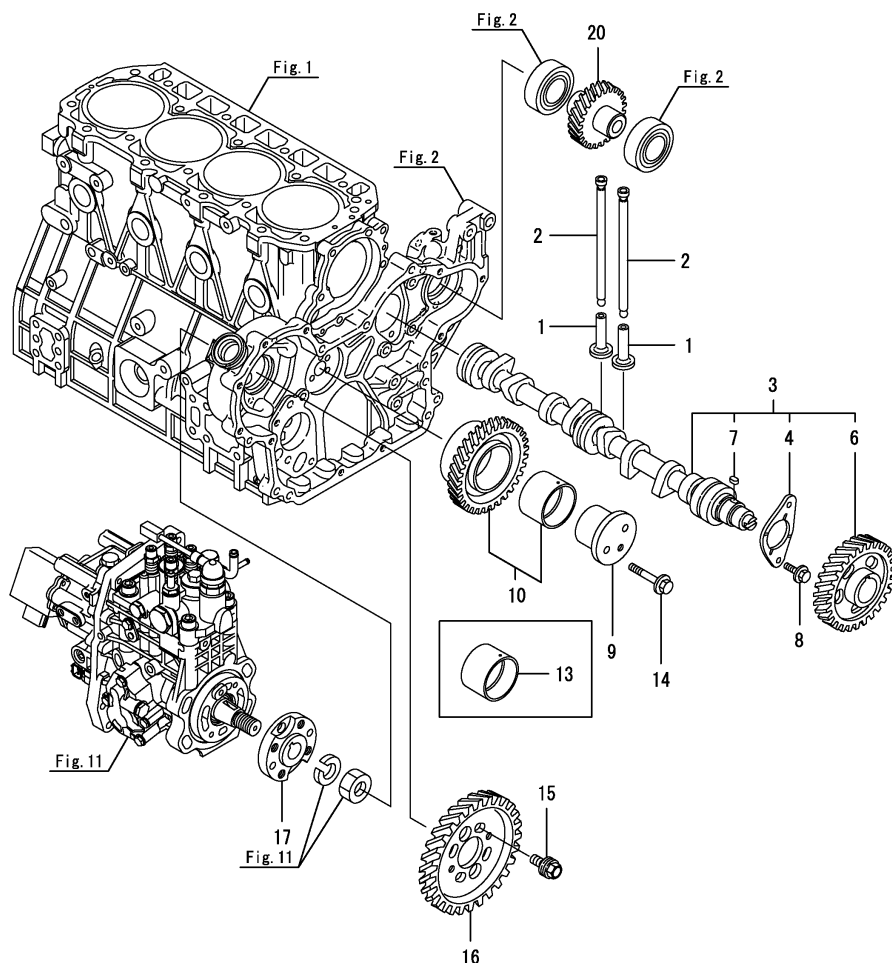


Remarks
(1)Loose parts.

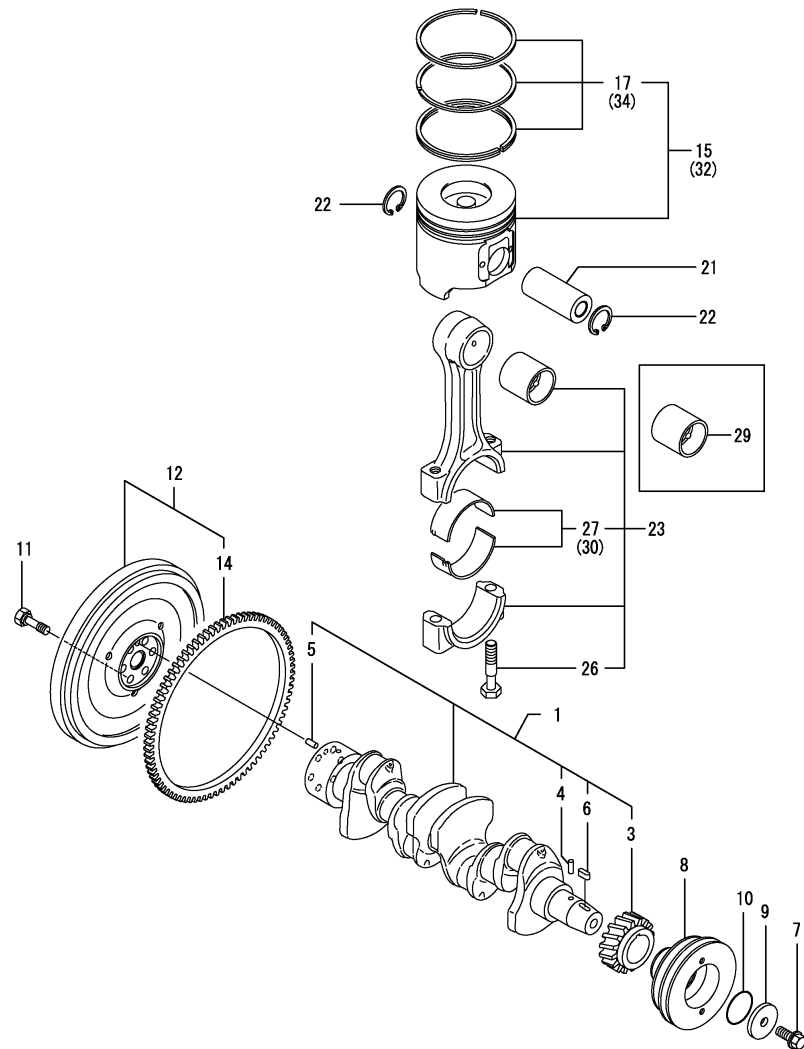
(A)=4TNV98-EPVW
(B)=4TNV98-EXPVW
(C)=4TNV98-EXPVWC

(D)=4TNV98-EXPVWB
(E)=
(F)=

No.	Lev.	Parts No.	Description	Q'ty						I	R
				(A)	(B)	(C)	(D)	(E)	(F)		
1	1	129150-14200	TAPPET	8	8	8	8				
2	1	129907-14400	ROD, PUSH	8	8	8	8				
3	1	129908-14581	CAMSHAFT ASSY	1	1	1	1				
4	2	129150-02450	METAL, THRUST	1	1	1	1				
6	2	129900-14100	GEAR, CAMSHAFT	1	1	1	1				
7	2	22512-070140	KEY, 7X 14	1	1	1	1				
8	1	26106-080142	BOLT, M8X 14 PLATED	2	2	2	2				
9	1	123900-25060	SHAFT, IDLE GEAR	1	1	1	1				
10	1	129900-25100	GEAR ASSY, IDLE	1	1	1	1				
10-1	1	129927-25100	GEAR ASSY, IDLE	1	1	1	1				R
(A=*2018.02.) (B=*2018.02.) (C=E13459) (D=*2018.02.)											
13	1	129150-25920	BUSH, IDLE GEAR	1	1	1	1				1
13-1	1	129927-25920	BUSH, IDLE GEAR	1	1	1	1				R 1
(A=*2018.02.) (B=*2018.02.) (C=E13459) (D=*2018.02.)											
14	1	26106-080552	BOLT, M8X 55 PLATED	3	3	3	3				
15	1	129953-25300	BOLT, PUMP BODY	4	4	4	4				
16	1	129907-25900	GEAR, PUMP	1	1	1	1				
17	1	158563-51150	FLANGE	1	1	1	1				
20	1	129900-26000	GEAR ASSY, PUMP	1	1	1	1				



Remarks
(1)Spare parts.



Remarks

- (1) Spare parts.
- (2) Under-sized (U.S.=0.25) parts.
- (3) Over-sized (O.S.=0.25) parts.
- (4) Interchangeable by simultaneous replacement with No.9-1 & 10-1.

(A)=4TNV98-EPVW
(B)=4TNV98-EXPVW
(C)=4TNV98-EXPVWC

0CW10-M52801 Fig.8

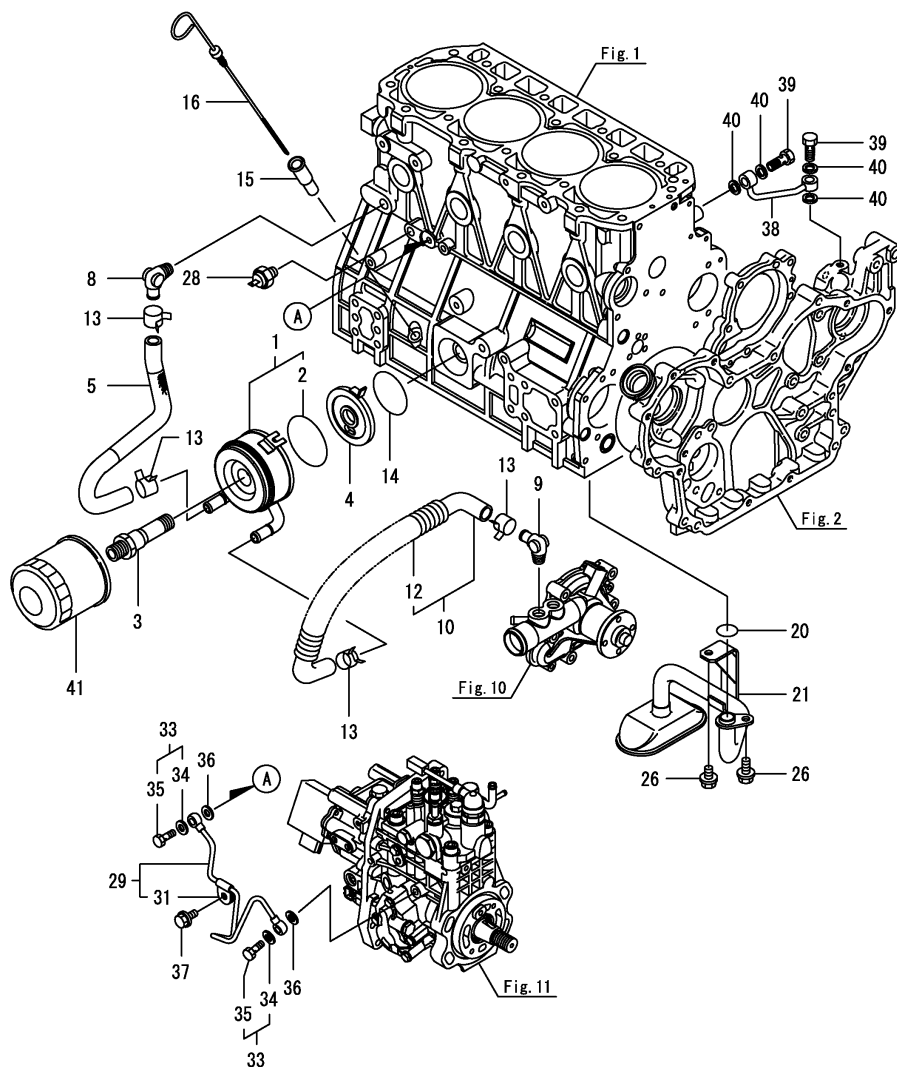
(D)=4TNV98-EXPVWB
(E)=
(F)=

No.	Lev.	Parts No.	Description	Q'ty						I	R
				(A)	(B)	(C)	(D)	(E)	(F)		
1	1	129902-21000	CRANKSHAFT ASSY	1	1	1	1				
3	2	129900-21200	GEAR, CRANKSHAFT	1	1	1	1				
4	2	121850-21290	PIN, CRANK GEAR	1	1	1	1				
5	2	121850-21920	PIN, PARALLEL 10X22	1	1	1	1				
6	2	22512-070140	KEY, 7X 14	1	1	1	1				
7	1	129916-21610	BOLT, V-PULLEY	1	1	1	1				
8	1	129916-21680	V-PULLEY, CRANKSHAFT	1	1	1	1				
9	1	129960-21640	WASHER	1	1						
9-1	1	129960-21940	WASHER, V-PULLEY	1	1	1	1			F	4
(A=*2013.02.) (B=E09434)											
10	1	24341-000530	O-RING, 1AS53.0	1	1						
10-1	1	129960-21930	GASKET, WASHER	1	1	1	1			F	4
(A=*2013.02.) (B=E09434)											
11	1	121850-21130	BOLT, FLYWHEEL	6	6	6	6				
12	1	129907-21510	FLYWHEEL ASSY	1	1	1	1				
14	2	129900-21600	GEAR, RING	1	1	1	1				
15	1	129927-22080	PISTON ASSY	4	4	4	4				
17	2	129927-22050	RING SET, PISTON	4	4	4	4				
21	1	120130-22301	PIN, PISTON	4	4	4	4				
22	1	22252-000300	RING, 30	8	8	8	8				
23	1	129900-23001	ROD ASSY, CONNECTING	4	4	4	4				
26	2	129900-23200	BOLT, CONNECTING ROD	8	8	8	8				
27	2	129900-23601	METAL ASSY, CRANK PIN	4	4	4	4				
27-1	2	129927-23600	BEARING ASSY, PIN	4	4	4	4			R	
(A=*2018.02.) (B=*2018.02.) (C=E13459) (D=*2018.02.)											
29	1	129900-23911	METAL, PISTON PIN	4	4	4	4				1
30	1	129900-23611	METAL ASSY, PIN .25	4	4	4	4				2
30-1	1	129927-23610	BEARING ASSY, PIN US	4	4	4	4			R	2
(A=*2018.02.) (B=*2018.02.) (C=E13459) (D=*2018.02.)											
32	1	729927-22900	PISTON ASSY, 0.25 OS	4	4	4	4				3
34	2	729927-22950	RING SET, PISTON .25	4	4	4	4				3

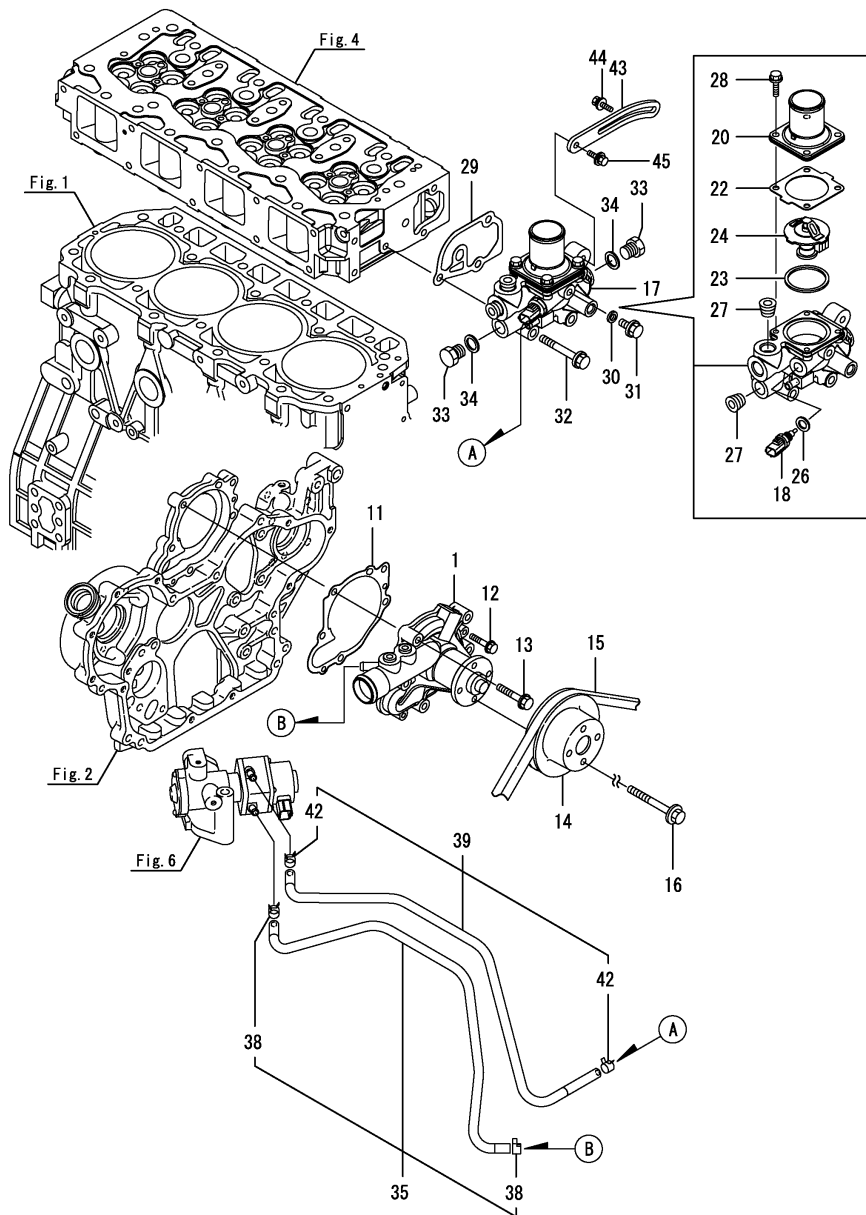
(A)=4TNV98-EPVW
 (B)=4TNV98-EXPVW
 (C)=4TNV98-EXPVWC

 (D)=4TNV98-EXPVWB
 (E)=
 (F)=

No.	Lev.	Parts No.	Description	Q'ty						I	R
				(A)	(B)	(C)	(D)	(E)	(F)		
1	1	129907-33010	COOLER ASSY, OIL	1	1	1	1				
2	2	123912-33050	O-RING	1	1	1	1				
3	1	123912-33100	BOLT, COOLER	1	1	1	1				
4	1	129908-33101	BRACKET, COOLER	1	1	1	1				
5	1	129907-49050	PIPE, BLOCK-COOLER	1	1	1	1				
8	1	129103-49301	ELBOW, PT1/4	1	1	1	1				
9	1	129466-49300	ELBOW, PT3/8	1	1	1	1				
10	1	129907-49630	PIPE ASSY, WATER	1	1	1	1				
12	2	129907-49650	TUBE, CORRUGATED	1	1	1	1				
13	1	23000-025000	CLAMP, 25	4	4	4	4				
14	1	24321-000600	O-RING, 1AG60.0	1	1	1	1				
15	1	121520-34810	GUIDE, DIPSTICK	1	1	1	1				
16	1	129906-34851	DIPSTICK, OIL	1	1	1	1				
20	1	129900-32030	O-RING, P20	1	1	1	1				
21	1	129953-35000	PIPE ASSY, OIL INLET	1	1	1	1				
26	1	26106-080122	BOLT, M8X 12 PLATED	2	2	2	2				
28	1	119761-39450	SWITCH, HYDRAULIC	1	1	1	1				
29	1	129927-39060	PIPE ASSY, OIL	1	1	1	1				
31	2	123907-39500	RETAINER, PIPE	1	1	1	1				
33	1	129005-59830	BOLT ASSY, JOINT M8	2	2	2	2				
34	2	22190-080002	WASHER, SEAL 8	2	2	2	2				
35	2	23857-030000	BOLT, JOINT 3	2	2	2	2				
36	1	22190-080002	WASHER, SEAL 8	2	2	2	2				
37	1	26106-080122	BOLT, M8X 12 PLATED	1	1	1	1				
38	1	129930-39050	PIPE, HO PUMP	1	1	1	1				
39	1	105010-39140	BOLT, PIPE JOINT M8	2	2	2	2				
40	1	22190-080002	WASHER, SEAL 8	4	4	4	4				
41	1	129923-35160	FILTER, LO	1	1	1	1				1


 Remarks
 (1)Spare parts.

(A)=4TNV98-EPVW
 (B)=4TNV98-EXPVW
 (C)=4TNV98-EXPVWC

 (D)=4TNV98-EXPVWB
 (E)=
 (F)=


No.	Lev.	Parts No.	Description	Q'ty						I	R
				(A)	(B)	(C)	(D)	(E)	(F)		
1	1	129927-42000	PUMP ASSY, WATER	1	1						
1-1	1	129927-42001	PUMP ASSY, WATER	1	1	1	1				R
		(A=*2014.07.)	(B=E11712)								
1-2	1	129927-42002	PUMP ASSY, CW	1	1	1	1				N
		(A=*2019.01.)	(B=*2019.01.)								
			(C=E13617)								
			(D=*2019.01.)								
11	1	129900-42020	GASKET, WATER PUMP	1	1	1	1				
12	1	26106-060302	BOLT, M6X 30 PLATED	2	2	2	2				
13	1	26106-080552	BOLT, M8X 55 PLATED	5	5	5	5				
14	1	129900-42461	V-PULLEY, PUMP	1	1						
14-1	1	129900-42461	V-PULLEY, PUMP	1	1	1	1				R
		(A=*2011.11.)	(B=E06508)								
15	1	25152-004300	V-BELT, A43	1	1						1
15-1	1	129948-42250	V-BELT, A43	1	1	1	1				N 1
		(A=*2011.07.)	(B=E05802)								
16	1	26106-080142	BOLT, M8X 14 PLATED	4	4	4	4				
17	1	129939-49801	CASE ASSY,THERMOSTAT	1	1	1	1				
18	2	129927-44900	SENSOR, TEMPERATURE	1	1	1	1				
20	2	129916-49530	COVER, THERMOSTAT	1	1	1	1				
22	2	121850-49540	GASKET, THERMOSTAT	1	1	1	1				
23	2	121850-49550	GASKET, THERMOSTAT	1	1	1	1				
24	2	121850-49800	THERMOSTAT, 82C	1							
24-1	2	121850-49801	THERMOSTAT, 82C	1	1	1	1				N
		(A=*2010.08.)									
26	2	22190-120002	WASHER, SEAL 12	1	1	1	1				
27	2	23875-030000	PLUG, R03	2	2	2	2				
28	2	26106-060202	BOLT, M6X 20 PLATED	4	4	4	4				
29	1	129900-49870	GASKET, THERMOSTAT	1	1	1	1				
30	1	23414-080000	GASKET, 8X1.0	1	1	1	1				
31	1	26106-080122	BOLT, M8X 12 PLATED	1	1	1	1				
32	1	26106-080602	BOLT, M8X 60 PLATED	3	3	3	3				
33	1	121450-42450	PLUG, M16	2	2	2	2				
34	1	124465-44950	GASKET, 16	2	2	2	2				
35	1	129927-49610	HOSE ASSY, WATER A	1	1	1	1				
38	2	23080-012000	CLAMP, 12	2	2	2	2				
39	1	129939-49630	PIPE ASSY, EGR-V B	1	1	1	1				
42	2	23080-012000	CLAMP, 12	2	2	2	2				
43	1	129916-77300	ADJUSTER, BELT	1	1	1	1				
44	1	119810-77340	BOLT, ADJUSTER L=30	1	1	1	1				
45	1	26014-080252	BOLT, M8X 25	1	1	1	1				

Remarks

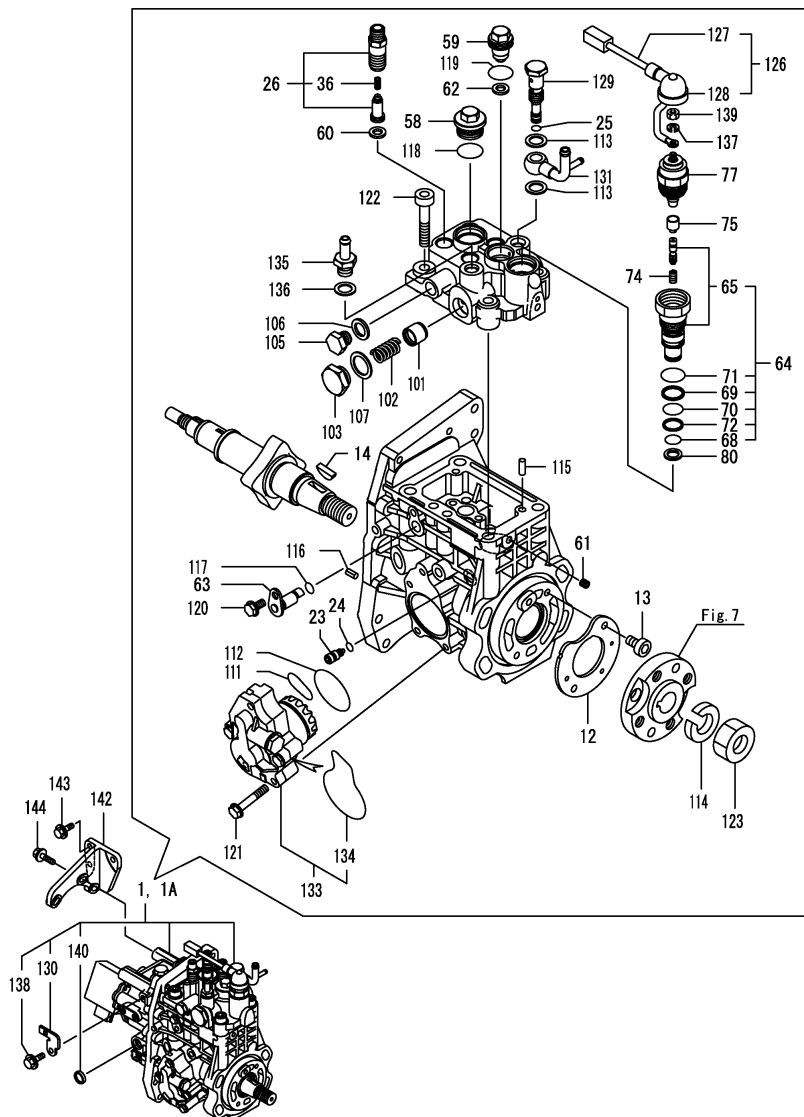
(1) Loose parts.

N:Old Yes New, Q:Old No New, R:Old Yes New, S:Old No New, W:Add, Z:Discontinued, F:Interchangeable by set, K:Q'ty Change

Copyright (C) 2019 YANMAR GLOBAL CS CO., LTD. All Rights Reserved.

(A)=4TNV98-EPVW
(B)=4TNV98-EXPVW
(C)=4TNV98-EXPVWC

(D)=4TNV98-EXPVWB
(E)=
(F)=



Remarks

(1)Governor(Fig.12) is incorporated in this Fuel Injection Pump(No.1,1A).

(1)Eco pump

Make sure to update the engines ECU information when replacing the Eco pump.

Failing to do so will result in engine malfunction.

No.	Lev.	Parts No.	Description	Q'ty						I	R
				(A)	(B)	(C)	(D)	(E)	(F)		
1	1	729921-51320	PUMP ASSY, INJECTION	1							1
1-1	1	729921-51321	PUMP ASSY, INJECTION	1						N	1
(A="2010.08.)											
1A	1	729921-51370	INJECTON PUMP ASSY		1	1	1				1
12	2	129928-51900	COVER, OIL	1	1	1	1				
13	2	129008-51920	BOLT, M6X10	2	2	2	2				
14	2	144626-51090	KEY, FEATHER 5X19	1	1	1	1				
23	2	158600-51270	STOPPER, TAPPET	1	1	1	1				
24	2	158563-51281	O-RING, 4D S6	1	1	1	1				
25	2	158563-51281	O-RING, 4D S6	1	1	1	1				
26	2	129927-51390	VALVE ASSY, DELIVERY	4	4	4	4				
36	3	158563-51330	SPRING, DELIVERY	4	4	4	4				
58	2	158601-51550	PLUG, M22	1	1	1	1				
59	2	129907-51560	PLUG, M16	1	1	1	1				
60	2	158552-51571	GASKET, BARREL PLUG	4	4	4	4				
61	2	158557-51570	PLUG, RACK	1	1	1	1				
62	2	129906-51580	GASKET, BARREL PLUG	1	1	1	1				
63	2	158552-51580	LIFTER, LINK	1	1	1	1				
64	2	129657-51590	TIMER ASSY	1	1	1	1				
65	3	129657-51600	TIMER ASSY	1	1	1	1				
68	3	158553-51670	O-RING, PUMP TIMER	1	1	1	1				
69	3	119802-51680	RING, BACKUP	1	1	1	1				
70	3	119802-51690	O-RING, 1016	1	1	1	1				
71	3	24356-190200	O-RING, 4D19020	1	1	1	1				
72	3	24372-000150	RING, BACK UP T2P15	1	1	1	1				
74	2	119852-51630	SPRING, TIMER	1	1	1	1				
75	2	119852-51640	CAP, TIMER	1	1	1	1				
77	2	119852-51650	VALVE ASSY, SOLENOID	1	1	1	1				
80	2	158553-51680	GASKET, TIMER	1	1	1	1				
101	2	158601-51770	PISTON, ACCUMULATOR	1	1	1	1				
102	2	158552-51781	SPRING, ACCUMULATOR	1	1	1	1				
103	2	158601-51790	PLUG, ACCUMULATOR	1	1	1	1				
105	2	158553-51930	PLUG, M12	1	1	1	1				
106	2	22190-120002	WASHER, SEAL 12	1	1	1	1				
107	2	22190-180002	WASHER, SEAL 18	1	1	1	1				
111	2	158552-52311	O-RING, FEED PUMP	1	1	1	1				
112	2	158552-52400	O-RING, 4E S42	1	1	1	1				
113	2	22190-120002	WASHER, SEAL 12	2	2	2	2				
114	2	22217-180000	WASHER, SPRING 18	1	1	1	1				
115	2	22312-050140	PIN, PARALLEL 5X14	2	2	2	2				
116	2	22351-050010	PIN, SPRING 5.0X10	2	2	2	2				
117	2	24311-000070	O-RING, 1AP7.0	1	1	1	1				
118	2	24356-190200	O-RING, 4D19020	1	1	1	1				
119	2	24356-240210	O-RING, 4D24021	1	1	1	1				
120	2	26106-060102	BOLT, M6X 10 PLATED	1	1	1	1				
121	2	26106-060352	BOLT, M6X 35 PLATED	4	4	4	4				
122	2	26450-100452	BOLT, M10X 45	4	4	4	4				
123	2	26776-180002	NUT, LOCK M18	1	1	1	1				
126	2	129927-51650	HARNESS ASSY, WIRE	1	1	1	1				
127	3	129927-51660	HARNESS	1	1	1	1				
128	3	129263-77941	CAP, RUBBER	1	1	1	1				

N:Old New, Q:Old New, R:Old New, S:Old New, W:Add, Z:Discontinued, F:Interchangeable by set, K:Q'ty Change

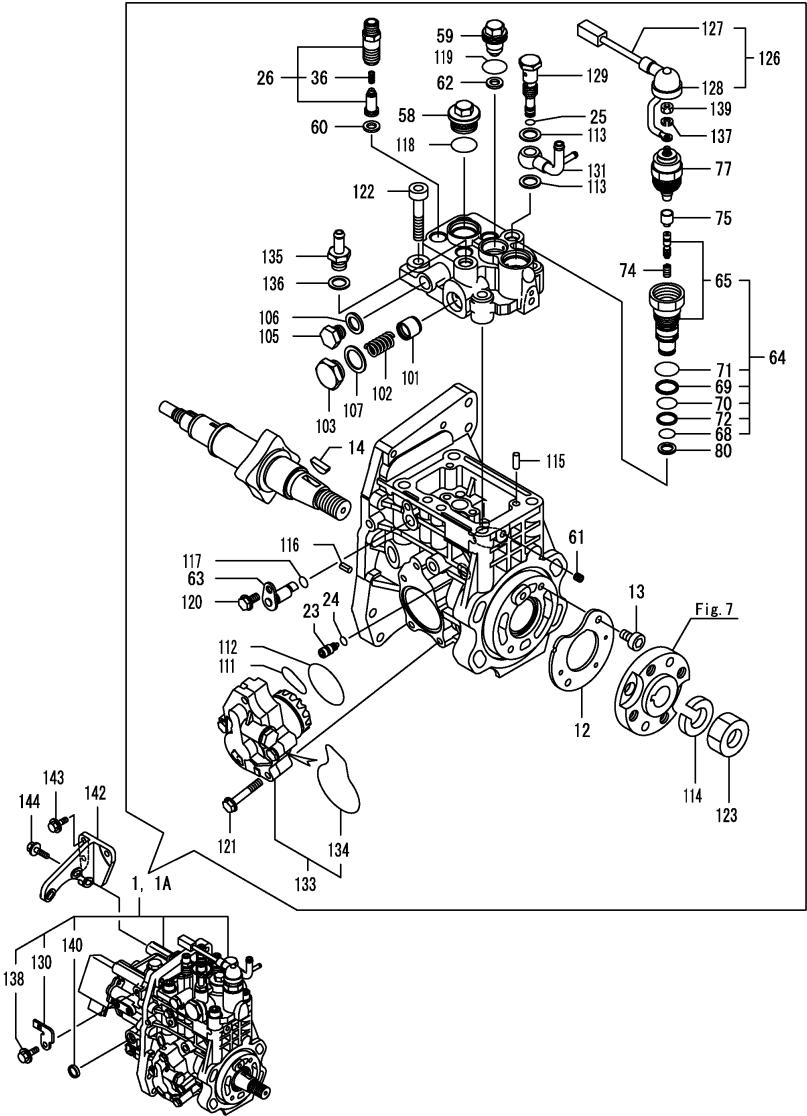
++ CONTINUE ++

Copyright (C) 2019 YANMAR GLOBAL CS CO., LTD. All RightsReserved.

(A)=4TNV98-EPVW
(B)=4TNV98-EXPVW
(C)=4TNV98-EXPVWC

(D)=4TNV98-EXPVWB
(E)=
(F)=

No.	Lev.	Parts No.	Description	Q'ty						I	R
				(A)	(B)	(C)	(D)	(E)	(F)		
129	2	158601-51650	JOINT, OVERFLOW	1	1	1	1				
130	2	129927-51670	BRACKET	1	1	1	1				
131	2	158552-51670	JOINT, OVERFLOW	1	1	1	1				
133	2	158552-52100	PUMP ASSY, FUEL FEED	1	1	1	1				
134	3	158552-52500	O-RING, PUMP INNER	1	1	1	1				
135	2	119934-59910	JOINT, PIPE	1	1	1	1				
136	2	22190-120002	WASHER, SEAL 12	1	1	1	1				
137	2	22217-050000	WASHER, SPRING 5	1	1	1	1				
138	2	26106-060122	BOLT, M6X 12 PLATED	1	1	1	1				
139	2	26716-050002	NUT, M5	1	1	1	1				
140	2	27241-160000	PLUG, 16	1	1	1	1				
142	1	129927-51250	RETAINER, FUEL PUMP	1	1	1	1				
143	1	26106-080202	BOLT, M8X 20 PLATED	3	3	3	3				
144	1	26106-080302	BOLT, M8X 30 PLATED	3	3	3	3				

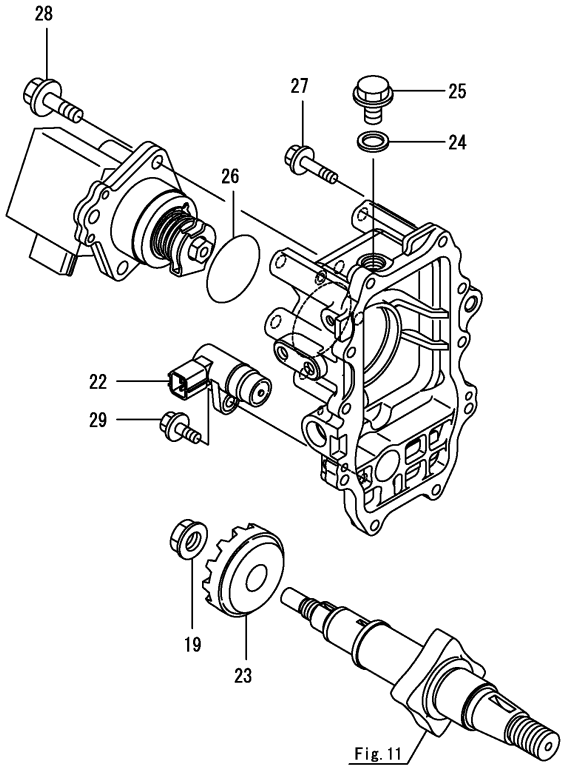


Remarks
(1)Governor(Fig.12) is incorporated in this Fuel Injection Pump(No.1,1A).
(1)Eco pump
Make sure to update the engines ECU information when replacing the Eco pump.
Failing to do so will result in engine malfunction.

(A)=4TNV98-EPVW
(B)=4TNV98-EXPVW
(C)=4TNV98-EXPVWC

(D)=4TNV98-EXPVWB
(E)=
(F)=

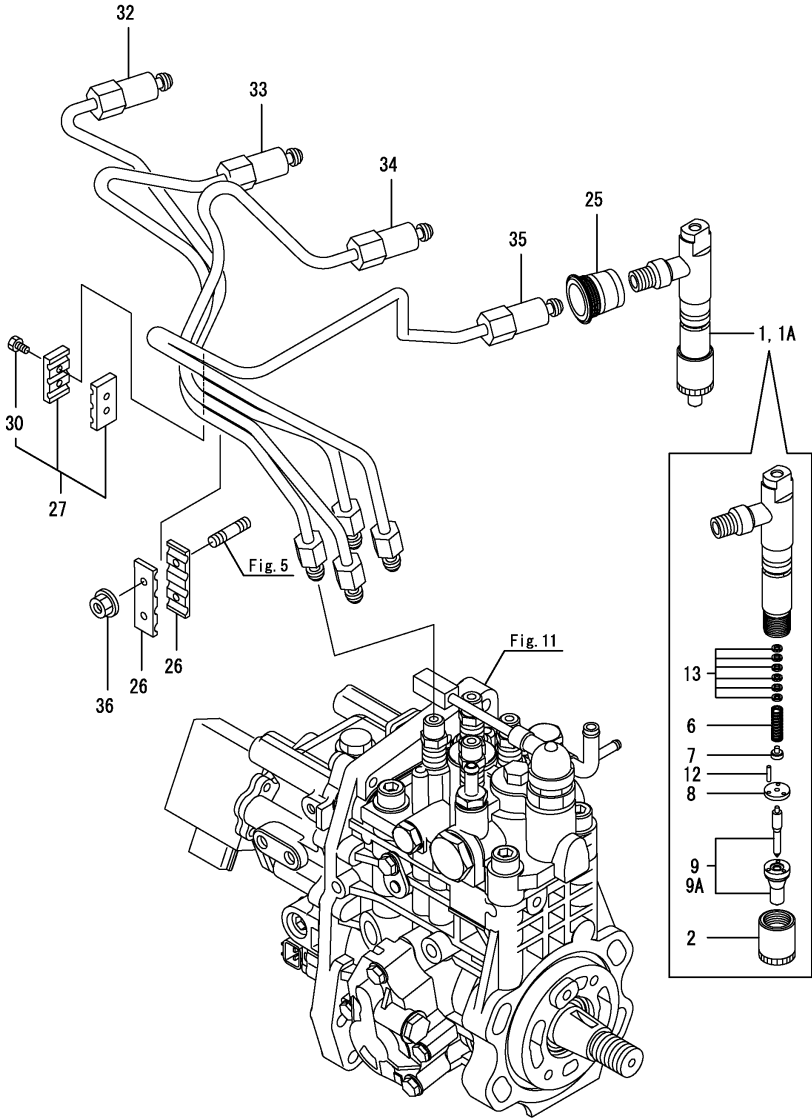
No.	Lev.	Parts No.	Description	Q'ty						I	R
				(A)	(B)	(C)	(D)	(E)	(F)		
19	2	129008-61301	NUT, SUPPORT	1	1	1	1				
22	2	158557-61720	SENSOR, ROTATION	1	1	1	1				
23	2	158553-61780	GEAR, SENSOR	1	1	1	1				
24	2	22190-120002	WASHER, SEAL 12	1	1	1	1				
25	2	158553-51930	PLUG, M12	1	1	1	1				
26	2	24341-000480	O-RING, 1AS48.0	1	1	1	1				
27	2	26106-060252	BOLT, M6X 25 PLATED	10	10	10	10				
28	2	26106-080252	BOLT, M8X 25 PLATED	3	3	3	3				
29	2	26106-060162	BOLT, M6X 16 PLATED	1	1	1	1				



Remarks
* This figure(Governor) is incorporated in the Fuel Injection Pump(Fig.11).

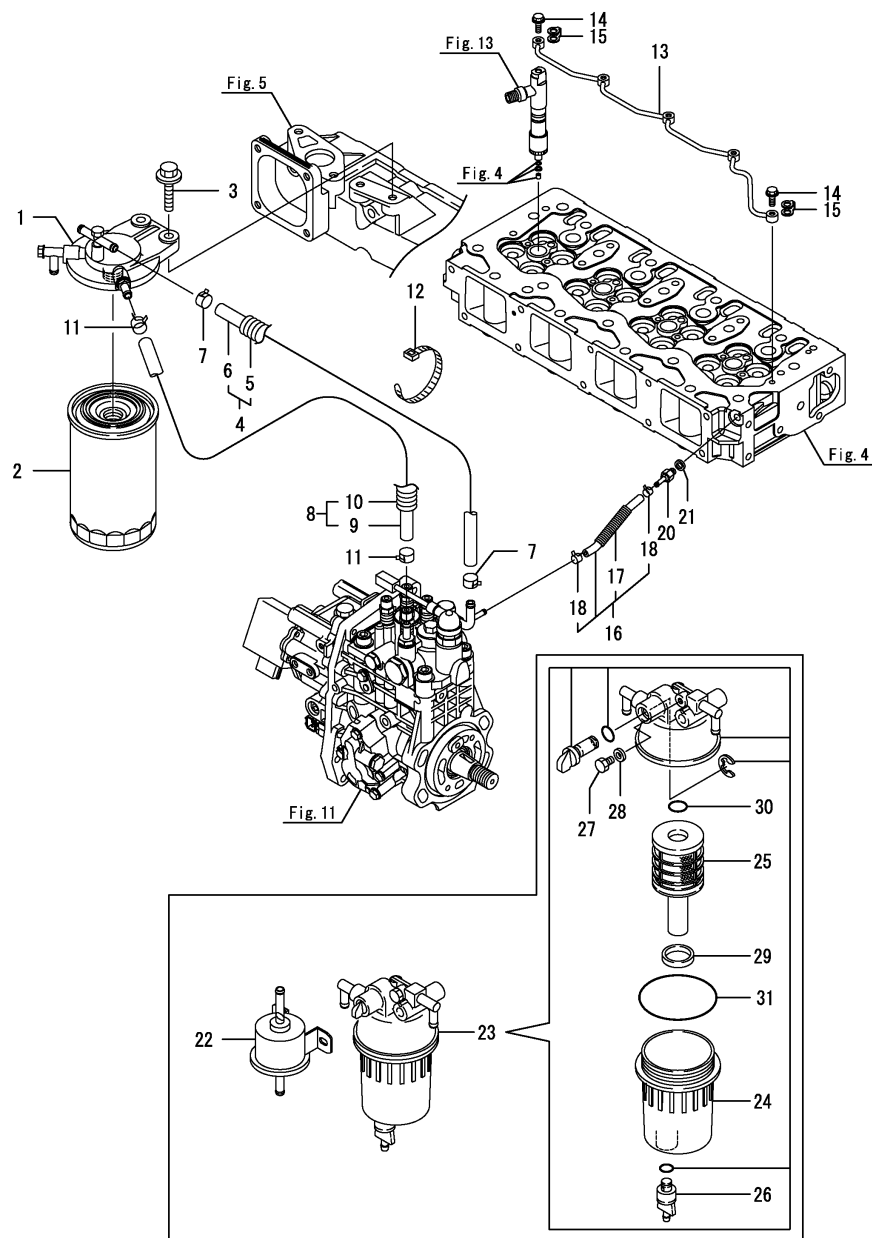
(A)=4TNV98-EPVW
(B)=4TNV98-EXPVW
(C)=4TNV98-EXPVWC

(D)=4TNV98-EXPVWB
(E)=
(F)=



No.	Lev.	Parts No.	Description	Q'ty						I	R
				(A)	(B)	(C)	(D)	(E)	(F)		
1	1	729927-53200	VALVE ASSY,INJECTION	4							
1A	1	729927-53400	VALVE ASSY,INJECTION		4	4	4				
2	2	114250-53080	NUT, NOZZLE	4	4	4	4				
6	2	114250-53120	SPRING, NOZZLE	4	4	4	4				
7	2	114250-53130	SEAT, SPRING	4	4	4	4				
8	2	114250-53140	SPACER, VALVE STOP	4	4	4	4				
9	2	129927-53200	VALVE ASSY,INJECTION	4							
9A	2	129671-53010	VALVE ASSY,INJECTION		4	4	4				
12	2	114250-53210	PIN, POSITIONING	8	8	8	8				
13	2	119803-53400	SHIM SET	4	4	4	4				1
25	1	123907-11601	SEAL, PIPE	4	4	4	4				
26	1	123472-59120	RETAINER, PIPE	2	2	2	2				
27	1	129150-59120	RETAINER, PIPE	1	1	1	1				
30	2	129150-59131	BOLT, M4X14	2	2	2	2				
32	1	129927-59810	PIPE ASSY, INJECTION	1	1	1	1				
33	1	129927-59820	PIPE ASSY, INJECTION	1	1	1	1				
34	1	129927-59830	PIPE ASSY, INJECTION	1	1	1	1				
35	1	129927-59840	PIPE ASSY, INJECTION	1	1	1	1				
36	1	26366-060002	NUT, M6	2	2	2	2				

Remarks
(1)Spare parts.

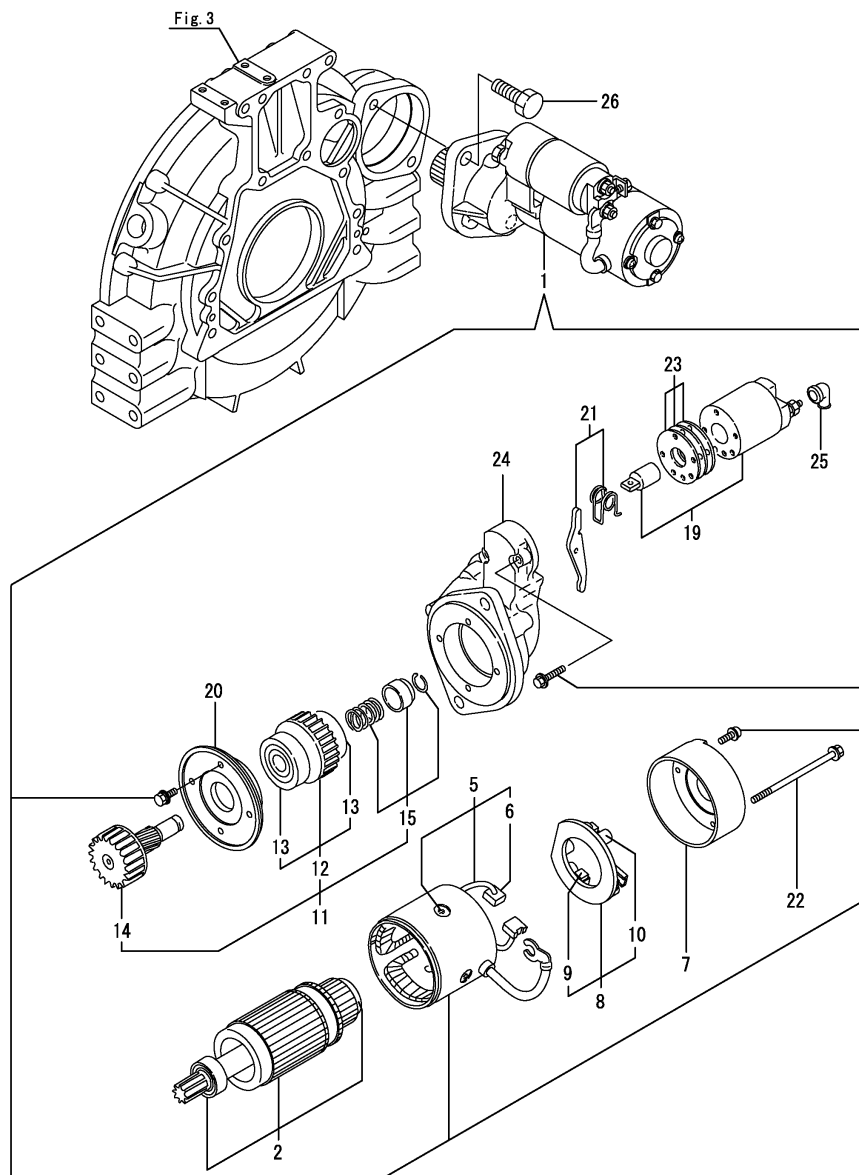


No.	Lev.	Parts No.	Description	(A)=4TNV98-EPVW (B)=4TNV98-EXPVW (C)=4TNV98-EXPVWC			(D)=4TNV98-EXPVWB (E)= (F)=			I	R
				(A)	(B)	(C)	(D)	(E)	(F)		
1	1	129004-55612	BRACKET, FILTER	1	1	1	1				
2	1	129936-55800	FILTER, FUEL	1	1	1	1				
3	1	26106-080302	BOLT, M8X 30 PLATED	2	2	2	2				
4	1	129957-59050	PIPE ASSY, FUEL	1	1	1	1				
5	2	129957-59120	TUBE, CORRUGATED 15	1	1	1	1				
6	2	105025-59750	HOSE, FUEL	1	1	1	1				
7	1	129612-59050	CLIP, HOSE 12	2	2	2	2				
8	1	129916-59010	PIPE ASSY, FUEL	1	1	1	1				
9	2	129136-59110	HOSE, D13/7.5X270	1	1	1	1				
10	2	129961-59110	TUBE, CORRUGATED 15	1	1	1	1				
11	1	129612-59050	CLIP, HOSE 12	2	2	2	2				
12	1	121750-59890	BAND, NYLON	1	1	1	1				
13	1	129907-59140	PIPE ASSY, RETURN	1	1	1	1				
14	1	123907-59540	BOLT, PIPE JOINT M6	5	5	5	5				
15	1	123907-59550	GASKET, FUEL RETURN	5	5	5	5				
16	1	129927-59550	HOSE ASSY, RETURN	1	1	1	1				
17	2	129263-49750	TUBE, CORRUGATED	1	1	1	1				
18	2	124722-59050	CLAMP, HOSE 9	2	2	2	2				
20	1	123907-59560	JOINT, HOSE	1	1	1	1				
21	1	22190-080002	WASHER, SEAL 8	1	1	1	1				
22	1	129612-52100	PUMP, FUEL FEED	1	1	1	1				
23	1	129242-55710	SEPARATOR ASSY,WATER	1							1
23-1	1	129242-55711	SEPARATOR ASSY,WATER	1	1	1	1				1
		(A=E03563)									N 1
24	2	129242-55720	CUP, SEPARATOR	1	1	1	1				
25	2	129242-55730	ELEMENT, FUEL FILTER	1	1	1	1				
26	2	129242-55740	PLUG, DRAIN	1	1	1	1				
27	2	129242-55750	VALVE, AIR VENT	1	1	1	1				
28	2	129242-55760	GASKET, PLUG	1	1	1	1				
29	2	129242-55770	FLOAT	1	1	1	1				
30	2	24311-000160	O-RING, 1AP16.0	1	1	1	1				
31	2	24321-000750	O-RING, 1AG75.0	1	1	1	1				

Remarks

(1) Loose parts.

(A)=4TNV98-EPVW
 (B)=4TNV98-EXPVW
 (C)=4TNV98-EXPVWC

 (D)=4TNV98-EXPVWB
 (E)=
 (F)=


No.	Lev.	Parts No.	Description	Q'ty						I	R
				(A)	(B)	(C)	(D)	(E)	(F)		
1	1	123900-77010	STARTER, 12V-3KW	1	1						
2	2	123900-77400	ARMATURE ASSY	1	1						
5	2	123900-77440	COIL ASSY, FIELD	1	1						
6	3	123900-77450	BRUSH, +	2	2						
7	2	123900-77460	COVER, REAR	1	1						
8	2	123900-77480	HOLDER ASSY, BRUSH	1	1						
9	3	123900-77450	BRUSH, +	2	2						
10	3	121254-77590	SPRING, BRUSH	4	4						
11	2	123900-77510	CLUTCH ASSY, PINION	1	1						
12	3	123900-77520	CLUTCH ASSY	1	1						
13	4	X2240610100	BEARING, BALL	2	2						
14	3	123900-77540	SHAFT, PINION	1	1						
15	3	119131-77550	STOPPER SET, PINION	1	1						
19	2	129900-77591	SWITCH ASSY, MAGNET	1	1						
20	2	123900-77610	RETAINER, BEARING	1	1						
21	2	129900-77620	LEVER SET, SHIFT	1	1						
22	2	123900-77640	BOLT, THROUGH	2	2						
23	2	123900-77650	COVER KIT, DUST	1	1						
24	2	123900-77710	CASE, GEAR	1	1						
25	2	171008-77750	COVER, TERMINAL	1	1						
26	1	26116-120252	BOLT, M12X 25 PLATED	2	2						

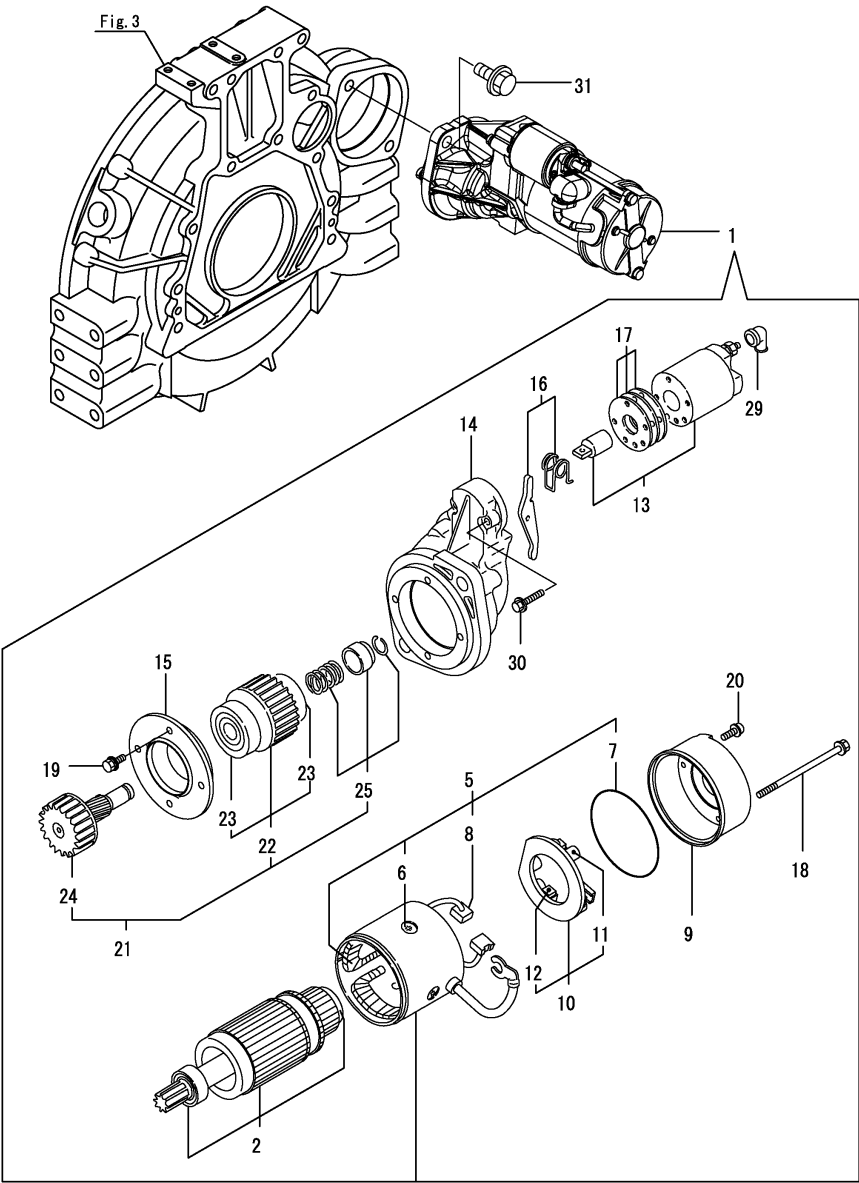
Remarks

* This item is applicable to [(A)=*2011.11.][(B)=E06743] or previous machines(Refer to Fig.19).

 N:Old $\xrightarrow{\text{Yes}}$ New, Q:Old $\xrightarrow{\text{No}}$ New, R:Old $\xrightarrow{\text{Yes}}$ New, S:Old $\xrightarrow{\text{No}}$ New, W:Add, Z:Discontinued, F:Interchangeable by set, K:Q'ty Change
 Copyright (C) 2019 YANMAR GLOBAL CS CO., LTD. All Rights Reserved.

(A)=4TNV98-EPVW
(B)=4TNV98-EXPVW
(C)=4TNV98-EXPVWC

(D)=4TNV98-EXPVWB
(E)=
(F)=

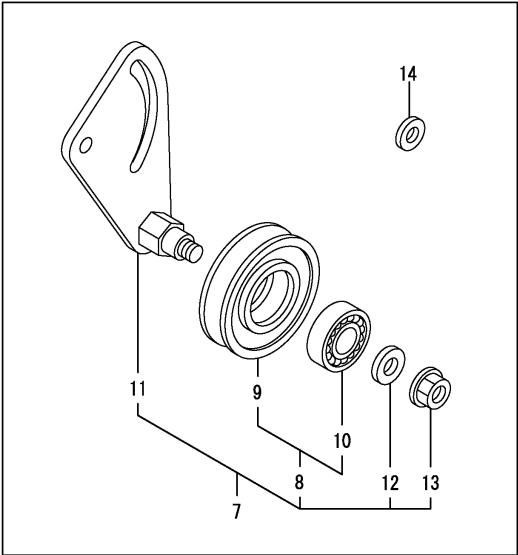
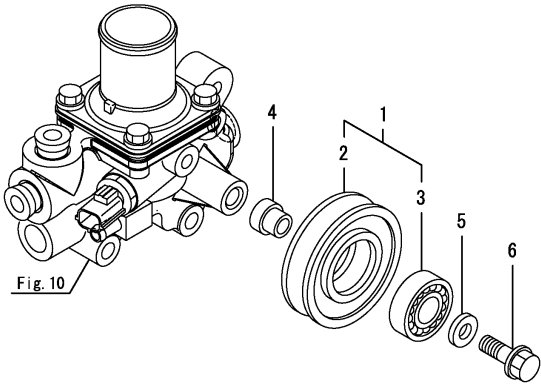


No.	Lev.	Parts No.	Description	Q'ty						I	R
				(A)	(B)	(C)	(D)	(E)	(F)		
1	1	129940-77011	STARTER, 12V.3KW	1	1	1	1				
2	2	129940-77100	ARMATURE ASSY	1	1	1	1				
5	2	129940-77130	COIL ASSY, FIELD	1	1	1	1				
6	3	129940-77140	SCREW, CORE SET	4	4	4	4				
7	3	129940-77150	O-RING	1	1	1	1				
8	3	129940-77160	BRUSH, +	2	2	2	2				
9	2	129940-77171	COVER, REAR	1	1	1	1				
10	2	129940-77181	HOLDER ASSY, BRUSH	1	1	1	1				
11	3	129940-77190	SPRING, BRUSH	1	1	1	1				
12	3	129940-77200	BRUSH, -	2	2	2	2				
13	2	129940-77210	SWITCH ASSY, MAGNET	1	1	1	1				
14	2	129940-77221	CASE, GEAR	1	1	1	1				
15	2	129940-77230	RETAINER, BEARING	1	1	1	1				
16	2	129940-77240	LEVER SET, SHIFT	1	1	1	1				
17	2	129940-77250	COVER KIT, DUST	1	1	1	1				
18	2	129940-77260	BOLT, THROUGH	2	2	2	2				
19	2	129940-77270	BOLT, M6X20	4	4	4	4				
20	2	129940-77280	SCREW, M4	2	2	2	2				
21	2	123900-77510	CLUTCH ASSY, PINION	1	1	1	1				
22	3	123900-77520	CLUTCH ASSY	1	1	1	1				
23	4	X2240610100	BEARING, BALL	2	2	2	2				
24	3	123900-77540	SHAFT, PINION	1	1	1	1				
25	3	119131-77550	STOPPER SET, PINION	1	1	1	1				
29	2	121254-77810	COVER, TERMINAL M	1	1	1	1				
30	2	114371-79070	BOLT, M6	2	2	2	2				
31	1	26106-120252	BOLT, M12X 25 PLATED	2	2	2	2				

Remarks
* This item is applicable to [(A)=*2011.12.][(B)=E06744] or following machines(Refer to Fig.15).

(A)=4TNV98-EPVW
(B)=4TNV98-EXPVW
(C)=4TNV98-EXPVWC

(D)=4TNV98-EXPVWB
(E)=
(F)=

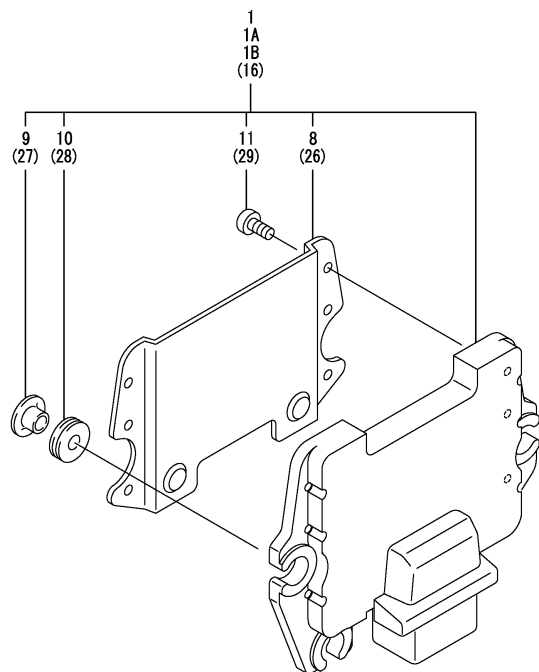


No.	Lev.	Parts No.	Description	Q'ty						I	R
				(A)	(B)	(C)	(D)	(E)	(F)		
1	1	129457-96200	PULLEY ASSY, TENSION	1	1	1	1				
2	2	129457-96230	PULLEY, TENSION	1	1	1	1				
3	2	24104-062024	BEARING, BALL 6202UU	1	1	1	1				
4	1	121851-96240	SPACER, PULLEY	1	1	1	1				
5	1	22137-100000	WASHER, 10	1	1	1	1				
6	1	26106-100402	BOLT, M10X 40 PLATED	1	1	1	1				
7	1	129906-96950	TENSION DEVICE ASSY	1	1	1	1				1
8	2	129457-96200	PULLEY ASSY, TENSION	1	1	1	1				
9	3	129457-96230	PULLEY, TENSION	1	1	1	1				
10	3	24104-062024	BEARING, BALL 6202UU	1	1	1	1				
11	2	129906-96930	ARM, TENSION	1	1	1	1				
12	2	22137-100000	WASHER, 10	1	1	1	1				
13	2	26306-100002	NUT, M10	1	1	1	1				
14	1	129927-77690	WASHER, ECU	3	3	3	3				1

Remarks
(1)Loose parts.

(A)=4TNV98-EPVW
(B)=4TNV98-EXPVW
(C)=4TNV98-EXPVWC

(D)=4TNV98-EXPVWB
(E)=
(F)=



No.	Lev.	Parts No.	Description	Q'ty						I	R
				(A)	(B)	(C)	(D)	(E)	(F)		
1	1	129921-75100	CONTROLLER ASSY, ECU	1							1
1A	1	129921-75250	ECU CMP(4TNV98-EXPVW		1						1
1B	1	129923-75040	ECU ASSY,4-98-EXPVWC			1	1				1
8	2	129927-77600	SHIELD, ECU	1	1	1	1				
9	2	129927-77680	COLLAR, CONTROLLER	3	3	3	3				
10	2	119578-91351	RUBBER, CONTROLLER	3	3	3	3				
11	2	22877-500080	SCREW, 5X 8	6	6	6	6				
16	1	129927-75910	CONTROLLER ASSY, ECU	1	1	1	1				2
26	2	129927-77600	SHIELD, ECU	1	1	1	1				
27	2	129927-77680	COLLAR, CONTROLLER	3	3	3	3				
28	2	119578-91351	RUBBER, CONTROLLER	3	3	3	3				
29	2	22877-500080	SCREW, 5X 8	6	6	6	6				

Remarks

(1)Eco ECU

This part cannot be ordered.

Replace the part using a Service ECU with the proper engine information installed.

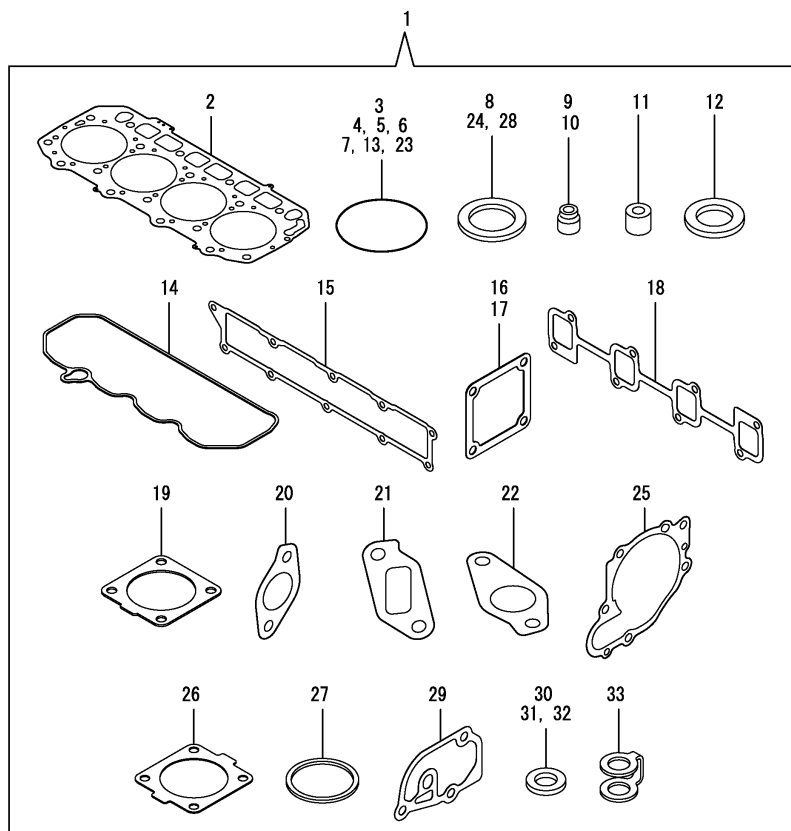
(2)Service ECU

If the proper information is not installed, the engine will not operate.

To install proper information, go to an authorized distributor.

(A)=4TNV98-EPVW
(B)=4TNV98-EXPVW
(C)=4TNV98-EXPVWC

(D)=4TNV98-EXPVWB
(E)=
(F)=



No.	Lev.	Parts No.	Description	Q'ty						I	R
				(A)	(B)	(C)	(D)	(E)	(F)		
1	1	729927-92610	GASKET SET	1	1	1	1				1
2	2	129907-01331	GASKET, HEAD	1	1	1	1				
3	2	129900-32030	O-RING, P20	2	2	2	2				
4	2	129900-32040	O-RING, P14	1	1	1	1				
5	2	24311-000070	O-RING, 1AP7.0	1	1	1	1				
6	2	24351-030750	O-RING, 1A3075	1	1	1	1				
7	2	24311-000320	O-RING, 1AP32.0	3	3	3	3				
8	2	22190-220002	WASHER, SEAL 22	1	1	1	1				
9	2	119803-11340	SEAL, VALVE STEM	8	8	8	8				
10	2	124160-11340	SEAL, VALVE STEM	8	8	8	8				
11	2	119802-11870	PROTECTOR, NOZZLE	4	4	4	4				
12	2	119625-11880	SEAT, NOZZLE	4	4	4	4				
13	2	24311-000120	O-RING, 1AP12.0	8	8	8	8				
14	2	129933-11310	GASKET, BONNET	1	1	1	1				
15	2	129907-12110	GASKET, MANIFOLD	1	1	1	1				
16	2	119129-77020	GASKET, AIR HEATER	1	1	1	1				
17	2	121850-77021	GASKET, AIR HEATER	1	1	1	1				
18	2	129900-13251	GASKET, MANIFOLD	1	1	1	1				
19	2	129930-13201	GASKET, SILENCER	1	1	1	1				
20	2	129927-13810	GASKET, EGR PIPE	1	1	1	1				
21	2	129927-13910	GASKET, EGR	1	1	1	1				
22	2	129927-13920	GASKET, EGR	1	1	1	1				
23	2	24341-000530	O-RING, 1AS53.0	1	1	1	1				
24	2	22190-080002	WASHER, SEAL 8	7	7	7	7				
25	2	129900-42020	GASKET, WATER PUMP	1	1	1	1				
26	2	121850-49540	GASKET, THERMOSTAT	1	1	1	1				
27	2	121850-49550	GASKET, THERMOSTAT	1	1	1	1				
28	2	22190-120002	WASHER, SEAL 12	1	1	1	1				
29	2	129900-49870	GASKET, THERMOSTAT	1	1	1	1				
30	2	23414-080000	GASKET, 8X1.0	1	1	1	1				
31	2	124465-44950	GASKET, 16	2	2	2	2				
32	2	129150-49360	GASKET, 10	1	1	1	1				
33	2	123907-59550	GASKET, FUEL RETURN	5	5	5	5				

Remarks

(1)Optional parts.

Parts No. Index

Parts No.	Fig. No.	Ref. No.
105010-39140	9	39
105025-59750	14	6
114250-53080	13	2
114250-53120	13	6
114250-53130	13	7
114250-53140	13	8
114250-53210	13	12
114371-79070	19	30
119005-77051	5	9
119129-77020	5	7
	18	16
119129-77520	5	10
119131-18320	6	3 A
119131-77550	15	15
	19	25
119578-91351	17	10
		28
119593-11301	4	31
119620-01750	3	3
119620-11180	4	15
119625-11880	4	27
	18	12
119640-01640	3	8
119640-61400	4	62
119761-39450	9	28
119802-11870	4	26
	18	11
119802-13680	6	6
119802-51680	11	69
119802-51690	11	70
119803-11340	4	16
	18	9
119803-53400	13	13
119810-77340	10	44
119852-51630	11	74
119852-51640	11	75
119852-51650	11	77
119934-59910	11	135
120130-22301	8	21
121023-26071	2	40
121254-77590	15	10
121254-77810	19	29
121450-42450	10	33
121520-34810	9	15
121750-59890	14	12
121850-21130	8	11
121850-21290	8	4
121850-21920	8	5
121850-49540	10	22
	18	26

Parts No.	Fig. No.	Ref. No.
121850-49550	10	23
	18	27
121850-49800	10	24
121850-49801	10	24 -1
121850-77021	5	8
	18	17
121851-96240	16	4
123472-59120	13	26
123900-25060	7	9
123900-77010	15	1
123900-77400	15	2
123900-77440	15	5
123900-77450	15	6
		9
123900-77460	15	7
123900-77480	15	8
123900-77510	15	11
	19	21
123900-77520	15	12
	19	22
123900-77540	15	14
	19	24
123900-77610	15	20
123900-77640	15	22
123900-77650	15	23
123900-77710	15	24
123907-03100	4	56
123907-03110	4	57
123907-03120	4	58
123907-03140	4	59
123907-11280	4	36
123907-11550	4	4
123907-11601	13	25
123907-11820	4	22
123907-11830	4	21
123907-39500	9	31
123907-59540	14	14
123907-59550	14	15
	18	33
123907-59560	14	20
123912-33050	9	2
123912-33100	9	3
124160-01751	2	24
	4	51
124160-11340	4	17
	18	10
124160-11360	4	67
124465-44950	10	34
	18	31
124722-59050	14	18

Parts No.	Fig. No.	Ref. No.
129004-55612	14	1
129005-59830	9	33
129008-51920	11	13
129008-61301	12	19
129100-01580	2	1
	3	1
129103-49301	9	8
129136-59110	14	9
129150-02450	7	4
129150-11230	4	39
		43
129150-11750	4	20
		40
		44
129150-14200	7	1
129150-25920	7	13
129150-49360	18	32
129150-59120	13	27
129150-59131	13	30
129242-55710	14	23
129242-55711	14	23 -1
129242-55720	14	24
129242-55730	14	25
129242-55740	14	26
129242-55750	14	27
129242-55760	14	28
129242-55770	14	29
129263-13210	6	4
129263-49750	14	17
129263-77941	11	128
129418-18320	6	3
129457-96200	16	1
		8
129457-96230	16	2
		9
129466-49300	9	9
129612-52100	14	22
129612-59050	14	7
		11
129657-51590	11	64
129657-51600	11	65
129671-53010	13	9 A
129900-01200	1	27
129900-01250	1	4
129900-01620	3	2
129900-01740	2	26
129900-01850	2	33
129900-01870	2	34
129900-02020	1	6
129900-02341	1	32

Parts No.	Fig. No.	Ref. No.
129900-02410	1	9
129900-02931	1	24
129900-02941	1	35
129900-13251	6	5
	18	18
129900-14100	7	6
129900-14140	2	38
129900-21200	8	3
129900-21600	8	14
129900-23001	8	23
129900-23200	8	26
129900-23601	8	27
129900-23611	8	30
129900-23911	8	29
129900-25100	7	10
129900-26000	7	20
129900-26250	2	39
129900-32001	2	4
129900-32030	2	16
	9	20
	18	3
129900-32040	2	17
	18	4
129900-42020	10	11
	18	25
129900-42461	10	14
		14 -1
129900-49870	10	29
	18	29
129900-77591	15	19
129900-77620	15	21
129902-21000	8	1
129906-01700	3	7
129906-34851	9	16
129906-51580	11	62
129906-96930	16	11
129906-96950	16	7
129907-01331	1	28
	18	2
129907-03011	4	53
129907-03061	4	54
129907-03070	4	55
129907-07900	4	1
129907-11100	4	12
129907-11110	4	13
129907-11120	4	14
129907-11250	4	33
129907-11260	4	34
129907-11270	4	35
129907-11341	4	32

Parts No. Index

Parts No.	Fig. No.	Ref. No.
129907-11510	4	18
129907-11650	4	37
129907-11660	4	41
129907-11800	4	25
129907-11910	4	28
129907-11920	4	45
129907-11950	4	29
129907-11960	4	28 -1
129907-12110	5	1
	18	15
129907-14400	7	2
129907-21510	8	12
129907-25900	7	16
129907-33010	9	1
129907-49050	9	5
129907-49630	9	10
129907-49650	9	12
129907-51560	11	59
129907-59140	14	13
129908-14581	7	3
129908-33101	9	4
129916-01790	3	6
129916-01800	2	32
129916-21610	8	7
129916-21680	8	8
129916-49530	10	20
129916-59010	14	8
129916-77300	10	43
129921-75100	17	1
129921-75250	17	1 A
129922-03120	4	58 -1
129922-11320	4	52 -1
129923-35160	9	41
129923-75040	17	1 B
129927-02340	1	32 -1
129927-02930	1	24 -1
129927-02940	1	35 -1
129927-11320	4	52
129927-11700	4	5
129927-13100	6	2
129927-13101	6	2 -1
129927-13150	6	1
129927-13800	6	9
129927-13810	6	10
	18	20
129927-13910	6	14
	18	21
129927-13920	6	15
	18	22
129927-22050	8	17

Parts No.	Fig. No.	Ref. No.
129927-22080	8	15
129927-23600	8	27 -1
129927-23610	8	30 -1
129927-25100	7	10 -1
129927-25920	7	13 -1
129927-39060	9	29
129927-42000	10	1
129927-42001	10	1 -1
129927-42002	10	1 -2
129927-42140	2	45
129927-44900	10	18
129927-49610	10	35
129927-51250	11	142
129927-51390	11	26
129927-51650	11	126
129927-51660	11	127
129927-51670	11	130
129927-53200	13	9
129927-59550	14	16
129927-59810	13	32
129927-59820	13	33
129927-59830	13	34
129927-59840	13	35
129927-75910	17	16
129927-77600	17	8
		26
129927-77680	17	9
		27
129927-77690	16	14
129928-13900	6	13
129928-51900	11	12
129930-13201	6	18
	18	19
129930-39050	9	38
129933-11310	4	61
	18	14
129936-55800	14	2
129939-07920	4	2
129939-12100	5	3
129939-12150	5	2
129939-49630	10	39
129939-49801	10	17
129940-77011	19	1
129940-77100	19	2
129940-77130	19	5
129940-77140	19	6
129940-77150	19	7
129940-77160	19	8
129940-77171	19	9
129940-77181	19	10

Parts No.	Fig. No.	Ref. No.
129940-77190	19	11
129940-77200	19	12
129940-77210	19	13
129940-77221	19	14
129940-77230	19	15
129940-77240	19	16
129940-77250	19	17
129940-77260	19	18
129940-77270	19	19
129940-77280	19	20
129948-42250	10	15 -1
129951-01740	2	26 -1
129953-25300	7	15
129953-35000	9	21
129957-59050	14	4
129957-59120	14	5
129960-21640	8	9
129960-21930	8	10 -1
129960-21940	8	9 -1
129961-59110	14	10
129962-01500	2	3
129E00-13650	6	6 -1
144626-51090	11	14
158552-51571	11	60
158552-51580	11	63
158552-51670	11	131
158552-51781	11	102
158552-52100	11	133
158552-52311	11	111
158552-52400	11	112
158552-52500	11	134
158553-51670	11	68
158553-51680	11	80
158553-51930	11	105
	12	25
158553-61780	12	23
158557-51570	11	61
158557-61720	12	22
158563-51150	7	17
158563-51281	11	24
		25
158563-51330	11	36
158600-51270	11	23
158601-51550	11	58
158601-51650	11	129
158601-51770	11	101
158601-51790	11	103
171008-77750	15	25
171031-11741	2	43
171051-01921	1	5

Parts No.	Fig. No.	Ref. No.
175339-79700	4	63
22137-100000	16	5
		12
22190-080002	9	34
		36
		40
	14	21
	18	24
22190-120002	10	26
	11	106
		113
		136
	12	24
	18	28
22190-180002	11	107
22190-220002	18	8
22217-050000	11	137
22217-180000	11	114
22252-000300	8	22
22312-050140	11	115
22351-050010	11	116
22351-060012	1	10
22512-070140	7	7
	8	6
22857-500100	4	64
		65
22877-500080	17	11
		29
23000-025000	9	13
23080-012000	10	38
		42
23414-080000	10	30
	18	30
23857-030000	9	35
23875-030000	10	27
23876-020000	4	9
23876-030000	1	11
		12
		13
	4	10
24104-062024	16	3
		10
24311-000070	2	18
	11	117
	18	5
24311-000120	4	30
		68
	18	13
24311-000160	14	30
24311-000320	2	25

Parts No. Index

Parts No.	Fig. No.	Ref. No.
24311-000320	2	44
	4	69
	18	7
24321-000600	9	14
24321-000750	14	31
24321-000850	2	41
24341-000480	12	26
24341-000530	8	10
	18	23
24351-030750	2	19
	18	6
24356-190200	11	71
		118
24356-240210	11	119
24372-000150	11	72
25152-004300	10	15
26014-080252	10	45
26106-060102	11	120
26106-060122	4	66
	11	138
26106-060162	12	29
26106-060202	10	28
26106-060252	12	27
26106-060302	10	12
26106-060352	11	121
26106-080122	3	11
	9	26
		37
	10	31
26106-080142	7	8
	10	16
26106-080162	2	20
		27
		36
	4	3
26106-080202	2	21
		27 -1
	11	143
26106-080252	12	28
26106-080302	11	144
	14	3
26106-080402	2	28
		37
	4	47
	5	11
26106-080452	2	22
		28 -1
	5	5
26106-080552	7	14
	10	13

Parts No.	Fig. No.	Ref. No.
26106-080602	4	48
		49
	10	32
26106-080702	2	35
26106-080752	2	29
26106-080802	5	6
26106-080902	5	12
26106-100202	2	42
26106-100302	6	11
		16
26106-100402	16	6
26106-100952	6	17
26106-120252	19	31
26116-120252	15	26
26206-100352	3	4
26206-100702	3	5
26216-060202	5	4
26216-100302	2	15
26226-080222	4	46
26306-080002	4	50
	6	8
		12
26306-100002	2	23
	16	13
26366-060002	13	36
26450-100452	11	122
26716-050002	11	139
26776-180002	11	123
27241-160000	11	140
27241-300000	1	14
27241-400000	4	11
27310-070001	4	23
729900-02801	1	29
729907-01559	2	30
729921-51320	11	1
729921-51321	11	1 -1
729921-51370	11	1 A
729927-01560	1	1
729927-02800	1	29 -1
729927-22900	8	32
729927-22950	8	34
729927-53200	13	1
729927-53400	13	1 A
729927-92610	18	1
X2240610100	15	13
	19	23

Parts No.	Fig. No.	Ref. No.
-----------	----------	----------

Parts No.	Fig. No.	Ref. No.
-----------	----------	----------