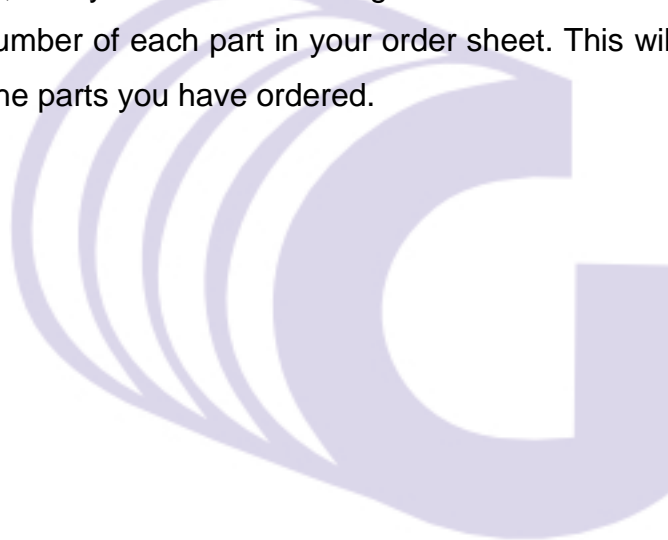


PARTS CATALOG

PREFACE

- 1.This Parts Catalog carries all parts incorporated in YANMAR Model 4TNV84T-XSU engine manufactured since March, 2006.
- 2.Each illustration corresponds to the parts list on the following page.
- 3.When ordering parts,clearly write down the engine model and serial number,as well as the name and number of each part in your order sheet. This will help insure reliable delivery of the parts you have ordered.



Directions for the Parts Catalog.

1. The parts stipulated in this Parts Catalog are not necessarily standard equipped parts.
2. Parts may change without prior notice.
3. The following is an example of the Parts Catalog format.

OCF10-G21601 29. FUEL INJECTION PUMP(W/BOOST)

REF.	LEV.	PARTS NO.	DESCRIPTION	(A)	(B)	(C)	(D)	(E)	(F)	Q'TY	I	R
1	1	729595-51390	FUEL INJECTION PUMP	1	1	1	1	1				
1-1	1	729595-51391	FUEL INJECTION PUMP	1	1	1	1	1			N	1
		(A=E00185) (B=E00200)										
3	2	26022-060162	SCREW M 6X 16	9	9	9	9	9				
3-1	2	26022-060162	SCREW M 6X 16	4	4	4	4	4			K	
		(A=E00156) (B=E00156) (C=E00156) (D=E00156) (E=E00156)										
4	2	129470-51040	CAMSHAFT	1	1	1	1	1				
5	2	122710-51050	BEARING, ROLLER	2	2	2	2	2				
6	2	129470-51060	RETAINER	1	1	1	1	1				

Remarks
(1) BOOST COMPEMSATOR TYPE. OPTIONAL PART, TO E00155,(4JH-DT, 4JH-DTZ)

① Ref. No.

The Ref. No. listed may not be in accordance with the illustration Ref. No.

(Ex.) Illustration No.

List Ref No.

1

1

(Before change)

1-1

(After change)

For interchangeable symbols N, R and K, illustrations for new parts may be abbreviated.

② Lev. (Level)

Level indication

The numbers below indicate the level of relativity towards the main part.

1 ---- Main parts (Assembly parts)

2 ---- Sub component included in " 1 ".

3 ---- Sub component included in " 2 ".

Note) Parts that are not for sale are partially illustrated but not listed.

③ Interchangeability Mark

When a part change takes place, one of the following interchangeability symbols is indicated beside the part.

Symbol	Interchangeability	Contents note
N	Old $\xrightarrow{\text{Yes}}$ New No	New Part is interchangeable for Old Part but Old Part is not interchangeable for New Part.
Q	Old $\xrightarrow{\text{No}}$ New Yes	New Part is not interchangeable for Old Part but Old Part is interchangeable for New Part.
R	Old $\xrightarrow{\text{Yes}}$ New Yes	New/ Old Parts are both interchangeable.
S	Old $\xrightarrow{\text{No}}$ New No	New/ Old Parts are both not interchangeable.
W		Part newly added.
Z		Part discontinued.
F		Not interchangeable by a single part but interchangeable together with related parts.
K		Changes only for used parts quantities.

④ Effective Machine No.

When a part changes, the effective Machine No. will be indicated in the (A)-(F) column.

Product Symbol	Product No.	Product Symbol	Product No.
C	Clutch No. Compressor No.	F	Machine No. (Agricultural Equip.)
D	Drive No.	M	Machine No.
E	Engine No.		

Note 1) A date may follow the symbol. (Ex.) 1996.01

Note 2) " XXXXX " and " ZZZZZ " are for parts that could not be predicted or for engine models that could not be identified.

Note 3) (A=E00185) is the E (Engine Serial Number) for the column (A) model (in this case 4JH-DT) after the parts design change.

⑤ Remarks Mark

Figures or alphabets (symbols) are entered in the remarks column.

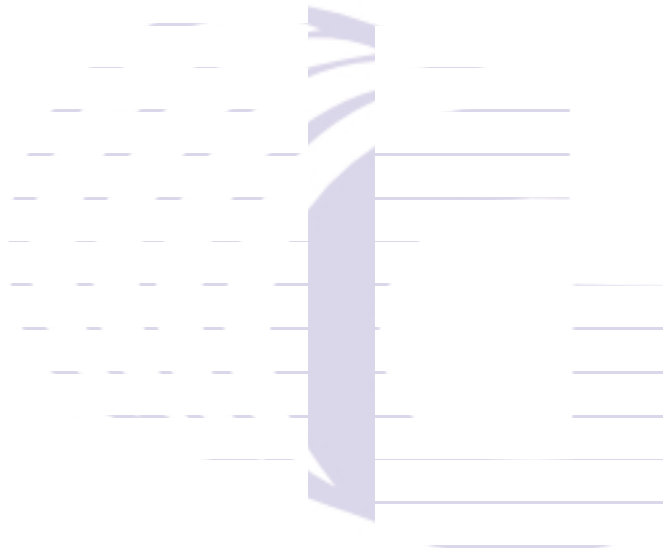
The comments (remarks) on parts that are indicated at the bottom of the illustration are the same symbols as those stated above.

Fig.No. GROUP NAME

ENGINE 4TNV84T-XSU

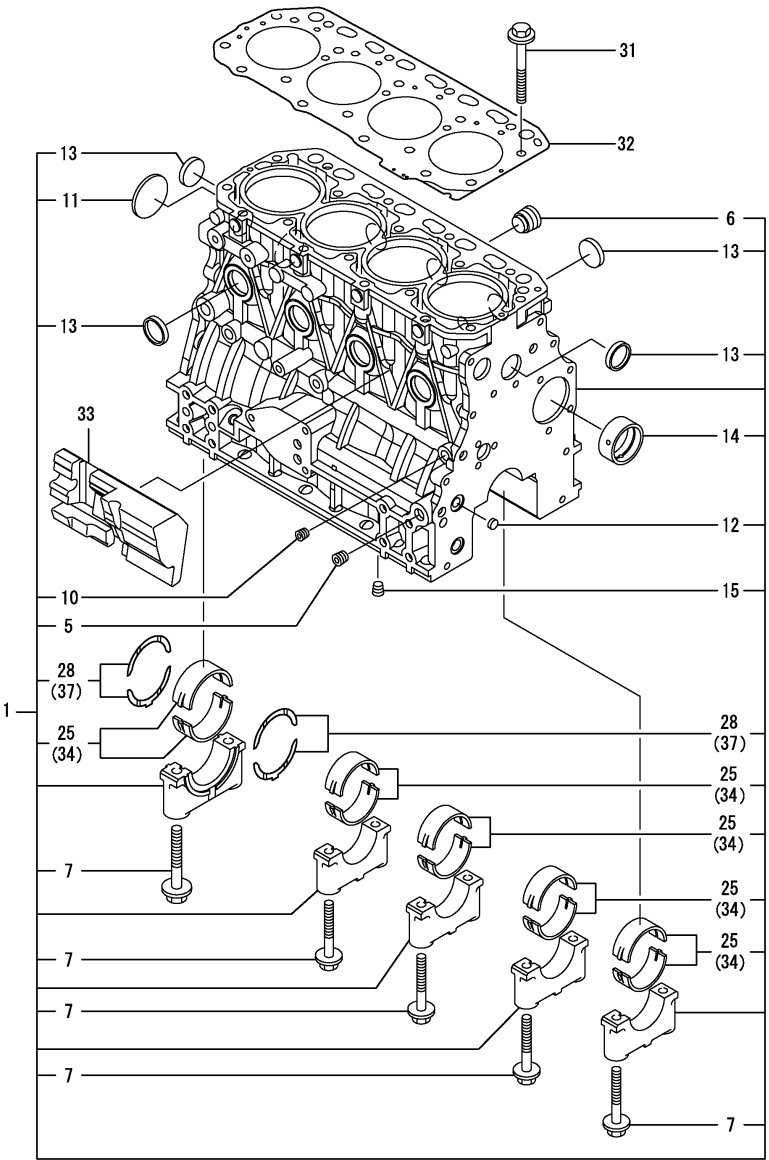
1. CYLINDER BLOCK
2. GEAR HOUSING
3. FLYWHEEL HOUSING & OIL SUMP
4. CYLINDER HEAD & BONNET
5. SUCTION MANIFOLD & AIR CLEANER
6. EXHAUST MANIFOLD & SILENCER
7. CAMSHAFT & DRIVING GEAR
8. TURBINE
9. CRANKSHAFT & PISTON
10. LUB. OIL SYSTEM
11. LUB. OIL LINE
12. COOLING WATER SYSTEM
13. FUEL INJECTION PUMP
14. GOVERNOR
15. FUEL INJECTION VALVE
16. FUEL LINE
17. STARTING MOTOR
18. GENERATOR
19. GASKET SET

Fig.No. GROUP NAME



(A)=4TNV84T-XSU
(B)=
(C)=

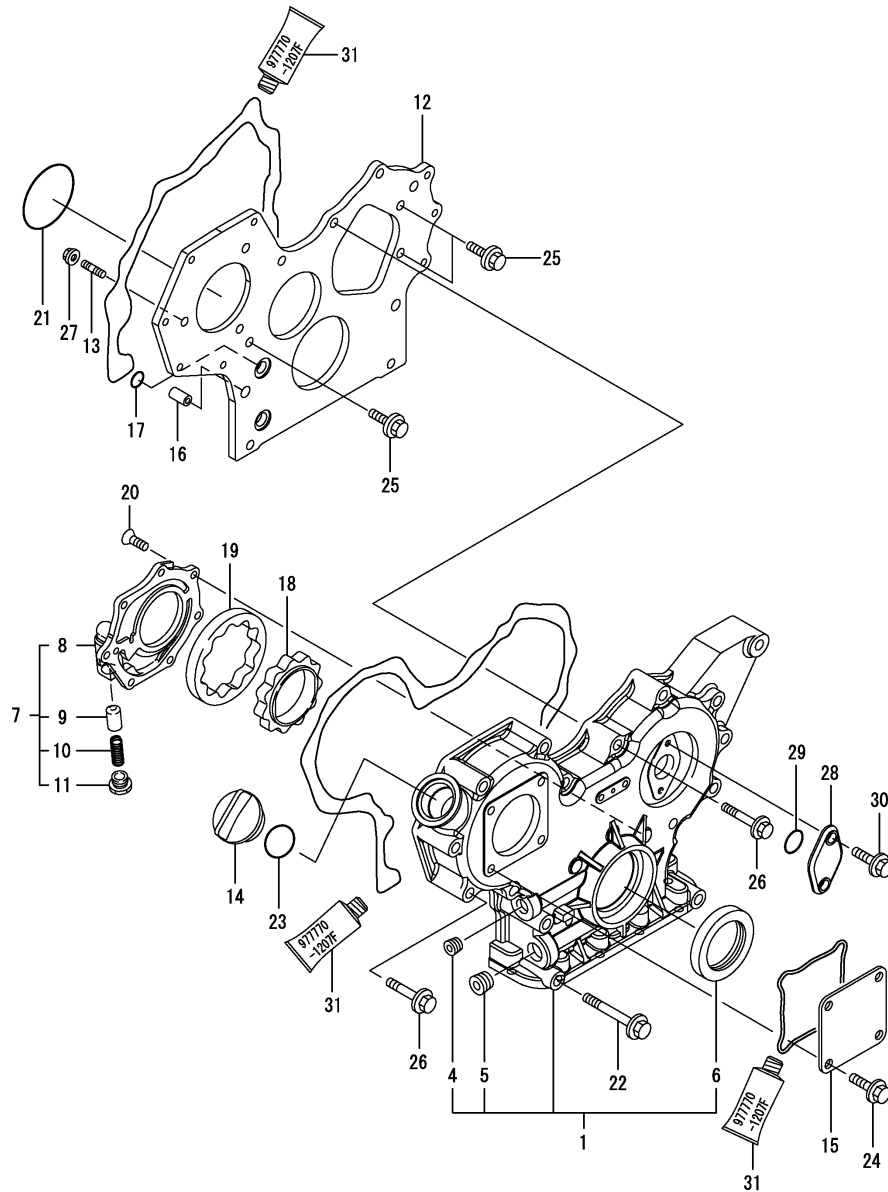
(D)=
(E)=
(F)=



REF.	LEV.	PARTS NO.	DESCRIPTION	Q'TY						I	R
				(A)	(B)	(C)	(D)	(E)	(F)		
1	1	729508-01560	BLOCK ASSY, CYLINDER	1							
5	2	124160-01910	PLUG PT1/4	2							
6	2	171051-01921	PLUG	1							
7	2	129150-02020	BOLT, METAL CAP	10							
10	2	124060-01050	PLUG PT1/8	1							
11	2	129001-01250	PLUG 50	1							
12	2	27241-120000	PLUG 12	2							
13	2	27241-300000	PLUG 30	8							
14	2	129795-02411	BUSH, CAMSHAFT	1							
15	2	124160-01910	PLUG PT1/4	1							
25	2	129001-02930	MAIN BEARING SET	5							3
28	2	129150-02930	METAL, THRUST	2							
31	1	129150-01200	STUD, CYL. HEAD	18							
32	1	129508-01330	GASKET, HEAD	1							
33	1	129004-01190	SPACER	1							
34	1	129150-02870	MAIN METAL US=0.25	5							1
37	1	129150-02940	METAL, THRUST.25(4PIE	1							2

Remarks
(1) UNDER-SIZE(U.S=0.25)PART.
(2) OVER-SIZE(O.S=0.25)PART.
(3) REPAIR PART.

REF.	LEV.	PARTS NO.	DESCRIPTION	Q'TY						I	R
				(A)	(B)	(C)	(D)	(E)	(F)		
1	1	729533-01500	GEAR CASE ASSY	1							
4	2	23876-030000	PLUG PT3/8,SCREW	1							
5	2	23876-040000	PLUG PT 1/2	1							
6	2	119934-01800	SEAL, OIL	1							
7	1	119802-32100	COVER ASSY, PUMP	1							
8	2	119802-32070	COVER, LUB.OIL PUMP	1							
9	2	129900-32130	VALVE, RELIEF	1							
10	2	129418-32320	SPRING	1							
11	2	129001-32330	PLUG	1							
12	1	119802-01520	FRANGE, GEAR CASE	1							
13	1	119802-01561	STUD, M8X25	3							
14	1	124160-01751	COVER,FILLER	1							
15	1	124240-01871	COVER, HO-P	1							
16	1	129795-01950	PIPE, KNOCK L=18	2							
17	1	119609-32040	O-RING P16	4							
18	1	129508-32111	ROTOR, INNER	1							
19	1	129508-32120	ROTOR, OUTER	1							
20	1	119802-32130	SCREW, M6X16	7							
21	1	121850-51960	O-RING, F.I.PUMP	1							
22	1	129001-91841	BOLT M 8X 85 PLATED	3							
23	1	24311-000320	O-RING 1A P-32.0	1							
24	1	26106-080162	BOLT M 8X 16 PLATED	4							
25	1	26106-080162	BOLT M 8X 16 PLATED	3							
26	1	26106-080552	BOLT M 8X 55 PLATED	12							
27	1	26306-080002	NUT	3							
28	1	121023-01551	COVER, BLIND	1							
29	1	24341-000240	O-RING 1A S-24.0	1							
30	1	26106-060162	BOLT M 6X 16 PLATED	2							
31	1	977770-1207F	GASKET.LIQUID	1							1



Remarks
(1) OPTIONAL PART.

N:Old $\xrightarrow{\text{Yes}}$ New, Q:Old $\xrightarrow{\text{No}}$ New, R:Old $\xrightarrow{\text{Yes}}$ New, S:Old $\xrightarrow{\text{No}}$ New, W:Add, Z:Discontinued, F:Interchangeable by set, K:Q'ty Change

(C)Copy Rights YANMAR CO.,LTD.

(A)=4TNV84T-XSU

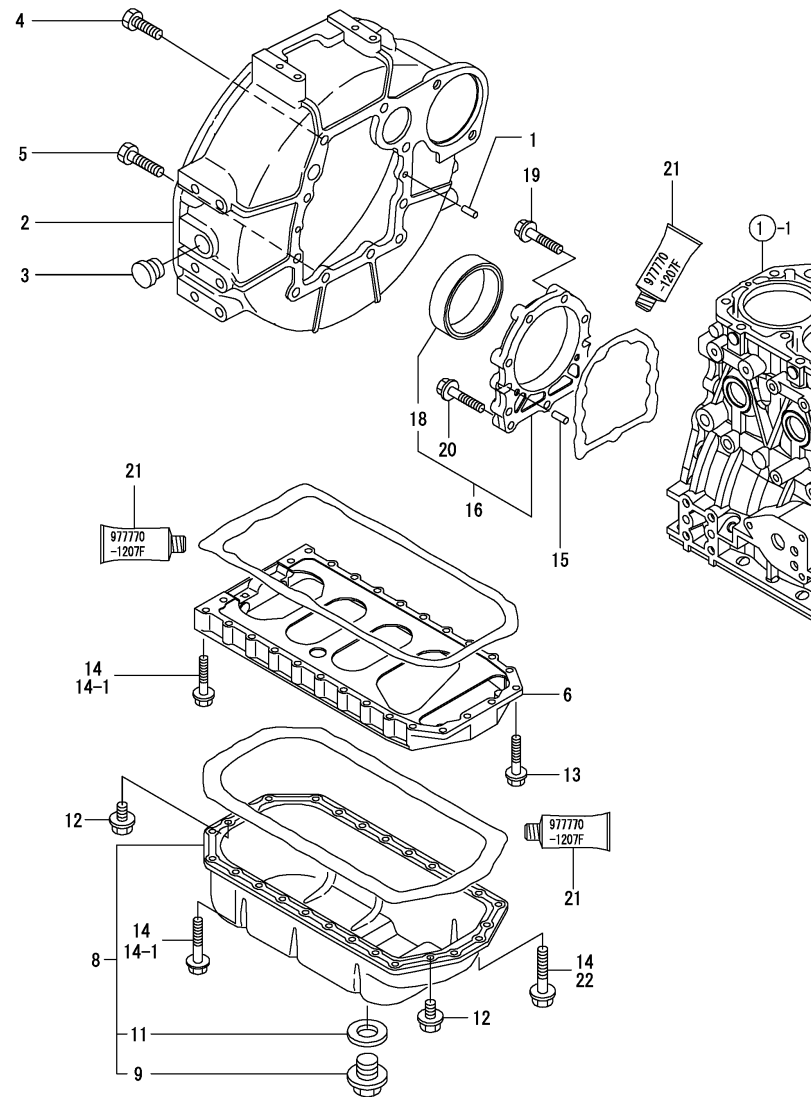
(B)=

(C)=

(D)=

(E)=

(F)=



REF.	LEV.	PARTS NO.	DESCRIPTION	(A)	(B)	(C)	(D)	(E)	(F)	I	R
1	1	129100-01580	PARALLEL PIN 8X16	2							
2	1	129612-01600	HOUSING,FLYWHEEL	1							
3	1	119620-01750	CAP, FLYWHEEL COVER	1							
4	1	26206-100252	BOLT M10X25	6							
5	1	26206-100302	BOLT M10X30	4							
6	1	129400-01730	SPACER, OIL SUMP	1							
8	1	129436-01780	SUMP ASSY, OIL	1							
9	2	119640-01640	DRAIN PLUG M22	1							
11	2	22190-220002	SEAL WASHER 22S	1							
12	1	26106-080162	BOLT M 8X 16 PLATED	4							
13	1	26106-080252	BOLT M 8X 25 PLATED	2							
14	1	26106-080452	BOLT M 8X 45 PLATED	24							
I 14-1	1	26106-080452	BOLT M 8X 45 PLATED	20							K
(A=FROM 1ST)											
15	1	129100-01580	PARALLEL PIN 8X16	2							
16	1	129648-01600	CASE ASSY, OIL SEAL	1							
18	2	129648-01780	SEAL, OIL	1							
19	1	129486-01670	BOLT M8X30,COLLAR HD	6							
20	1	26106-080352	BOLT M 8X 35 PLATED	3							
21	1	977770-1207F	GASKET.LIQUID	1							1
I 22	1	26106-080502	BOLT M 8X 50 PLATED	4							W

(A=FROM 1ST)

Remarks
(1) OPTIONAL PART.

(A)=4TNV84T-XSU

(B)=

(C)=

(D)=

(E)=

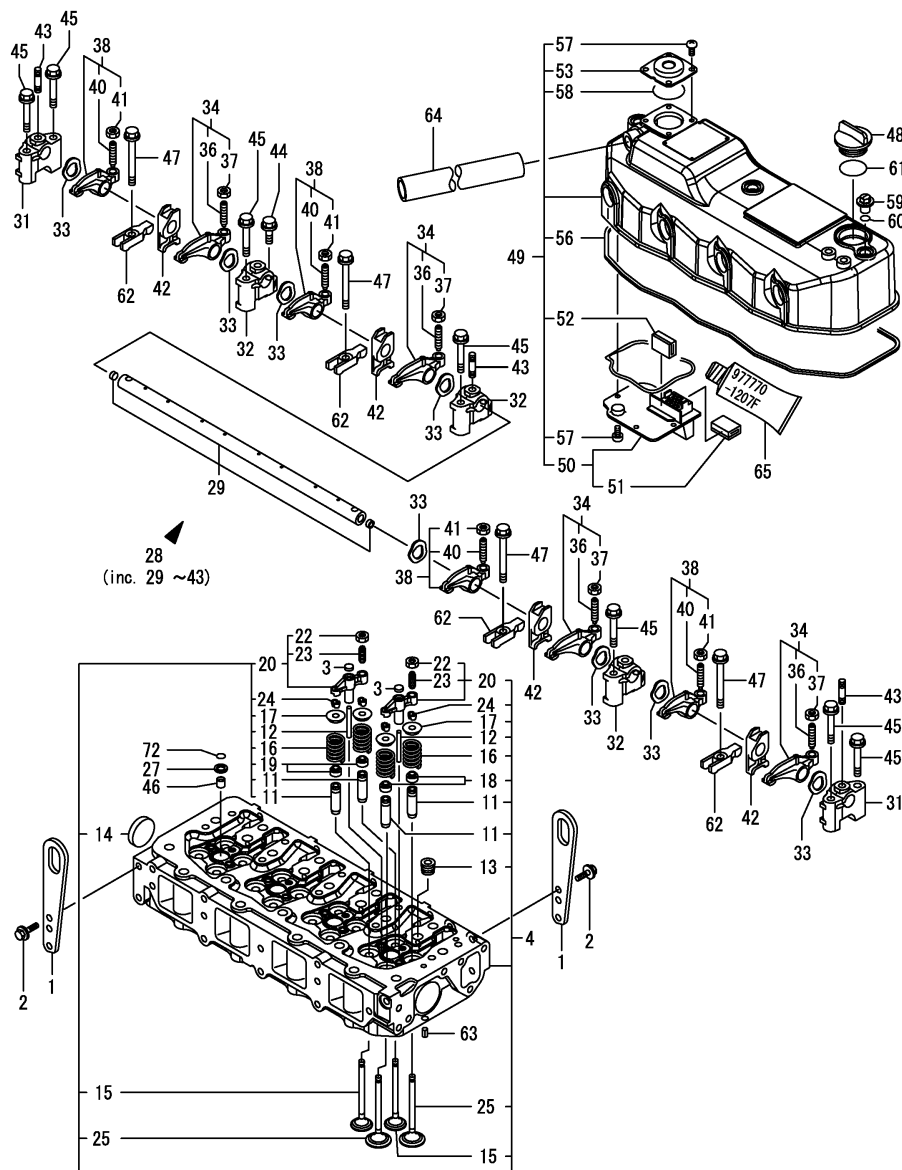
(F)=

REF.	LEV.	PARTS NO.	DESCRIPTION	Q'TY						I	R
				(A)	(B)	(C)	(D)	(E)	(F)		
1	1	129900-07900	LIFTER, ENGINE	2							
2	1	26106-080162	BOLT M 8X 16 PLATED	4							
3	1	123907-11550	SEAT A, VALVE BRIDGE	8							
4	1	129508-11700	HED ASSY, CYLINDER	1							
11	2	119717-11800	GUIDE, VALVE	16							1
12	2	129508-11820	GUIDE, VALVE BRIDGE	8							
13	2	23876-020000	PLUG PT1/4, SCREW	4							
14	2	27241-400000	PLUG 40	2							
15	2	129508-11110	VALVE, EXHAUST	8							
16	2	129508-11130	SPRING, VALVE	16							
17	2	129508-11180	RETAINER, SPRING	16							
18	2	119717-11340	SEAL, VALVE STEM	8							
19	2	119717-11350	SEAL, VALVE STEM	8							
20	2	129672-11510	BRIDGE, VALVE	8							
22	3	129150-11750	NUT M8XP1.0	8							
23	3	123907-11830	SCRWE, VALVE BRIDGE	8							
24	2	119717-11190	COTTER, VALVE	32							
25	2	129508-11100	VALVE, INTAKE	8							
27	1	119625-11880	SEAT, NOZZLE	4							
28	1	129508-11241	SHAFT ASSY, ROCKER	1							
29	2	129508-11250	SHAFT	1							
31	2	129508-11260	SUPPORT, ROCKER ARM	2							
32	2	129508-11270	SUPPORT, ROCKER ARM	3							
33	2	129508-11280	WASHER, WAVE M	8							
34	2	129508-11650	ARM ASSY, ROCKER	4							
36	3	129150-11230	SCREW, VALVE	4							
37	3	129150-11750	NUT M8XP1.0	4							
38	2	129508-11660	ARM ASSY, ROCKER	4							
40	3	129150-11230	SCREW, VALVE	4							
41	3	129150-11750	NUT M8XP1.0	4							
42	2	129508-11920	PEDESTAL, RETAINER	4							
43	2	26226-080352	STUD M 8X 35 PLATED	3							
44	1	26106-080252	BOLT M 8X 25 PLATED	3							
45	1	26106-080502	BOLT M 8X 50 PLATED	7							
46	1	119802-11870	PROTECTOR, NOZZLE	4							
47	1	129907-11950	FLANGE BOLT, RETAINER	4							
48	1	124160-01751	COVER, FILLER	1							
49	1	129508-11350	BONNET ASSY	1							
50	2	129508-03010	PLATE, BAFFLE	1							
51	3	119802-03070	BAFFLE, BREATHER	1							
52	2	129150-03070	BAFFLE, BREATHER	1							
53	2	129006-03120	COVER, DIAPHRAGM	1							
56	2	129508-11310	PK, BONNET	1							
57	2	22857-500100	SCREW 5X10, TAPPING	8							
58	2	24341-000400	O-RING 1A S-40.0	1							
59	1	124160-11360	KNOB	3							
60	1	24311-000120	O-RING 1A P 12.0	3							
61	1	24311-000320	O-RING 1A P-32.0	1							
62	1	129508-11900	RETAINER, F.I. VALVE	4							
63	1	22351-060012	SPRING PIN 6X12	2							
64	1	129150-03090	PIPE	1							

N:Old $\xrightarrow{\text{Yes}}$ New, Q:Old $\xrightarrow{\text{No}}$ New, R:Old $\xrightarrow{\text{Yes}}$ New, S:Old $\xrightarrow{\text{No}}$ New, W:Add, Z:Discontinued, F:Interchangeable by set, K:Q'ty Change

++ CONTINUE ++

(C)Copy Rights YANMAR CO.,LTD.

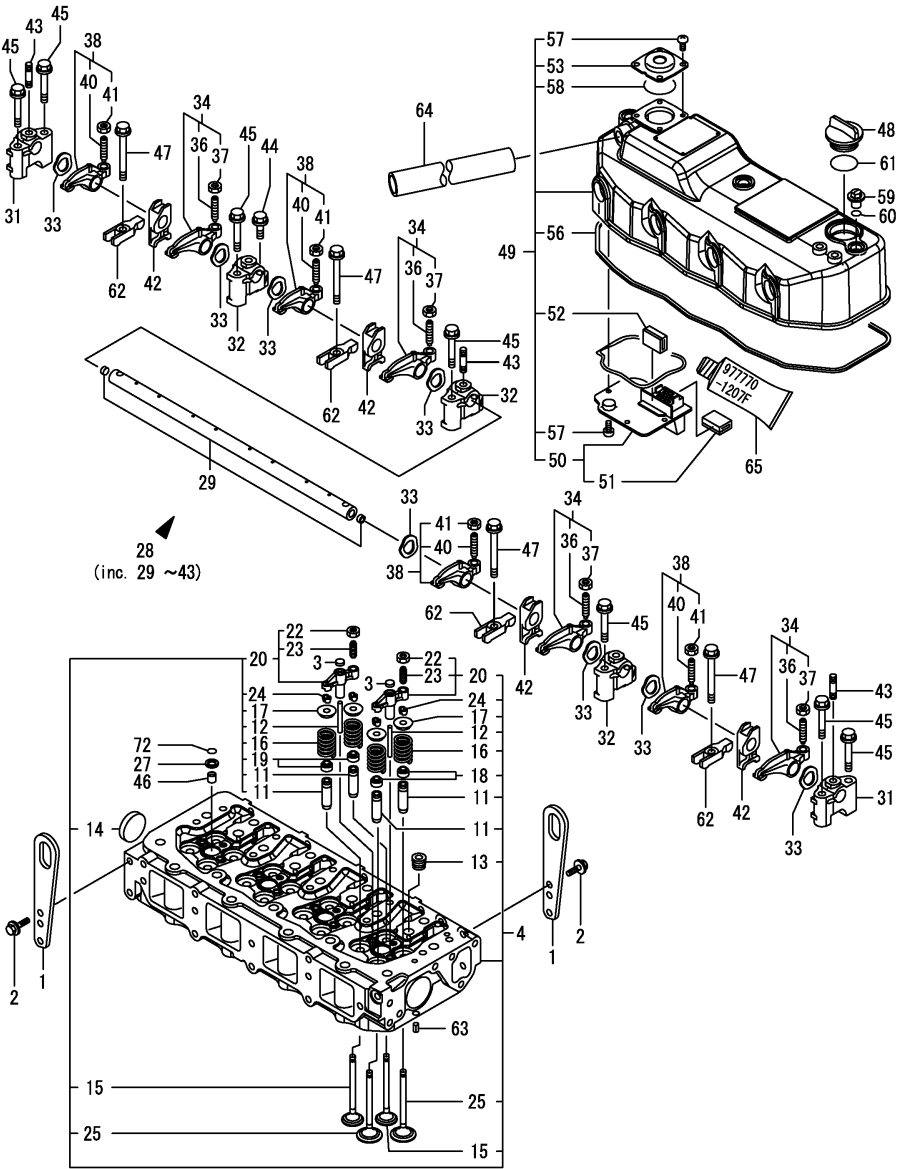


Remarks
(1) REPAIR PART.
(2) OPTIONAL PART.

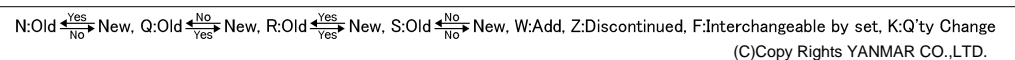
(A)=4TNV84T-XSU
(B)=
(C)=

(D)=
(E)=
(F)=

REF.	LEV.	PARTS NO.	DESCRIPTION	Q'TY						I	R
				(A)	(B)	(C)	(D)	(E)	(F)		
65	1	977770-1207F	GASKET.LIQUID	1							2
72	1	24311-000120	O-RING 1A P-12.0	4							



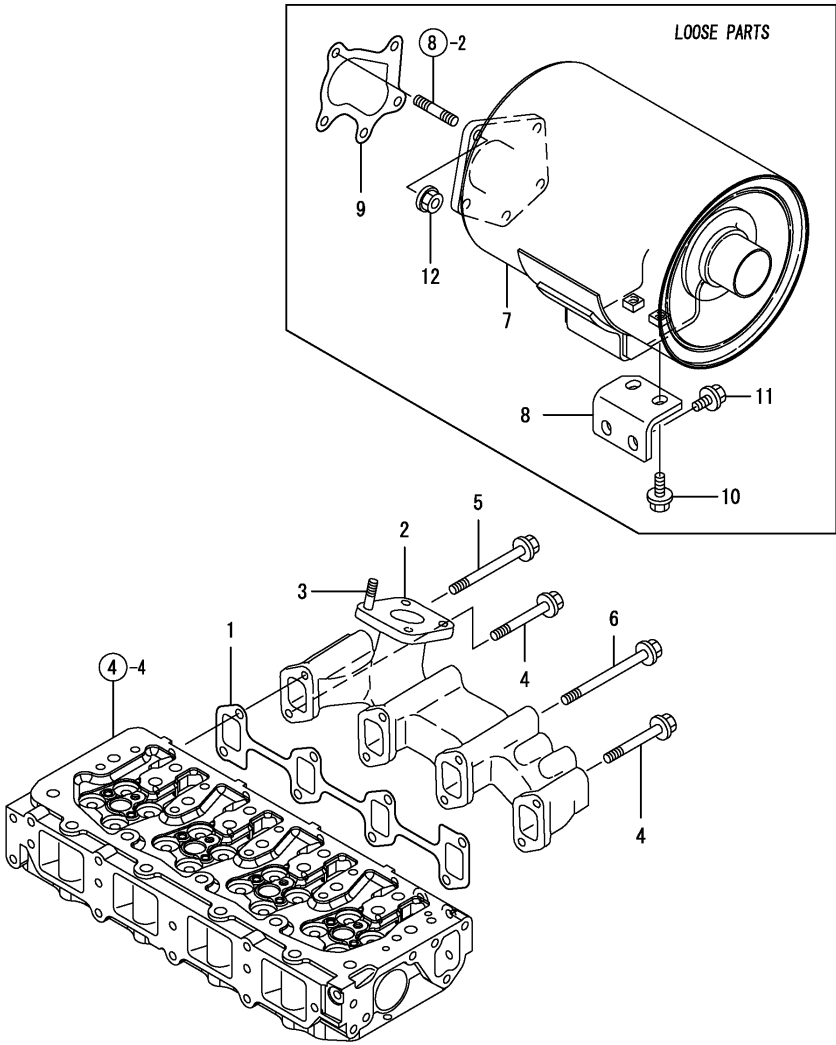
Remarks
(1) REPAIR PART.
(2) OPTIONAL PART.



(A)=4TNV84T-XSU
(B)=
(C)=

(D)=
(E)=
(F)=

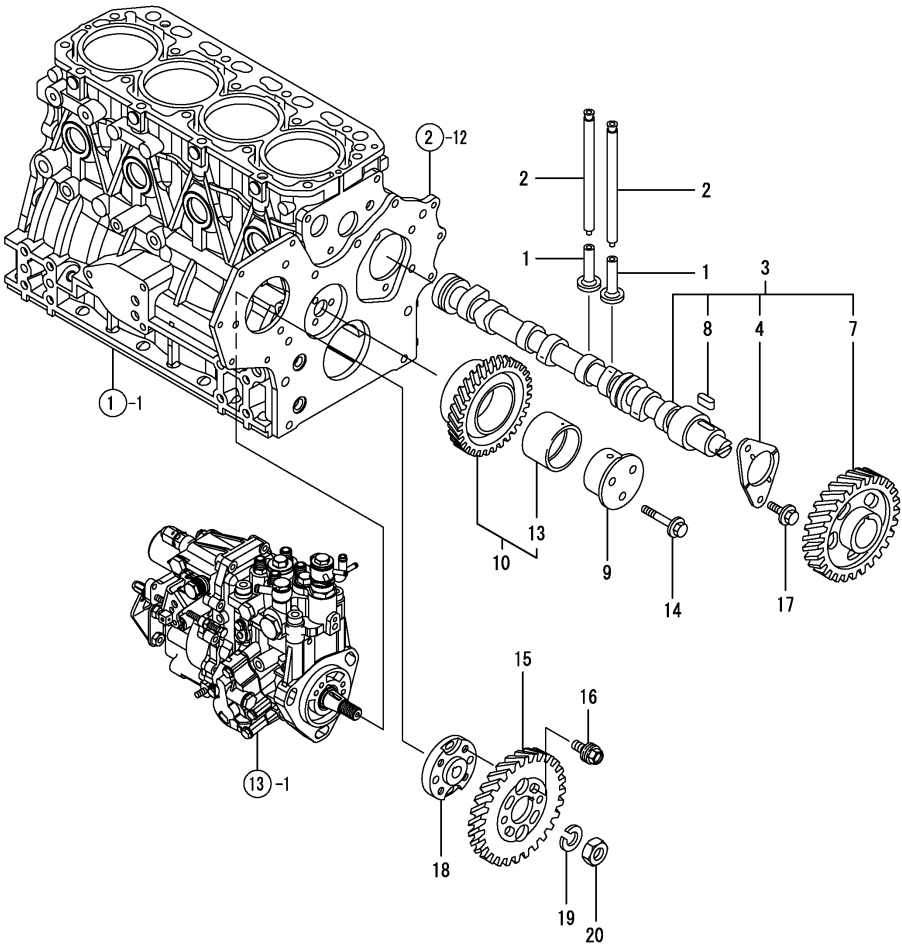
REF.	LEV.	PARTS NO.	DESCRIPTION	Q'TY						I	R
				(A)	(B)	(C)	(D)	(E)	(F)		
1	1	129550-13110	GASKET, EXH.MANIFOLD	1							
2	1	129403-13120	MANIFOLD, EXHAUST	1							
3	1	119131-18320	BOLT M 8X 22	4							
4	1	119802-13650	BOLT, M8X65	3							
5	1	119802-13670	BOLT M 8X 85 PLATED	1							
6	1	129693-44310	BOLT(CFW COOLER	4							
6-1	1	119802-13820	BOLT, M8X110	4						N	
(A=*2009.12)											
7	1	129648-13520	MUFFLER	1							
8	1	129648-13570	SUPPORT, SILENCER	1							
9	1	129508-18090	GASKET, TURBOCHARGER	1							
10	1	26106-080202	BOLT M 8X 20 PLATED	2							
11	1	26106-080162	BOLT M 8X 16 PLATED	2							
12	1	26306-080002	NUT	5							



(A)=4TNV84T-XSU
(B)=
(C)=

(D)=
(E)=
(F)=

REF.	LEV.	PARTS NO.	DESCRIPTION	Q'TY						I	R
				(A)	(B)	(C)	(D)	(E)	(F)		
1	1	129150-14200	TAPPET	8							
2	1	129150-14400	ROD, PUSH	8							
3	1	129508-14580	CAMSHAFT ASSY	1							
4	2	129150-02450	METAL,THRUST(CAM	1							
7	2	129150-14101	GEAR, CAMSHAFT	1							
8	2	22512-070140	KEY 7X 14	1							
9	1	119802-25051	SHAFT, IDLE GEAR	1							
10	1	119802-25100	GEAR ASSY, IDLE	1							
13	2	119802-25070	BUSH, IDLE GEAR	1							1
14	1	26106-080402	BOLT M 8X 40 PLATED	3							
15	1	119802-25901	GEAR, PUMP	1							
16	1	129150-25301	BOLT,FI-P	4							
17	1	26106-080142	BOLT 8X 14 PLATED	2							
18	1	158552-51151	FLANGE	1							
19	1	22217-140000	SPRING WASHER 14	1							
20	1	26776-140002	LOCK NUT M14 PLATED	1							



Remarks
(1) REPAIR PART.

(A)=4TNV84T-XSU

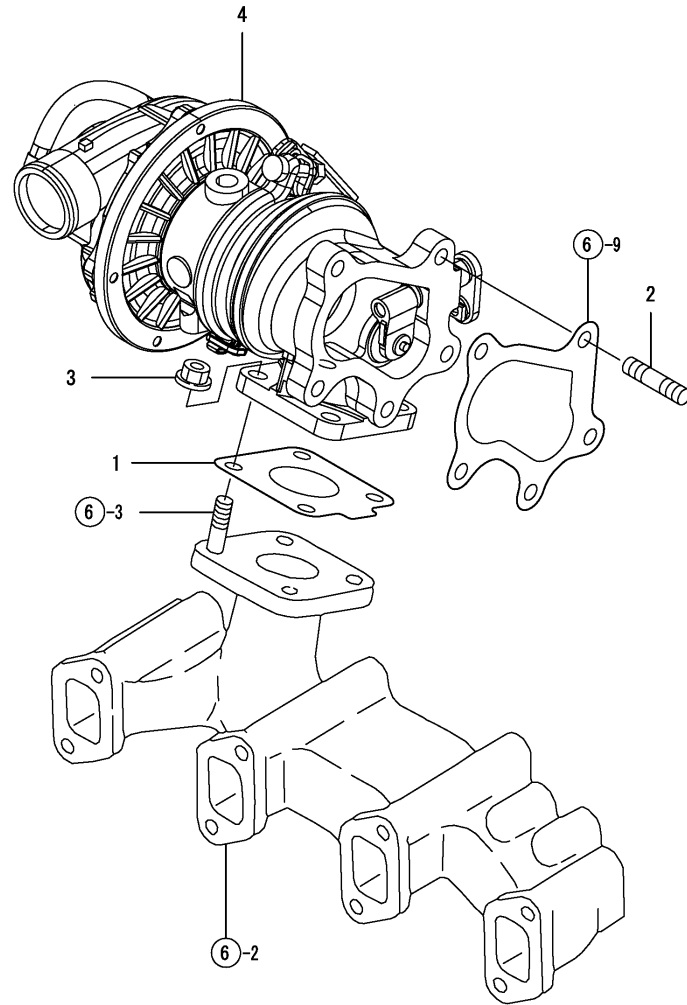
$$(B)=$$

(C)=

(D)=

$$(E)=$$
$$(F)=$$

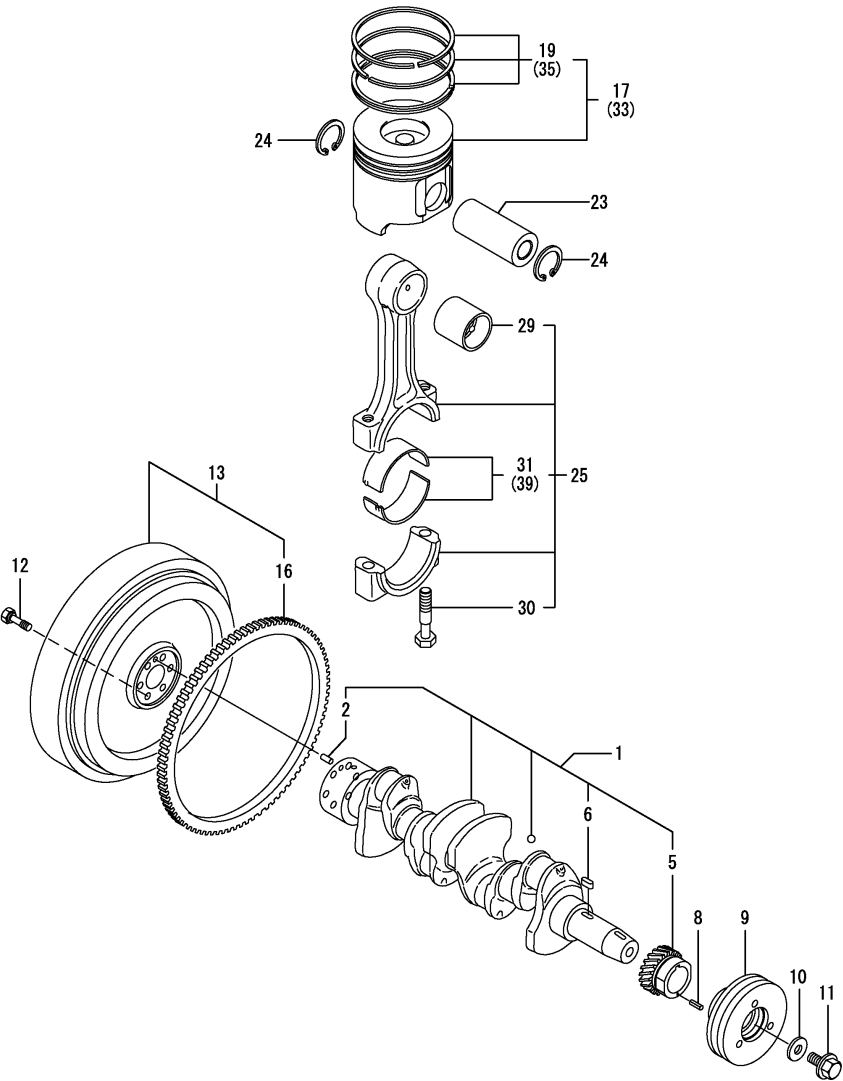
REF.	LEV.	PARTS NO.	DESCRIPTION	QTY						I	R
				(A)	(B)	(C)	(D)	(E)	(F)		
1	1	129508-18080	GASKET	1							
2	1	129418-18320	STUD BOLT M8X20	5							
3	1	26306-080002	NUT	4							
4	1	129508-18010	TURBINE, RHF4	1							



(A)=4TNV84T-XSU
(B)=
(C)=

(D)=
(E)=
(F)=

REF.	LEV.	PARTS NO.	DESCRIPTION	Q'TY						I	R
				(A)	(B)	(C)	(D)	(E)	(F)		
1	1	129508-21002	CRANKSHAFT ASSY	1							
2	2	129100-01580	PARALLEL PIN 8X16	1							
5	2	119802-21202	GEAR, CRANKSHAFT	1							
6	2	22512-070140	KEY 7X 14	1							
8	1	22351-030010	SPRING PIN 3X10	1							
9	1	119802-21660	V-PULLEY, CRANKSHAFT	1							
10	1	129795-21661	WASHER	1							
11	1	121850-21680	BOLT, V-PULLEY	1							
12	1	121111-21501	BOLT, FLYWHEEL	6							
13	1	129489-21590	FLYWHEEL ASSY	1							
16	2	119865-21600	GEAR, RING	1							
17	1	129508-22080	PISTON ASSY	4							
19	2	129004-22500	RING SET	4							
23	1	129202-22300	PIN, PISTON(D26,L70)	4							
24	1	22252-000260	CIRCLIP 26	8							
25	1	729402-23100	ROD ASSY, CONNECTING	4							
29	2	129100-23910	BUSH, PISTON PIN	4							1
30	2	121550-23200	BOLT, CONNECTING ROD	8							
31	2	129150-23600	METAL, CRANKPIN	4							
33	1	129508-22900	PISTON W/RING OS=.25	4							2
35	2	129004-22950	RING SET O.S=.0.25	4							2
39	1	129150-23610	METAL.PIN US=.0.25	4							3



Remarks
(1) REPAIR PART.
(2) OVER-SIZE(O.S=0.25)PART.
(3) UNDER-SIZE(U.S=0.25)PART.

(A)=4TNV84T-XSU

(B)=

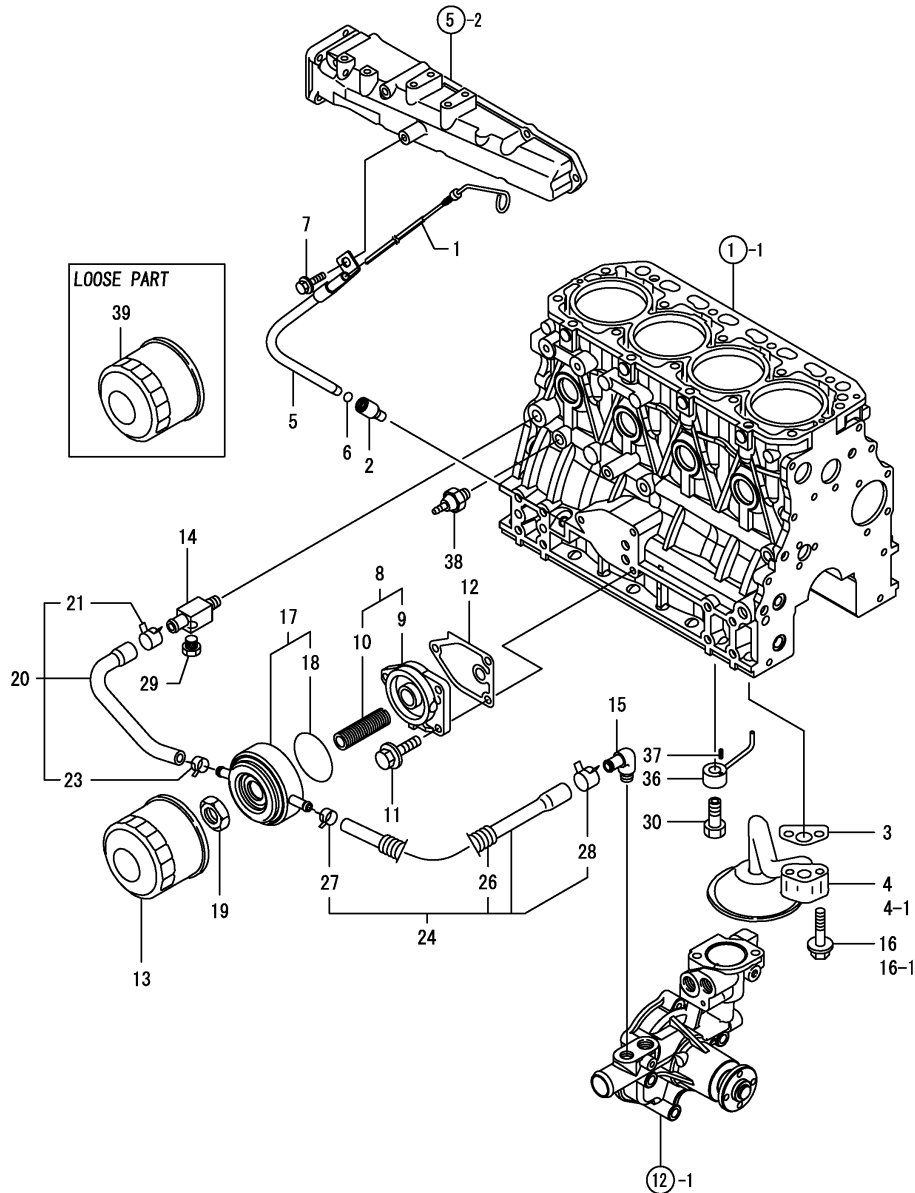
(C)=

(D)=

(E)=

(F)=

REF.	LEV.	PARTS NO.	DESCRIPTION	Q'TY						I	R
				(A)	(B)	(C)	(D)	(E)	(F)		
1	1	129601-34801	DIPSTICK	1							
2	1	119260-34810	GUIDE	1							
3	1	129150-35042	GASKET	1							
4	1	129436-35091	PIPE ASSY	1							
4-1	1	129436-35070	PIPE ASSY, LUB. OIL	1							S
(A=EZZZZZ)											
5	1	119802-34850	GUIDE	1							
6	1	24311-240100	O-RING 1A P-10A	1							
7	1	26106-080162	BOLT M 8X 16 PLATED	1							
8	1	129006-35100	BRACKET ASSY	1							
9	2	119802-35110	BRACKET	1							
10	2	129417-35150	STUD	1							
11	1	26106-080202	BOLT M 8X 20 PLATED	3							
12	1	129150-35111	GASKET	1							
13	1	129150-35153	FILTER 80X80L	1							1
14	1	129006-44480	JOINT	1							
15	1	129103-49301	ELBOW	1							
16	1	26106-080352	BOLT M 8X 35 PLATED	2							
16-1	1	26106-080552	BOLT M 8X 55 PLATED	2							S
(A=EZZZZZ)											
17	1	129508-33010	COOLER ASSY	1							
18	2	129508-33050	O-RING	1							
19	1	129417-33110	NUT	1							
20	1	129508-49030	PIPE ASSY	1							
21	2	171008-03990	CLIP	1							
23	2	23080-015000	CLAMP	1							
24	1	129508-49040	PIPE ASSY	1							
26	2	119940-59130	TUBE	1							
27	2	23080-015000	CLAMP	1							
28	2	23080-018000	CLAMP 18	1							
29	1	171056-49120	PLUG	1							
30	1	129792-39410	VALVE ASSY	4							
36	1	129553-39650	NOZZLE	4							
37	1	22351-030010	SPRING PIN 3X10	4							
38	1	114250-39450	SWITCH	1							
39	1	129150-35153	FILTER 80X80L	1							1



Remarks
(1) REPAIR PART.

N:Old $\xrightarrow{\text{Yes}}$ New, Q:Old $\xrightarrow{\text{No}}$ New, R:Old $\xrightarrow{\text{Yes}}$ New, S:Old $\xrightarrow{\text{No}}$ New, W:Add, Z:Discontinued, F:Interchangeable by set, K:Q'ty Change

(C)Copy Rights YANMAR CO.,LTD.

(A)=4TNV84T-XSU

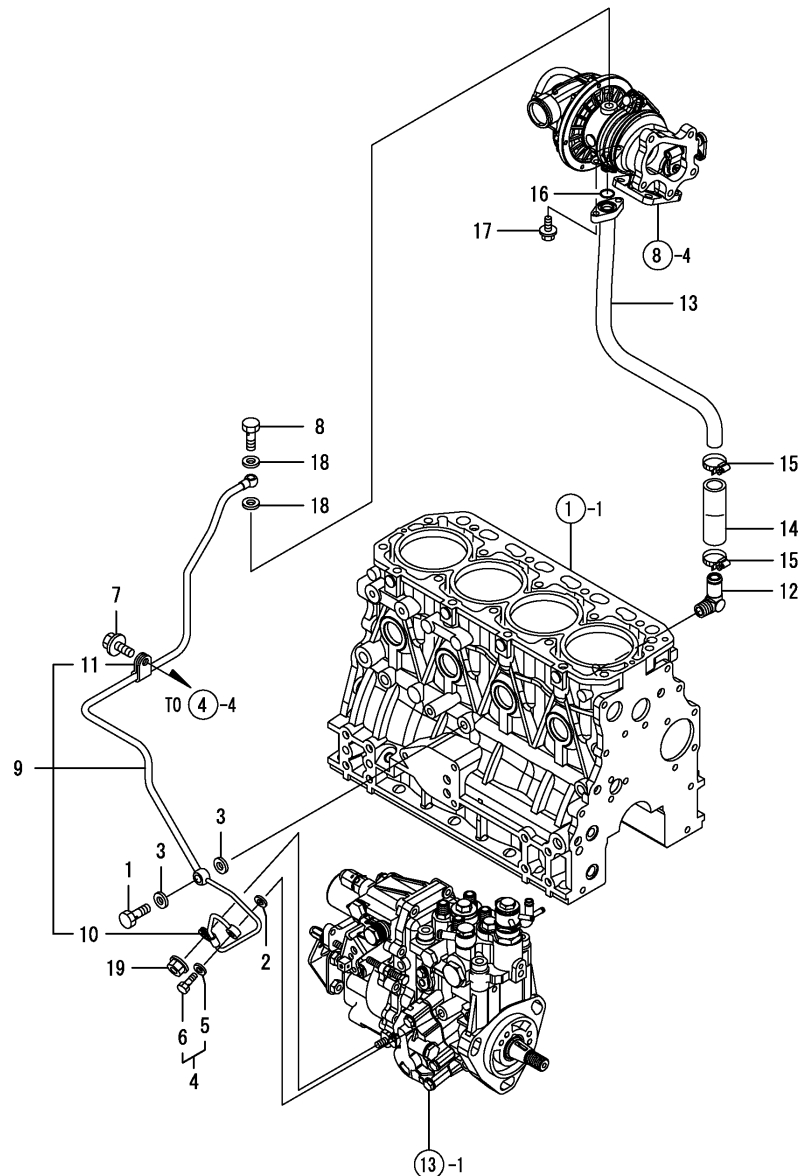
(B)=

(C)=

(D)=

(E)=

(F)=



REF.	LEV.	PARTS NO.	DESCRIPTION	Q'TY						I	R
				(A)	(B)	(C)	(D)	(E)	(F)		
1	1	124160-39140	BOLT 10, PIPE JOINT	1							
2	1	22190-080002	SEAL WASHER 8S	1							
3	1	22190-100002	SEAL WASHER 10S	2							
4	1	129005-59830	BOLT ASSY, JOINT	1							
5	2	22190-080002	SEAL WASHER 8S	1							
6	2	23857-030000	JOINT BOLT 3	1							
7	1	26106-080122	BOLT M 8X 12 PLATED	1							
8	1	121252-39150	BOLT, PIPE JOINT	1							
9	1	129508-39450	PIPE ASSY, LUB. OIL	1							
10	2	119802-39500	RETAINER	1							
11	2	124223-39900	RETAINER	1							
12	1	124070-13300	ELBOW (PT3/8)	1							
13	1	129508-39600	PIPE, FUEL RETURN	1							
14	1	123901-39820	HOSE	1							
15	1	23000-025000	CLAMP 25	2							
16	1	24316-000160	O-RING 4D P-16.0	1							
17	1	26106-060162	BOLT M 6X 16 PLATED	2							
18	1	23414-100000	GASKET 10, ROUND	2							
19	1	26366-060002	NUT M 6	1							

(A)=4TNV84T-XSU

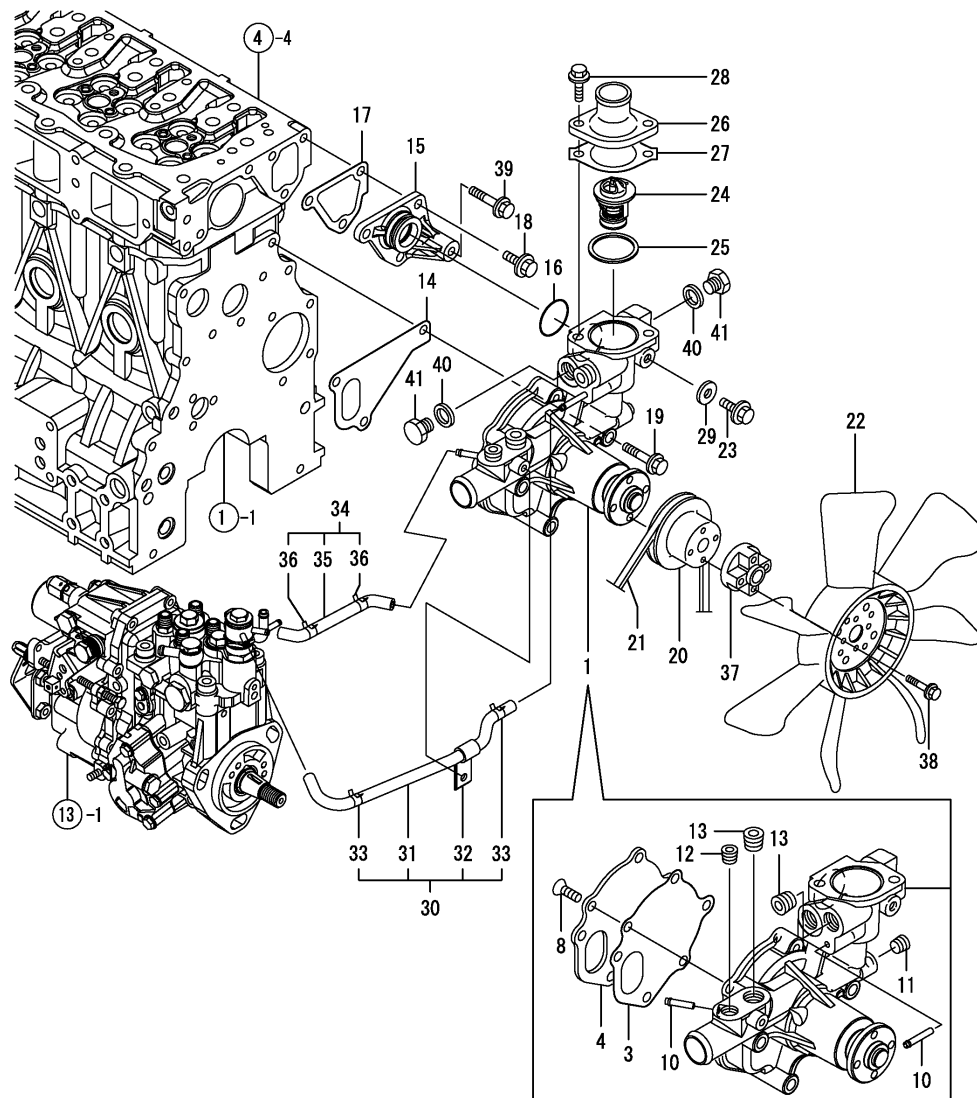
(B)=

(C)=

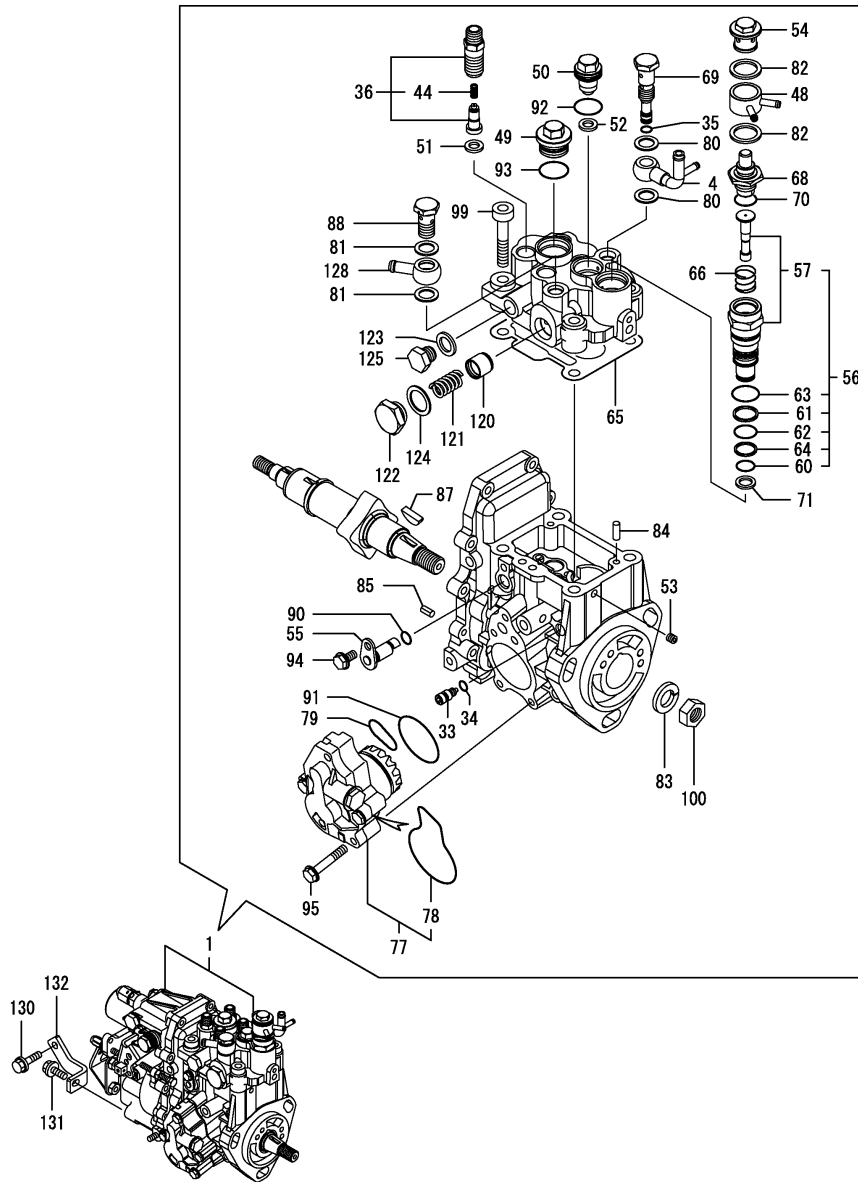
(D)=

(E)=

(F)=



REF.	LEV.	PARTS NO.	DESCRIPTION	Q'TY						I	R
				(A)	(B)	(C)	(D)	(E)	(F)		
1	1	129508-42001	PUMP ASSY, C.W.	1							
3	2	129100-42051	GASKET, (NON-ASB.)	1							
4	2	129100-42121	PLATE	1							
8	2	121850-42410	SCREW	3							
10	2	119802-49113	JOINT	2							
11	2	23876-010000	PLUG PT1/8,SCREW	1							
12	2	23876-020000	PLUG PT1/4,SCREW	1							
13	2	129916-49740	PLUG, DRAIN R03	2							
14	1	129486-42021	GASKET	1							
15	1	129004-42040	JOINT	1							
16	1	129486-42140	O-RING,CW-P	1							
17	1	124395-49840	GASKET, THERMO. CASE	1							
18	1	26106-080162	BOLT M 8X 16 PLATED	3							
19	1	26106-080602	BOLT M 8X 60 PLATED	3							
20	1	129155-42350	V-PULLEY, C.W. PUMP	1							
21	1	25132-003800	V-BELT A-38	1							
22	1	129648-44700	FAN, COOLING	1							
23	1	26106-080122	BOLT M 8X 12 PLATED	1							
24	1	129155-49801	THERMOSTAT (71)	1							
25	1	129150-49811	GASKET, (NON-ASB.)	1							
26	1	129350-49530	COVER, THERMOSTAT	1							
27	1	129795-49551	GASKET, (NON-ASB.)	1							
28	1	26106-080222	BOLT M 8X 22 PLATED	2							
29	1	23414-080000	GASKET 8, ROUND	1							
30	1	129004-49610	PIPE ASSY, A MP2	1							
31	2	129004-49711	PIPE ASSY, A MP2	1							
32	2	119802-49730	CLAMP,CW-T	1							
33	2	124722-59050	CLAMP 9	2							
34	1	129004-49620	PIPE ASSY, B MP2	1							
35	2	129004-49721	PIPE, WATER B MP2	1							
36	2	124722-59050	CLAMP 9	2							
37	1	171353-44760	SPACER	1							
38	1	26106-060402	BOLT M 6X 40 PLATED	4							
39	1	26106-080452	BOLT M 8X 45 PLATED	1							
40	1	124465-44950	GASKET 16	2							
41	1	121450-42450	PLUG M16	2							



Remarks
(1) GOVERNOR ASSY(FIG.14) IS
INCORPORATED IN THIS FOP.CMP
(REF.NO.1).

REF.	LEV.	PARTS NO.	DESCRIPTION	Q'TY						I	R
				(A)	(B)	(C)	(D)	(E)	(F)		
1	1	729648-51350	PUMP ASSY, F.INJECT	1							1
4	2	158552-51670	JOINT	1							
33	2	158600-51270	STOPPER	1							
34	2	158563-51281	O-RING	1							
35	2	158563-51281	O-RING	1							
36	2	129009-51390	SETTING, DELIVERY	4							W
(A)=2008.02.)											
I 44	3	158563-51330	SPRING	4							
48	2	158553-51551	JOINT, COOLING WATER	1							
49	2	158601-51550	PLUG	1							
50	2	119802-51560	BARREL PLUG	1							
51	2	158552-51570	PK(BARREL PLUG	4							
52	2	158552-51570	PK(BARREL PLUG	1							
53	2	158557-51570	PLUG	1							
54	2	158601-51570	PLUG, WATER PUMP	1							
55	2	158552-51580	LIFTER	1							
56	2	119802-51590	TIMER SET	1							
57	3	119802-51600	TIMER CMP	1							
60	3	158553-51670	O-RING, 1011	1							
61	3	119802-51680	BACKUP RING	1							
62	3	119802-51690	O RING	1							
63	3	24356-010200	PACKING, 1020	1							
64	3	24372-000150	RING, BACKUP T2 P 15	1							
65	2	158552-51600	PACKING, HEAD	1							
66	2	158553-51630	SPRING, TIMER	1							
68	2	158553-51640	ELEMENT, THERMO	1							
69	2	158601-51650	JOINT	1							
70	2	158553-51660	O-RING, P14	1							
71	2	158553-51680	PACKING, TIMER	1							
77	2	158552-52100	PUMP ASSY, FEED	1							
78	3	158552-52500	O-RING(FEED P INNER	1							
79	2	158552-52310	O-RING	1							
80	2	22190-120002	SEAL WASHER 12	2							
81	2	22190-120002	SEAL WASHER 12	2							
82	2	22190-180002	SEAL WASHER 18	2							
83	2	22217-140000	SPRING WASHER 14	1							
84	2	22312-050140	PARALLEL PIN 5X14	2							
85	2	22351-050010	SPRING PIN 5X10	2							
87	2	119802-51090	KEY, WOODRUFF 4X16	1							
88	2	23857-060000	JOINT BOLT 6, PIPE	1							
90	2	24311-000070	O-RING 1A P-7.0	1							
91	2	158552-52400	O-RING 4E S42	1							
92	2	24356-010180	O-RING	1							
93	2	24356-010200	PACKING, 1020	1							
94	2	26106-060102	BOLT 6X 10 PLATED	1							
95	2	158553-51770	BOLT	4							
99	2	26450-080452	BOLT M 8X 45	4							
100	2	26776-140002	LOCK NUT M14 PLATED	1							
120	2	158601-51770	PISTON	1							
121	2	158552-51780	DAMPER ASSY	1							
121-1	2	158552-51781	DAMPER ASSY	1							N

N:Old New, Q:Old New, R:Old New, S:Old New, W:Add, Z:Discontinued, F:Interchangeable by set, K:Q'ty Change

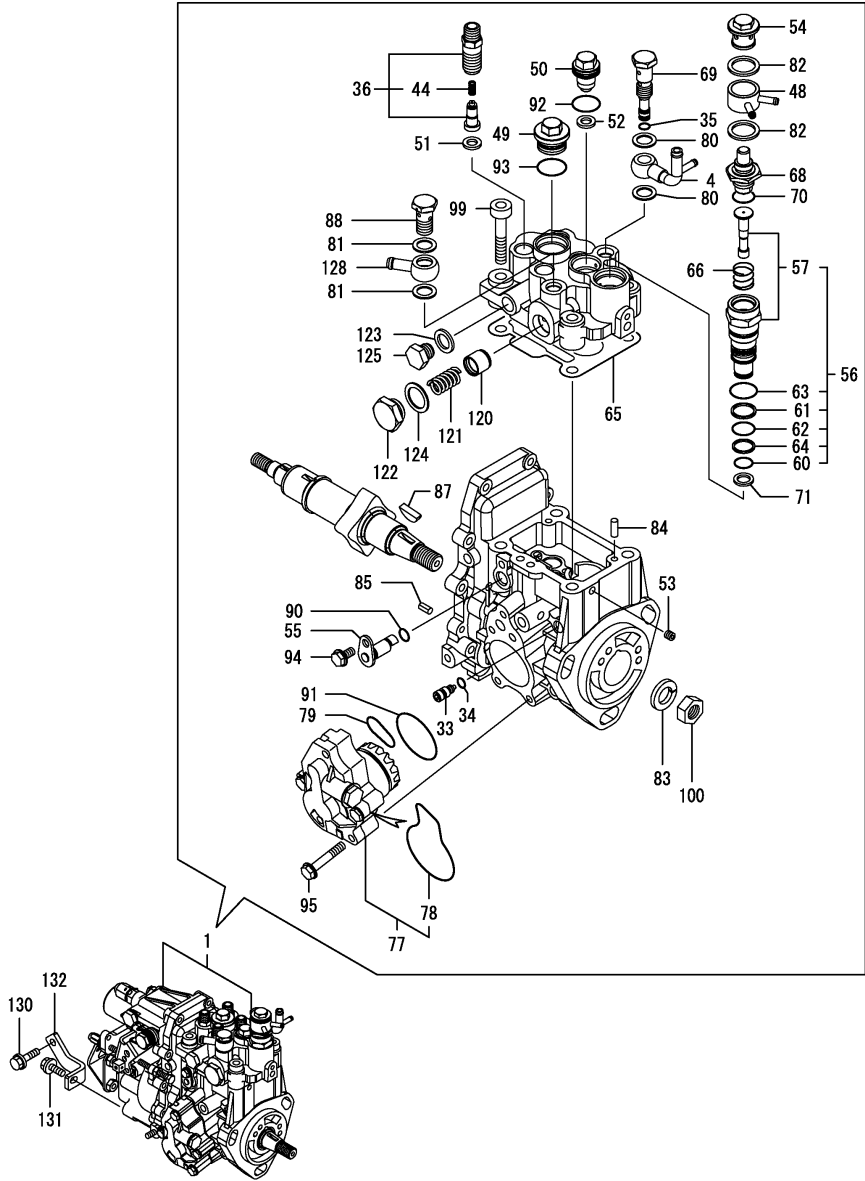
++ CONTINUE ++

(C)Copy Rights YANMAR CO.,LTD.

(A)=4TNV84T-XSU
(B)=
(C)=

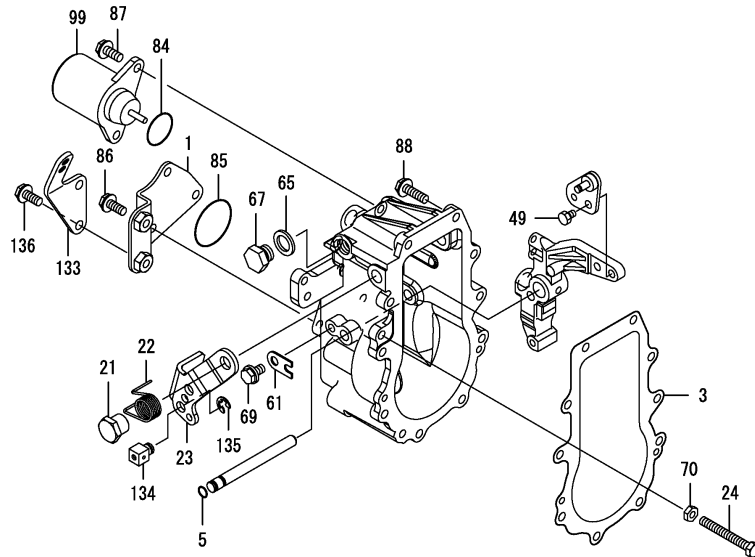
(D)=
(E)=
(F)=

REF.	LEV.	PARTS NO.	DESCRIPTION	QTY						I	R
				(A)	(B)	(C)	(D)	(E)	(F)		
(A=E/#*****)											
122	2	158601-51790	PLUG	1							
123	2	22190-120002	SEAL WASHER 12	1							
124	2	22190-180002	SEAL WASHER 18	1							
125	2	23887-120002	PLUG M12,HEX.	1							
128	2	129916-59020	JOINT 12, PIPE	1							
130	1	26106-080302	BOLT M 8X 30 PLATED	1							
131	1	26106-080202	BOLT M 8X 20 PLATED	1							
132	1	129508-51250	SUPPORT,FIP	1							



Remarks
(1) GOVERNOR ASSY(FIG.14) IS
INCORPORATED IN THIS FOP.CMP
(REF.NO.1).

REF.	LEV.	PARTS NO.	DESCRIPTION	(A)	(B)	(C)	(D)	(E)	(F)	I	R
1	2	129044-61060	COVER, CASE	1							
3	2	158553-61050	PACKING, CASE	1							
5	2	129155-51280	O-RING S6	1							
21	2	129255-61410	NUT	1							
22	2	119807-61420	SPRING	1							
23	2	158552-61441	LEVER, REGULATOR	1							
24	2	129155-61460	BOLT, IDLE LIMIT	1							
49	2	26116-060102	BOLT M 6X 10 PLATED	1							
61	2	119660-61901	RETAINER, SHAFT	1							
65	2	22190-120000	SEAL WASHER 12(BOLT)	1							
67	2	23887-120002	PLUG M12,HEX.	1							
69	2	26106-060102	BOLT 6X 10 PLATED	1							
70	2	26756-060002	LOCK NUT 6	1							
84	2	158552-61900	O-RING	1							
85	2	24341-000360	O-RING 1A S-36.0	1							
86	2	26106-060102	BOLT 6X 10 PLATED	3							
87	2	26106-060142	BOLT M 6X 14 PLATED	2							
88	2	26106-060202	BOLT M 6X 20 PLATED	10							
99	2	119653-77950	SOLENOID, STOP	1							
133	2	158552-61081	WIRE BRACKET	1							
134	2	124756-67510	RETAINER, WIRE	1							
135	2	22272-000070	CIRCLIP E- 7	1							
136	2	26106-060142	BOLT M 6X 14 PLATED	2							



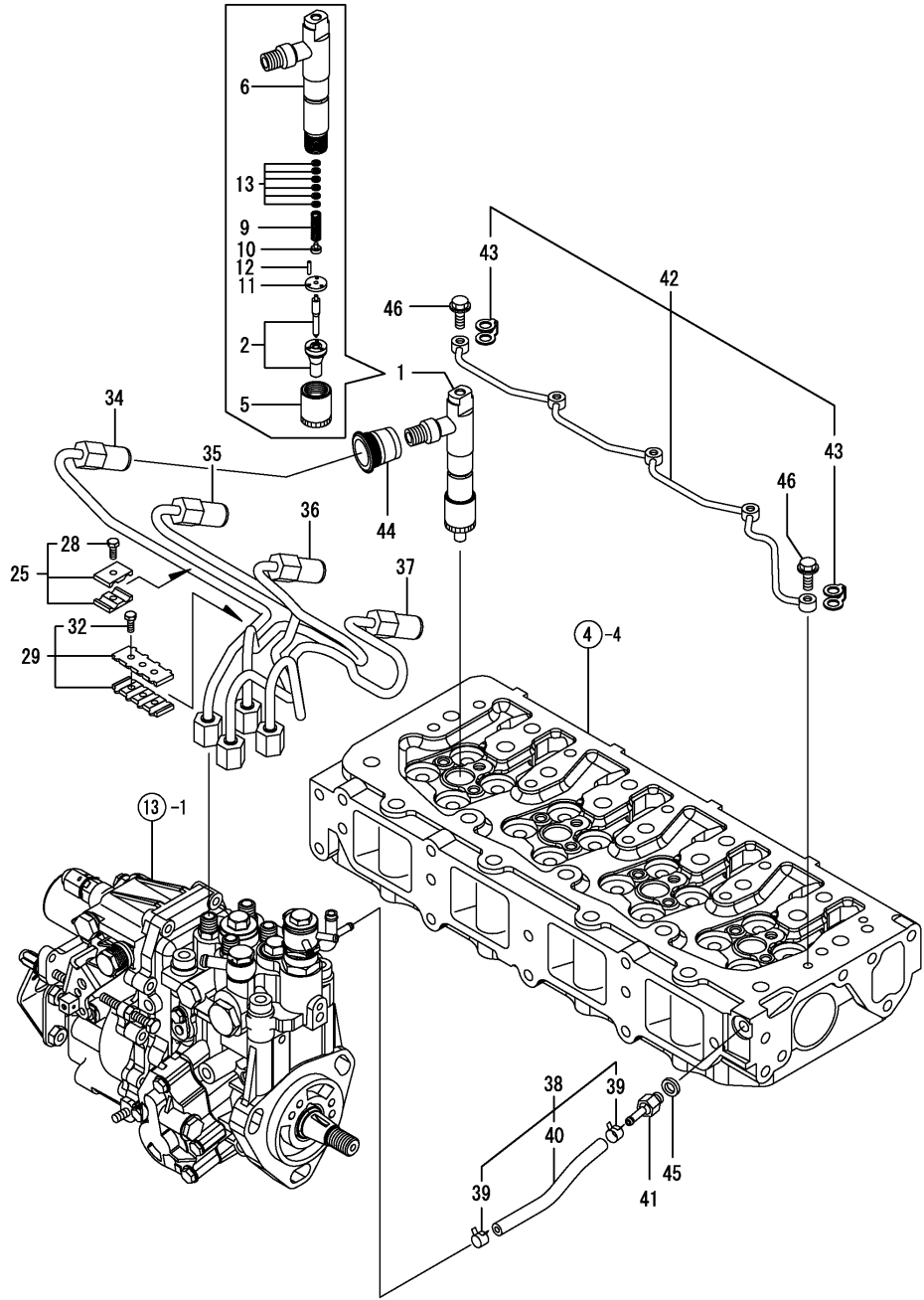
Remarks

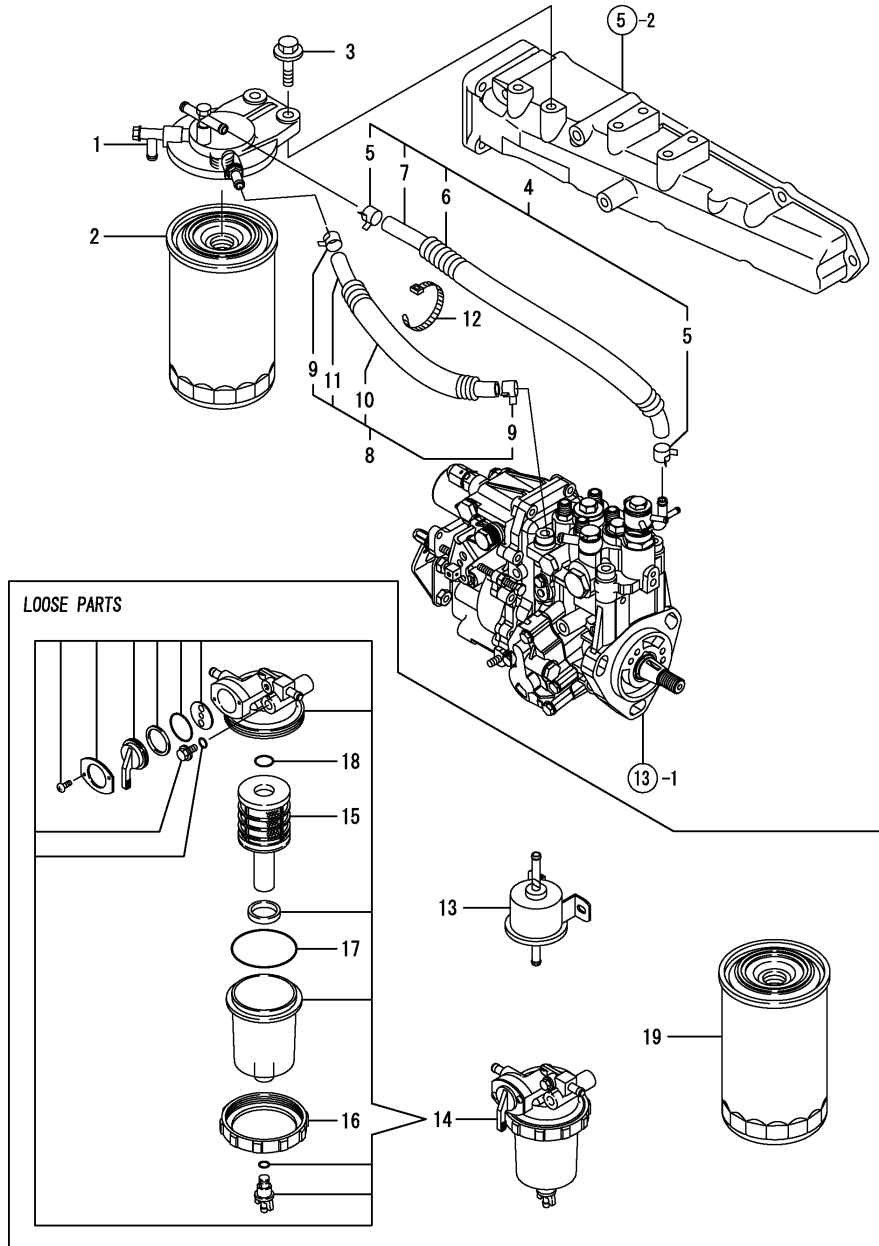
* THIS FIGURE(GOVERNOR ASSY)IS
INCORPORATED IN THE FUEL INJECTION
PUMP ASSY(FIG.13).

(A)=4TNV84T-XSU
(B)=
(C)=

(D)=
(E)=
(F)=

REF.	LEV.	PARTS NO.	DESCRIPTION	Q'TY						I	R
				(A)	(B)	(C)	(D)	(E)	(F)		
1	1	729648-53100	FUEL INJECTOR(VBT	4							
2	2	129508-53000	NOZZLE ASSY	4							
5	2	114250-53080	NUT, NOZZLE CASE	4							
6	2	129508-53100	HOLDER ASSY, NOZZLE	4							
9	2	114250-53120	SPRING, NOZZLE	4							
10	2	114250-53130	SEAT, NOZZLE SPRING	4							
11	2	114250-53140	PLATE, STOP	4							
12	2	114250-53210	PIN	8							
13	2	114250-53400	SHIM PACK	4							
25	1	119305-59120	RETAINER	2							
28	2	129150-59131	BOLT M4X14,HEX.SCKT.	2							
29	1	129550-59120	RETAINER	1							
32	2	129150-59131	BOLT M4X14,HEX.SCKT.	2							
34	1	129508-59910	PIPE ASSY, INJECTION	1							
35	1	129508-59920	PIPE ASSY, INJECTION	1							
36	1	129508-59930	PIPE ASSY, INJECTION	1							
37	1	129508-59940	PIPE ASSY, INJECTION	1							
38	1	129508-59570	PIPE ASSY, RETURN	1							
39	2	124722-59050	CLAMP 9	2							
40	2	129508-59510	PIPE, FUEL RETURN	1							
41	1	123907-59560	HOSE JOINT 4	1							
42	1	129508-59550	PIPE ASSY,F.O.RETURN	1							
43	2	123907-59550	PACKING,FUEL RETURN	5							
44	1	123907-11601	PIPE SEAL	4							
45	1	22190-080002	SEAL WASHER 8S	1							
46	1	123907-59540	JOINT BOLT M6	5							





(A)=4TNV84T-XSU

$$(B)=$$
$$(C)=$$

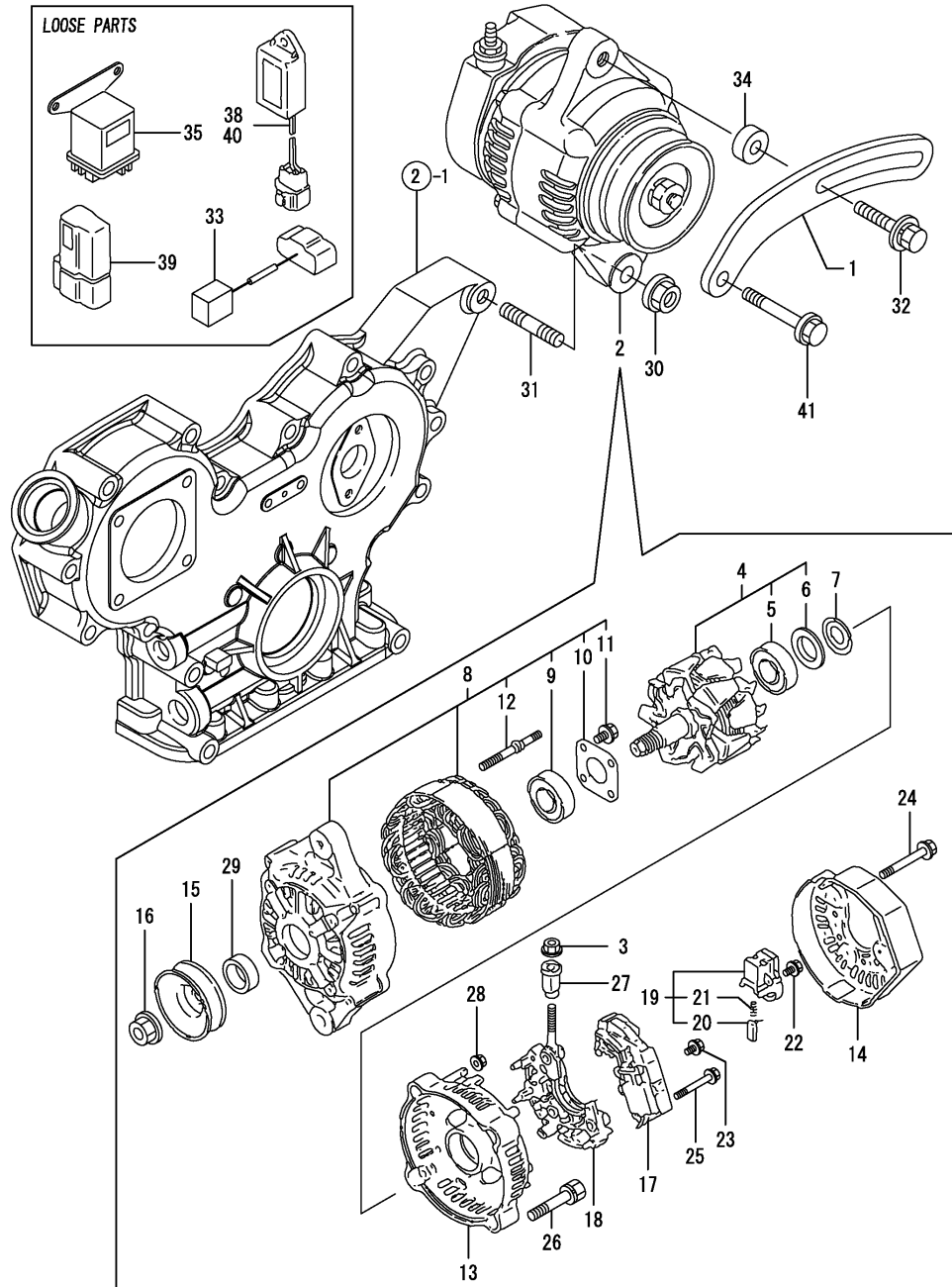
(D)=

$$(E)=$$
$$(F)=$$

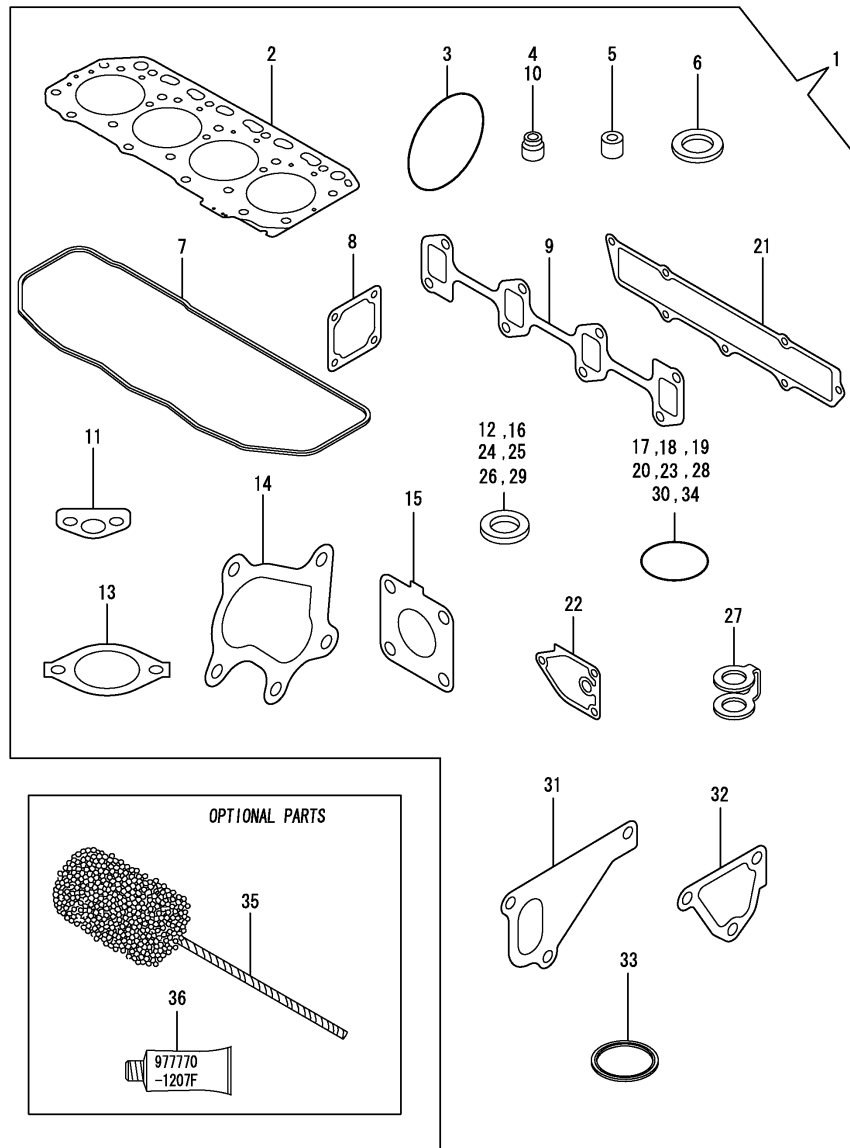
REF.	LEV.	PARTS NO.	DESCRIPTION	QTY					I	R
				(A)	(B)	(C)	(D)	(E)		
1	1	129004-55612	BRACKET,FUEL FILTER	1						
2	1	129907-55800	FILTER, FUEL OIL	1						
3	1	26106-080302	BOLT M 8X 30 PLATED	2						
4	1	129981-59010	PIPE ASSY, FUEL	1						
5	2	124766-59050	CLAMP 12	2						
6	2	129950-59221	TUBE	1						
7	2	129980-59510	PIPE, FUEL OIL	1						
8	1	129950-59311	PIPE, FUEL	1						
9	2	124766-59050	CLAMP 12	2						
10	2	129961-59110	TUBE	1						
11	2	105025-59580	PIPE, FUEL OIL	1						
12	1	121750-59890	CLAMP 140	1						
13	1	119225-52102	PUMP ASSY, FUEL FEED	1						
14	1	119802-55700	SEPARATOR ASSY	1						
15	2	119802-55710	ELEMENT	1						
16	2	129100-55690	RING, RETAINING	1						
17	2	24321-000650	O-RING 1A G-65.0	1						
18	2	24311-000160	O-RING 1A P-16.0	1						
19	1	129907-55800	FILTER, FUEL OIL	1						

REF.	LEV.	PARTS NO.	DESCRIPTION	Q'TY						I	R
				(A)	(B)	(C)	(D)	(E)	(F)		
1	1	129136-77011	STARTER	1							
2	2	129136-77310	SHAFT, PINION	1							
3	2	129900-77400	ARMATURE ASSY	1							
4	3	X2130350900	BALL BEARING	1							
5	3	X2114255110	BALL BEARING	1							
6	2	129900-77440	COIL ASSY, FIELD	1							
7	3	129900-77450	BRUSH (+)	2							
8	3	171008-77450	SCREW, POLE CORE SET	4							
9	2	129900-77460	COVER, REAR	1							
10	2	129900-77480	HOLDER ASSY, BRASH	1							
11	3	129900-77450	BRUSH (+)	2							
12	3	129400-77490	SPRING, BRUSH	4							
13	2	171008-77510	HOUSING ASSY, GEAR	1							
14	2	129136-77520	CENTER HOUSING	1							
15	2	171008-77540	LEVER SET, SHIFT	1							
18	2	129400-77571	DUST COVER,(NON-ASB.	1							
19	2	129900-77640	BOLT, THROUGH	2							
20	2	171008-77650	PINION ASSY	1							
21	3	X2114555500	CLUTCH ASSY	1							
22	4	X2114955020	BALL BEARING	1							
23	4	X2240410100	BALL BEARING	1							
24	3	171008-77660	SHAFT, PINION	1							
25	3	171008-77670	STOPPER SET, PINION	1							
29	2	26106-060322	BOLT M 6X 32 PLATED	2							
30	2	26106-060402	BOLT M 6X 40 PLATED	3							
31	2	171008-77750	COVER, M TERMINAL	1							
32	1	26116-120252	BOLT M12X 25 PLATED	2							

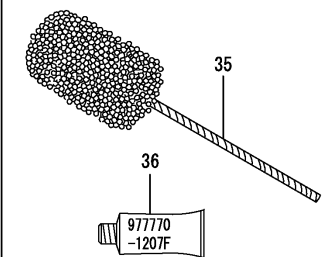
REF.	LEV.	PARTS NO.	DESCRIPTION	(A)	(B)	(C)	(D)	(E)	(F)	I	R
1	1	119802-77330	ADJUSTER, BELT	1							
2	1	129423-77200	GENERATOR	1							
3	2	X9490561001	NUT	1							
4	2	119620-77380	ROTOR ASSY	1							
5	3	119620-79240	BALL BEARING	1							
6	3	119620-79250	COVER, BEARING	1							
7	2	119620-79360	THRUST WASHER	1							
8	2	119620-77421	FLAME ASSY, DRIVE	1							
9	3	119620-79200	BALL BEARING	1							
10	3	119620-79210	PLATE	1							
11	3	119620-79220	SCREW	4							
12	3	119620-79230	BOLT, STUD	2							
13	2	119620-77440	FLAME ASSY, REAR	1							
14	2	129240-79300	COVER	1							
15	2	119620-77461	PULLEY	1							
16	2	119620-77471	NUT	1							
17	2	129423-77710	REGULATOR ASSY	1							
18	2	119620-79260	HOLDER	1							
19	2	119620-79270	HOLDER, BRUSH	1							
20	3	119620-77480	BRUSH ASSY	2							
21	3	119620-79280	SPRING	2							
22	2	119620-79290	SCREW	6							
23	2	119620-79300	SCREW	1							
24	2	119620-79310	BOLT	3							
25	2	119620-79320	SCREW W/WASHER	2							
26	2	119620-79330	BOLT	2							
27	2	119620-79340	INSULATION BUSH	1							
28	2	119620-79350	NUT	2							
29	2	119620-77490	COLLAR	1							
30	1	26306-100002	NUT	1							
31	1	129795-01900	STUD	1							
32	1	129972-77341	BOLT, ADJUSTING	1							
33	1	129457-77511	CONNECTOR	1							
34	1	119940-77270	ADJUSTER, BELT	1							
35	1	119650-77910	RELAY, GROW	1							
38	1	129211-77920	TIMER	1							
39	1	119643-66900	DIODE	1							
40	1	128300-77920	TIMER	1							
41	1	26106-080452	BOLT M 8X 45 PLATED	1							



REF.	LEV.	PARTS NO.	DESCRIPTION	(A)	(B)	(C)	(D)	(E)	(F)	I	R
1	1	729508-92710	GASKET SET(NON-ASB.)	1							1
2	2	129508-01330	GASKET, HEAD	1							
3	2	121850-51960	O-RING, F.I.PUMP	1							
4	2	119717-11340	SEAL, VALVE STEM	8							
5	2	119802-11870	PROTECTOR, NOZZLE	4							
6	2	119625-11880	SEAT, NOZZLE	4							
7	2	129508-11310	PK,BONNET	1							
8	2	129150-77511	GASKET, (NON-ASB.)	1							
9	2	129550-13110	GASKET, EXH.MANIFOLD	1							
10	2	119717-11350	SEAL, VALVE STEM	8							
11	2	129150-35042	GASKET, (NON-ASB.)	1							
12	2	124465-44950	GASKET 16	2							
13	2	129795-49551	GASKET, (NON-ASB.)	1							
14	2	129508-18090	GASKET, TURBOCHARGER	1							
15	2	129508-18080	GASKET	1							
16	2	22190-080002	SEAL WASHER 8S	3							
17	2	24311-000120	O-RING 1A P 12.0	3							
18	2	24311-000320	O-RING 1A P-32.0	2							
19	2	24341-000240	O-RING 1A S-24.0	1							
20	2	24316-000160	O-RING 4D P-16.0	1							
21	2	129508-12110	GASKET, MAFIFOLD	1							
22	2	129150-35111	GASKET, (NON-ASB.)	1							
23	2	119609-32040	O-RING P16	4							
24	2	22190-100002	SEAL WASHER 10S	2							
25	2	23414-080000	GASKET 8, ROUND	1							
26	2	22190-220002	SEAL WASHER 22S	1							
27	2	123907-59550	PACKING,FUEL RETURN	5							
28	2	24341-000400	O-RING 1A S-40.0	1							
29	2	23414-100000	GASKET 10, ROUND	2							
30	2	129486-42140	O-RING,CW-P	1							
31	2	129486-42021	GASKET	1							
32	2	124395-49840	GASKET, THERMO. CASE	1							
33	2	129150-49811	GASKET, (NON-ASB.)	1							
34	2	24311-240100	O-RING 1A P-10A	1							
35	1	129400-92420	FLEX HORN	1							1
36	1	977770-1207F	GASKET,LIQUID	1							1



OPTIONAL PARTS



Remarks

(1)OPTIONAL PARTS.

N:Old New, Q:Old New, R:Old New, S:Old New, W:Add, Z:Discontinued, F:Interchangeable by set, K:Q'ty Change

(C)Copy Rights YANMAR CO.,LTD.

Part Number Index

All parts are stipulated in the order of part numbers.

(Depending on the area in which the part is used.)

This index will display the location of the part according to each part number.

PARTS No. INDEX

PARTS No.	Fig.	Ref.No.
105025-59580	16	11
114250-39450	10	38
114250-53080	15	5
114250-53120	15	9
114250-53130	15	10
114250-53140	15	11
114250-53210	15	12
114250-53400	15	13
119005-12511	5	15
119005-12571	5	13
		18
119131-18320	6	3
119140-12680	5	19
119225-52102	16	13
119260-34810	10	2
119305-59120	15	25
119609-32040	2	17
	19	23
119620-01750	3	3
119620-77380	18	4
119620-77421	18	8
119620-77440	18	13
119620-77461	18	15
119620-77471	18	16
119620-77480	18	20
119620-77490	18	29
119620-79200	18	9
119620-79210	18	10
119620-79220	18	11
119620-79230	18	12
119620-79240	18	5
119620-79250	18	6
119620-79260	18	18
119620-79270	18	19
119620-79280	18	21
119620-79290	18	22
119620-79300	18	23
119620-79310	18	24
119620-79320	18	25
119620-79330	18	26
119620-79340	18	27
119620-79350	18	28
119620-79360	18	7
119625-11880	4	27
	19	6
119640-01640	3	9
119643-66900	18	39
119650-77910	18	35
119653-77950	14	99
119660-61901	14	61

PARTS No.	Fig.	Ref.No.
119717-11190	4	24
119717-11340	4	18
	19	4
119717-11350	4	19
	19	10
119717-11800	4	11
119802-01520	2	12
119802-01561	2	13
119802-03070	4	51
119802-11870	4	46
	19	5
119802-13650	6	4
119802-13670	6	5
119802-13820	6	6 -1
119802-21202	9	5
119802-21660	9	9
119802-25051	7	9
119802-25070	7	13
119802-25100	7	10
119802-25901	7	15
119802-32070	2	8
119802-32100	2	7
119802-32130	2	20
119802-34850	10	5
119802-35110	10	9
119802-39500	11	10
119802-49113	12	10
119802-49730	12	32
119802-51090	13	87
119802-51560	13	50
119802-51590	13	56
119802-51600	13	57
119802-51680	13	61
119802-51690	13	62
119802-55700	16	14
119802-55710	16	15
119802-77330	18	1
119807-61420	14	22
119808-12540	5	17
119865-21600	9	16
119934-01800	2	6
119940-59130	10	26
119940-77270	18	34
121023-01551	2	28
121111-21501	9	12
121252-39150	11	8
121450-42450	12	41
121550-23200	9	30
121750-59890	16	12
121850-21680	9	11

PARTS No.	Fig.	Ref.No.
121850-42410	12	8
121850-51960	2	21
	19	3
123901-39820	11	14
123907-11550	4	3
123907-11601	15	44
123907-11830	4	23
123907-59540	15	46
123907-59550	15	43
	19	27
123907-59560	15	41
124060-01050	1	10
124070-13300	11	12
124160-01751	2	14
	4	48
124160-01910	1	5
		15
124160-11360	4	59
124160-39140	11	1
124223-39900	11	11
124240-01871	2	15
124395-49840	12	17
	19	32
124465-44950	12	40
	19	12
124722-59050	12	33
		36
	15	39
124756-67510	14	134
124766-59050	16	5
		9
128300-77920	18	40
129001-01250	1	11
129001-02930	1	25
129001-32330	2	11
129001-91841	2	22
129004-01190	1	33
129004-22500	9	19
129004-22950	9	35
129004-42040	12	15
129004-49610	12	30
129004-49620	12	34
129004-49711	12	31
129004-49721	12	35
129004-55612	16	1
129005-59830	11	4
129006-03120	4	53
129006-35100	10	8
129006-44480	10	14
129009-51390	13	36

PARTS No.	Fig.	Ref.No.
129044-61060	14	1
129100-01580	3	1
		15
	9	2
129100-23910	9	29
129100-42051	12	3
129100-42121	12	4
129100-55690	16	16
129103-49301	10	15
129120-77501	5	9
129136-77011	17	1
129136-77310	17	2
129136-77520	17	14
129150-01200	1	31
129150-02020	1	7
129150-02450	7	4
129150-02870	1	34
129150-02930	1	28
129150-02940	1	37
129150-03070	4	52
129150-03090	4	64
129150-11230	4	36
		40
129150-11750	4	22
		37
		41
129150-14101	7	7
129150-14200	7	1
129150-14400	7	2
129150-23600	9	31
129150-23610	9	39
129150-25301	7	16
129150-35042	10	3
	19	11
129150-35111	10	12
	19	22
129150-35153	10	13
		39
129150-49811	12	25
	19	33
129150-59131	15	28
		32
129150-77511	5	10
	19	8
129155-42350	12	20
129155-49801	12	24
129155-51280	14	5
129155-61460	14	24
129202-22300	9	23
129211-77920	18	38

PARTS No. INDEX

PARTS No.	Fig.	Ref.No.
129240-79300	18	14
129255-61410	14	21
129350-49530	12	26
129400-01730	3	6
129400-77490	17	12
129400-77571	17	18
129400-92420	19	35
129403-13120	6	2
129417-33110	10	19
129417-35150	10	10
129418-18320	8	2
129418-32320	2	10
129423-77200	18	2
129423-77710	18	17
129436-01780	3	8
129436-35070	10	4 -1
129436-35091	10	4
129457-12530	5	16
129457-77511	18	33
129486-01670	3	19
129486-42021	12	14
	19	31
129486-42140	12	16
	19	30
129489-21590	9	13
129508-01330	1	32
	19	2
129508-03010	4	50
129508-11100	4	25
129508-11110	4	15
129508-11130	4	16
129508-11180	4	17
129508-11241	4	28
129508-11250	4	29
129508-11260	4	31
129508-11270	4	32
129508-11280	4	33
129508-11310	4	56
	19	7
129508-11350	4	49
129508-11650	4	34
129508-11660	4	38
129508-11700	4	4
129508-11820	4	12
129508-11900	4	62
129508-11920	4	42
129508-12060	5	1
129508-12100	5	2
129508-12110	5	4
	19	21

PARTS No.	Fig.	Ref.No.
129508-14580	7	3
129508-18010	8	4
129508-18080	8	1
	19	15
129508-18090	6	9
	19	14
129508-21002	9	1
129508-22080	9	17
129508-22900	9	33
129508-32111	2	18
129508-32120	2	19
129508-33010	10	17
129508-33050	10	18
129508-39450	11	9
129508-39600	11	13
129508-42001	12	1
129508-49030	10	20
129508-49040	10	24
129508-51250	13	132
129508-53000	15	2
129508-53100	15	6
129508-59510	15	40
129508-59550	15	42
129508-59570	15	38
129508-59910	15	34
129508-59920	15	35
129508-59930	15	36
129508-59940	15	37
129550-13110	6	1
	19	9
129550-59120	15	29
129553-39650	10	36
129601-12610	5	14
129601-34801	10	1
129612-01600	3	2
129648-01600	3	16
129648-01780	3	18
129648-13520	6	7
129648-13570	6	8
129648-44700	12	22
129672-11510	4	20
129693-44310	6	6
129792-39410	10	30
129795-01900	18	31
129795-01950	2	16
129795-02411	1	14
129795-21661	9	10
129795-49551	12	27
	19	13
129900-07900	4	1

PARTS No.	Fig.	Ref.No.
129900-32130	2	9
129900-77400	17	3
129900-77440	17	6
129900-77450	17	7
		11
129900-77460	17	9
129900-77480	17	10
129900-77640	17	19
129906-12520	5	12
129907-11950	4	47
129907-55800	16	2
		19
129916-49740	12	13
129916-59020	13	128
129950-59221	16	6
129950-59311	16	8
129961-59110	16	10
129972-77341	18	32
129980-59510	16	7
129981-59010	16	4
158552-51151	7	18
158552-51570	13	51
		52
158552-51580	13	55
158552-51600	13	65
158552-51670	13	4
158552-51780	13	121
158552-51781	13	121 -1
158552-52100	13	77
158552-52310	13	79
158552-52400	13	91
158552-52500	13	78
158552-61081	14	133
158552-61441	14	23
158552-61900	14	84
158553-51551	13	48
158553-51630	13	66
158553-51640	13	68
158553-51660	13	70
158553-51670	13	60
158553-51680	13	71
158553-51770	13	95
158553-61050	14	3
158557-51570	13	53
158563-51281	13	34
		35
158563-51330	13	44
158600-51270	13	33
158601-51550	13	49
158601-51570	13	54

PARTS No.	Fig.	Ref.No.
158601-51650	13	69
158601-51770	13	120
158601-51790	13	122
171008-03990	10	21
171008-77450	17	8
171008-77510	17	13
171008-77540	17	15
171008-77650	17	20
171008-77660	17	24
171008-77670	17	25
171008-77750	17	31
171051-01921	1	6
171056-49120	10	29
171353-44760	12	37
729402-23100	9	25
729508-01560	1	1
729508-92710	19	1
729533-01500	2	1
729648-51350	13	1
729648-53100	15	1
977770-1207F	2	31
	3	21
	4	65
	19	36
X2114255110	17	5
X2114555500	17	21
X2114955020	17	22
X2130350900	17	4
X2240410100	17	23
X9490561001	18	3



YANMAR CO.,LTD.