



PARTS CATALOG



Directions for the Parts Catalog.

1. The parts stipulated in this Parts Catalog are not necessarily standard equipped parts.
2. Parts may change without prior notice.
3. The following is an example of the Parts Catalog format.

REF.	LEV.	PARTS NO.	DESCRIPTION	Q'TY						I	R
				(A)	(B)	(C)	(D)	(E)	(F)		
1	1	729595-51390	FUEL INJECTION PUMP	1	1	1	1	1			1
1-1	1	729595-51391	FUEL INJECTION PUMP	1	1	1	1	1		N	1
		(A=E00185) (B=E00200)									
3	2	26022-060162	SCREW M 6X 16	9	9	9	9	9			
3-1	2	26022-060162	SCREW M 6X 16	4	4	4	4	4		K	
		(A=E00156) (B=E00156) (C=E00156) (D=E00156) (E=E00156)									
4	2	129470-51040	CAMSHAFT	1	1	1	1	1			
5	2	122710-51050	BEARING, ROLLER	2	2	2	2	2			
6	2	129470-51060	RETAINER	1	1	1	1	1			

Remarks
(1) BOOST COMPEMSATOR TYPE. OPTIONAL PART, TO E00155,(4JH-DT, 4JH-DTZ

① Ref. No.

The Ref. No. listed may not be in accordance with the illustration Ref. No.

(Ex.) Illustration No. 1 List Ref No. 1 (Before change) → 1-1 (After change)

For interchangeable symbols N, R and K, illustrations for new parts may be abbreviated.

② Lev. (Level)

Level indication

The numbers below indicate the level of relativity towards the main part.

1 ----- Main parts (Assembly parts)

2 ----- Sub component included in " 1 ".

3 ----- Sub component included in " 2 ".

Note) Parts that are not for sale are partially illustrated but not listed.

③ Interchangeability Mark

When a part change takes place, one of the following interchangeability symbols is indicated beside the part.

Symbol	Interchangeability	Contents note
N	Old $\begin{matrix} \leftarrow \text{Yes} \\ \text{No} \rightarrow \end{matrix}$ New	New Part is interchangeable for Old Part but Old Part is not interchangeable for New Part.
Q	Old $\begin{matrix} \leftarrow \text{No} \\ \text{Yes} \rightarrow \end{matrix}$ New	New Part is not interchangeable for Old Part but Old Part is interchangeable for New Part.
R	Old $\begin{matrix} \leftarrow \text{Yes} \\ \text{Yes} \rightarrow \end{matrix}$ New	New/ Old Parts are both interchangeable.
S	Old $\begin{matrix} \leftarrow \text{No} \\ \text{No} \rightarrow \end{matrix}$ New	New/ Old Parts are both not interchangeable.
W		Part discontinued.
Z		Part newly added.
F		Not interchangeable by a single part but interchangeable together with related parts.
K		Changes only for used parts quantities.

④ Effective Machine No.

When a part changes, the effective Machine No. will be indicated in the (A)-(F) column.

Product Symbol	Product No.	Product Symbol	Product No.
C	Clutch No. Compressor No.	F	Machine No. (Agricultural Equip.)
D	Drive No.	M	Machine No.
E	Engine No.	Note 1)	Date

Note 1) A date may follow the symbol. (Ex.) 1996.01

Note 2) " XXX " are for parts that could not be predicted or for engine models that could not be identified.

Note 3) (A=E00185) is the E (Engine Serial Number) for the column (A) model (in this case 4JH-DT) after the parts design change.

⑤ Remarks Mark

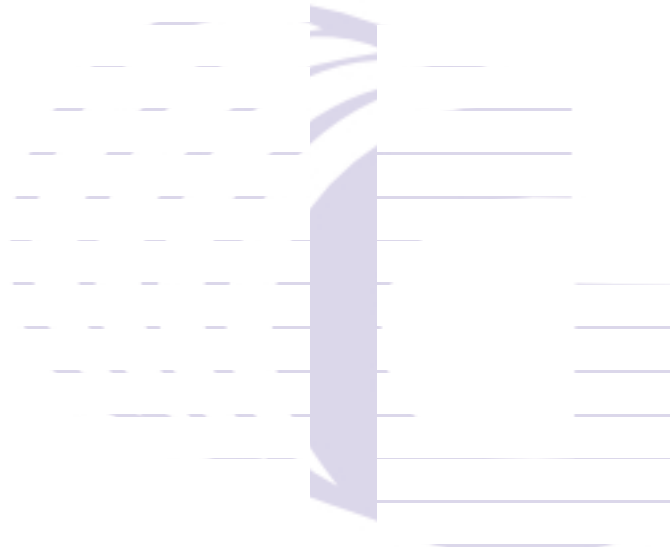
Figures or alphabets (symbols) are entered in the remarks column.

The comments (remarks) on parts that are indicated at the bottom of the illustration are the same symbols as those stated above.

Fig.No. GROUP NAME
ENGINE SECTION

1. CYLINDER BLOCK
2. GEAR HOUSING
3. OIL SUMP
4. CYLINDER HEAD & BONNET
5. SUCTION & EXHAUST MANIFOLD
6. CAMSHAFT & DRIVING GEAR
7. CRANKSHAFT & PISTON
8. BALANCER
9. LUB.OIL SYSTEM
10. COOLING WATER SYSTEM
11. FUEL INJECTION PUMP
12. GOVERNOR
13. FUEL INJECTION VALVE
14. STARTING MOTOR

Fig.No. GROUP NAME



(A)=4TNE88-RBS

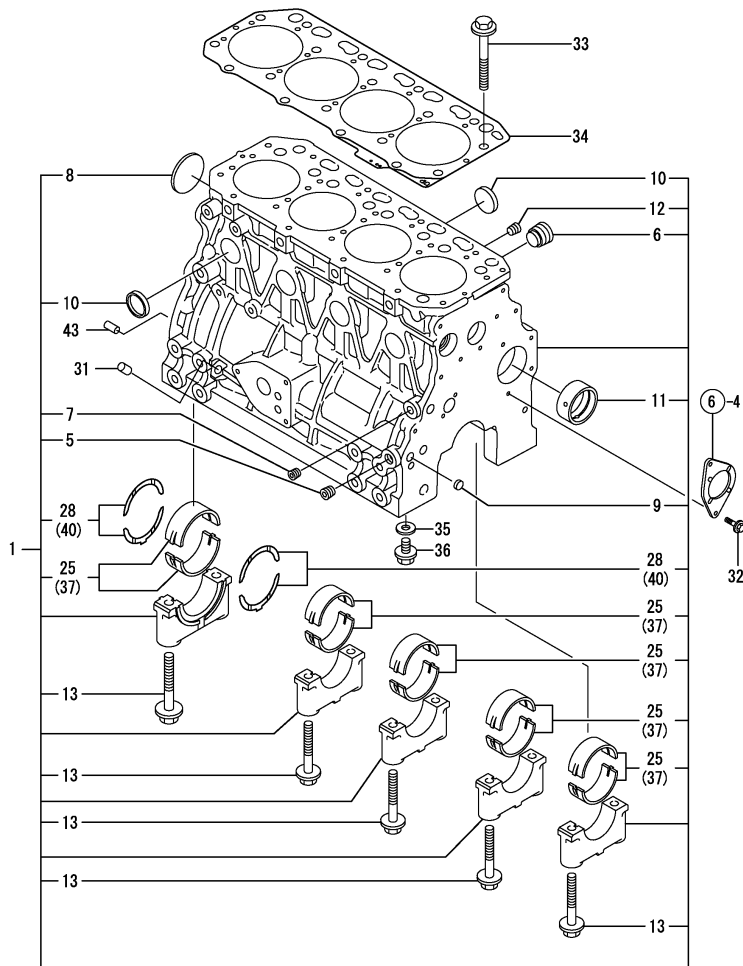
(B)=

(C)=

(D)=

(E)=

(F)=



REF.	LEV.	PARTS NO.	DESCRIPTION	QTY						I	R
				(A)	(B)	(C)	(D)	(E)	(F)		
1	1	729457-01561	BLOCK ASSY, CYLINDER	1							
5	2	124160-01910	PLUG PT1/4	2							
6	2	171051-01921	PLUG	1							
7	2	23876-010000	PLUG PT1/8,SCREW	1							
8	2	129001-01250	PLUG 50	1							
9	2	27241-120000	PLUG 12	2							
10	2	27241-300000	PLUG 30	8							
11	2	129795-02411	BUSH, CAMSHAFT	1							
12	2	23876-030000	PLUG PT3/8,SCREW	1							
13	2	129150-02020	BOLT, METAL CAP	10							
25	2	129001-02930	MAIN BEARING SET	5							3
28	2	129150-02930	METAL, THRUST	2							
31	1	119309-01810	PLUG	1							
32	1	26106-080162	BOLT M 8X 16 PLATED	2							
33	1	129150-01200	STUD, CYL. HEAD	18							
34	1	129407-01340	GASKET,CYL.HEAD	1							
35	1	23414-080000	GASKET 8, ROUND	4							
36	1	26106-080122	BOLT M 8X 12 PLATED	4							
37	1	129150-02870	MAIN METAL US=0.25	5							1
40	1	129150-02940	METAL,THRUST.25(4PIE	1							2
43	1	129100-01580	PARALLEL PIN 8X16	2							

Remarks
 (1) UNDER-SIZE(U.S=0.25)PART.
 (2) OVER-SIZE(O.S=0.25)PART.
 (3) REPAIR PART.
 (REMARKS)"EFFECTIVE MACHINE NO." OF
 ENGINE IS INDICATED ON THE
 ENGINE LABEL WHICH IS SHOWN
 IN FIG.4.

(A)=4TNE88-RBS

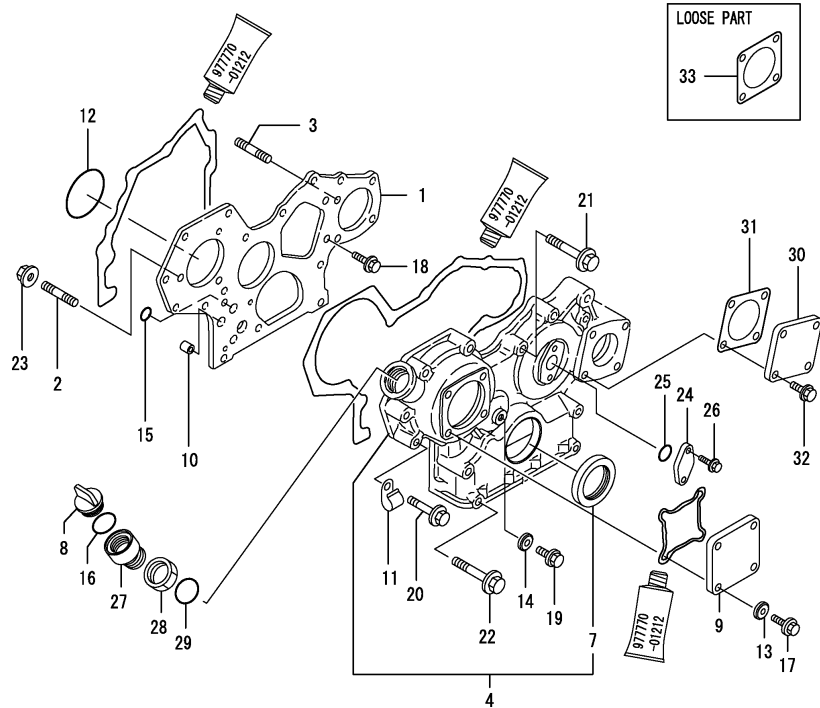
(B)=

(C)=

(D)=

(E)=

(F)=

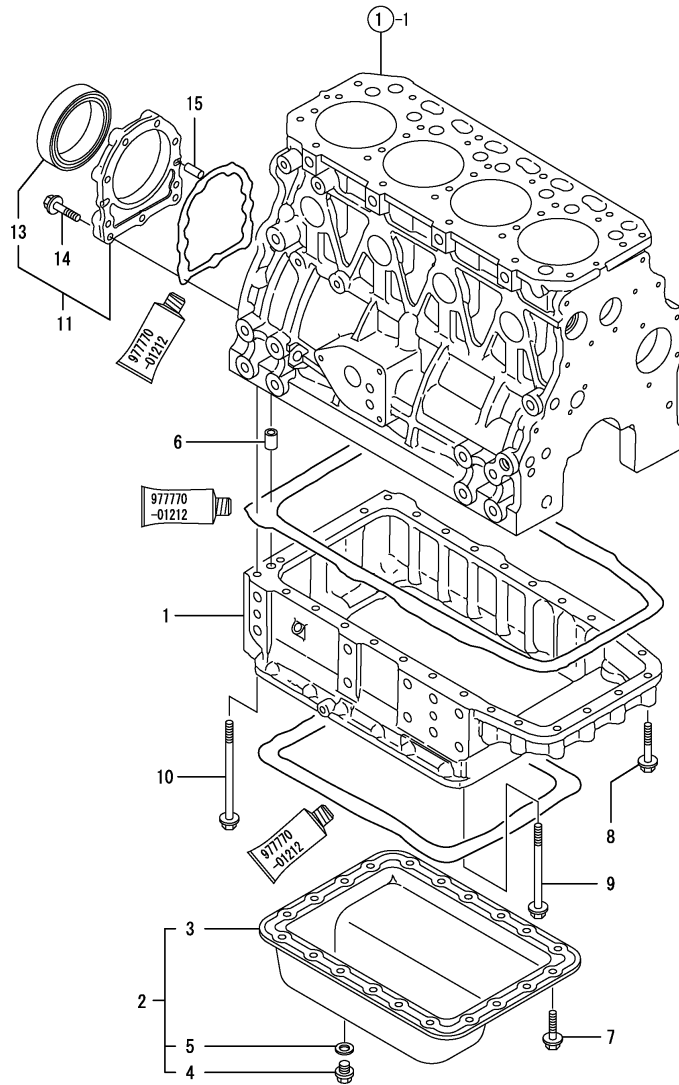


REF.	LEV.	PARTS NO.	DESCRIPTION	QTY						I	R
				(A)	(B)	(C)	(D)	(E)	(F)		
1	1	129100-01520	FLANGE,GEAR HOUSING	1							
2	1	121450-01560	STUD M 8X 22	3							
3	1	129150-01580	STUD 8 X 30	1							
4	1	129100-01590	HOUSING ASSY, GEAR	1							
7	2	129795-01800	SEAL, OIL	1							
8	1	124160-01751	COVER,FILLER	1							
9	1	124240-01871	COVER, HO-P	1							
10	1	129795-01950	PIPE, KNOCK L=18	2							
11	1	129150-03100	RETAINER	1							
12	1	121850-51960	O-RING, F.I.PUMP	1							
13	1	22190-080002	SEAL WASHER 8S	4							
14	1	22190-080002	SEAL WASHER 8S	1							
15	1	119609-32040	O-RING P16	2							
16	1	24311-000320	O-RING 1A P-32.0	1							
17	1	26106-080122	BOLT M 8X 12 PLATED	4							
18	1	26106-080162	BOLT M 8X 16 PLATED	3							
19	1	26106-080162	BOLT M 8X 16 PLATED	1							
20	1	26106-080452	BOLT M 8X 45 PLATED	6							
21	1	26106-080552	BOLT M 8X 55 PLATED	3							
22	1	129001-91841	BOLT M 8X 85 PLATED	4							
23	1	26306-080002	NUT	3							
24	1	121023-01550	COVER, BLIND	1							
25	1	24341-000240	O-RING 1A S-24.0	1							
26	1	26106-060162	BOLT M 6X 16 PLATED	2							
27	1	119225-11740	ADAPTOR, OIL FILLER	1							
28	1	119225-11750	NUT, OIL FILLER	1							
29	1	24311-000300	O-RING 1A P-30.0	1							
30	1	124240-01871	COVER, HO-P	1							
31	1	124240-01883	GASKET, (NON-ASB.)	1							
32	1	26106-080122	BOLT M 8X 12 PLATED	4							
33	1	129150-01881	GASKET, (NON ASB.)	1							

Remarks
 (REMARKS)"EFFECTIVE MACHINE NO." OF
 ENGINE IS INDICATED ON THE
 ENGINE LABEL WHICH IS SHOWN
 IN FIG.4.

(A)=4TNE88-RBS
(B)=
(C)=

(D)=
(E)=
(F)=



REF.	LEV.	PARTS NO.	DESCRIPTION	QTY						I	R
				(A)	(B)	(C)	(D)	(E)	(F)		
1	1	129550-01702	SUMP, OIL	1							
2	1	729429-01721	COVER ASSY, OIL PAN	1							
3	2	129429-01721	COVER(OILPAN)	1							
4	2	105425-01690	PLUG M16	1							
5	2	22190-160002	SEAL WASHER 16S	1							
6	1	129555-01750	PIPE, KNOCK	1							
7	1	26106-080122	BOLT M 8X 12 PLATED	20							
8	1	26106-080502	BOLT M 8X 50 PLATED	8							
9	1	129001-91870	BOLT M 8X100	14							
10	1	129001-91910	BOLT M 8X120	4							
11	1	129100-01640	CASE ASSY, OIL SEAL	1							
13	2	129795-01780	SEAL, OIL 129120.01780 retentor	1							
14	1	129486-01670	BOLT M8X30,COLLAR HD	9							
15	1	129100-01580	PARALLEL PIN 8X16	2							

Remarks
(REMARKS)"EFFECTIVE MACHINE NO." OF
ENGINE IS INDICATED ON THE
ENGINE LABEL WHICH IS SHOWN
IN FIG.4.

(A)=4TNE88-RBS

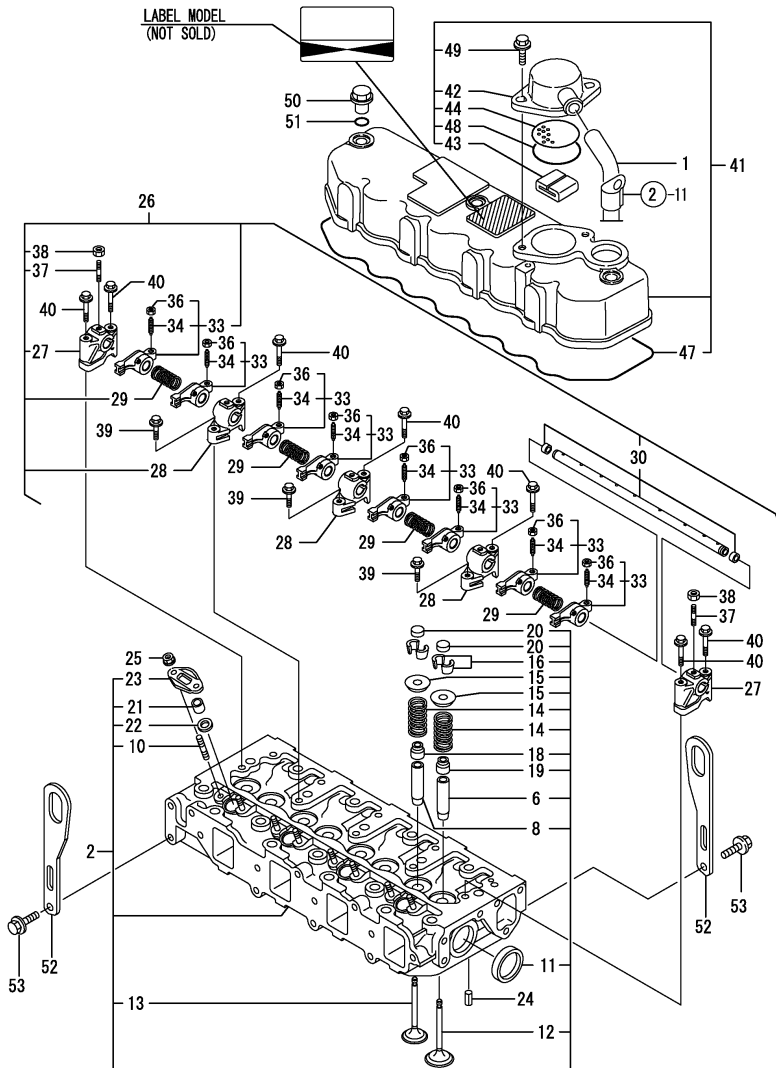
(B)=

(C)=

(D)=

(E)=

(F)=



REF.	LEV.	PARTS NO.	DESCRIPTION	QTY						I	R
				(A)	(B)	(C)	(D)	(E)	(F)		
1	1	129150-03090	PIPE	1							
2	1	129407-11700	HEAD ASSY, CYLINDER	1							
6	2	120130-11860	GUIDE, VALVE	4							1
8	2	129150-11810	GUIDE, VALVE	4							1
10	2	26216-060202	STUD M 6X 20 PLATED	8							
11	2	27241-400000	PLUG 40	2							
12	2	129100-11100	VALVE, INTAKE	4							
13	2	129100-11110	VALVE, EXHAUST	4							
14	2	129795-11120	SPRING, VALVE	8							
15	2	129795-11180	RETAINER, SPRING	8							
16	2	27310-080001	COTTER 8	8							
18	2	121400-11340	SEAL, VALVE STEM	4							
19	2	124460-11340	SEAL, VALVE STEM	4							
20	2	129150-11370	CAP, VALVE	8							
21	2	119625-11870	PROTECTOR, NOZZLE	4							
22	2	119625-11880	SEAT, NOZZLE	4							
23	2	119625-11900	RETAINER	4							
24	1	22351-060012	SPRING PIN 6X12	2							
25	1	26366-060002	NUT M 6	8							
26	1	129555-11241	SHAFT ASSY, ROCKER	1							
27	2	129155-11260	SUPPORT, ROCKER ARM	2							
28	2	129155-11270	SUPPORT, ROCKER ARM	3							
29	2	129150-11280	SPRING	4							
30	2	129550-11290	SHAFT, ROCKER ARM	1							
33	2	729402-11650	ARM ASSY, ROCKER	8							
34	3	129150-11230	SCREW, VALVE	8							
36	3	129150-11750	NUT M8XP1.0	8							
37	2	119802-11280	STUD	3							
38	2	26756-080002	LOCK NUT M 8 PLATED	3							
39	1	26106-080252	BOLT M 8X 25 PLATED	3							
40	1	26106-080502	BOLT M 8X 50 PLATED	7							
41	1	129486-11350	BONNET ASSY	1							
42	2	129150-03020	COVER, BREATHER	1							
43	2	129150-03070	BAFFLE, BREATHER	1							
44	2	129150-03080	PLATE, SHELTER	1							
47	2	129550-11310	GASKET, BONNET	1							
48	2	24341-000500	O-RING 1A S-50.0	1							
49	2	26106-080162	BOLT M 8X 16 PLATED	2							
50	1	124160-11360	KNOB	3							
51	1	24311-000120	O-RING 1A P 12.0	3							
52	1	124736-07900	LIFTER, ENGINE	2							
53	1	26106-080142	BOLT 8X 14 PLATED	4							

Remarks
 (1) REPAIR PART.
 (REMARKS)"EFFECTIVE MACHINE NO." OF
 ENGINE IS INDICATED ON THE
 ENGINE LABEL WHICH IS SHOWN
 IN FIG. 4.

(A)=4TNE88-RBS

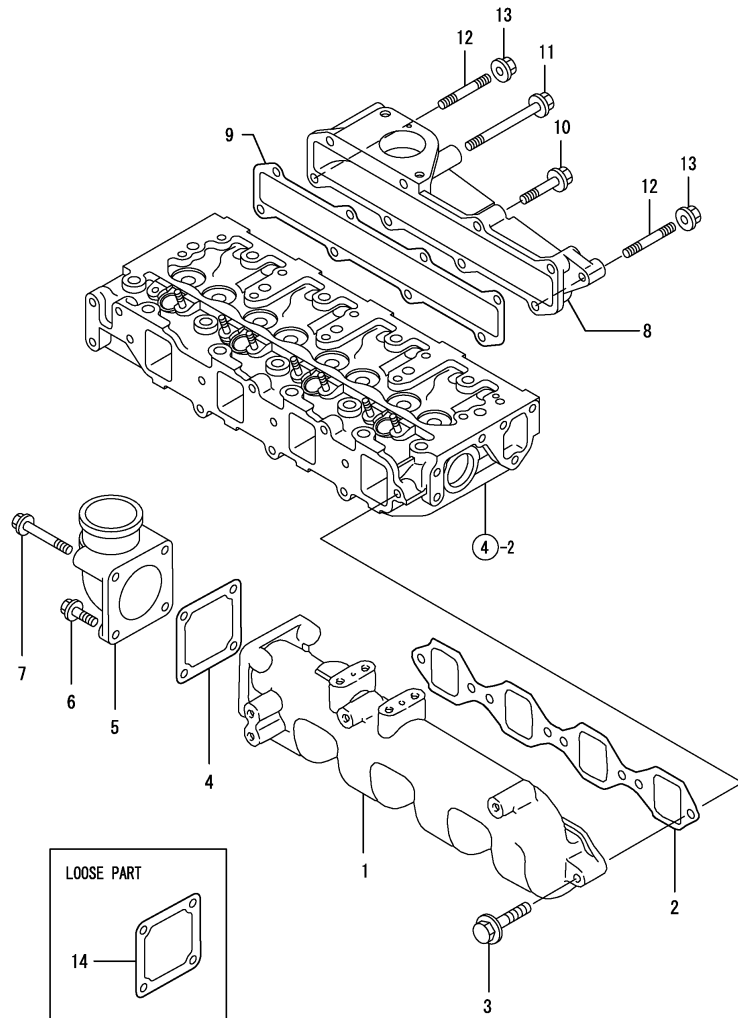
(B)=

(C)=

(D)=

(E)=

(F)=



REF.	LEV.	PARTS NO.	DESCRIPTION	QTY						I	R
				(A)	(B)	(C)	(D)	(E)	(F)		
1	1	129488-12100	MANIFOLD, AIR INTAKE	1							
2	1	129550-12112	GASKET, (NON-ASB.)	1							
3	1	26106-080352	BOLT M 8X 35 PLATED	5							
4	1	129150-77511	GASKET, (NON-ASB.)	1							
5	1	171340-77520	BEND	1							
6	1	26106-080252	BOLT M 8X 25 PLATED	2							
7	1	26106-080652	BOLT M 8X 65 PLATED	2							
8	1	129457-13100	MANIFOLD,EXHAUST	1							
9	1	129407-13110	GASKET,MAINFOLD	1							
10	1	119802-13600	BOLT M 8X 40 PLATED	5							
11	1	119802-13660	BOLT, M8X75	1							
12	1	119717-13600	STUD, M8X50	2							
13	1	26306-080002	NUT	2							
14	1	129150-77511	GASKET, (NON-ASB.)	1							

Remarks
 (REMARKS)"EFFECTIVE MACHINE NO." OF
 ENGINE IS INDICATED ON THE
 ENGINE LABEL WHICH IS SHOWN
 IN FIG.4.

(A)=4TNE88-RBS

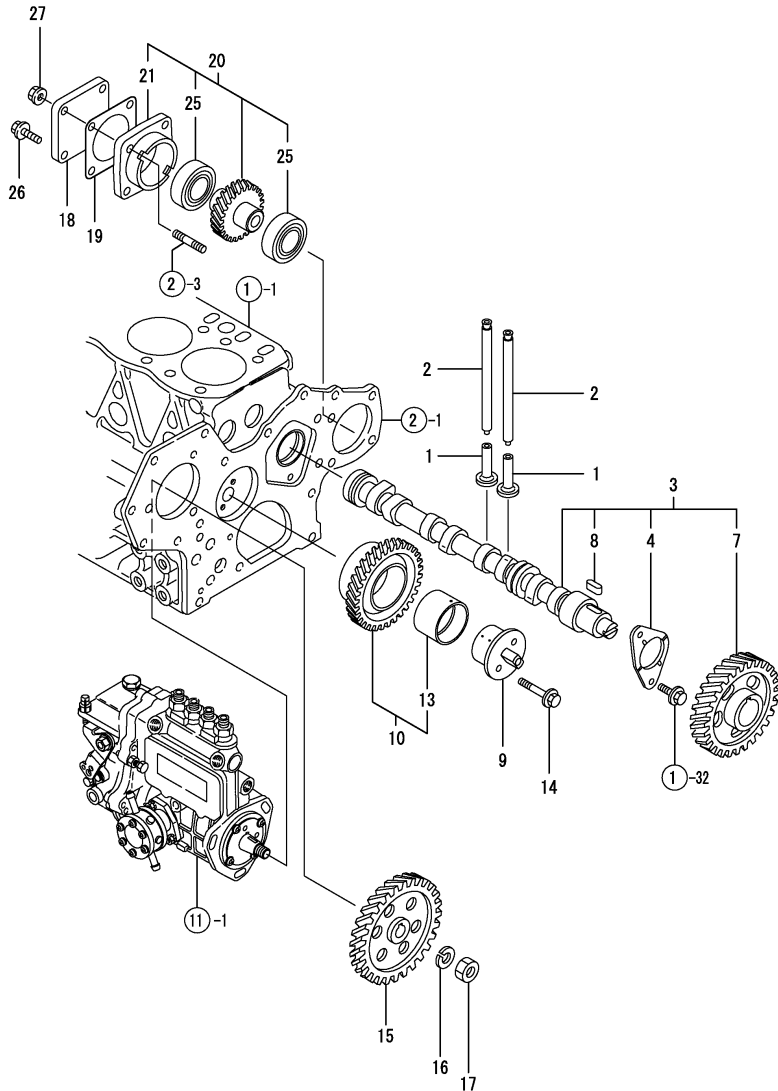
(B)=

(C)=

(D)=

(E)=

(F)=



REF.	LEV.	PARTS NO.	DESCRIPTION	QTY						I	R
				(A)	(B)	(C)	(D)	(E)	(F)		
1	1	129150-14200	TAPPET	8							
2	1	129150-14400	ROD, PUSH	8							
3	1	729402-14580	CAMSHAFT ASSY	1							
4	2	129150-02450	METAL, THRUST(CAM	1							
7	2	129150-14101	GEAR, CAMSHAFT	1							
8	2	22512-070140	KEY 7X 14	1							
9	1	129100-25061	SHAFT, IDLE GEAR	1							
10	1	129150-25101	GEAR W/BUSH	1							
13	2	129150-25920	BUSH, IDLE GEAR	1							1
14	1	26106-080452	BOLT M 8X 45 PLATED	2							
15	1	129150-25900	GEAR, FUEL INJ. PUMP	1							
16	1	22217-120000	SPRING WASHER 12	1							
17	1	26716-120002	NUT 12	1							
18	1	124240-01871	COVER, HO-P	1							
19	1	124240-01883	GASKET, (NON-ASB.)	1							
20	1	129555-26000	DRIVING SET, H. PUMP	1							
21	2	129150-26050	BRACKET, HO-P	1							
25	2	24105-060064	BALL BEARING	2							
26	1	26106-080252	BOLT M 8X 25 PLATED	3							
27	1	26306-080002	NUT	1							

Remarks
 (1) REPAIR PART.
 (REMARKS)"EFFECTIVE MACHINE NO." OF
 ENGINE IS INDICATED ON THE
 ENGINE LABEL WHICH IS SHOWN
 IN FIG.4.

(A)=4TNE88-RBS

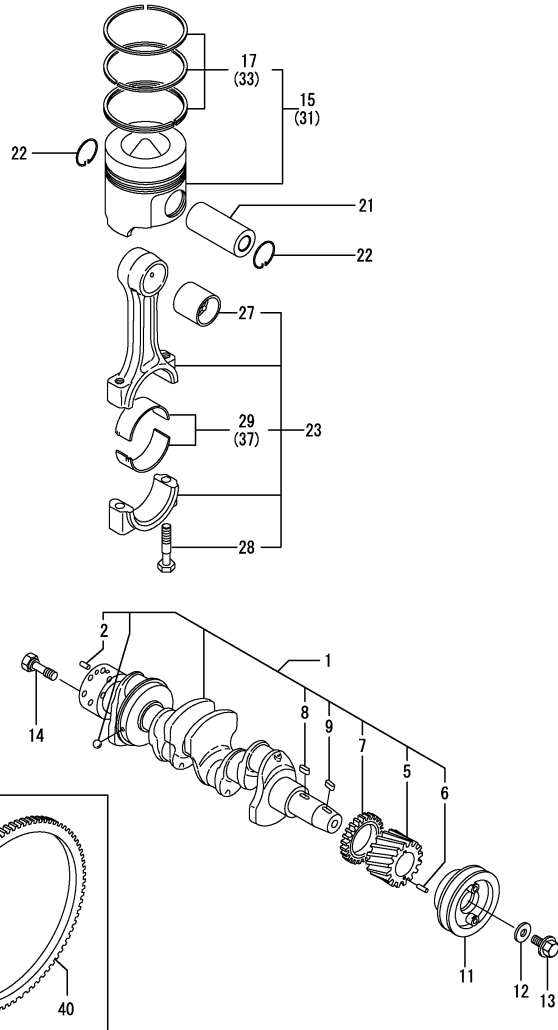
(B)=

(C)=

(D)=

(E)=

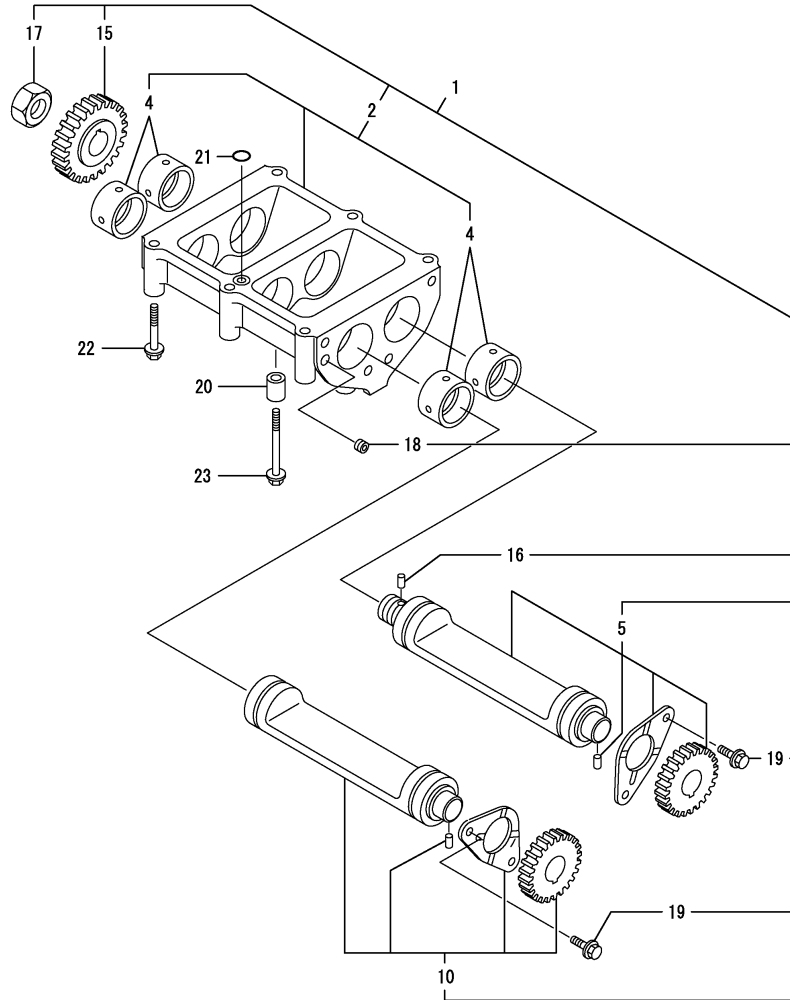
(F)=



REF.	LEV.	PARTS NO.	DESCRIPTION	Q'TY						I	R
				(A)	(B)	(C)	(D)	(E)	(F)		
1	1	729457-21700	CRANKSHAFT ASSY	1							
2	2	129100-01580	PARALLEL PIN 8X16	1							
5	2	129150-21200	GEAR, CRANKSHAFT	1							
6	2	121850-21290	PARALLEL PIN	1							
7	2	129400-28121	GEAR, BALANCER	1							
8	2	22512-070140	KEY 7X 14	1							
9	2	22512-070140	KEY 7X 14	1							
11	1	129550-21650	V-PULLEY, CRANKSHAFT	1							
12	1	129795-21661	WASHER	1							
13	1	121850-21680	BOLT, V-PULLEY	1							
14	1	121111-21501	BOLT, FLYWHEEL	6							
15	1	129001-22081	PISTON W/RINGS	4							
17	2	129001-22500	RING SET, PISTON	4							
21	1	129202-22300	PIN, PISTON(D26,L70)	4							
22	1	22252-000260	CIRCLIP 26	8							
23	1	729402-23100	ROD ASSY, CONNECTING	4							
27	2	129100-23910	BUSH, PISTON PIN	4							1
28	2	121550-23200	BOLT, CONNECTING ROD	8							
29	2	129150-23600	METAL, CRANKPIN	4							
31	1	129001-22901	PISTON W/RING OS=.25	4							2
33	2	129001-22950	RING SET O.S=0.25	4							2
37	1	129150-23610	METAL.PIN US=0.25	4							3
39	1	121111-21501	BOLT, FLYWHEEL	6							
40	1	124550-21600	RING GEAR	1							

Remarks
 (1) REPAIR PART.
 (2) OVER-SIZE(O.S=0.25)PART.
 (3) UNDER-SIZE(U.S=0.25)PART.
 (REMARKS)"EFFECTIVE MACHINE NO." OF
 ENGINE IS INDICATED ON THE
 ENGINE LABEL WHICH IS SHOWN
 IN FIG.4.

(A)=4TNE88-RBS
 (B)=
 (C)=

 (D)=
 (E)=
 (F)=


REF.	LEV.	PARTS NO.	DESCRIPTION	QTY						I	R
				(A)	(B)	(C)	(D)	(E)	(F)		
1	1	129457-28000	BALANCER ASSY	1							
2	2	129457-28011	CASEASSY, BALANCER	1							
4	3	129407-28240	BUSH	4							
5	2	729490-28510	BALANCER SHAFT ASSY.	1							
10	2	729490-28520	BALANCER SHAFT ASSY.	1							
15	2	129400-28150	GEAR, BALANCER A	1							
16	2	121850-21290	PARALLEL PIN	1							
17	2	128170-14150	NUT, CAM	1							
18	2	23876-005000	PLUG PT 1/16,SCREW	1							
19	2	26106-080142	BOLT 8X 14 PLATED	4							
20	1	129795-01960	PIPE, KNOCK	2							
21	1	24311-000140	O-RING 1A P-14.0	1							
22	1	26106-080602	BOLT M 8X 60 PLATED	4							
23	1	26106-080802	BOLT M 8X 80 PLATED	2							

Remarks
 (REMARKS)"EFFECTIVE MACHINE NO." OF
 ENGINE IS INDICATED ON THE
 ENGINE LABEL WHICH IS SHOWN
 IN FIG.4.

(A)=4TNE88-RBS

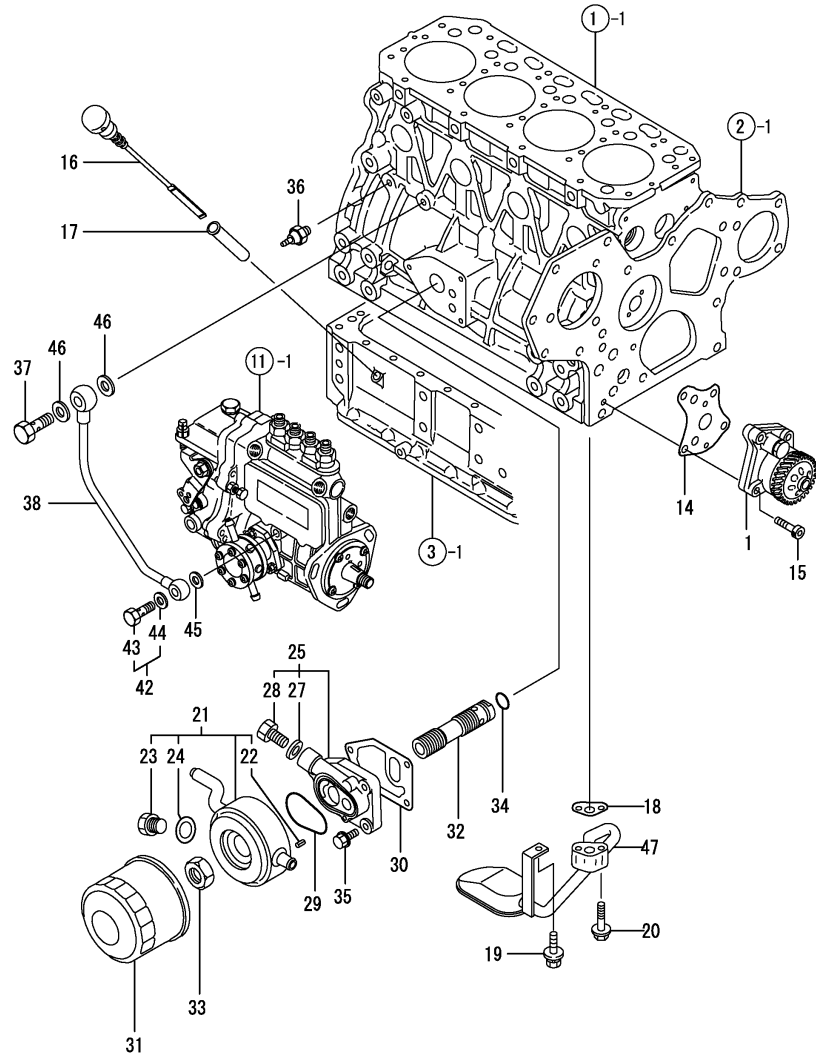
(B)=

(C)=

(D)=

(E)=

(F)=



REF.	LEV.	PARTS NO.	DESCRIPTION	QTY						I	R
				(A)	(B)	(C)	(D)	(E)	(F)		
1	1	129407-32000	PUMP ASSY, LUB. OIL	1							
14	1	129150-32020	GASKET, L.O. PUMP	1							
15	1	26450-060252	BOLT M 6X 25	4							
16	1	129457-34810	DIPSTICK	1							
17	1	121520-34810	GUIDE, DIPSTICK	1							
18	1	129150-35042	GASKET, (NON-ASB.)	1							
19	1	26014-080162	BOLT M 8X 16	1							
20	1	26106-080352	BOLT M 8X 35 PLATED	2							
21	1	129012-33000	COOLER ASSY, LUB OIL	1							
22	2	129120-33040	PARALLEL PIN	2							
23	2	129120-33051	PLUG, DRAIN	1							
24	2	129120-33060	GASKET, COOLER DRAIN	1							
25	1	129120-35001	BRACKET ASSY COOLER	1							
27	2	23414-100000	GASKET 10, ROUND	1							
28	2	23881-100002	PLUG 10	1							
29	1	129120-35110	GASKET 80	1							
30	1	129120-35121	GASKET, (NON-ASB.)	1							
31	1	129150-35153	FILTER 80X80L	1							1
32	1	129407-35300	STUD, LUB.OIL FILTER	1							
33	1	129150-35350	NUT	1							
34	1	24311-000160	O-RING 1A P-16.0	1							
35	1	26106-080252	BOLT M 8X 25 PLATED	3							
36	1	114250-39450	SWITCH,(0.5KG)L.O.	1							
37	1	124160-39140	BOLT 10, PIPE JOINT	1							
38	1	129550-39450	PIPE ASSY, LUB. OIL	1							
42	1	124550-59830	BOLT W/ SEAL WASHER	1							
43	2	124550-59820	BOLT 8, PIPE JOINT	1							
44	2	22190-080002	SEAL WASHER 8S	1							
45	1	22190-080002	SEAL WASHER 8S	1							
46	1	22190-100002	SEAL WASHER 10S	2							
47	1	129550-35090	PIPE, OIL INLET	1							

Remarks
(1) REPAIR PART.

N:Old $\begin{matrix} \leftarrow \text{Yes} \\ \text{No} \end{matrix}$ New, Q:Old $\begin{matrix} \leftarrow \text{No} \\ \text{Yes} \end{matrix}$ New, R:Old $\begin{matrix} \leftarrow \text{Yes} \\ \text{Yes} \end{matrix}$ New, S:Old $\begin{matrix} \leftarrow \text{No} \\ \text{No} \end{matrix}$ New, W:Add, Z:Discontinued, F:Interchangeable by set, K:Q'ty Change

(A)=4TNE88-RBS

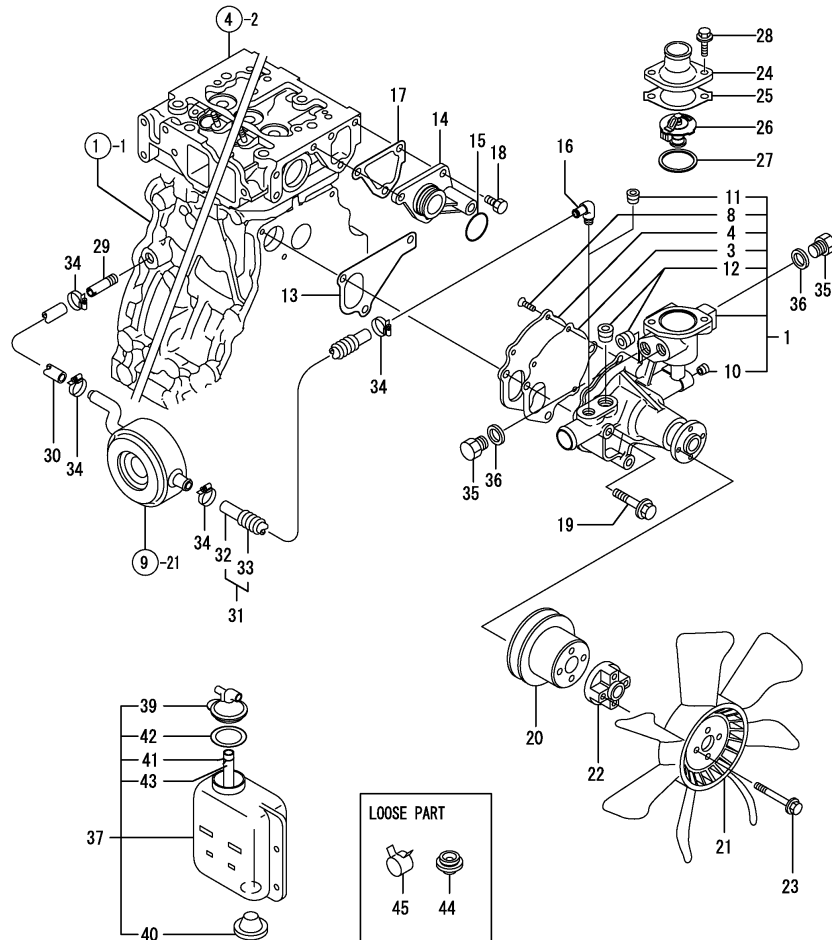
(B)=

(C)=

(D)=

(E)=

(F)=



REF.	LEV.	PARTS NO.	DESCRIPTION	QTY						I	R
				(A)	(B)	(C)	(D)	(E)	(F)		
1	1	129001-42003	PUMP ASSY.COOLANT	1							
3	2	129100-42051	GASKET, (NON-ASB.)	1							
4	2	129100-42121	PLATE	1							
8	2	121850-42410	SCREW	3							
10	2	23876-010000	PLUG PT1/8,SCREW	1							
11	2	23876-020000	PLUG PT1/4,SCREW	1							
I	12	23876-030000	PLUG PT3/8,SCREW	2							
13	1	129486-42021	GASKET	1							
14	1	129001-42040	JOINT	1							
15	1	129486-42140	O-RING,CW-P	1							
16	1	129103-49301	ELBOW PT 1/4	1							
17	1	124395-49840	GASKET, THERMO. CASE	1							
18	1	26106-080162	BOLT M 8X 16 PLATED	3							
19	1	26106-080602	BOLT M 8X 60 PLATED	3							
20	1	129403-42380	V-PULLEY(D=110)	1							
21	1	129556-44740	FAN, COOLING	1							
22	1	171353-44760	SPACER	1							
23	1	26106-060352	BOLT M 6X 35 PLATED	4							
24	1	129350-49530	COVER, THERMOSTAT	1							
25	1	129795-49551	GASKET, (NON-ASB.)	1							
26	1	129155-49801	THERMOSTAT (71)	1							
27	1	129150-49811	GASKET, (NON-ASB.)	1							
28	1	26106-080222	BOLT M 8X 22 PLATED	2							
29	1	129122-44480	JOINT	1							
30	1	129012-49030	HOSE, WATER	1							
31	1	129403-49060	PIPE,C.W. (L=500)	1							
32	2	129403-49050	PIPE,COOLER-C.W.PUMP	1							
33	2	129956-49230	TUBE,CORRUGATE(L=390)	1							
34	1	23000-022000	CLAMP 22	4							
35	1	121450-42450	PLUG M16	2							
36	1	124465-44950	GASKET 16	2							
37	1	121468-44510	SUB-TANK ASSY	1							
39	2	121450-44531	CAP	1							
40	2	121468-44540	PLUG, SUB-TANK	1							
41	2	124450-44560	CLAMP	1							
42	2	121470-44581	GASKET	1							
43	2	23065-070130	PIPE 7X 130	1							
44	1	119255-44660	RUBBER	2							
45	1	124766-59050	CLAMP 12	4							

Remarks
(REMARKS)"EFFECTIVE MACHINE NO." OF
ENGINE IS INDICATED ON THE
ENGINE LABEL WHICH IS SHOWN
IN FIG.4.

(A)=4TNE88-RBS

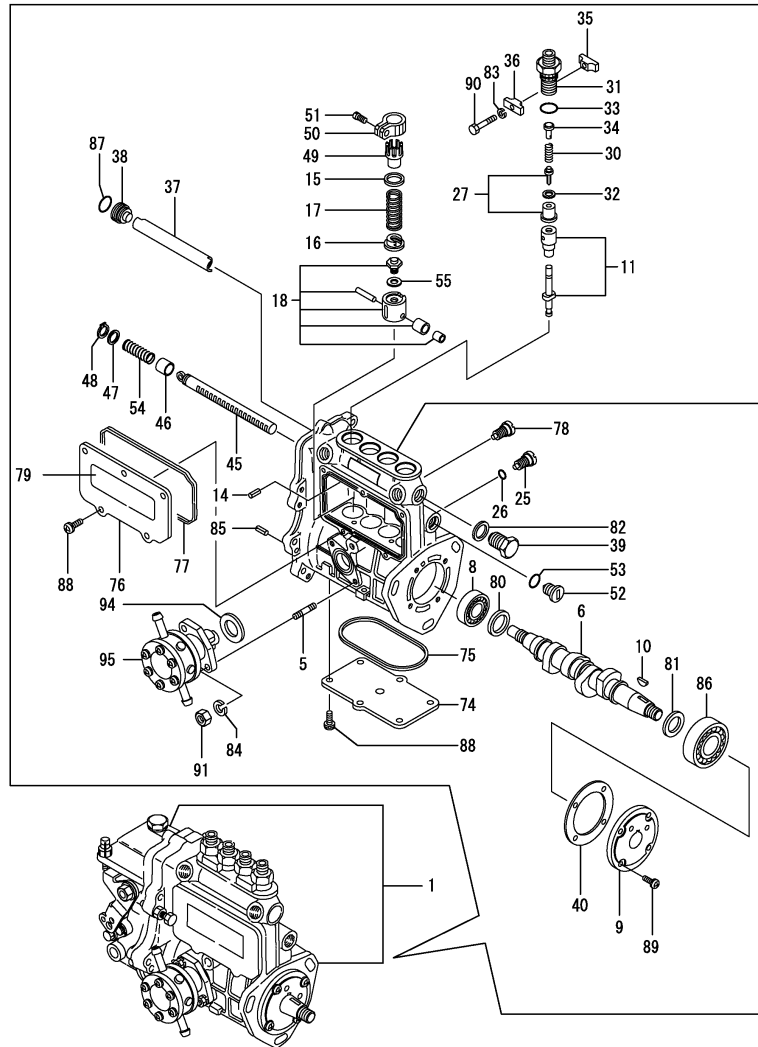
(B)=

(C)=

(D)=

(E)=

(F)=



Remarks
 (1)GOVERNOR (FIG.12)IS INCORPORATED
 IN THIS FUEL INJECTION PUMP
 (REF.NO.1).
 (REMARKS)"EFFECTIVE MACHINE NO." OF
 ENGINE IS INDICATED ON THE
 ENGINE LABEL WHICH IS SHOWN
 IN FIG.4.

REF.	LEV.	PARTS NO.	DESCRIPTION	Q'TY						I	R
				(A)	(B)	(C)	(D)	(E)	(F)		
1	1	729457-51380	PUMP ASSY, F.INJECT	1							1
5	2	129155-51020	STUD, FEED PUMP	2							
6	2	129470-51040	CAMSHAFT	1							
8	2	129155-51051	RETAINER	1							
9	2	129155-51060	CAM SHAFT SUPPORT	1							
10	2	122710-51090	KEY	1							
11	2	129506-51100	PLUNGER W/BARREL	4							
14	2	129155-51140	PIN, BARREL LOCKING	4							
15	2	174307-51170	RETAINER A	4							
16	2	129155-51180	SPRING SHOE, PLUNGER	4							
17	2	124950-51190	SPRING, PLUNGER	4							
18	2	129155-51200	TAPPET ASSY	4							
25	2	129155-51270	LOCKING, TAPPET	4							
26	2	129155-51280	O-RING S6	4							
27	2	105300-51300	VALVE W/SEAT, DELIV.	4							
30	2	129155-51320	SPRING, DELIV. VALVE	4							
31	2	129155-51340	GUARD,DELIVERY VALVE	4							
32	2	124550-51350	GASKET, DELIVERY	4							
33	2	124550-51370	O-RING, DELIVERY	4							
34	2	129155-51370	STOPPER, VALVE	4							
35	2	129155-51380	LOCKING (A)	2							
36	2	129155-51390	LOCKING (B)	2							
37	2	129555-51400	DEFLECTER	1							
38	2	129155-51410	CHECK BOLT,DEFLECTOR	1							
39	2	129155-51420	PLUG (M16)	1							
40	2	129155-51450	SHIM SET, ADJUSTING	1							
45	2	129555-51500	RACK, CONTROL	1							
46	2	129155-51521	BUSH, RACK	1							
47	2	129155-51530	SPACER, AUX. SPRING	1							
48	2	129155-51540	CIRCLIP	1							
49	2	129155-51550	PINION, CONTROL	4							
50	2	129100-51560	PINION	4							
51	2	129100-51570	SCREW	4							
52	2	129155-51570	PLUG (M12)	1							
53	2	129155-51580	O-RING	1							
54	2	129155-51591	SPRING, RACK	1							
I 55	2	129155-51600	SHIM PACK	4							
74	2	129555-51701	COVER	1							
75	2	129555-51711	GASKET	1							
76	2	129555-51751	COVER, SIDE	1							
77	2	129555-51761	GASKET, SIDE COVER	1							
78	2	129155-51790	LOCKING, RACK	1							
79	2	129156-51910	LABEL, CAUTION	1							
80	2	129155-51930	SPACER T=3.25	1							
81	2	129155-51940	SPACER T=1.5	1							
82	2	22190-160002	SEAL WASHER 16S	1							
83	2	22217-050000	SPRING WASHER 5	2							
84	2	22217-060000	SPRING WASHER 6	2							
85	2	22351-050010	SPRING PIN 5X10	2							
86	2	24101-063034	BALL BEARING	1							
87	2	24341-000160	O-RING 1A S-16.0	1							

N:Old $\begin{matrix} \text{Yes} \\ \text{No} \end{matrix}$ New, Q:Old $\begin{matrix} \text{No} \\ \text{Yes} \end{matrix}$ New, R:Old $\begin{matrix} \text{Yes} \\ \text{No} \end{matrix}$ New, S:Old $\begin{matrix} \text{No} \\ \text{Yes} \end{matrix}$ New, W:Add, Z:Discontinued, F:Interchangeable by set, K:Q'ty Change

++ CONTINUE ++

(C)Copy Rights YANMAR CO.,LTD.

(A)=4TNE88-RBS

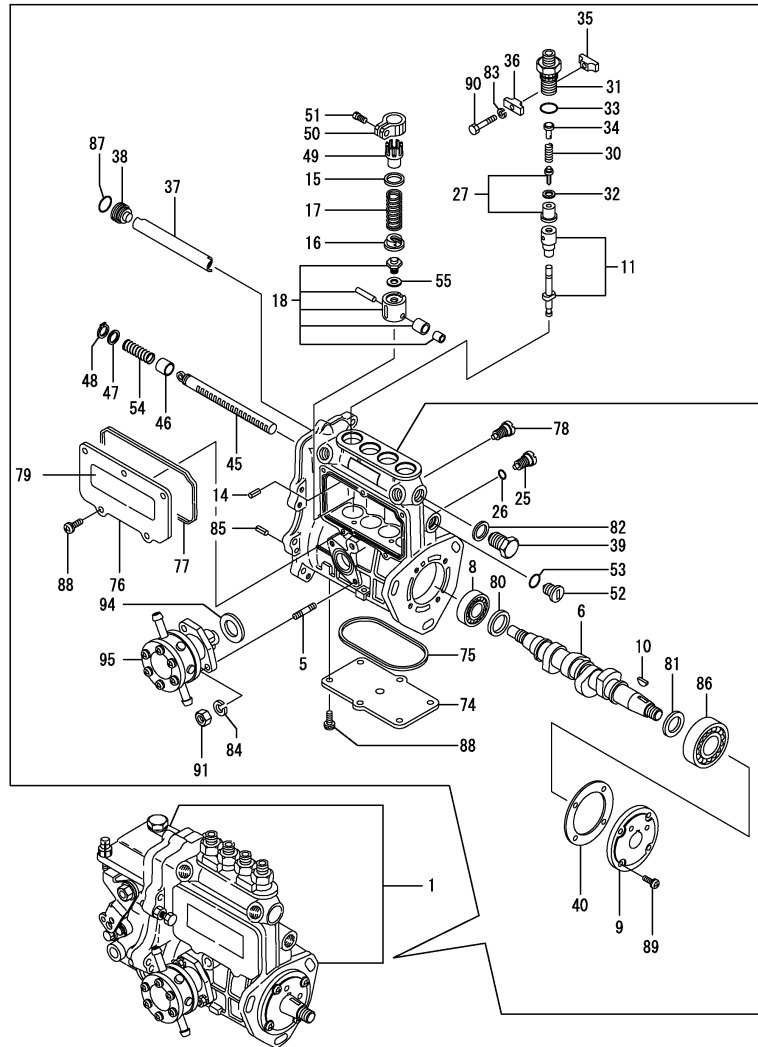
(B)=

(C)=

(D)=

(E)=

(F)=



REF.	LEV.	PARTS NO.	DESCRIPTION	QTY						I	R
				(A)	(B)	(C)	(D)	(E)	(F)		
88	2	26022-050122	SCREW M 5X 12	11							
89	2	26022-060162	SCREW M 6X 16	4							
90	2	26116-050302	BOLT M 5X 30 PLATED	2							
91	2	26716-060002	NUT 6	2							
94	2	129155-52051	GASKET	1							
95	2	129100-52100	PUMP ASSY, FUEL FEED	1							

Remarks
 (1) GOVERNOR (FIG.12) IS INCORPORATED
 IN THIS FUEL INJECTION PUMP
 (REF.NO.1).
 (REMARKS)"EFFECTIVE MACHINE NO." OF
 ENGINE IS INDICATED ON THE
 ENGINE LABEL WHICH IS SHOWN
 IN FIG.4.

(A)=4TNE88-RBS

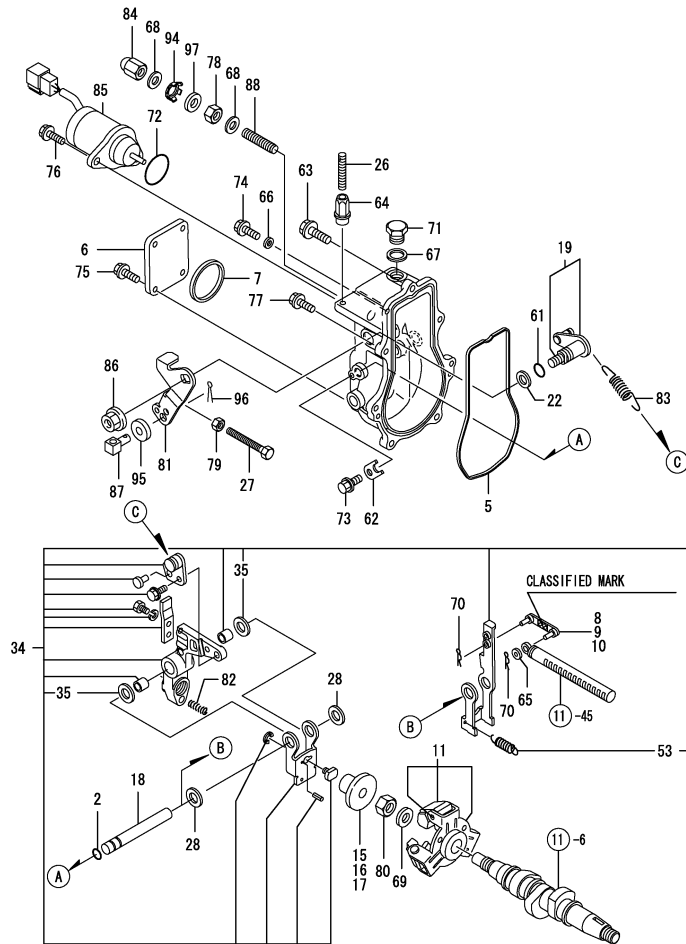
(B)=

(C)=

(D)=

(E)=

(F)=



REF.	LEV.	PARTS NO.	DESCRIPTION	Q'TY						I	R
				(A)	(B)	(C)	(D)	(E)	(F)		
2	2	129155-51280	O-RING S6	1							
5	2	129052-61051	GASKET, GOV. CASE	1							
6	2	129052-61060	COVER	1							
7	2	129052-61071	GASKET, COVER	1							
8	2	129155-61120	LINK L=30(MARK 0)	1							1
9	2	129155-61130	LINK L=31(MARK 1)	1							1
10	2	129155-61140	LINK L=30.5(MARK 05)	1							1
11	2	129155-61202	WEIGHT ASSY,GOVERNOR	1							
15	2	129155-61341	SLEEVE(L=25.5)	1							2
16	2	129155-61350	SLEEVE(L=24.9)	1							2
17	2	129155-61360	SLEEVE(L=25.2)	1							2
18	2	129052-61390	SHAFT, GOV. LEVER	1							
19	2	129100-61400	SHAFT ASSY, CONTROL	1							
22	2	129155-61430	SPACER, SHAFT	1							
26	2	129155-61450	BOLT, REVOL. LIMIT	1							
27	2	129155-61460	BOLT, IDLE LIMIT	1							
28	2	129155-61480	SPACER ASSY	2							
34	2	119908-61501	LEVER ASSY,GOVERNOR	1							
35	3	174307-51700	SHIM SET	2							
53	3	129486-61540	SPRING, SET	1							
61	2	129155-61830	O-RING S10	1							
62	2	119660-61901	RETAINER, SHAFT	1							
63	2	129155-61950	BOLT, WASHER BASED	1							
64	2	129209-61370	NUT M6	1							
65	2	22117-040000	WASHER 4	1							
66	2	22190-060003	SEAL WASER 6	1							
67	2	22190-100002	SEAL WASHER 10S	1							
68	2	22190-120002	SEAL WASHER 12	2							
69	2	22287-120000	WASHER 12	1							
70	2	22372-040000	SNAP PIN 4	2							
71	2	23887-100002	PLUG 10	1							
72	2	24341-000280	O-RING 1A S-28.0	1							
72-1	2	158552-61900	O-RING	1							N
(A=EXXXXX)											
73	2	26106-060102	BOLT 6X 10 PLATED	1							
74	2	26106-060102	BOLT 6X 10 PLATED	1							
75	2	26106-060102	BOLT 6X 10 PLATED	4							
76	2	26106-060142	BOLT M 6X 14 PLATED	2							
77	2	26106-060202	BOLT M 6X 20 PLATED	6							
78	2	26736-120002	NUT M12	1							
79	2	26756-060002	LOCK NUT 6	1							
80	2	26776-120002	LOCK NUT M12 PLATED	1							
81	2	129100-61440	LEVER, CONTROL	1							
82	2	129100-61650	SPRING, FUEL CONTROL	1							
83	2	171353-61710	SPRING, GOVERNOR	1							
84	2	129209-61930	CAP NUT	1							
85	2	119653-77950	SOLENOID, STOP	1							
86	2	26366-080002	NUT M 8	1							
87	2	194150-01370	ADJUSTER	1							
88	2	129129-61450	TORQUE SPRING ASSY	1							
94	2	129209-61970	PLATE	1							

Remarks

(1) SELECTIVE PARTS: CERTAIN THE CLASSIFICATION MARK, THEN PLACE YOUR ORDER.(REF. TO ILLUSTRATION)
 (2) SELECTIVE PART.

* THIS FIGURE(GOVERNOR ASSY) IS INCORPORATED IN THE FUEL INJECTION PUMP ASSY(FIG.11).
 (REMARKS)"EFFECTIVE MACHINE NO." OF ENGINE IS INDICATED ON THE ENGINE LABEL WHICH IS SHOWN IN FIG.4.

(A)=4TNE88-RBS

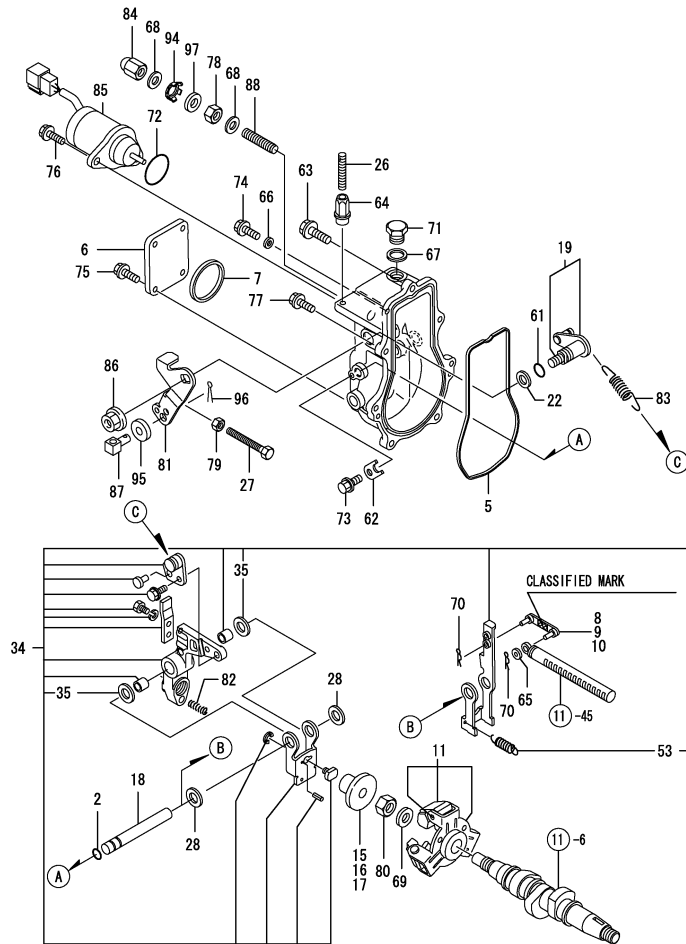
(B)=

(C)=

(D)=

(E)=

(F)=



REF.	LEV.	PARTS NO.	DESCRIPTION	Q'TY						I	R
				(A)	(B)	(C)	(D)	(E)	(F)		
95	2	22137-080000	WASHER 8, POLISHED	1							
96	2	22417-160180	COTTER PIN 1.6X18	1							
97	2	23414-120016	GASKET 12	1							

Remarks

(1) SELECTIVE PARTS: CERTAIN THE CLASSIFICATION MARK, THEN PLACE YOUR ORDER.(REF. TO ILLUSTRATION)

(2) SELECTIVE PART.

* THIS FIGURE(GOVERNOR ASSY) IS INCORPORATED IN THE FUEL INJECTION PUMP ASSY(FIG.11).

(REMARKS)"EFFECTIVE MACHINE NO." OF ENGINE IS INDICATED ON THE ENGINE LABEL WHICH IS SHOWN IN FIG.4.

(A)=4TNE88-RBS

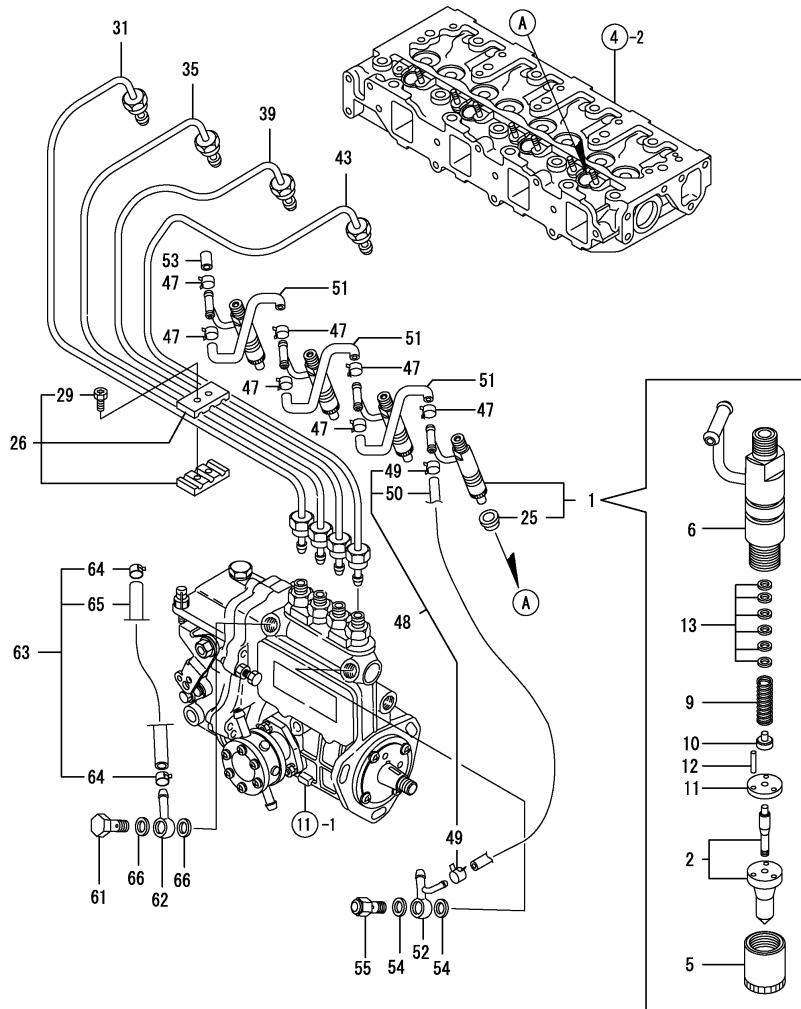
(B)=

(C)=

(D)=

(E)=

(F)=



REF.	LEV.	PARTS NO.	DESCRIPTION	QTY						I	R
				(A)	(B)	(C)	(D)	(E)	(F)		
1	1	729457-53100	FUEL INJECTOR TN	4							
2	2	129503-53000	NOZZLE ASSY,F.INJECT	4							
5	2	114250-53080	NUT, NOZZLE CASE	4							
6	2	129100-53100	HOLDER ASSY, NOZZLE	4							
9	2	114250-53120	SPRING, NOZZLE	4							
10	2	114250-53130	SEAT, NOZZLE SPRING	4							
11	2	114250-53140	PLATE, STOP	4							
12	2	114250-53210	PIN	8							
13	2	114250-53400	SHIM PACK	4							
25	2	129470-11920	GASKET	4							
26	1	129150-59120	RETAINER, INJ. PIPE	2							
29	2	129150-59131	BOLT M4X14,HEX.SCKT.	4							
31	1	129400-59910	PIPE, FUEL INJECTION	1							
35	1	129400-59920	PIPE, FUEL INJECTION	1							
39	1	129400-59930	PIPE, FUEL INJECTION	1							
43	1	129400-59940	PIPE, FUEL INJECTION	1							
47	1	124066-59100	CLAMP 8	7							
48	1	119840-59500	PIPE ASSY, RETURN	1							
49	2	124066-59100	CLAMP 8	2							
50	2	119840-59560	PIPE, FUEL RETURN	1							
51	1	121250-59550	PIPE, FUEL	3							
52	1	119840-59570	JOINT	1							
53	1	129150-59580	CAP	1							
54	1	22190-120002	SEAL WASHER 12	2							
55	1	119813-59950	VALVE ASSY, CHECK	1							
61	1	103854-39140	BOLT, PIPE JOINT	1							
62	1	101304-59020	JOINT 12, PIPE	1							
63	1	119860-59020	PIPE ASSY, FUEL OIL	1							
64	2	124766-59050	CLAMP 12	2							
65	2	105110-59560	PIPE, FUEL OIL	1							
66	1	22190-120002	SEAL WASHER 12	2							

Remarks
 (REMARKS)"EFFECTIVE MACHINE NO." OF
 ENGINE IS INDICATED ON THE
 ENGINE LABEL WHICH IS SHOWN
 IN FIG.4.

(A)=4TNE88-RBS

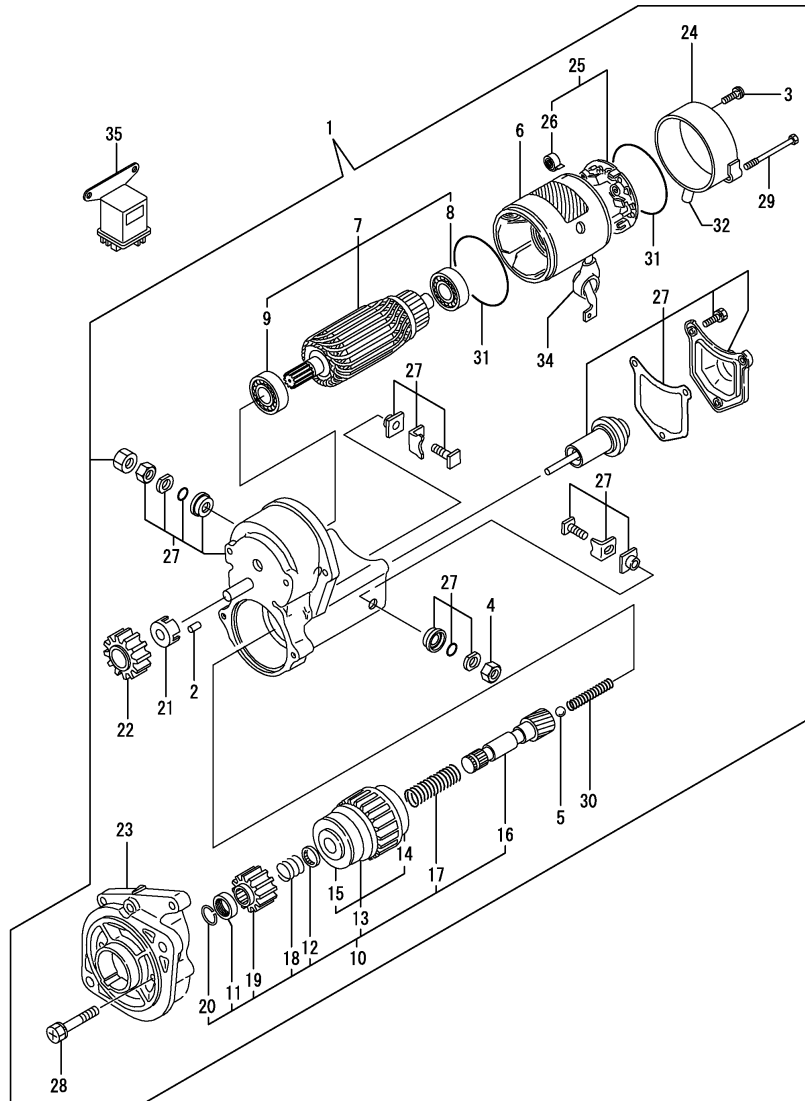
(B)=

(C)=

(D)=

(E)=

(F)=



REF.	LEV.	PARTS NO.	DESCRIPTION	QTY						I	R
				(A)	(B)	(C)	(D)	(E)	(F)		
1	1	129407-77010	STARTER ASSY	1							
2	2	X0283060061	ROLLER	5							
3	2	129129-77460	SCREW	2							
4	2	X9490561370	NUT	1							
5	2	X9491200240	BALL	1							
6	2	129407-77210	YOKE	1							
7	2	129407-77220	ARMATURE ASSY	1							
8	3	129129-77230	BEARING	1							
9	3	129129-77240	BEARING	1							
10	2	129407-77250	STARTER KIT	1							
11	3	X0280210230	NUT	1							
12	3	X0283270140	RETAINER	1							
13	3	129407-77390	CLUTCH,STARTER	1							
14	4	129129-77440	BEARING	1							
15	4	129129-77450	BEARING	1							
16	3	129129-77400	SHAFT	1							
17	3	129129-77410	SPRING, COIL	1							
18	3	X9491703371	SPRING, COIL	1							
19	3	129129-77420	PINION	1							
20	3	129129-77430	RING	1							
21	2	129129-77260	RETAINER	1							
22	2	129129-77270	PINION	1							
23	2	129407-77280	HOUSING	1							
24	2	129407-77290	FRAME	1							
25	2	129407-77300	HOLDER ASSY	1							
26	3	X9491730461	SPRING	4							
27	2	129407-77310	SWITCH ASSY	1							
28	2	129129-77320	BOLT	2							
29	2	129407-77330	BOLT,W/WASHER	2							
30	2	129129-77340	SPRING	1							
31	2	129129-77350	O-RING	2							
32	2	129129-77362	COVER	1							
34	2	129129-77380	CAP	1							
35	1	119650-77910	RELAY, GROW	1							

Remarks
 (REMARKS)"EFFECTIVE MACHINE NO." OF
 ENGINE IS INDICATED ON THE
 ENGINE LABEL WHICH IS SHOWN
 IN FIG.4.

N:Old $\xrightarrow{\text{Yes}}$ New, Q:Old $\xrightarrow{\text{No}}$ New, R:Old $\xrightarrow{\text{Yes}}$ New, S:Old $\xrightarrow{\text{No}}$ New, W:Add, Z:Discontinued, F:Interchangeable by set, K:Q'ty Change

Part Number Index

All parts are stipulated in the order of part numbers.

(Depending on the area in which the part is used.)

This index will display the location of the part according to each part number.

PARTS No. INDEX

PARTS No.	Fig.	Ref.No.
101304-59020	13	62
103854-39140	13	61
105110-59560	13	65
105300-51300	11	27
105425-01690	3	4
114250-39450	9	36
114250-53080	13	5
114250-53120	13	9
114250-53130	13	10
114250-53140	13	11
114250-53210	13	12
114250-53400	13	13
119225-11740	2	27
119225-11750	2	28
119255-44660	10	44
119309-01810	1	31
119609-32040	2	15
119625-11870	4	21
119625-11880	4	22
119625-11900	4	23
119650-77910	14	35
119653-77950	12	85
119660-61901	12	62
119717-13600	5	12
119802-11280	4	37
119802-13600	5	10
119802-13660	5	11
119813-59950	13	55
119840-59500	13	48
119840-59560	13	50
119840-59570	13	52
119860-59020	13	63
119908-61501	12	34
120130-11860	4	6
121023-01550	2	24
121111-21501	7	14
		39
121250-59550	13	51
121400-11340	4	18
121450-01560	2	2
121450-42450	10	35
121450-44531	10	39
121468-44510	10	37
121468-44540	10	40
121470-44581	10	42
121520-34810	9	17
121550-23200	7	28
121850-21290	7	6
	8	16
121850-21680	7	13

PARTS No.	Fig.	Ref.No.
121850-42410	10	8
121850-51960	2	12
122710-51090	11	10
124066-59100	13	47
		49
124160-01751	2	8
124160-01910	1	5
124160-11360	4	50
124160-39140	9	37
124240-01871	2	9
		30
	6	18
124240-01883	2	31
	6	19
124395-49840	10	17
124450-44560	10	41
124460-11340	4	19
124465-44950	10	36
124550-21600	7	40
124550-51350	11	32
124550-51370	11	33
124550-59820	9	43
124550-59830	9	42
124736-07900	4	52
124766-59050	10	45
	13	64
124950-51190	11	17
128170-14150	8	17
129001-01250	1	8
129001-02930	1	25
129001-22081	7	15
129001-22500	7	17
129001-22901	7	31
129001-22950	7	33
129001-42003	10	1
129001-42040	10	14
129001-91841	2	22
129001-91870	3	9
129001-91910	3	10
129012-33000	9	21
129012-49030	10	30
129052-61051	12	5
129052-61060	12	6
129052-61071	12	7
129052-61390	12	18
129100-01520	2	1
129100-01580	1	43
	3	15
	7	2
129100-01590	2	4

PARTS No.	Fig.	Ref.No.
129100-01640	3	11
129100-11100	4	12
129100-11110	4	13
129100-23910	7	27
129100-25061	6	9
129100-42051	10	3
129100-42121	10	4
129100-51560	11	50
129100-51570	11	51
129100-52100	11	95
129100-53100	13	6
129100-61400	12	19
129100-61440	12	81
129100-61650	12	82
129103-49301	10	16
129120-33040	9	22
129120-33051	9	23
129120-33060	9	24
129120-35001	9	25
129120-35110	9	29
129120-35121	9	30
129122-44480	10	29
129129-61450	12	88
129129-77230	14	8
129129-77240	14	9
129129-77260	14	21
129129-77270	14	22
129129-77320	14	28
129129-77340	14	30
129129-77350	14	31
129129-77362	14	32
129129-77380	14	34
129129-77400	14	16
129129-77410	14	17
129129-77420	14	19
129129-77430	14	20
129129-77440	14	14
129129-77450	14	15
129129-77460	14	3
129150-01200	1	33
129150-01580	2	3
129150-01881	2	33
129150-02020	1	13
129150-02450	6	4
129150-02870	1	37
129150-02930	1	28
129150-02940	1	40
129150-03020	4	42
129150-03070	4	43
129150-03080	4	44

PARTS No.	Fig.	Ref.No.
129150-03090	4	1
129150-03100	2	11
129150-11230	4	34
129150-11280	4	29
129150-11370	4	20
129150-11750	4	36
129150-11810	4	8
129150-14101	6	7
129150-14200	6	1
129150-14400	6	2
129150-21200	7	5
129150-23600	7	29
129150-23610	7	37
129150-25101	6	10
129150-25900	6	15
129150-25920	6	13
129150-26050	6	21
129150-32020	9	14
129150-35042	9	18
129150-35153	9	31
129150-35350	9	33
129150-49811	10	27
129150-59120	13	26
129150-59131	13	29
129150-59580	13	53
129150-77511	5	4
		14
129155-11260	4	27
129155-11270	4	28
129155-49801	10	26
129155-51020	11	5
129155-51051	11	8
129155-51060	11	9
129155-51140	11	14
129155-51180	11	16
129155-51200	11	18
129155-51270	11	25
129155-51280	11	26
	12	2
129155-51320	11	30
129155-51340	11	31
129155-51370	11	34
129155-51380	11	35
129155-51390	11	36
129155-51410	11	38
129155-51420	11	39
129155-51450	11	40
129155-51521	11	46
129155-51530	11	47
129155-51540	11	48

PARTS No. INDEX

PARTS No.	Fig.	Ref.No.
129155-51550	11	49
129155-51570	11	52
129155-51580	11	53
129155-51591	11	54
129155-51600	11	55
129155-51790	11	78
129155-51930	11	80
129155-51940	11	81
129155-52051	11	94
129155-61120	12	8
129155-61130	12	9
129155-61140	12	10
129155-61202	12	11
129155-61341	12	15
129155-61350	12	16
129155-61360	12	17
129155-61430	12	22
129155-61450	12	26
129155-61460	12	27
129155-61480	12	28
129155-61830	12	61
129155-61950	12	63
129156-51910	11	79
129202-22300	7	21
129209-61370	12	64
129209-61930	12	84
129209-61970	12	94
129350-49530	10	24
129400-28121	7	7
129400-28150	8	15
129400-59910	13	31
129400-59920	13	35
129400-59930	13	39
129400-59940	13	43
129403-42380	10	20
129403-49050	10	32
129403-49060	10	31
129407-01340	1	34
129407-11700	4	2
129407-13110	5	9
129407-28240	8	4
129407-32000	9	1
129407-35300	9	32
129407-77010	14	1
129407-77210	14	6
129407-77220	14	7
129407-77250	14	10
129407-77280	14	23
129407-77290	14	24
129407-77300	14	25

PARTS No.	Fig.	Ref.No.
129407-77310	14	27
129407-77330	14	29
129407-77390	14	13
129429-01721	3	3
129457-13100	5	8
129457-28000	8	1
129457-28011	8	2
129457-34810	9	16
129470-11920	13	25
129470-51040	11	6
129486-01670	3	14
129486-11350	4	41
129486-42021	10	13
129486-42140	10	15
129486-61540	12	53
129488-12100	5	1
129503-53000	13	2
129506-51100	11	11
129550-01702	3	1
129550-11290	4	30
129550-11310	4	47
129550-12112	5	2
129550-21650	7	11
129550-35090	9	47
129550-39450	9	38
129555-01750	3	6
129555-11241	4	26
129555-26000	6	20
129555-51400	11	37
129555-51500	11	45
129555-51701	11	74
129555-51711	11	75
129555-51751	11	76
129555-51761	11	77
129556-44740	10	21
129795-01780	3	13
129795-01800	2	7
129795-01950	2	10
129795-01960	8	20
129795-02411	1	11
129795-11120	4	14
129795-11180	4	15
129795-21661	7	12
129795-49551	10	25
129956-49230	10	33
158552-61900	12	72 -1
171051-01921	1	6
171340-77520	5	5
171353-44760	10	22
171353-61710	12	83

PARTS No.	Fig.	Ref.No.
174307-51170	11	15
174307-51700	12	35
194150-01370	12	87
729402-11650	4	33
729402-14580	6	3
729402-23100	7	23
729429-01721	3	2
729457-01561	1	1
729457-21700	7	1
729457-51380	11	1
729457-53100	13	1
729490-28510	8	5
729490-28520	8	10
X0280210230	14	11
X0283060061	14	2
X0283270140	14	12
X9490561370	14	4
X9491200240	14	5
X9491703371	14	18
X9491730461	14	26

PARTS No.	Fig.	Ref.No.
-----------	------	---------



YANMAR CO., LTD.