



PARTS CATALOG



Directions for the Parts Catalog.

1. The parts stipulated in this Parts Catalog are not necessarily standard equipped parts.
2. Parts may change without prior notice.
3. The following is an example of the Parts Catalog format.

OCF10-G21601 29. FUEL INJECTION PUMP(W/BOOST)

REF.	LEV.	PARTS NO.	DESCRIPTION	Q'TY						I	R
				(A)	(B)	(C)	(D)	(E)	(F)		
1	1	729595-51390	FUEL INJECTION PUMP	1	1	1	1	1	1		1
1-1	1	729595-51391	FUEL INJECTION PUMP	1	1	1	1	1	1	N	1
		(A=E00185) (B=E00200)									
3	2	26022-060162	SCREW M 6X 16	9	9	9	9	9			
3-1	2	26022-060162	SCREW M 6X 16	4	4	4	4	4		K	
		(A=E00156) (B=E00156) (C=E00156) (D=E00156) (E=E00156)									
4	2	129470-51040	CAMSHAFT	1	1	1	1	1			
5	2	122710-51050	BEARING, ROLLER	2	2	2	2	2			
6	2	129470-51060	RETAINER	1	1	1	1	1			

Remarks

(1) BOOST COMPEMSATOR TYPE. OPTIONAL PART, TO E00155,(4JH-DT, 4JH-DTZ

① Ref. No.

The Ref. No. listed may not be in accordance with the illustration Ref. No.

(Ex.) Illustration No. 1 List Ref No. 1 (Before change) → 1-1 (After change)

For interchangeable symbols N, R and K, illustrations for new parts may be abbreviated.

② Lev. (Level)

Level indication

The numbers below indicate the level of relativity towards the main part.

1 ---- Main parts (Assembly parts)

2 ---- Sub component included in " 1 ".

3 ---- Sub component included in " 2 ".

Note) Parts that are not for sale are partially illustrated but not listed.

③ Interchangeability Mark

When a part change takes place, one of the following interchangeability symbols is indicated beside the part.

Symbol	Interchangeability	Contents note
N	Old $\begin{matrix} \leftarrow \text{Yes} \\ \text{No} \rightarrow \end{matrix}$ New	New Part is interchangeable for Old Part but Old Part is not interchangeable for New Part.
Q	Old $\begin{matrix} \leftarrow \text{No} \\ \text{Yes} \rightarrow \end{matrix}$ New	New Part is not interchangeable for Old Part but Old Part is interchangeable for New Part.
R	Old $\begin{matrix} \leftarrow \text{Yes} \\ \text{Yes} \rightarrow \end{matrix}$ New	New/ Old Parts are both interchangeable.
S	Old $\begin{matrix} \leftarrow \text{No} \\ \text{No} \rightarrow \end{matrix}$ New	New/ Old Parts are both not interchangeable.
W		Part newly added.
Z		Part discontinued.
F		Not interchangeable by a single part but interchangeable together with related parts.
K		Changes only for used parts quantities.

④ Effective Machine No.

When a part changes, the effective Machine No. will be indicated in the (A)-(F) column.

Product Symbol	Product No.	Product Symbol	Product No.
C	Clutch No. Compressor No.	F	Machine No. (Agricultural Equip.)
D	Drive No.	M	Machine No.
E	Engine No.		

Note 1) A date may follow the symbol. (Ex.) 1996.01

Note 2) " XXXXX " and " ZZZZZ " are for parts that could not be predicted or for engine models that could not be identified.

Note 3) (A=E00185) is the E (Engine Serial Number) for the column (A) model (in this case 4JH-DT) after the parts design change.

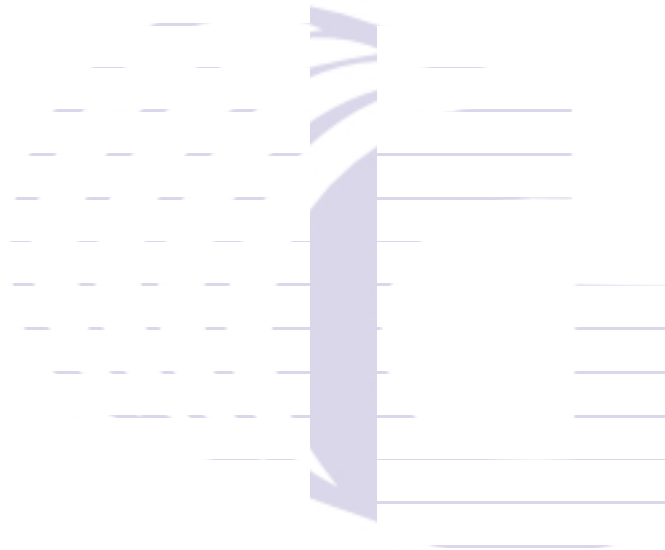
⑤ Remarks Mark

Figures or alphabets (symbols) are entered in the remarks column.

The comments (remarks) on parts that are indicated at the bottom of the illustration are the same symbols as those stated above.

Fig.No.	GROUP NAME
	ENGINE 2,3TNE66KC-ET(2,E,U,K)
1.	CYLINDER BLOCK
2.	CYLINDER BLOCK
3.	GEAR HOUSING
4.	GEAR HOUSING
5.	MOUNTING FLANGE & OIL SUMP
6.	MOUNTING FLANGE & OIL SUMP
7.	CYLINDER HEAD & BONNET
8.	CYLINDER HEAD & BONNET
9.	SUCTION MANIFOLD
10.	EXHAUST MANIFOLD
11.	CAMSHAFT & DRIVING GEAR
12.	CRANKSHAFT & PISTON
13.	LUB.OIL SYSTEM
14.	COOLING WATER SYSTEM
15.	FUEL INJECTION PUMP
16.	FUEL INJECTION PUMP
17.	GOVERNOR
18.	FUEL INJECTION VALVE
19.	FUEL INJECTION VALVE
20.	STARTING MOTOR
21.	STARTING MOTOR
22.	GASKET SET

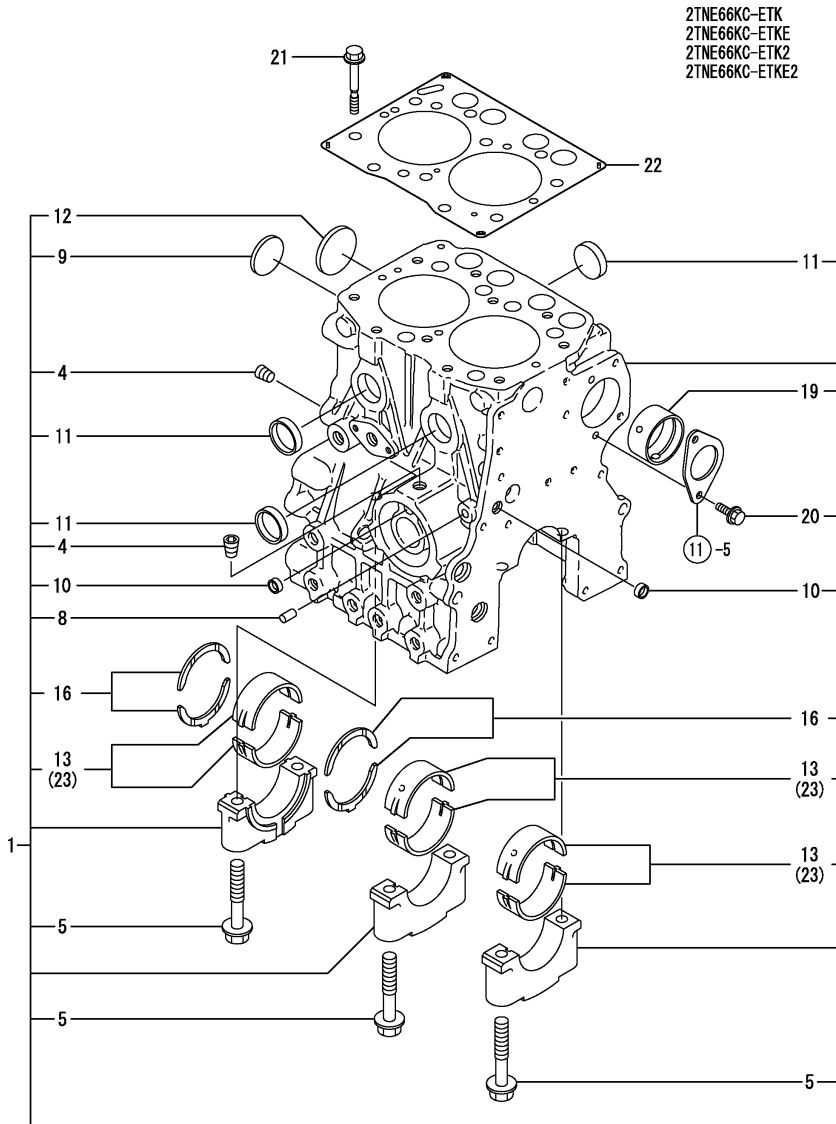
Fig.No.	GROUP NAME
---------	------------



(A)=2TNE66KC-ETK
 (B)=2TNE66KCETKE
 (C)=2TNE66KCETK2

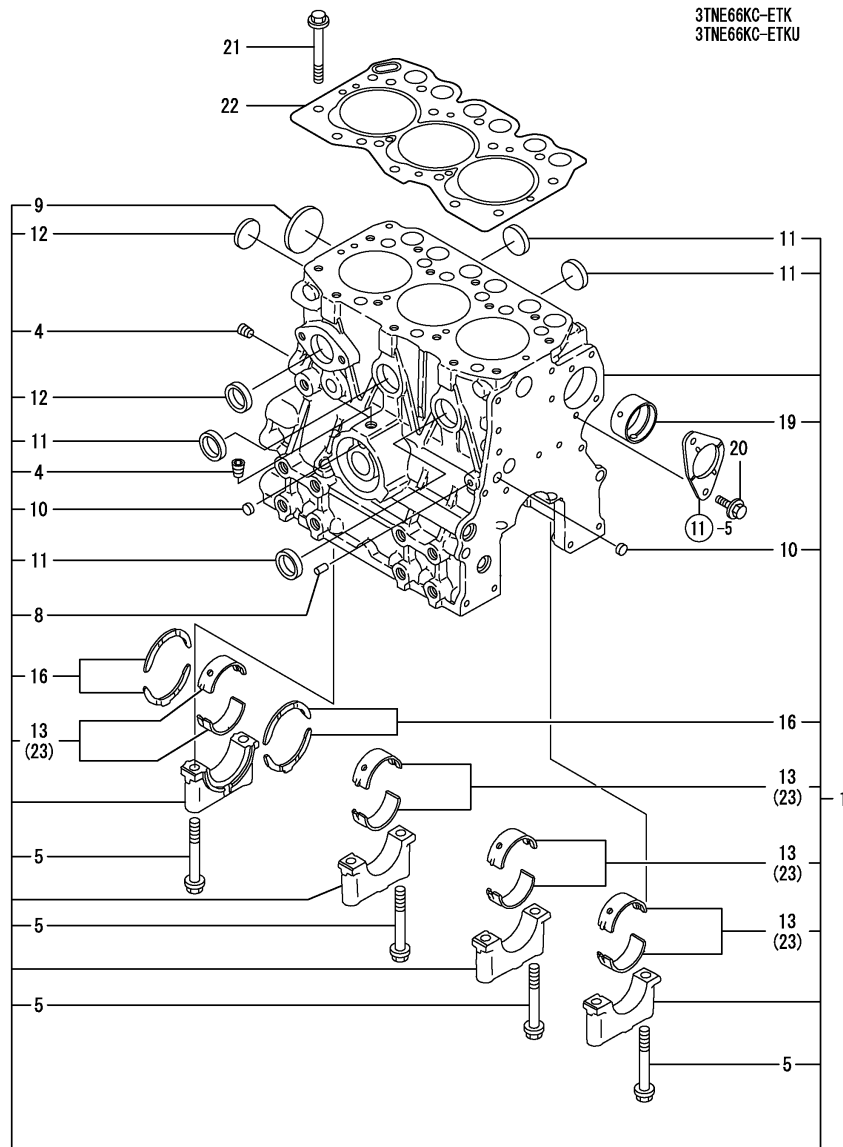
(D)=2TNE66KETKE2
 (E)=3TNE66KC-ETK
 (F)=3TNE66KCETKU

REF.	LEV.	PARTS NO.	DESCRIPTION	QTY						I	R
				(A)	(B)	(C)	(D)	(E)	(F)		
1	1	719309-01560	BLOCK ASSY, CYLINDER	1	1	1	1				
I 4	2	124060-01050	PLUG PT1/8	2	2	2	2				
I 5	2	119260-02020	BOLT	6	6	6	6				
I 8	2	27221-060100	PLUG 6X10	1	1	1	1				
I 9	2	119265-01250	PLUG 40	1	1	1	1				
I 10	2	27241-100000	PLUG 10	2	2	2	2				
I 11	2	119285-01990	PLUG 25	3	3	3	3				
I 12	2	105311-01090	PLUG 30 (SUS)	1	1	1	1				
13	2	119260-02800	MAIN BEARING	3	3	3	3				
16	2	119260-02930	THRUST BEARING	2	2	2	2				
19	2	119266-02410	BUSH	1	1	1	1				
20	2	26106-060122	BOLT M 6X 12 PLATED	2	2	2	2				
21	1	119266-01200	STUD, CYL. HEAD	10	10	10	10				
22	1	119309-01330	GASKET, CYL. HEAD	1	1	1	1				
23	1	719260-02870	MAIN BEARING US=0.25	3	3	3	3				1



Remarks
 (1) UNDER-SIZE(U.S=0.25)PART.

(A)=2TNE66KC-ETK
 (B)=2TNE66KCETKE
 (C)=2TNE66KCETK2

 (D)=2TNE66KETKE2
 (E)=3TNE66KC-ETK
 (F)=3TNE66KCETKU


REF.	LEV.	PARTS NO.	DESCRIPTION	Q'TY						I	R
				(A)	(B)	(C)	(D)	(E)	(F)		
1	1	719209-01560	BLOCK ASSY, CYLINDER							1	1
I 4	2	124060-01050	PLUG PT1/8							2	2
I 5	2	119260-02020	BOLT							8	8
I 8	2	27221-060100	PLUG 6X10							1	1
I 9	2	119265-01250	PLUG 40							1	1
I 10	2	27241-100000	PLUG 10							2	2
I 11	2	119285-01990	PLUG 25							4	4
I 12	2	105311-01090	PLUG 30 (SUS)							2	2
13	2	119260-02800	MAIN BEARING							4	4
16	2	119260-02930	THRUST BEARING							2	2
19	2	119266-02410	BUSH							1	1
20	1	26106-060122	BOLT M 6X 12 PLATED							2	2
21	1	119266-01200	STUD, CYL. HEAD							14	14
22	1	119265-01341	GASKET, CYL. HEAD							1	1
23	1	719260-02870	MAIN BEARING US=0.25							4	4

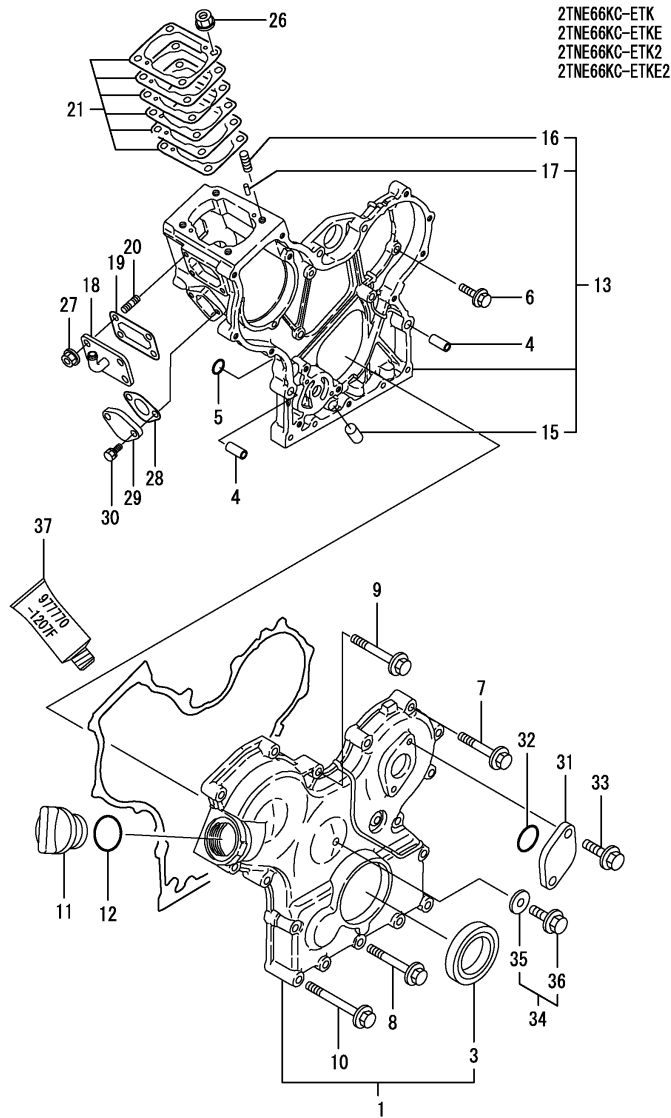
Remarks

(1) UNDER-SIZE(U.S=0.25)PART.

 N:Old $\xrightarrow{\text{Yes}}$ New, Q:Old $\xrightarrow{\text{No}}$ New, R:Old $\xrightarrow{\text{Yes}}$ New, S:Old $\xrightarrow{\text{No}}$ New, W:Add, Z:Discontinued, F:Interchangeable by set, K:Q'ty Change

(A)=2TNE66KC-ETK
(B)=2TNE66KCETKE
(C)=2TNE66KCETK2

(D)=2TNE66KETKE2
(E)=3TNE66KC-ETK
(F)=3TNE66KCETKU



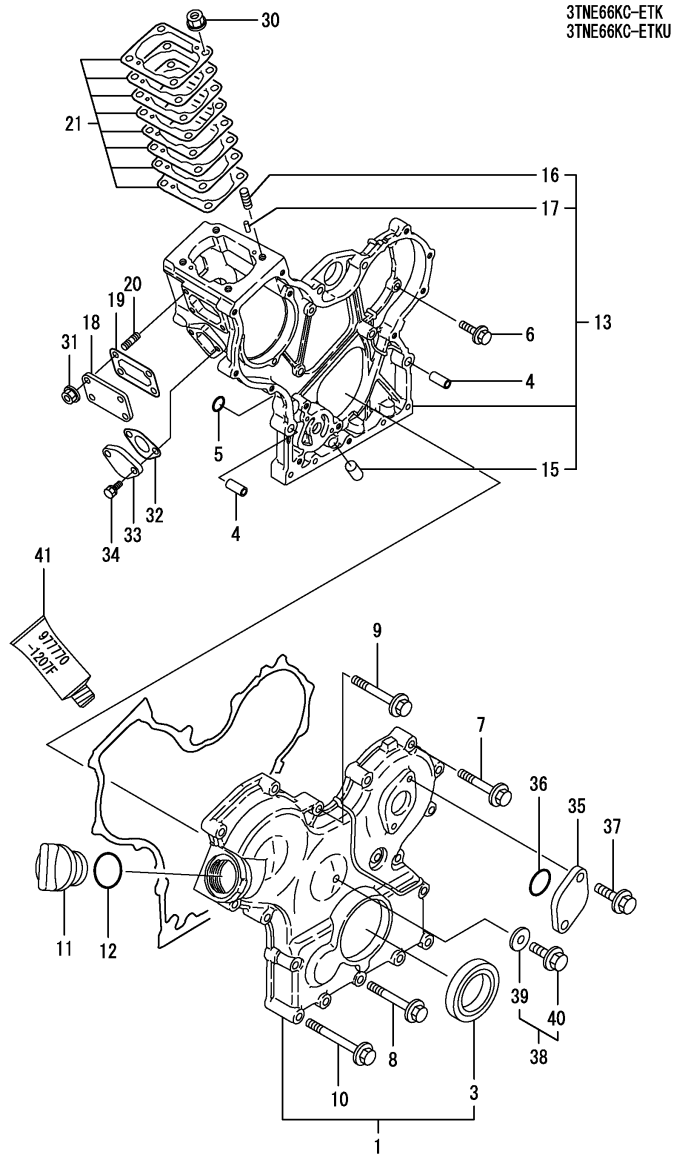
2TNE66KC-ETK
2TNE66KC-ETKE
2TNE66KC-ETK2
2TNE66KC-ETKE2

REF.	LEV.	PARTS NO.	DESCRIPTION	Q'TY						I	R
				(A)	(B)	(C)	(D)	(E)	(F)		
1	1	119209-01590	COVER ASSY,GEAR CASE	1	1	1	1				
I 1-1	1	119209-01580	COVER ASSY,GEAR CASE (C=EA13763)			1					N
3	2	119620-01800	SEAL, OIL	1	1	1	1				
I 3-1	2	119717-01800	SEAL, OIL (C=EA13763)			1					N
4	1	119660-01911	PIPE, KNOCK	4	4	4	4				
5	1	24311-000120	O-RING 1A P 12.0	2	2	2	2				
6	1	26106-060162	BOLT M 6X 16 PLATED	5	5	5	5				
7	1	26106-060302	BOLT M 6X 30 PLATED	5	5	5	5				
8	1	26106-060402	BOLT M 6X 40 PLATED	3	3	3	3				
9	1	26106-060502	BOLT M 6X 50 PLATED	4	4	4	4				
10	1	26106-060652	BOLT M 6X 65 PLATED	6	6	6	6				
11	1	124160-01751	COVER,FILLER	1	1	1	1				
12	1	24311-000320	O-RING 1A P-32.0	1	1	1	1				
13	1	119385-01490	CASE, GEAR	1	1	1	1				
15	2	119260-01510	PLUG	1	1	1	1				
16	2	121450-01560	STUD M 8X 22	4	4	4	4				
17	2	22351-040010	SPRING PIN 4X10	2	2	2	2				
18	1	119309-01550	COVER	1	1	1	1				
19	1	119660-01562	GASKET, (NON-ASB.)	1	1	1	1				
20	1	119660-01570	STUD M6X12	4	4	4	4				
21	1	119305-01950	SHIM PACK	1	1	1	1				
26	1	194990-22050	NUT W/WASHER 8	4	4	4	4				
27	1	26366-060002	NUT M 6	4	4	4	4				
28	1	121520-01851	GASKET, (NON-ASB.)	1	1	1	1				
29	1	121520-01860	COVER, BLIND	1	1	1	1				
30	1	26106-060162	BOLT M 6X 16 PLATED	2	2	2	2				
31	1	121023-01550	COVER, BLIND	1	1	1	1				
32	1	24341-000240	O-RING 1A S-24.0	1	1	1	1				
33	1	26106-060162	BOLT M 6X 16 PLATED	2	2	2	2				
34	1	119209-01550	FRANGE BOLT ASSY	1	1	1	1				
35	2	22190-060003	SEAL WASER 6	1	1	1	1				
36	2	26106-060162	BOLT M 6X 16 PLATED	1	1	1	1				
I 37	1	977770-1207F	GASKET.LIQUID	1	1	1	1				1

Remarks
(1) OPTIONAL PART.

(A)=2TNE66KC-ETK
(B)=2TNE66KCETKE
(C)=2TNE66KCETK2

(D)=2TNE66KETKE2
(E)=3TNE66KC-ETK
(F)=3TNE66KCETKU

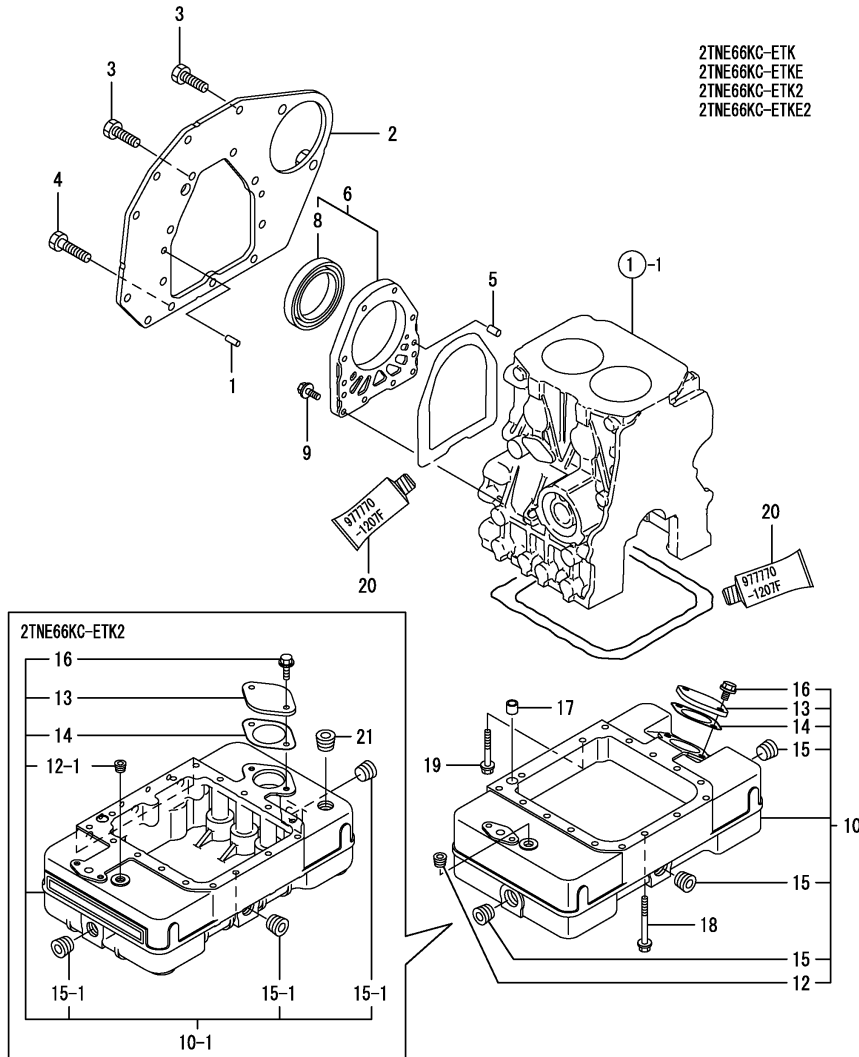


REF.	LEV.	PARTS NO.	DESCRIPTION	Q'TY						I	R
				(A)	(B)	(C)	(D)	(E)	(F)		
1	1	119209-01590	COVER ASSY,GEAR CASE					1	1		
I 1-1	1	119209-01580	COVER ASSY,GEAR CASE					1	1	N	
				(E=EA37759)				(F=EA23095)			
3	2	119620-01800	SEAL, OIL					1	1		
I 3-1	2	119717-01800	SEAL, OIL					1	1	N	
				(E=EA37759)				(F=EA23095)			
4	1	119660-01911	PIPE, KNOCK					4	4		
5	1	24311-000120	O-RING 1A P 12.0					2	2		
6	1	26106-060162	BOLT M 6X 16 PLATED					5	5		
7	1	26106-060302	BOLT M 6X 30 PLATED					5	5		
8	1	26106-060402	BOLT M 6X 40 PLATED					3	3		
9	1	26106-060502	BOLT M 6X 50 PLATED					4	4		
10	1	26106-060652	BOLT M 6X 65 PLATED					6	6		
11	1	124160-01751	COVER,FILLER					1	1		
12	1	24311-000320	O-RING 1A P-32.0					1	1		
13	1	119285-01490	HOUSING ASSY, GEAR					1	1		
15	2	119260-01510	PLUG					1	1		
16	2	121450-01560	STUD M 8X 22					4	4		
17	2	22351-040010	SPRING PIN 4X10					2	2		
18	1	119660-01551	COVER					1	1		
19	1	119660-01562	GASKET, (NON-ASB.)					1	1		
20	1	119660-01570	STUD M6X12					4	4		
21	1	119623-01950	SHIM PACK					1	1		
30	1	194990-22050	NUT W/WASHER 8					4	4		
31	1	26366-060002	NUT M 6					4	4		
32	1	121520-01851	GASKET, (NON-ASB.)					1	1		
33	1	121520-01860	COVER, BLIND					1	1		
34	1	26106-060162	BOLT M 6X 16 PLATED					2	2		
35	1	121023-01550	COVER, BLIND					1	1		
36	1	24341-000240	O-RING 1A S-24.0					1	1		
37	1	26106-060162	BOLT M 6X 16 PLATED					2	2		
38	1	119209-01550	FRANGE BOLT ASSY					1	1		
39	2	22190-060003	SEAL WASER 6					1	1		
40	2	26106-060162	BOLT M 6X 16 PLATED					1	1		
I 41	1	977770-1207F	GASKET.LIQUID					1	1	1	

Remarks
(1) OPTIONAL PART.

(A)=2TNE66KC-ETK
(B)=2TNE66KCETKE
(C)=2TNE66KCETK2

(D)=2TNE66KETKE2
(E)=3TNE66KC-ETK
(F)=3TNE66KCETKU

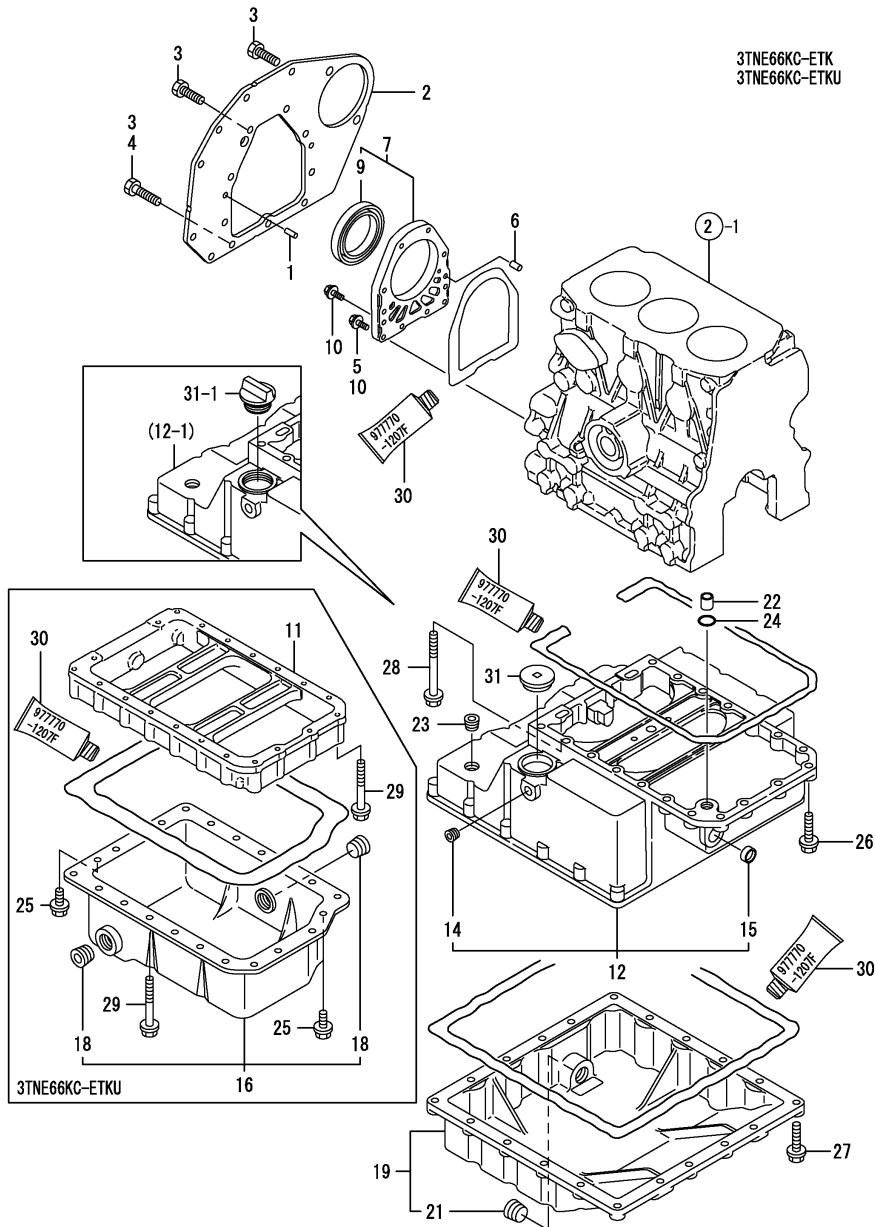


REF.	LEV.	PARTS NO.	DESCRIPTION	Q'TY						I	R
				(A)	(B)	(C)	(D)	(E)	(F)		
1	1	129100-01580	PARALLEL PIN 8X16	2	2	2	2				
2	1	119285-01601	FLANGE, MOUNTING	1	1	1	1				
3	1	26206-100202	BOLT M10X20	8	8	8	8				
4	1	26206-100252	BOLT M10X25	3	3	3	3				
5	1	119620-01620	PARALLEL PIN 6X10	2	2	2	2				
6	1	119660-01640	CASE ASSY, OIL SEAL	1	1	1	1				
8	2	124085-02220	SEAL, OIL	1	1	1	1				
9	1	26106-060222	BOLT M 6X 22 PLATED	10	10	10	10				
10	1	119385-01790	SUMP ASSY, OIL	1	1	1	1				
I	10-1	1	119385-01791	SUMP ASSY, OIL (C=E A11213)				1			N
12	2	119285-01730	PLUG NPT1/8	1	1	1	1				
I	12-1	2	119285-01731	PLUG NPT1/8 (C=EA14729)				1			N
13	2	121088-01740	FLANGE	1	1	1	1				
14	2	121088-01751	GASKET, FLANGE	1	1	1	1				
15	2	124085-01770	PLUG NPT1/2	3	3	3	3				
I	15-1	2	129224-01770	PLUG NPT1/2 (C=EA14729)				3			N
16	2	26106-060202	BOLT M 6X 20 PLATED	2	2	2	2				
17	1	119370-01740	PIPE, KNOCK	1	1	1	1				
18	1	26106-060602	BOLT M 6X 60 PLATED	12	12	12	12				
19	1	26106-060452	BOLT M 6X 45 PLATED	4	4	4	4				
I	20	1	977770-1207F	GASKET.LIQUID	1	1	1	1			1
I	21	1	23876-030000	PLUG PT3/8,SCREW (C=EA10740)				1			W

Remarks
(1) OPTIONAL PART.

(A)=2TNE66KC-ETK
(B)=2TNE66KCETKE
(C)=2TNE66KCETKU

(D)=2TNE66KETKE2
(E)=3TNE66KC-ETK
(F)=3TNE66KCETKU



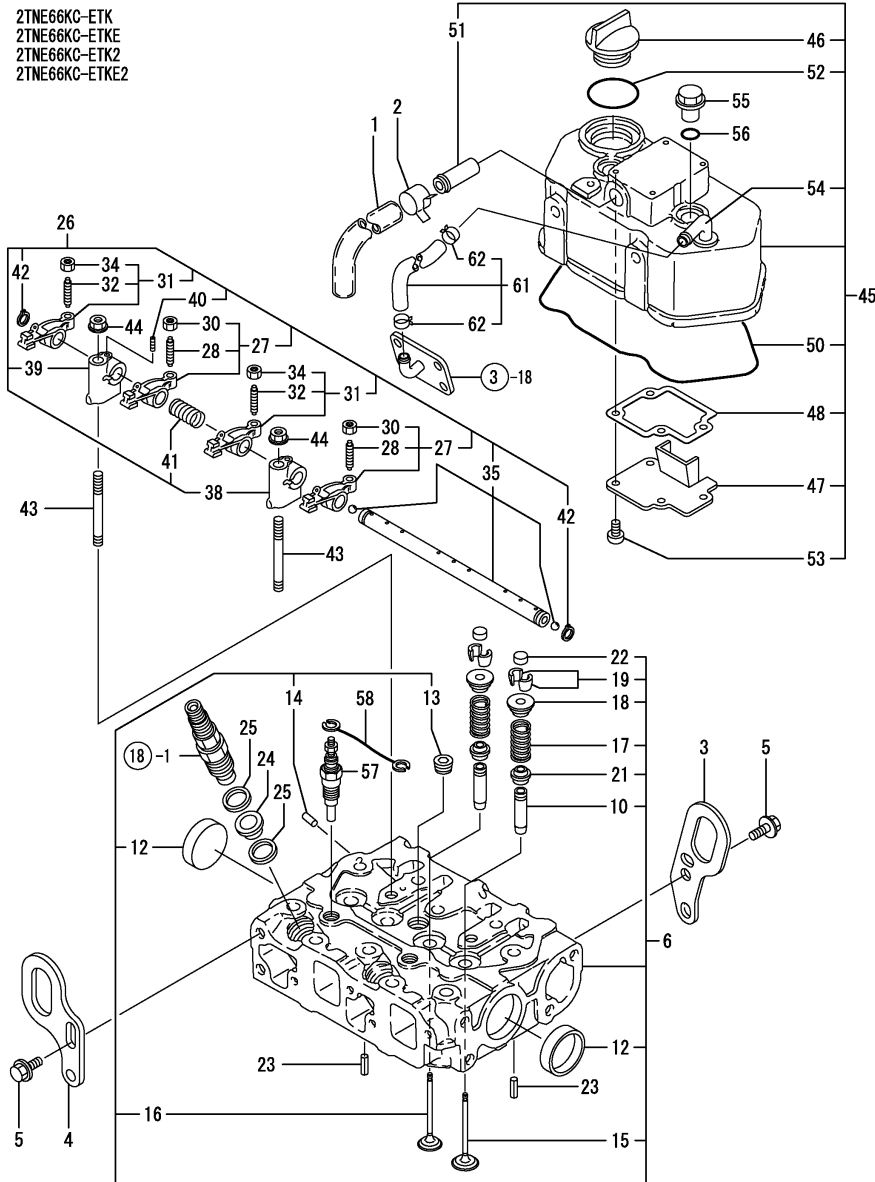
REF.	LEV.	PARTS NO.	DESCRIPTION	QTY						I	R
				(A)	(B)	(C)	(D)	(E)	(F)		
1	1	129100-01580	PARALLEL PIN 8X16					2	2		
2	1	119285-01600	FLANGE, MOUNTING					1	1		
3	1	26206-100202	BOLT M10X20					6	9		
4	1	26206-100252	BOLT M10X25					3			
5	1	119285-01580	BOLT 46X22					4			
6	1	119620-01620	PARALLEL PIN 6X10					2	2		
7	1	119660-01640	CASE ASSY, OIL SEAL					1	1		
9	2	124085-02220	SEAL, OIL					1	1		
10	1	26106-060222	BOLT M 6X 22 PLATED					6	10		
11	1	119454-01721	SPACER, OIL SUMP								1
12	1	119209-01790	OIL PAN ASSY					1			
I 12-1	1	119209-01791	SUMP ASSY, LUB.OIL					1			N
								(E=E A24395)			
14	2	119285-01730	PLUG NPT1/8					1			
I 14-1	2	119285-01731	PLUG NPT1/8					1			N
								(E=EA41671)			
15	2	27241-160000	PLUG 16					1			
16	1	119285-01741	PAN, LUB OIL								1
18	2	124085-01770	PLUG NPT1/2								2
I 18-1	2	129224-01770	PLUG NPT1/2								2
											N
								(F=EA23095)			
19	1	119209-01780	OILPAN,BOTTOM ASSY					1			
21	2	124085-01770	PLUG NPT1/2					1			
I 21-1	2	129224-01770	PLUG NPT1/2					1			N
								(E=EA41671)			
22	1	119370-01740	PIPE, KNOCK					1			
23	1	23876-030000	PLUG PT3/8,SCREW					1			
I 24	1	119624-32040	O-RING P 12.0					1			
25	1	26106-060102	BOLT 6X 10 PLATED								3
26	1	26106-060252	BOLT M 6X 25 PLATED					16			
27	1	26106-060252	BOLT M 6X 25 PLATED					20			
28	1	26106-060602	BOLT M 6X 60 PLATED					4			
29	1	26106-060452	BOLT M 6X 45 PLATED								20
I 30	1	977770-1207F	GASKET.LIQUID					1	1		1
31	1	119209-01810	PLUG					1			
I 31-1	1	129486-01850	PLUG					1			S
								(E=EA24346)			
I 31-2	1	129486-01851	PLUG, OIL PAN					1			N
								(E=EA24408)			

Remarks
(1) OPTIONAL PART.

(A)=2TNE66KC-ETK
(B)=2TNE66KCETKE
(C)=2TNE66KCETK2

(D)=2TNE66KETKE2
(E)=3TNE66KC-ETK
(F)=3TNE66KCETKU

2TNE66KC-ETK
2TNE66KC-ETKE
2TNE66KC-ETK2
2TNE66KC-ETKE2



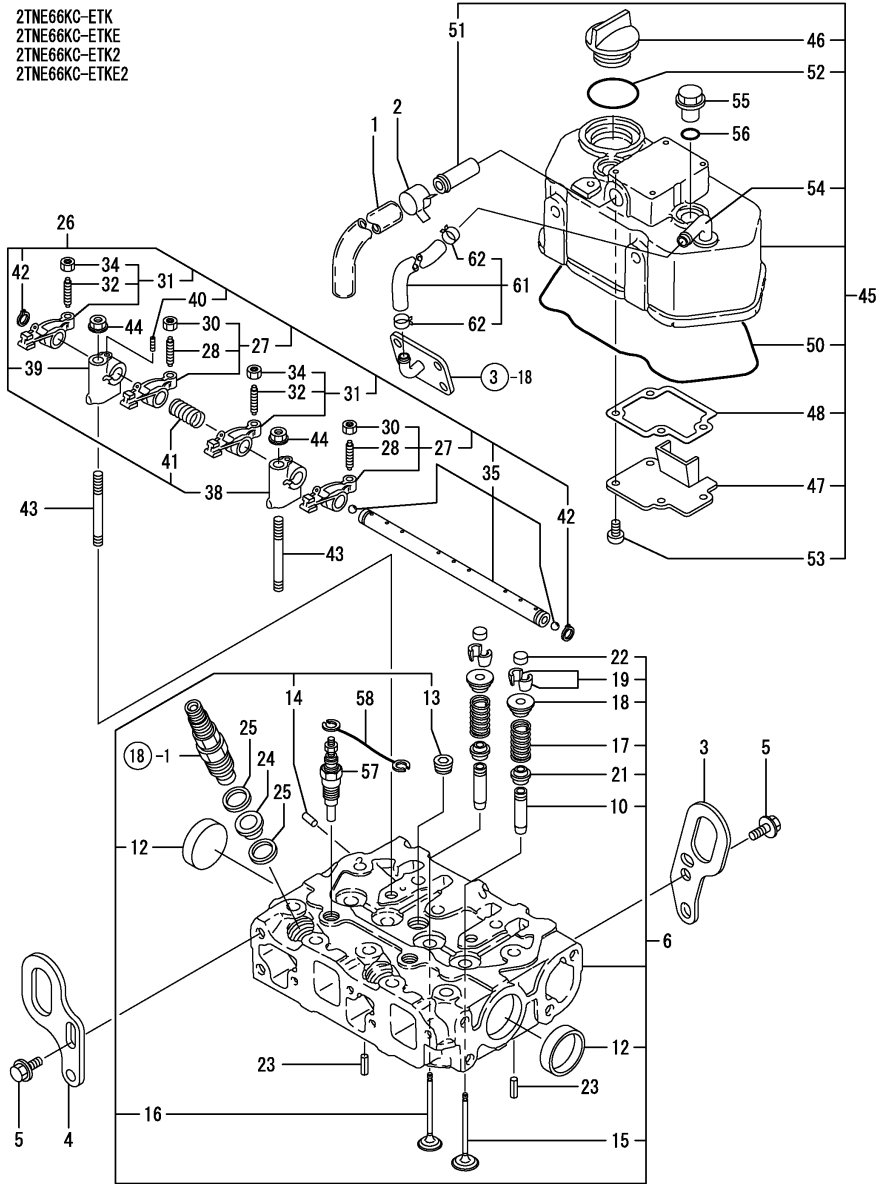
REF.	LEV.	PARTS NO.	DESCRIPTION	QTY						I	R
				(A)	(B)	(C)	(D)	(E)	(F)		
1	1	119285-03140	PIPE, BREATHER	1	1	1	1				
2	1	171008-03990	CLAMP 18.5	2	2	2	2				
3	1	119260-07900	LIFTER, ENGINE	1	1	1	1				
I	3-1	119626-07900	LIFTING, ENGINE (C=EA16509)				1				N
4	1	119285-07900	LIFTER, ENGINE	1	1	1	1				
5	1	26106-080142	BOLT 8X 14 PLATED	4	4	4	4				
6	1	719309-11100	HEAD ASSY, CYLINDER	1	1	1	1				
I	10	119260-11800	GUIDE, VALVE	4	4	4	4				1
I	12	119285-11990	PLUG 35	2	2	2	2				
I	13	23876-020000	PLUG PT1/4, SCREW	1	1	1	1				
I	14	27221-050080	PLUG 5X 8	1	1	1	1				
15	2	119260-11100	VALVE, SUCTION	2	2	2	2				
16	2	119260-11110	VALVE, EXHAUST	2	2	2	2				
17	2	114250-11120	SPRING, VALVE	4	4	4	4				
18	2	114250-11180	RETAINER, SPRING	4	4	4	4				
I	19	27310-055001	COTTER	4	4	4	4				
21	2	119260-11340	SEAL, VALVE STEM	4	4	4	4				
22	2	119260-11370	CAP, VALVE	4	4	4	4				
23	1	22351-060012	SPRING PIN 6X12	2	2	2	2				
24	1	119600-11450	PROTECTOR, NOZZLE	2	2	2	2				
25	1	119600-11460	GASKET, NOZZLE	4	4	4	4				
26	1	119305-11200	SUPPORT ASSY, ARM	1	1	1	1				
27	2	719260-11650	ARM ASSY, ROCKER	2	2	2	2				
28	3	105010-11230	SCREW, VALVE	2	2	2	2				
30	3	26856-060002	LOCK NUT 6	2	2	2	2				
31	2	719260-11660	ARM ASSY, ROCKER	2	2	2	2				
32	3	105010-11230	SCREW, VALVE	2	2	2	2				
34	3	26856-060002	LOCK NUT 6	2	2	2	2				
35	2	119305-11240	SHAFT ASSY, ARM	1	1	1	1				
38	2	119260-11260	SUPPORT, ROCKER ARM	1	1	1	1				
39	2	119265-11260	SUPPORT, ROCKER ARM	1	1	1	1				
40	2	119260-11270	SCREW	1	1	1	1				
41	2	119260-11280	SPRING	1	1	1	1				
42	2	22242-000100	CIRCLIP 10	2	2	2	2				
43	1	119620-11350	STUD	2	2	2	2				
44	1	26366-080002	NUT M 8	2	2	2	2				
I	44-1	26306-080002	NUT	2	2	2	2				N
		(A=EXXX)	(B=EXXX)	(C=EXXX)	(D=EXXX)						
45	1	119309-11331	BONNET ASSY	1	1	1	1				
46	2	124160-01751	COVER, FILLER	1	1	1	1				
47	2	119305-03020	PLATE	1	1	1	1				
48	2	119305-03031	GASKET, PLATE	1	1	1	1				
50	2	124097-11311	GASKET, BONNET	1	1	1	1				
51	2	124097-11390	JOINT	1	1	1	1				
52	2	24311-000320	O-RING 1A P-32.0	1	1	1	1				
53	2	22857-500100	SCREW 5X10, TAPPING	4	4	4	4				
54	2	119309-03150	JOINT	1	1	1	1				
55	1	124160-11360	KNOB	2	2	2	2				
56	1	24311-000120	O-RING 1A P 12.0	2	2	2	2				
57	1	129795-77800	PLUG, GLOW	2	2	2	2				

Remarks
(1) REPAIR PART.

(A)=2TNE66KC-ETK
(B)=2TNE66KCETKE
(C)=2TNE66KCETK2

(D)=2TNE66KETKE2
(E)=3TNE66KC-ETK
(F)=3TNE66KCETKU

2TNE66KC-ETK
2TNE66KC-ETKE
2TNE66KC-ETK2
2TNE66KC-ETKE2



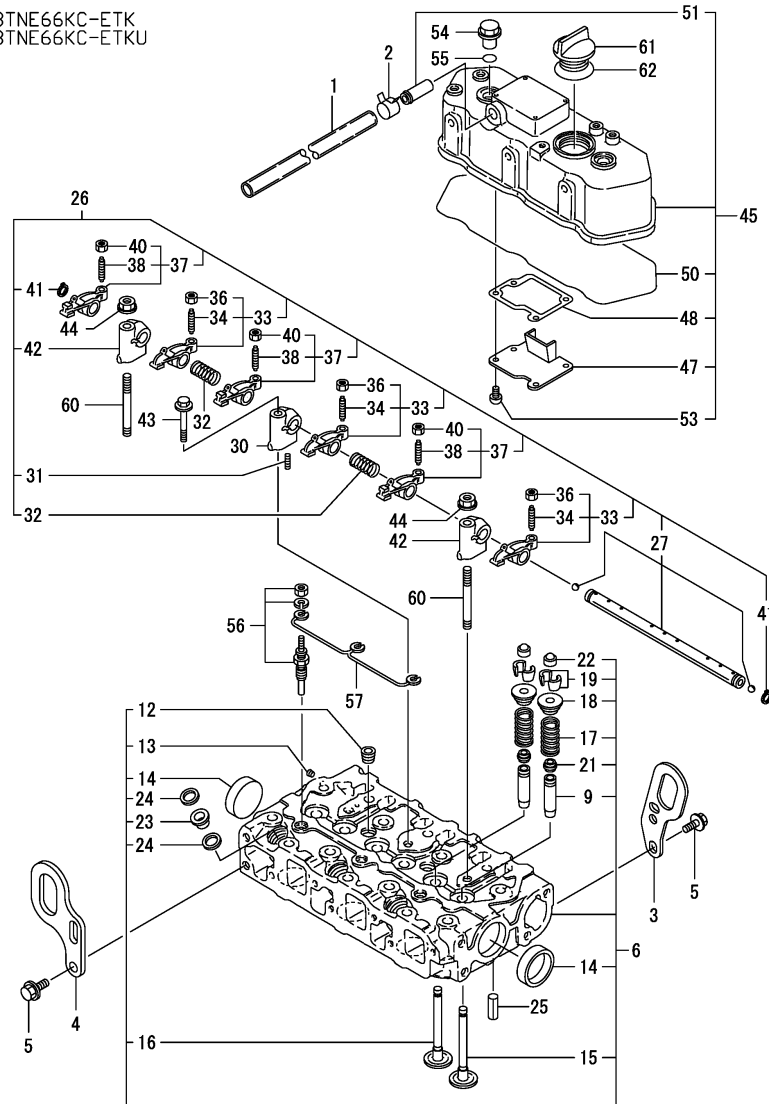
REF.	LEV.	PARTS NO.	DESCRIPTION	QTY						I	R
				(A)	(B)	(C)	(D)	(E)	(F)		
58	1	119305-77820	CONNECTOR, GLOW PLUG	1	1	1	1				
61	1	119520-03090	PIPE	1	1	1	1				
62	2	119520-03990	HOSE CLAMP	2	2	2	2				

Remarks
(1) REPAIR PART.

(A)=2TNE66KC-ETK
(B)=2TNE66KCETKE
(C)=2TNE66KCETK2

(D)=2TNE66KETKE2
(E)=3TNE66KC-ETK
(F)=3TNE66KCETKU

3TNE66KC-ETK
3TNE66KC-ETKU



REF.	LEV.	PARTS NO.	DESCRIPTION	Q'TY						I	R	
				(A)	(B)	(C)	(D)	(E)	(F)			
1	1	119285-03140	PIPE, BREATHER					1		1		
2	1	171008-03990	CLAMP 18.5					2		2		
3	1	119260-07900	LIFTER, ENGINE					1		1		
3-1	1	119626-07900	LIFTING, ENGINE					1				N
							(E=EA48616)					
4	1	119285-07900	LIFTER, ENGINE					1		1		
5	1	26106-080142	BOLT 8X 14 PLATED					4		4		
6	1	719209-11100	HEAD ASSY, CYLINDER					1		1		
9	2	119260-11800	GUIDE, VALVE					6		6		1
12	2	23876-030000	PLUG PT3/8,SCREW					2		2		
13	2	27221-050080	PLUG 5X 8					1		1		
14	2	119285-11990	PLUG 35					2		2		
15	2	119260-11100	VALVE, SUCTION					3		3		
16	2	119260-11110	VALVE, EXHAUST					3		3		
17	2	114250-11120	SPRING, VALVE					6		6		
18	2	114250-11180	RETAINER, SPRING					6		6		
19	2	27310-055001	COTTER					6		6		
21	2	119260-11340	SEAL, VALVE STEM					6		6		
22	2	119260-11370	CAP, VALVE					6		6		
23	2	119600-11450	PROTECTOR, NOZZLE					3		3		
24	2	119600-11460	GASKET, NOZZLE					6		6		
25	1	22351-060012	SPRING PIN 6X12					2		2		
26	1	119260-11200	SUPPORT ASSY, ARM					1		1		
27	2	119260-11240	SHAFT ASSY, ARM					1		1		
30	2	119260-11260	SUPPORT, ROCKER ARM					1		1		
31	2	119260-11270	SCREW					1		1		
32	2	119260-11280	SPRING					2		2		
33	2	719260-11650	ARM ASSY, ROCKER					3		3		
34	3	105010-11230	SCREW, VALVE					3		3		
36	3	26756-060002	LOCK NUT 6					3		3		
37	2	719260-11660	ARM ASSY, ROCKER					3		3		
38	3	105010-11230	SCREW, VALVE					3		3		
40	3	26756-060002	LOCK NUT 6					3		3		
41	2	22242-000100	CIRCLIP 10					2		2		
42	2	119265-11260	SUPPORT, ROCKER ARM					2		2		
43	1	26106-080452	BOLT M 8X 45 PLATED					1		1		
44	1	26366-080002	NUT M 8					2		2		
44-1	1	26306-080002	NUT					2		2		N
							(E=EXXX)			(F=EXXX)		
45	1	119209-11331	BONNET ASSY					1		1		
47	2	119260-03020	PLATE, SHELTER					1		1		
48	2	119260-03031	GASKET, PLATE					1		1		
50	2	124190-11311	GASKET, BONNET					1		1		
51	2	118400-03060	JOINT, BREATHER					1		1		
53	2	22857-500100	SCREW 5X10,TAPPING					4		4		
54	1	124160-11360	KNOB					2		2		
55	1	24311-000120	O-RING 1A P 12.0					2		2		
56	1	129795-77800	PLUG, GLOW					3		3		
57	1	119620-77820	CONNECTOR, GLOW PLUG					1		1		
60	1	119620-11350	STUD					2		2		
61	1	124160-01751	COVER, FILLER					1		1		

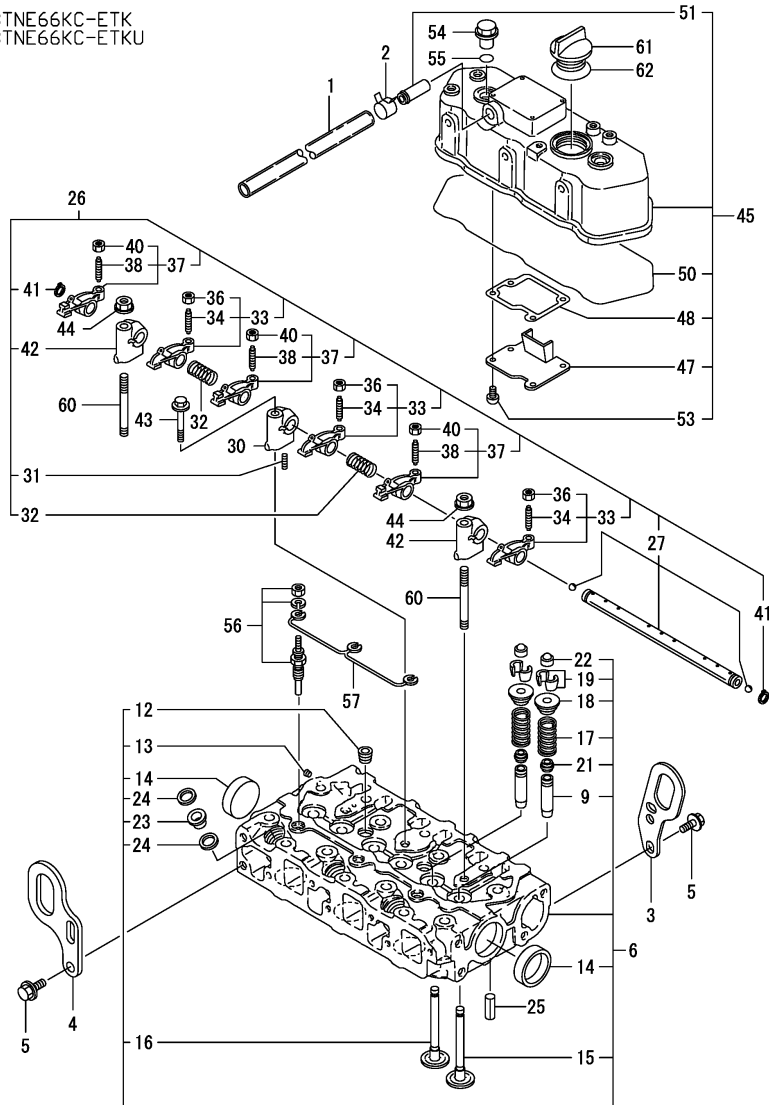
Remarks
(1) REPAIR PART.

(A)=2TNE66KC-ETK
 (B)=2TNE66KCETKE
 (C)=2TNE66KCETK2

(D)=2TNE66KETKE2
 (E)=3TNE66KC-ETK
 (F)=3TNE66KCETKU

REF.	LEV.	PARTS NO.	DESCRIPTION	Q'TY						I	R
				(A)	(B)	(C)	(D)	(E)	(F)		
62	1	24311-000320	O-RING 1A P-32.0					1			1

3TNE66KC-ETK
 3TNE66KC-ETKU

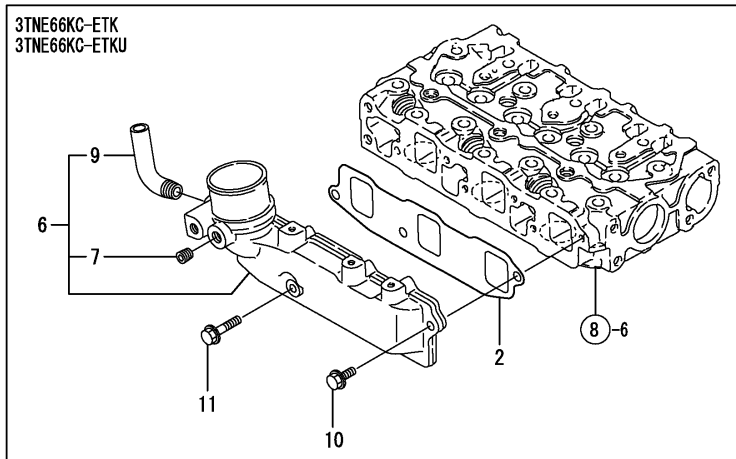
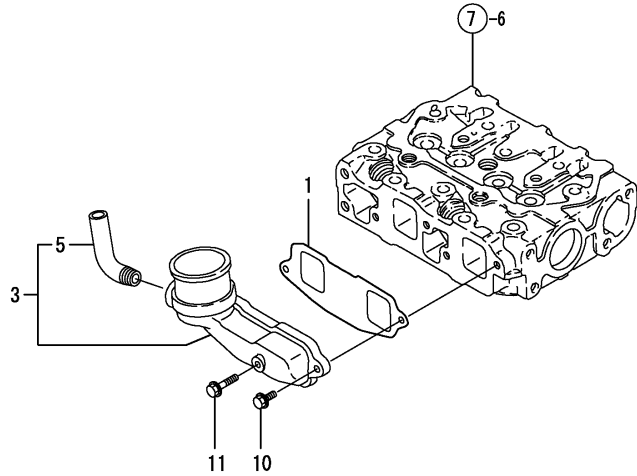


Remarks
 (1) REPAIR PART.

(A)=2TNE66KC-ETK
 (B)=2TNE66KCETKE
 (C)=2TNE66KCETK2

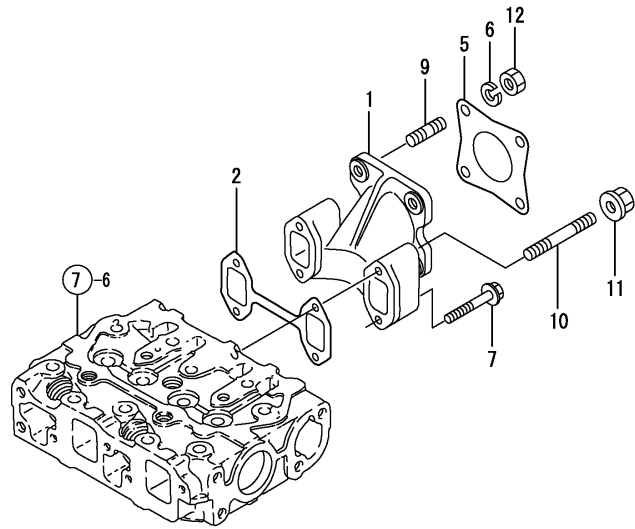
 (D)=2TNE66KETKE2
 (E)=3TNE66KC-ETK
 (F)=3TNE66KCETKU

REF.	LEV.	PARTS NO.	DESCRIPTION	Q'TY						I	R
				(A)	(B)	(C)	(D)	(E)	(F)		
1	1	119326-12111	GASKET	1	1	1	1				
2	1	119270-12110	GASKET, SUC.MANIFOLD					1	1		
3	1	119385-12730	MANIFOLD ASSY, SUC.	1	1	1	1				
5	2	121500-12790	JOINT PT1/4	1	1	1	1				
6	1	119285-12730	MANIFOLD ASSY, SUC.					1	1		
7	2	119285-01730	PLUG NPT1/8					1	1		
I	7-1	2	119285-01731	PLUG NPT1/8				1	1	N	
					(E=EXXX)			(F=EXXX)			
9	2	121500-12790	JOINT PT1/4					1	1		
10	1	26106-060162	BOLT M 6X 16 PLATED	2	2	2	2	2	2		
11	1	26106-060282	BOLT M 6X 28 PLATED	1	1	1	1	1	1		

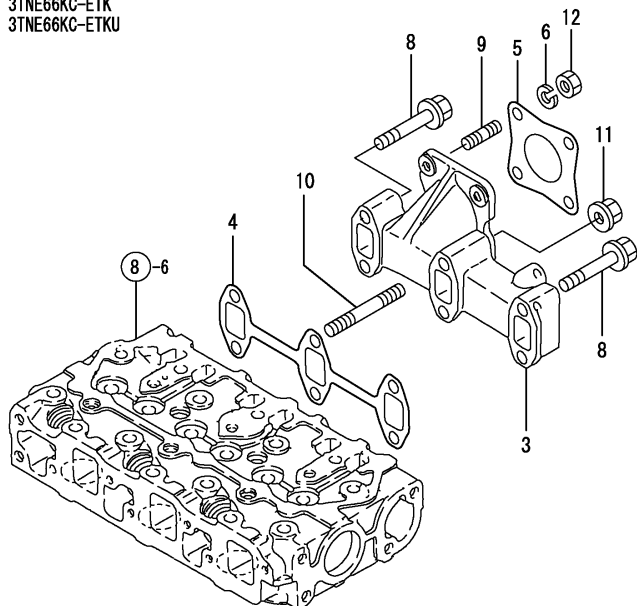


(A)=2TNE66KC-ETK
(B)=2TNE66KCETKE
(C)=2TNE66KCETK2

(D)=2TNE66KETKE2
(E)=3TNE66KC-ETK
(F)=3TNE66KCETKU



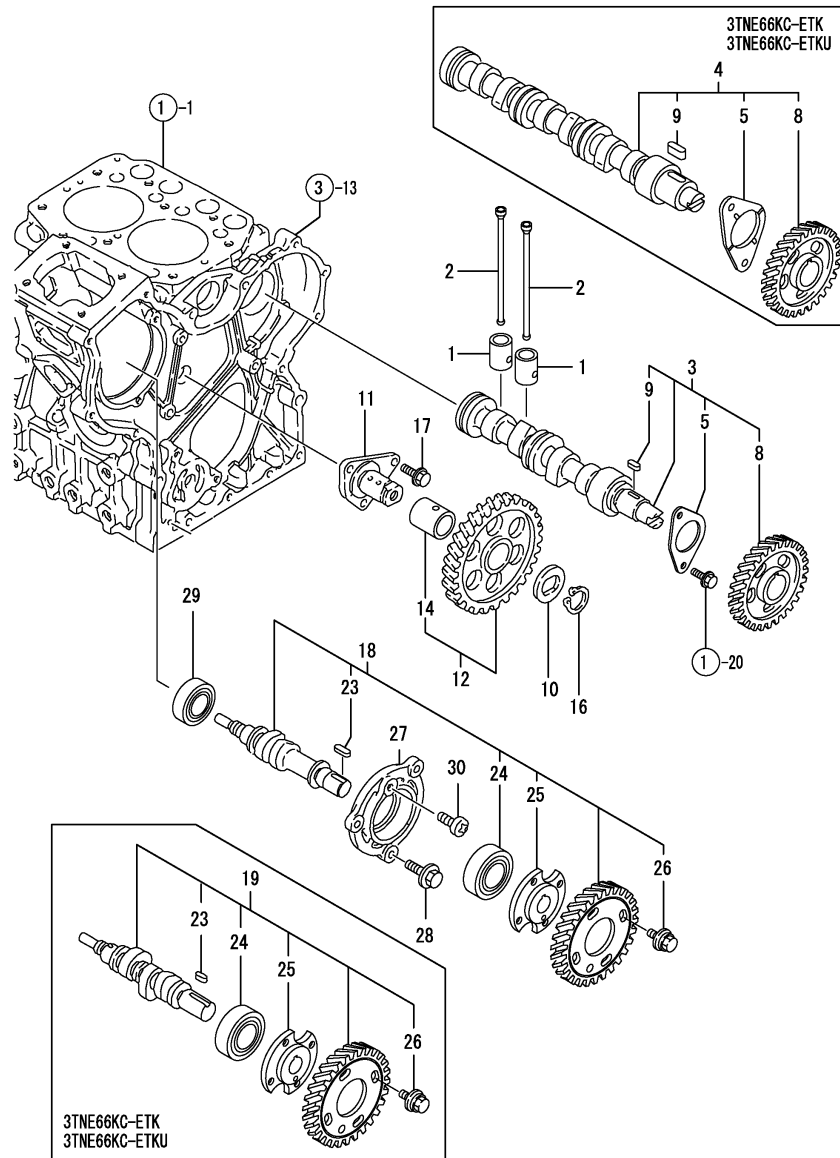
3TNE66KC-ETK
3TNE66KC-ETKU



REF.	LEV.	PARTS NO.	DESCRIPTION	Q'TY						I	R
				(A)	(B)	(C)	(D)	(E)	(F)		
1	1	119305-13100	MANIFOLD, EXHAUST	1		1					
2	1	119305-13110	GASKET, EXH.MANIFOLD	1	1	1	1				
3	1	119260-13100	MANIFOLD, EXHAUST						1	1	
4	1	119260-13110	GASKET, EXH.MANIFOLD						1	1	
5	1	121000-13201	GASKET, SILENCER	1		1		1	1		
6	1	22213-080000	SPRING WASHER 8	4		4		4	4		
7	1	26106-060402	BOLT M 6X 40 PLATED	2		2					
I 7-1	1	119265-13840	BOLT M 6X 40 PLATED (C=EXXX)			2					N
8	1	26106-060352	BOLT M 6X 35 PLATED						4	4	
I 8-1	1	119265-13830	BOLT M6X35 PLATED (E=EXXX)						4	4	N
9	1	26213-080222	STUD M 8X 22	4		4		4	4		
10	1	26216-060402	STUD M 6X 40 PLATED	2		2		2	2		
I 10-1	1	119265-13810	STUD M 6X 40 PLATED (C=EXXX)			2		2	2		N
11	1	26366-060002	NUT M 6	2		2		2	2		
I 11-1	1	119265-13800	NUT M 6 (C=EXXX)			2		2	2		N
12	1	26713-080002	NUT M 8	4		4		4	4		

(A)=2TNE66KC-ETK
(B)=2TNE66KCETKE
(C)=2TNE66KCETK2

(D)=2TNE66KETKE2
(E)=3TNE66KC-ETK
(F)=3TNE66KCETKU

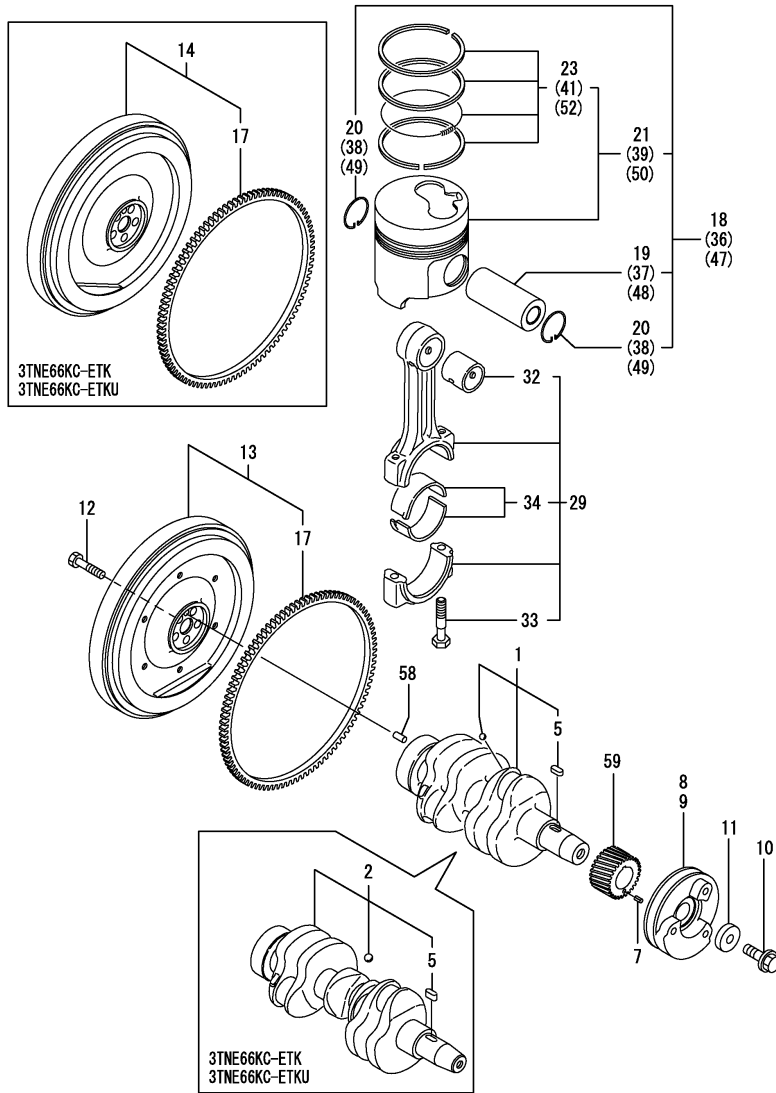


REF.	LEV.	PARTS NO.	DESCRIPTION	Q'TY						I	R
				(A)	(B)	(C)	(D)	(E)	(F)		
1	1	119260-14200	TAPPET	4	4	4	4	6	6		
2	1	119260-14400	ROD, PUSH	4	4	4	4	6	6		
3	1	119305-14580	CAMSHAFT ASSY	1	1	1	1				
4	1	119260-14580	CAMSHAFT ASSY					1	1		
5	2	119620-02450	BEARING, THRUST	1	1	1	1	1	1		
8	2	119260-14100	GEAR, CAMSHAFT	1	1	1	1	1	1		
9	2	22512-040120	KEY 4X 12	1	1	1	1	1	1		
10	1	119660-25022	RETAINER, IDLE GEAR	1	1	1	1	1	1		
11	1	119609-25050	SHAFT, IDLE GEAR	1	1	1	1	1	1		
12	1	119260-25100	GEAR W/BUSH, IDLE	1	1	1	1	1	1		
14	2	119620-25912	BUSH	1	1	1	1	1	1		1
16	1	22242-000200	CIRCLIP 20	1	1	1	1	1	1		
17	1	26106-060122	BOLT M 6X 12 PLATED	3	3	3	3	3	3		
18	1	119305-14210	CAM ASSY, PUMP	1	1	1	1				
19	1	119225-14210	CAM ASSY, F.I. PUMP					1	1		
23	2	22512-040120	KEY 4X 12	1	1	1	1	1	1		
24	2	24102-063034	BALL BEARING 6303U	1	1	1	1	1	1		
25	2	119660-25920	FLANGE	1	1	1	1	1	1		
26	2	119660-25930	THREAD, FI-P GEAR	4	4	4	4	4	4		
27	1	119660-01821	BEARING, FUEL CAM.	1	1	1	1	1	1		
28	1	26106-060162	BOLT M 6X 16 PLATED	3	3	3	3	3	3		
29	1	24101-062034	BALL BEARING	1	1	1	1	1	1		
30	1	26587-080102	SCREW M 8X 10	1	1	1	1	1	1		

Remarks
(1) REPAIR PART.

(A)=2TNE66KC-ETK
(B)=2TNE66KCETKE
(C)=2TNE66KCETKU

(D)=2TNE66KETKE2
(E)=3TNE66KC-ETK
(F)=3TNE66KCETKU

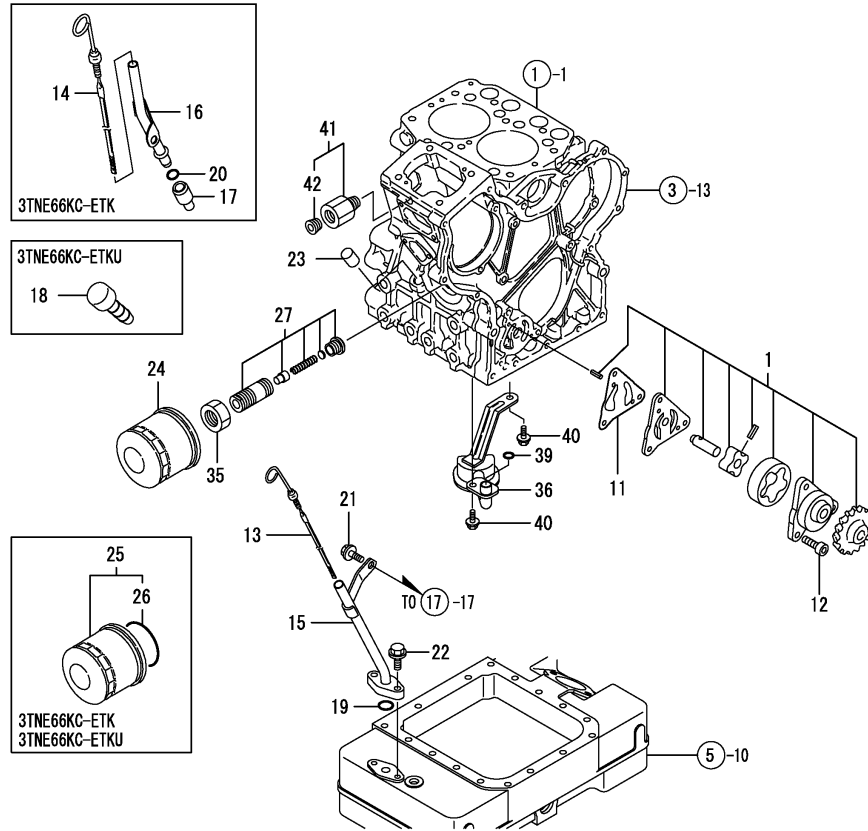


REF.	LEV.	PARTS NO.	DESCRIPTION	QTY						I	R
				(A)	(B)	(C)	(D)	(E)	(F)		
1	1	719309-21700	CRANKSHAFT W/NO GEAR	1	1	1	1				
2	1	719265-21700							1	1	
5	2	22512-040120	KEY 4X 12	1	1	1	1	1	1	1	
7	1	22351-030012	SPRING PIN 3X12	1	1	1	1				
8	1	119309-21650	V-PULLEY	1	1	1	1				
9	1	119209-21650	V-PULLEY ,CRANKSHAFT							1	1
10	1	119621-21680	BOLT M12X1.25,FLANGE	1	1	1	1	1	1	1	
11	1	119620-21941	WASHER	1	1	1	1	1	1	1	
12	1	119620-21500	BOLT, FLYWHEEL	5	5	5	5	5	5	5	
13	1	119309-21590	FLYWHEEL ASSY	1	1	1	1				
14	1	119209-21580	FLYWHEEL ASSY							1	1
17	2	124060-21600	GEAR, RING	1	1	1	1	1	1	1	
18	1	719209-22080	PISTON KIT (TK)	2	2	2	2	3	3		
I 18-1	1	719209-22081	PISTON KIT (TK) (C=EA14609)			2		3	3		N
						(E=EA43055)		(F=EA23095)			
19	2	119265-22300	PIN, PISTON	2	2	2	2	3	3		
20	2	22252-000200	CIRCLIP 20	4	4	4	4	6	6		
21	2	119209-22080	PISTON W/RING	2	2	2	2	3	3		
I 21-1	2	119209-22081	PISTON W/RING (C=EA14609)			2		3	3		N
						(E=EA43055)		(F=EA23095)			
23	3	119209-22500	RING SET	2	2	2	2	3	3		
29	1	119265-23100	ROD ASSY, CONNECTING	2	2	2	2	3	3		
32	2	119260-23910	BUSH, PISTON PIN	2	2	2	2	3	3		1
33	2	119265-23200	BOLT, ROD	4	4	4	4	6	6		
34	2	719260-23600	BEARING, CRANKPIN	2	2	2	2	3	3		
36	1	719209-22900	PISTON W/RING 0.25	2	2	2	2	3	3		2
I 36-1	1	719209-22901	PISTON W/RING 0.25 (C=EA14609)			2		3	3		N 2
						(E=EA43055)		(F=EA23095)			
37	2	119265-22300	PIN, PISTON	2	2	2	2	3	3		2
38	2	22252-000200	CIRCLIP 20	4	4	4	4	6	6		2
39	2	119209-22900	PISTON W/RING 0.25	2	2	2	2	3	3		2
I 39-1	2	119209-22901	PISTON W/RING 0.25 (C=EA14609)			2		3	3		N 2
						(E=EA43055)		(F=EA23095)			
41	3	119209-22950	RING SET O.S=0.25	2	2	2	2	3	3		2
47	1	719209-22910	PISYON KIT (TK) 0.50	2	2	2	2	3	3		3
I 47-1	1	719209-22911	PISYON KIT (TK) 0.50 (C=EA14609)			2		3	3		N 3
						(E=EA43055)		(F=EA23095)			
48	2	119265-22300	PIN, PISTON	2	2	2	2	3	3		3
49	2	22252-000200	CIRCLIP 20	4	4	4	4	6	6		3
50	2	119209-22910	PISTON W/RING 0.5	2	2	2	2	3	3		3
I 50-1	2	119209-22911	PISTON W/RING 0.5 (C=EA14609)			2		3	3		N 3
						(E=EA43055)		(F=EA23095)			
52	3	119209-22960	RING SET O.S=0.5	2	2	2	2	3	3		3
58	1	129100-01580	PARALLEL PIN 8X16	1	1	1	1	1	1		
59	1	119260-21200	GEAR, CRANKSHAFT	1	1	1	1	1	1		

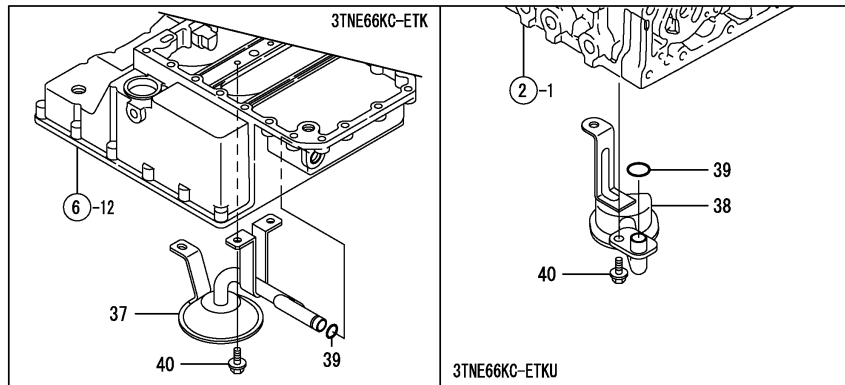
Remarks

- (1) REPAIR PART.
- (2) OVER-SIZE(O.S=0.25)PART.
- (3) OVER-SIZE(O.S=0.50)PART.

(A)=2TNE66KC-ETK
 (B)=2TNE66KCETKE
 (C)=2TNE66KCETK2

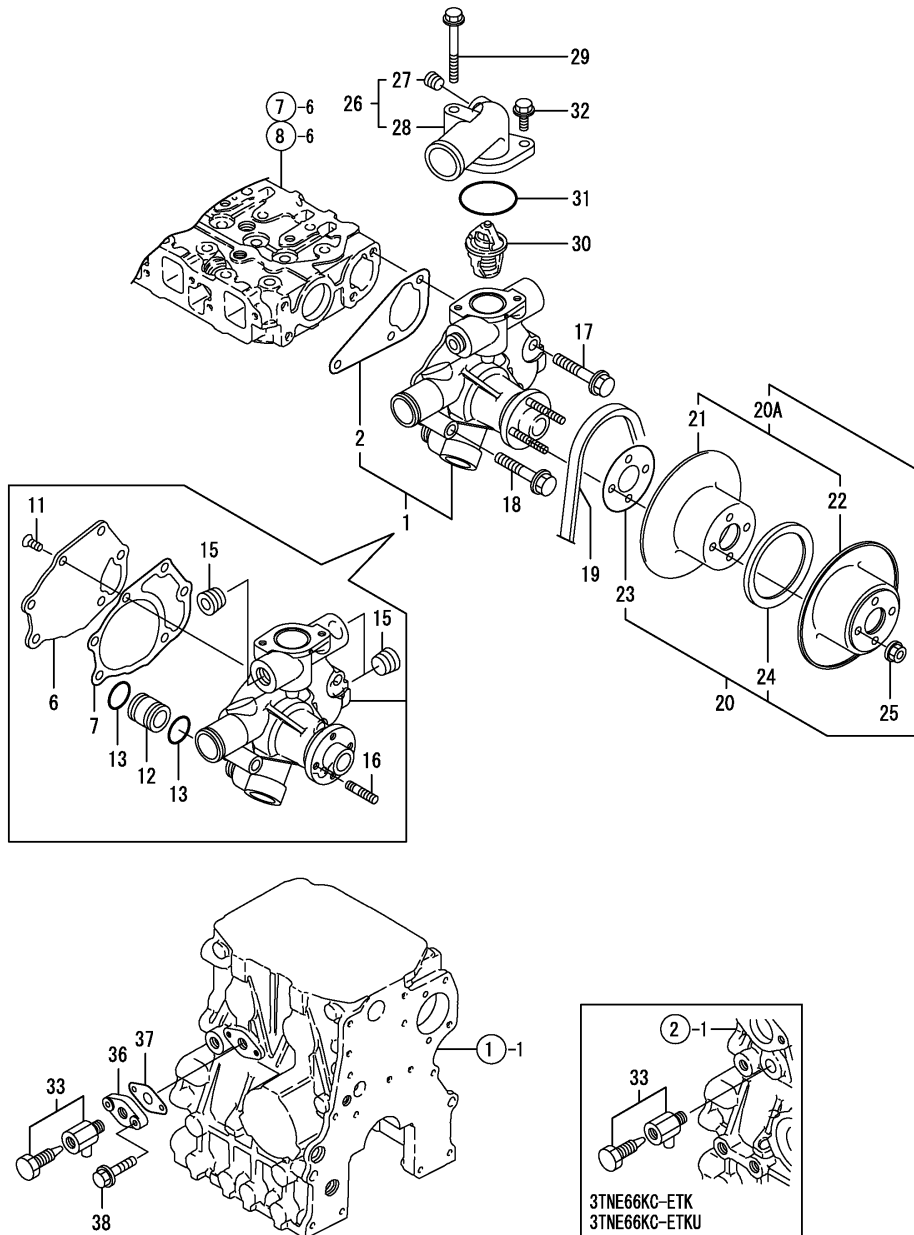
 (D)=2TNE66KETKE2
 (E)=3TNE66KC-ETK
 (F)=3TNE66KCETKU


REF.	LEV.	PARTS NO.	DESCRIPTION	Q'TY						I	R
				(A)	(B)	(C)	(D)	(E)	(F)		
1	1	119285-32000	PUMP ASSY, LUB. OIL	1	1	1	1	1	1		
11	1	119660-32020	GASKET, L.O.PUMP	1	1	1	1	1	1		
12	1	26450-060202	BOLT M 6X 20	3	3	3	3	3	3		
13	1	119385-34801	DIPSTICK	1	1	1	1				
14	1	119285-34821	DIPSTICK, LUB. OIL							1	
15	1	119385-34851	GUIDE, DIPSTICK	1	1	1	1				
16	1	119225-34810	GUIDE, DIPSTICK							1	
17	1	119260-34810	GUIDE, DIPSTICK							1	
18	1	124976-34850	CAP								1
19	1	24311-000150	O-RING 1A P-15.0	1	1	1	1				
20	1	24311-240100	O-RING 1A P-10A							1	
21	1	26106-060102	BOLT 6X 10 PLATED	1	1	1	1	1	1		
22	1	26106-060202	BOLT M 6X 20 PLATED	2	2	2	2				
23	1	27225-100140	PLUG 10X14	1	1	1	1				
24	1	119305-35151	FILTER ASSY, LUB.OIL	1	1	1	1				1
25	1	119660-35150	FILTER, LUB. OIL							1	1
26	2	124450-35110	O-RING, L.O.STRAINER							1	1
27	1	119225-35300	VALVE ASSY,OIL PRESS	1	1	1	1	1	1		
35	1	129150-35350	NUT	1	1	1	1	1	1		
36	1	119385-35090	PIPE ASSY, LO INTAKE	1	1	1	1				
37	1	119285-35090	PIPE, OIL INLET							1	
38	1	119260-35081	PIPE ASSY,OIL INTAKE								1
39	1	119209-35030	O-RING	1	1	1	1	1	1		
40	1	26106-060122	BOLT M 6X 12 PLATED	2	2	2	2	3	2		
40-1	1	26106-060102	BOLT 6X 10 PLATED (C=EXXX)			2					2 N
41	1	119285-39600	PLUG	1	1	1	1	1	1		
42	2	119285-01730	PLUG NPT1/8	1	1	1	1	1	1		
42-1	2	119285-01731	PLUG NPT1/8 (C=EXXX)			1				1	1 N
					(E=EXXX)					(F=EXXX)	


 Remarks
 (1) REPAIR PART.

(A)=2TNE66KC-ETK
(B)=2TNE66KCETKE
(C)=2TNE66KCETK2

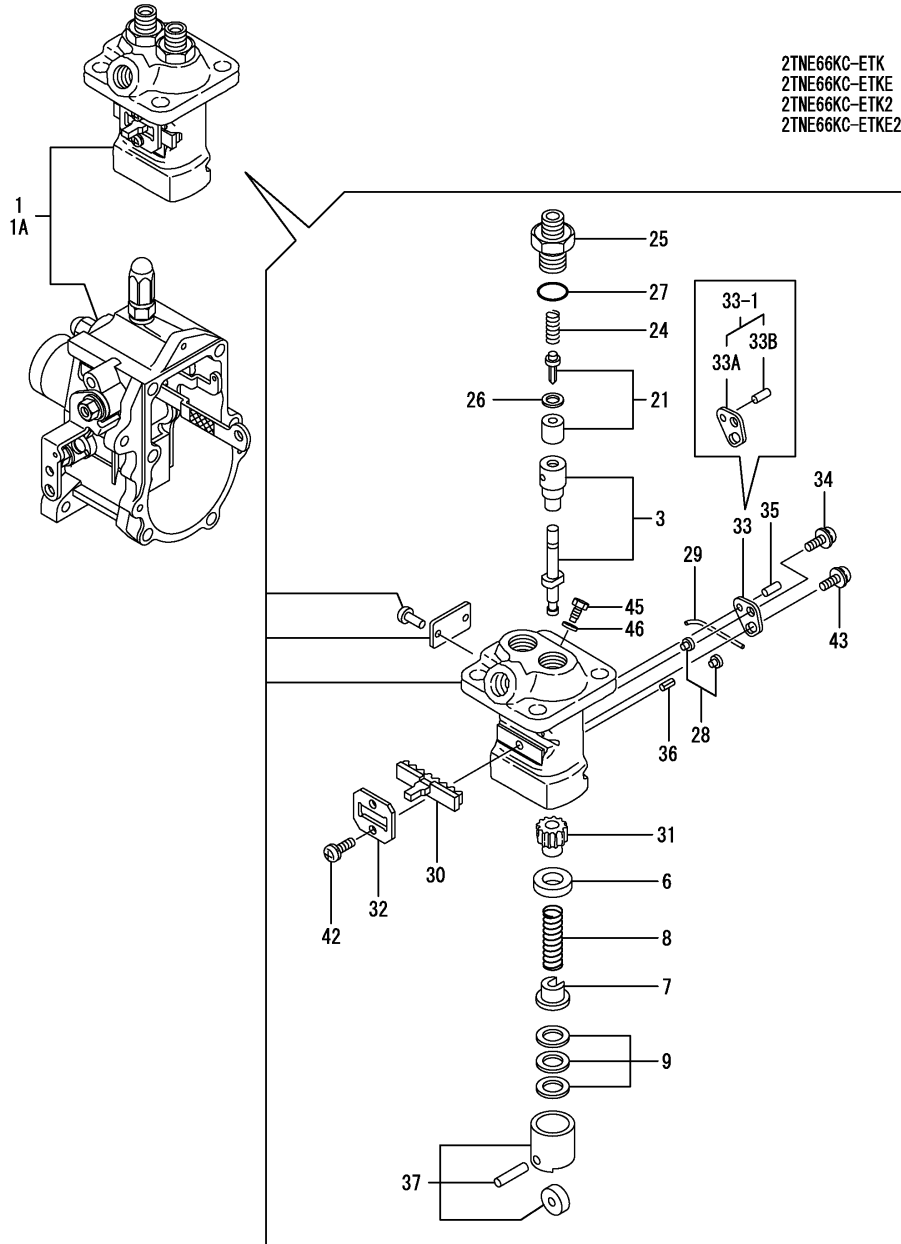
(D)=2TNE66KETKE2
(E)=3TNE66KC-ETK
(F)=3TNE66KCETKU



REF.	LEV.	PARTS NO.	DESCRIPTION	Q'TY						I	R
				(A)	(B)	(C)	(D)	(E)	(F)		
1	1	719209-42000	C.W.PUMP W/GASKET	1	1	1	1	1	1		
2	2	119260-42021	GASKET, C.W.	1	1	1	1	1	1		
I 6	2	119285-42120	PLATE	1	1	1	1	1	1		
I 7	2	119285-42051	GASKET, WATER PUMP	1	1	1	1	1	1		
I 11	2	26557-060122	SCREW M 6X 12,PAN HD	3	3	3	3	3	3		
I 12	2	119285-42270	ELBOW	1	1	1	1	1	1		
I 13	2	119209-42320	O-RING P21	2	2	2	2	2	2		
15	2	124085-11690	PLUG NPT 3/8	3	3	3	3	3	3		
16	2	26216-060202	STUD M 6X 20 PLATED	4	4	4	4	4	4		
17	1	26106-080402	BOLT M 8X 40 PLATED	1	1	1	1	1	1		
18	1	26106-080452	BOLT M 8X 45 PLATED	2	2	2	2	2	2		
19	1	119209-42290	V-BELT	1	1	1	1	1	1		
I 19-1	1	25152-002700	V-BELT A27			1		1			R
			(C=EA13700)								
			(E=EA37060)								
			(F=EA23095)								
20	1	119285-42300	V-PULLEY ASSY	1	1	1	1	1	1		
I 20A	2	124085-42300	V-PULLEY SET			1		1			W
			(C=EA10800)								
			(E=EA22524)								
			(F=EA22530)								
I 21	3	124085-42350	V-PULLEY, C.W. PUMP	1	1	1	1	1	1		
I 22	3	124085-42360	V-PULLEY, C.W. PUMP	1	1	1	1	1	1		
23	2	124085-42370	SHIM, V-PULLEY	4	4	4	4	4	4		
24	2	124085-42380	SPACER	1	1	1	1	1	1		
25	1	26366-060002	NUT M 6	4	4	4	4	4	4		
26	1	119209-49520	COVER	1	1	1	1	1	1		
27	2	119285-01730	PLUG NPT1/8	1	1	1	1	1	1		
I 27-1	2	119285-01731	PLUG NPT1/8			1		1			N
			(C=EXXX)								
			(E=EXXX)								
			(F=EXXX)								
28	2	119209-49530	COVER, THERMOSTAT	1	1	1	1	1	1		
I 28-1	2	119209-49531	COVER, THERMOSTAT			1		1			N
			(C=EA10980)								
			(E=EA23557)								
			(F=EA23095)								
29	1	26106-060552	BOLT M 6X 55 PLATED	1	1	1	1	1	1		
30	1	119289-49800	THERMOSTAT,82 DEG	1	1	1	1	1	1		
I 30-1	1	119289-49801	THERMOSTAT			1		1			N
			(C=EA10920)								
			(E=EA23557)								
			(F=EA23095)								
31	1	119209-42140	O_RING_COVER_THERMOS	1	1	1	1	1	1		
32	1	26106-060182	BOLT M 6X 18 PLATED	1	1	1	1	1	1		
33	1	119620-49290	COCK ASSY 1/4	1	1	1	1	1	1		
36	1	119385-49310	FLANGE, DRAIN	1	1	1	1				
37	1	119385-49331	GASKET, DRAIN	1	1	1	1				
38	1	26106-060252	BOLT M 6X 25 PLATED	2	2	2	2				

(A)=2TNE66KC-ETK
(B)=2TNE66KCETKE
(C)=2TNE66KCETK2

(D)=2TNE66KETKE2
(E)=3TNE66KC-ETK
(F)=3TNE66KCETKU



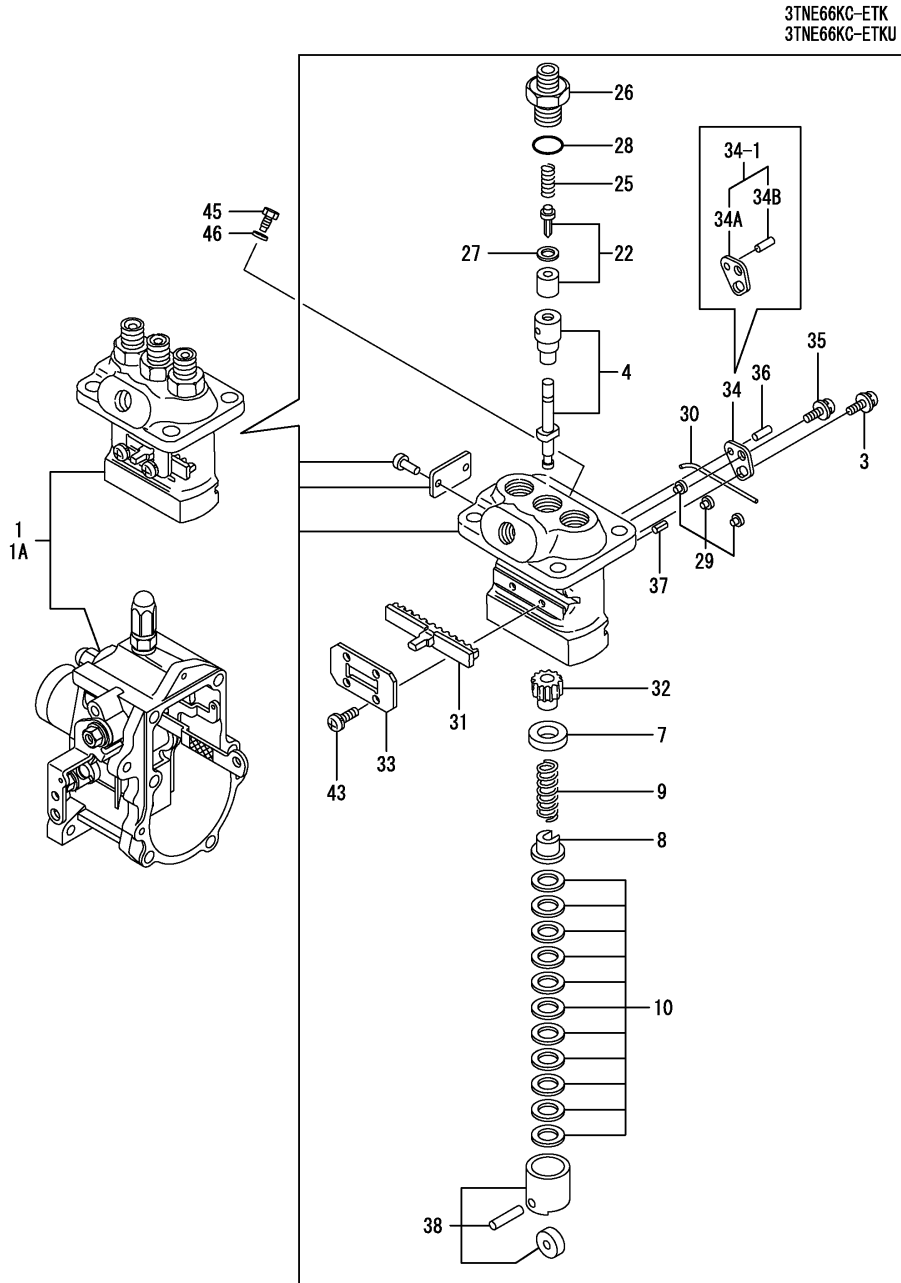
2TNE66KC-ETK
2TNE66KC-ETKE
2TNE66KC-ETK2
2TNE66KC-ETKE2

REF.	LEV.	PARTS NO.	DESCRIPTION	Q'TY						I	R
				(A)	(B)	(C)	(D)	(E)	(F)		
I	1	1 719309-51700 (A=*2001.01) (B=EA00006)	PUMP ASSY, F.INJECT.	1	1						W
I	1A	1 719309-51710	PUMP ASSY, F.INJECT. (C=EA10376) (D=EA00005)			1	1				W
	3	2 119225-51100	PLUNGER W/BARREL	2	2	2	2				
	6	2 119620-51170	RETAINER	2	2	2	2				
	7	2 119620-51180	RETAINER	2	2	2	2				
	8	2 119620-51190	SPRING, PLUNGER	2	2	2	2				
	9	2 119620-51250	SHIM PACK	2	2	2	2				
	21	2 119209-51300	VALVE, DELIVERY	2	2	2	2				
	24	2 105546-51330	SPRING, DELIV. VALVE	2	2	2	2				
	25	2 119620-51340	HOLDER, DELIV. VALVE	2	2	2	2				
	26	2 119620-51350	GASKET, DELIVERY	2	2	2	2				
	27	2 119620-51370	O-RING	2	2	2	2				
	28	2 119620-51450	GUIDE, PLUNGER	2	2	2	2				
	29	2 174307-51460	PIN	1	1	1	1				
	30	2 119305-51500	RACK	1	1	1	1				
	31	2 119620-51510	PINION	2	2	2	2				
	32	2 119305-51530	RETAINER, RACK	1	1	1	1				
	33	2 119620-51650	PLATE	1	1	1	1				
I	33-1	2 119620-51640	PLATE ASSY,ADJUSTING (C=EXXX)			1					N
I	33A	3 119620-51650	PLATE (C=EXXX)			1					W
I	33B	3 119620-51670	PIN (C=EXXX)			1					W
	34	2 119620-51660	SCREW	1	1	1	1				
I	35	2 119620-51670	PIN (C=EXXX)	1	1	1	1				Z
	36	2 119620-51680	PIN	1	1	1	1				
	37	2 119620-51700	TAPPET ASSY	2	2	2	2				
	42	2 26022-040082	SCREW M 4X 8	2	2	2	2				
	43	2 26033-040102	SCREW M 4X 10	1	1	1	1				
I	45	2 119266-51900	BOLT (C=EA10592)	1	1	1	1				Z
I	46	2 22190-080002	SEAL WASHER 8S (C=EA10592)	1	1	1	1				Z

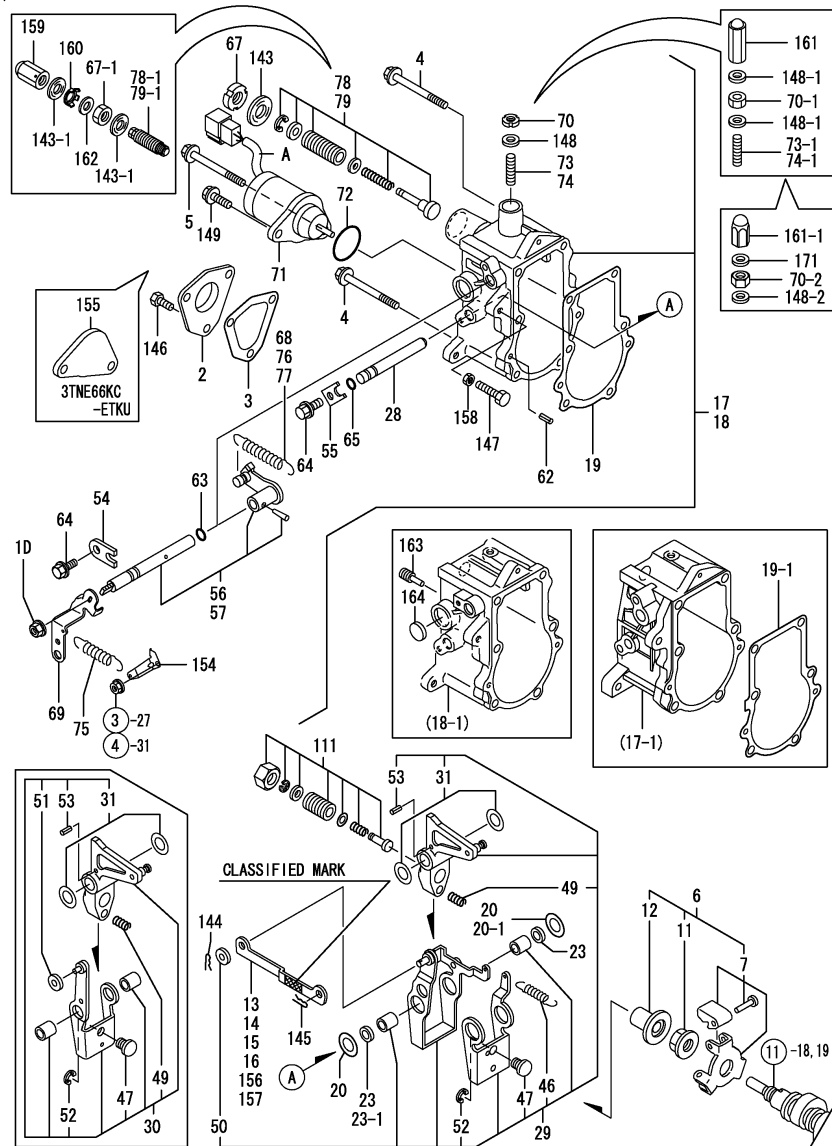
(A)=2TNE66KC-ETK
(B)=2TNE66KCETKE
(C)=2TNE66KCETK2

(D)=2TNE66KETKE2
(E)=3TNE66KC-ETK
(F)=3TNE66KCETKU

REF.	LEV.	PARTS NO.	DESCRIPTION	Q'TY						I	R	
				(A)	(B)	(C)	(D)	(E)	(F)			
I	1	1	719209-51700	PUMP ASSY, F.INJECT.					1			W
					(E=EA20778)							
I	1A	1	719209-51710	PUMP ASSY, F.INJECT.							1	W
					(F=EA21173)							
	3	2	26033-040102	SCREW M 4X 10					2		2	
	4	2	119225-51100	PLUNGER W/BARREL					3		3	
	7	2	119620-51170	RETAINER					3		3	
	8	2	119620-51180	RETAINER					3		3	
	9	2	119620-51190	SPRING, PLUNGER					3		3	
	10	2	119620-51250	SHIM PACK					3		3	
	22	2	119209-51300	VALVE, DELIVERY					3		3	
	25	2	105546-51330	SPRING, DELIV. VALVE					3		3	
	26	2	119620-51340	HOLDER, DELIV. VALVE					3		3	
	27	2	119620-51350	GASKET, DELIVERY					3		3	
	28	2	119620-51370	O-RING					3		3	
	29	2	119620-51450	GUIDE, PLUNGER					3		3	
	30	2	119620-51461	PIN					1		1	
	31	2	119660-51500	RACK					1		1	
	32	2	119620-51510	PINION					3		3	
	33	2	119660-51530	RETAINER, RACK					1		1	
	34	2	119620-51650	PLATE					2		2	
I	34-1	2	119620-51640	PLATE ASSY,ADJUSTING					2		2	N
					(E=EXXX)							
					(F=EXXX)							
I	34A	3	119620-51650	PLATE					2		2	W
					(E=EXXX)							
					(F=EXXX)							
I	34B	3	119620-51670	PIN					2		2	W
					(E=EXXX)							
					(F=EXXX)							
	35	2	119620-51660	SCREW					2		2	
I	36	2	119620-51670	PIN					2		2	Z
					(E=EXXX)							
					(F=EXXX)							
	37	2	119620-51680	PIN					1		1	
	38	2	119620-51700	TAPPET ASSY					3		3	
	43	2	26022-040082	SCREW M 4X 8					4		4	
I	45	1	119266-51900	BOLT					1		1	Z
					(E=EA21801)							
					(F=EA22530)							
I	46	1	22190-080002	SEAL WASHER 8S					1		1	Z
					(E=EA21801)							
					(F=EA22530)							



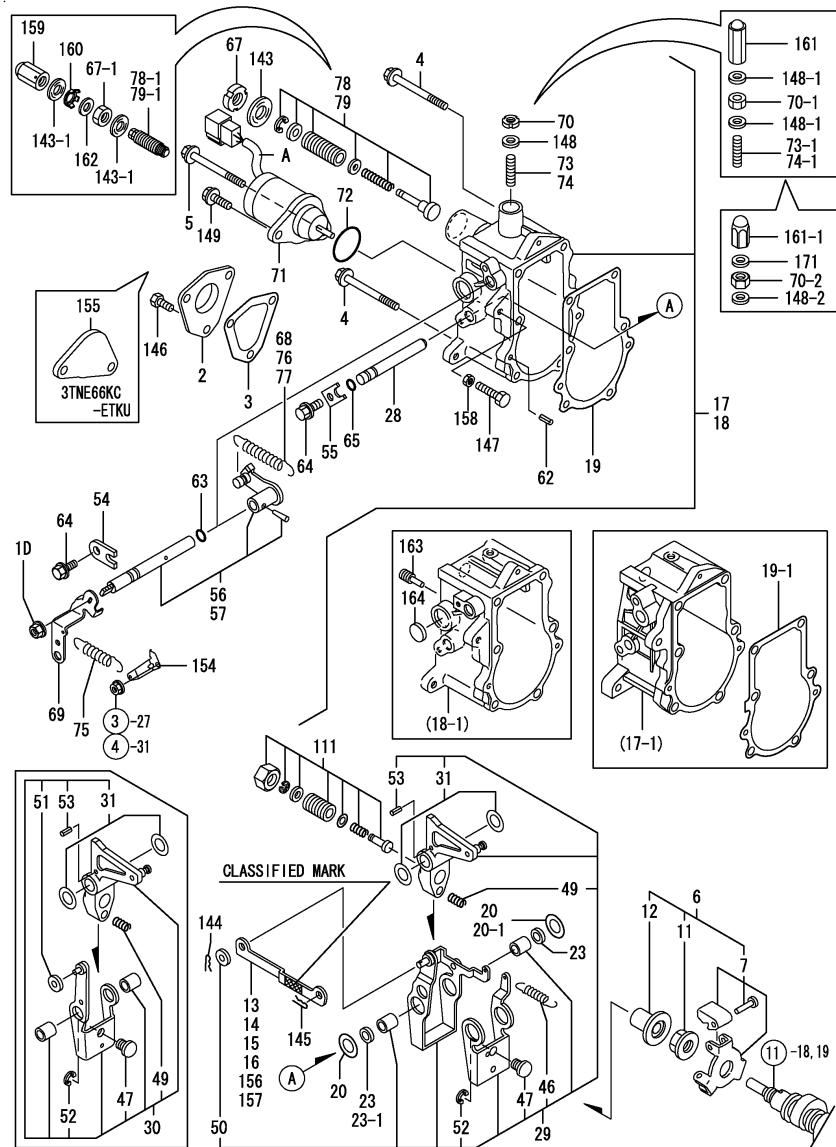
(A)=2TNE66KC-ETK
 (B)=2TNE66KCETKE
 (C)=2TNE66KCETK2

 (D)=2TNE66KETKE2
 (E)=3TNE66KC-ETK
 (F)=3TNE66KCETKU

Remarks

(1) SELECTIVE PARTS: CERTAIN THE CLASSIFICATION MARK, THEN PLACE YOUR ORDER(REFER TO ILLUSTRATION)
 (2) A(COLOR)=REF.NO.71-1 BROWN,71-2 BLUE.

REF.	LEV.	PARTS NO.	DESCRIPTION	Q'TY						I	R	
				(A)	(B)	(C)	(D)	(E)	(F)			
I	1D	1	194990-22050	NUT W/WASHER 8	1	1	1	1	1	1		
I	1D-1	1	26366-080002	NUT M 8			1		1			N
			(C=EA11037)				(E=EA24036)					
	2	1	119660-61060	COVER, GOVERNOR CASE	1	1	1	1	1	1		
	3	1	119660-61071	GASKET, (NON-ASB.)	1	1	1	1	1	1		
	4	1	26106-060702	BOLT M 6X 70 PLATED	5	5	5	5	5	5		
	5	1	26106-060952	BOLT M 6X 95 PLATED	1	1	1	1	1	1		
I	5-1	1	119620-01530	SOLENOID, BOLT			1		1	1		N
			(C=EA11168)				(E=EA24346)				(F=EA23095)	
	6	1	119600-61300	DRIVING SET, GOV.	1	1	1	1	1	1		
	7	2	119600-61400	WEIGHT ASSY, GOV.	1	1	1	1	1	1		
	11	2	119660-61300	NUT, GOVERNOR WEIGHT	1	1	1	1	1	1		
	12	2	119660-61341	SLEEVE, GOVERNOR	1	1	1	1	1	1		
	13	1	119660-61121	LINK L=88.8(NO COLOR)	1	1	1	1	1	1		1
I	13-1	1	119660-61122	LINK L=88.8(NO COLOR)			1		1			R 1
			(C=EA12749)				(E=EA32955)					
	14	1	119285-66120	LINK								1 1
I	14-1	1	119285-66121	LINK								1 R 1
												(F=EA23094)
	15	1	119660-61140	LINK L=88.6(WHITE)	1	1	1	1	1	1		1
I	15-1	1	119660-61141	LINK L=88.6(WHITE)			1		1			R 1
			(C=EA12749)				(E=EA32955)					
	16	1	119285-66130	LINK								1 1
I	16-1	1	119285-61131	LINK								1 R 1
												(F=EA23094)
	17	1	119621-61210	CASE,GOVERNOR	1	1	1	1	1	1		
I	17-1	1	119285-61210	CASE ASSY, GOVERNOR	1	1	1	1	1	1		S
			(A=*2001.01) (B=EA00006) (C=EA10376) (D=EA00005) (E=EA20778)									
	18	1	119285-61220	GOVERNOR CASE ASSY								1
I	18-1	1	119285-61200	GOVERNOR CASE ASSY								1 S
												(F=EA21173)
	19	2	119660-61052	GASKET, (NON-ASB.)	1	1	1	1	1	1		
I	19-1	2	119660-61053	GASKET, (NON-ASB.)			1		1			S
			(C=EA12749)				(E=EA32955)					
I	19-2	2	119660-61054	GASKET, (NON-ASB.)			1		1			R
			(C=EA15213)				(E=EA44104)					
	20	2	119660-61460	SHIM SET	1	1	1	1	1	1		
I	20-1	2	129156-61500	SHIM T=0.5			1		1			N
			(C=EA12749)				(E=EA32955)					
	23	2	129155-61480	SPACER ASSY	2	2	2	2	2	2		
I	23-1	2	119632-61500	SHIM SET			1		1			N
			(C=EA12749)				(E=EA32955)					
	28	2	119660-61590	SHAFT	1	1	1	1	1	1		
	29	2	119285-61510	LEVER ASSY, GOVERNOR	1	1	1	1	1	1		
	30	2	119285-61500	LEVER ASSY, GOVERNOR								1
	31	3	174307-51700	SHIM SET	2	2	2	2	2	2		
I	46	3	119232-61540	SPRING, LEVER	1	1	1	1	1	1		
	47	3	119600-61541	SHIFTER,P.T.O.	1	1	1	1	1	1		
	49	3	119600-61650	SPRING, STARTING	1	1	1	1	1	1		
	50	3	22117-040000	WASHER 4	1	1	1	1	1	1		
	51	3	22117-040000	WASHER 4								2

(A)=2TNE66KC-ETK
 (B)=2TNE66KCETKE
 (C)=2TNE66KCETK2

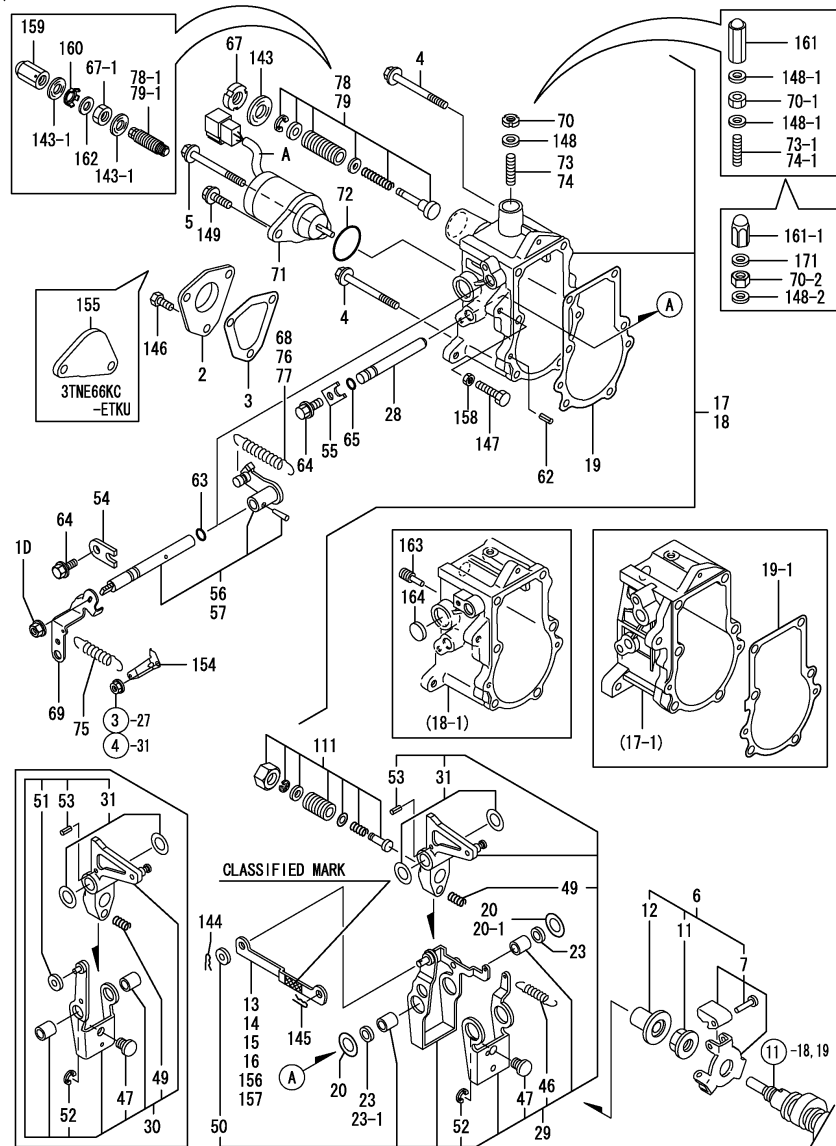
 (D)=2TNE66KETKE2
 (E)=3TNE66KC-ETK
 (F)=3TNE66KCETKU

Remarks

(1) SELECTIVE PARTS: CERTAIN THE CLASSIFICATION MARK, THEN PLACE YOUR ORDER(REFER TO ILLUSTRATION)
 (2) A(COLOR)=REF.NO.71-1 BROWN,71-2 BLUE.

REF.	LEV.	PARTS NO.	DESCRIPTION	Q'TY						I	R	
				(A)	(B)	(C)	(D)	(E)	(F)			
52	3	22272-000040	CIRCLIP E- 4	1	1	1	1	1	1			
53	3	22351-030014	SPRING PIN 3X14	1	1	1	1	1	1			
54	2	119600-61900	RETAINER, SHAFT	1	1	1	1	1	1			
55	2	119660-61901	RETAINER, SHAFT	1	1	1	1	1	1			
56	2	119285-66080	SHAFT ASSY,REGULATOR	1	1	1	1	1				
57	2	119285-66090	SHAFT ASSY,REGULATOR								1	
62	2	22351-040010	SPRING PIN 4X10	2	2	2	2	2	2			
63	2	24341-000070	O-RING 1A S-7.0	1	1	1	1	1	1			
I 64	2	26106-060102	BOLT 6X 10 PLATED	2	2	2	2	2	2			
65	2	129155-51280	O-RING S6	1	1	1	1	1	1			
67	1	119685-61940	CARB NUT(FO-LIMIT	1	1	1	1	1	1			
I 67-1	1	26776-120002	LOCK NUT M12 PLATED	1	1	1	1	1	1		S	
		(A=*2001.01)	(B=EA00006)	(C=EA10376)	(D=EA00005)	(E=EA32955)	(F=EA22530)					
I 67-2	1	26736-120002	NUT M12					1	1	1	N	
			(C=EA10800)			(E=EA22524)	(F=EA22530)					
68	1	119600-66020	SPRING, REGULATOR	1	1							
69	1	119640-66051	HANDLE, REGULATOR	1	1	1	1	1	1			
70	1	119685-61950	CARB NUT(HI-IDLE	1	1	1	1	1	1			
I 70-1	1	124550-66370	LOCK NUT M 6	1	1	1	1	1	1		S	
		(A=*2001.01)	(B=EA00006)	(C=EA10376)	(D=EA00005)	(E=EA20778)	(F=EA21173)					
I 70-2	1	26857-060002	NUT					1	1	1	N	
			(C=EA11168)			(E=EA24346)	(F=EA23095)					
I 71	1	129486-77952	SOLENOID, STOP	1	1	1	1	1				
I 71-1	1	129486-77953	SOLENOID, STOP					1	1		N	
			(C=EA10800)			(E=EA23058)						
I 71-2	1	129486-77954	SOLENOID, STOP					1	1		S 2	
			(C=EA16237)			(E=EA23095)						
72	1	24341-000280	O-RING 1A S-28.0	1	1	1	1	1	1			
73	1	121575-66800	SCREW, ADJUST	1	1				1	1		
I 73-1	1	121575-66830	SCREW, ADJUST	1	1				1	1	S	
		(A=*2001.01)	(B=EA00006)			(E=EA20778)	(F=EA21173)					
74	1	119988-61460	BOLT, REVOL. LIMIT					1	1			
I 74-1	1	121575-66800	SCREW, ADJUST					1	1		S	
			(C=EA10376)	(D=EA00005)								
75	1	119840-61870	SPRING	1	1	1	1	1	1			
76	1	119245-66010	SPRING, REGULATOR						1	1		
77	1	119621-66021	SPRING, REGULATOR					1	1			
78	1	119621-66500	LIMITTER, FUEL OIL	1	1	1	1					
I 78-1	1	119600-66530	TORQUE SPRING ASSY	1	1	1	1				S	
		(A=*2001.01)	(B=EA00006)	(C=EA10376)	(D=EA00005)							
79	1	119489-66500	FUEL LIMITR(CARB ASY							1	1	
I 79-1	1	119629-66510	TORQUE SPRING ASSY							1	1	S
						(E=EA20778)	(F=EA21173)					
111	1	119654-66700	ANGLEIGH ASSY	1	1	1	1	1	1			
143	1	22190-120002	SEAL WASHER 12	1	1	1	1	1	1			
I 143-1	1	22190-120002	SEAL WASHER 12	2	2	2	2	2	2		K	
		(A=*2001.01)	(B=EA00006)	(C=EA10376)	(D=EA00005)	(E=EA20778)	(F=EA21173)					
144	1	22360-040000	SNAP PIN 4	1	1	1	1	1	1			
145	1	22360-060000	SNAP PIN 6	1	1	1	1	1	1			
146	1	26116-050102	BOLT M 5X 10 PLATED	3	3	3	3	3	3			
I 146-1	1	26106-050102	BOLT M 5X 10 PLATED					3	3	3	N	

(A)=2TNE66KC-ETK
(B)=2TNE66KCETKE
(C)=2TNE66KCETK2

(D)=2TNE66KETKE2
(E)=3TNE66KC-ETK
(F)=3TNE66KCETKU

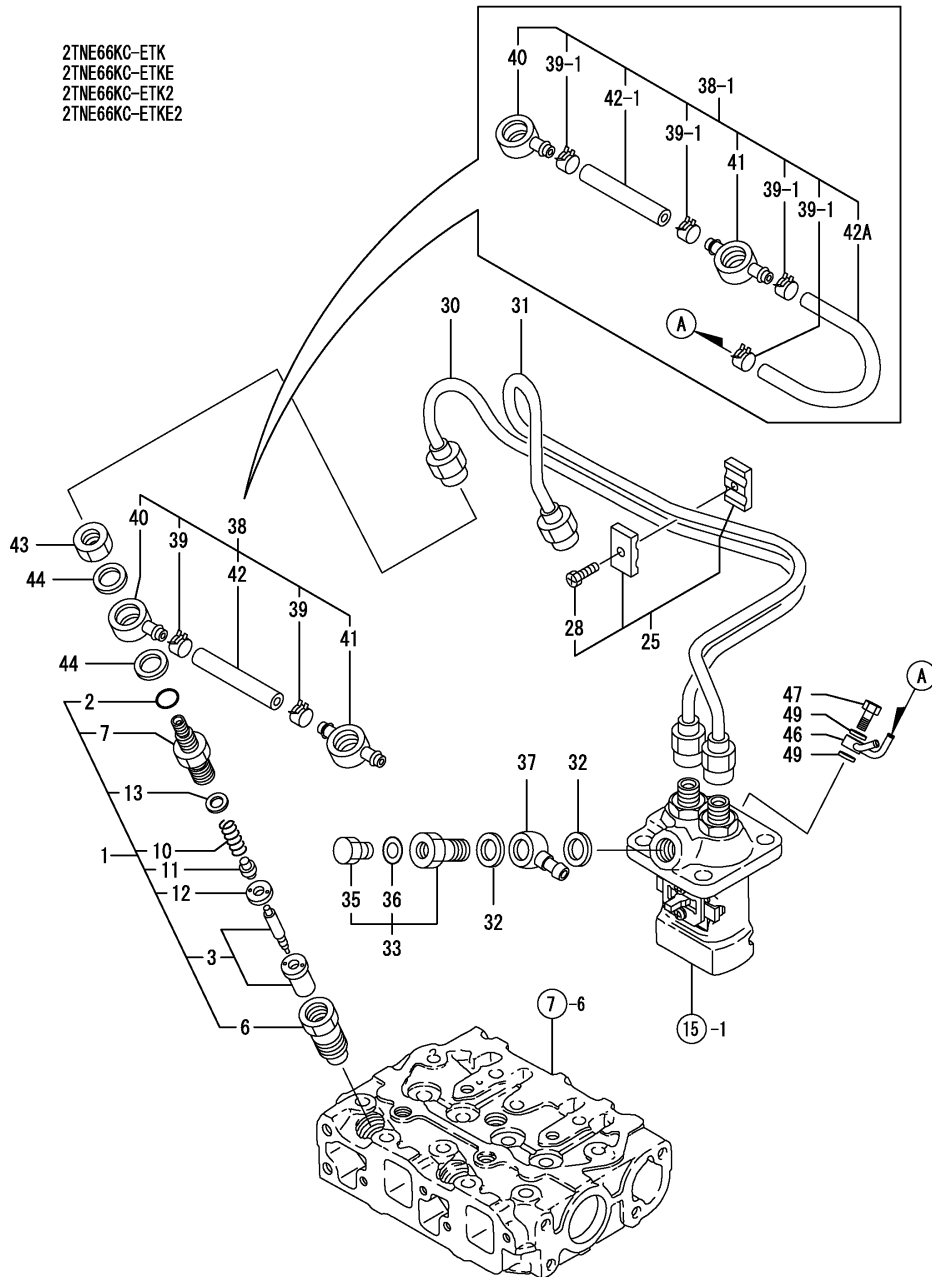


Remarks
(1) SELECTIVE PARTS: CERTAIN THE CLASSIFICATION MARK, THEN PLACE YOUR ORDER(REFER TO ILLUSTRATION)
(2) A(COLOR)=REF.NO.71-1 BROWN,71-2 BLUE.

REF.	LEV.	PARTS NO.	DESCRIPTION	QTY						I	R
				(A)	(B)	(C)	(D)	(E)	(F)		
			(C=EA15213)		(E=EA44104)		(F=EA23095)				
I	147	1	26116-060304 BOLT M 6X 30 PLATED	1	1	1	1	1	1		
I	147-1	1	119266-61460 BOLT,LOW IDLE SET			1		1	1	N	
			(C=EA12269)		(E=EA27981)		(F=EA23095)				
I	148	1	22190-060003 SEAL WASER 6	1	1	1	1	1	1		
I	148-1	1	22190-060003 SEAL WASER 6	2	2	2	2	2	2	K	
			(A=*2001.01) (B=EA00006) (C=EA10376) (D=EA00005)		(E=EA20778)		(F=EA21173)				
I	148-2	1	22190-060003 SEAL WASER 6		1		1	1	1	K	
			(C=EA11168)		(E=EA24346)		(F=EA23095)				
I	149	1	121465-59950 BOLT M 6X 16, PLATED	1	1	1	1	1	1		
I	154	1	119656-66910 HOOK	1	1	1	1	1	1		
I	155	1	119621-66950 COVER(SORENOID)							1	
I	156	1	119660-61150 LINK L=89.0(RED)	1	1	1	1	1	1		1
I	156-1	1	119660-61151 LINK L=89.0(RED)			1		1		R	1
			(C=EA12749)		(E=EA23058)						
I	157	1	119285-61140 LINK (L=89.0)							1	1
I	157-1	1	119285-61141 LINK							1	R 1
											(F=EA23094)
I	158	1	26756-060002 LOCK NUT 6	1	1	1	1	1	1	1	W
			(A=EXXX) (B=EXXX) (C=EXXX) (D=EXXX) (E=EXXX) (F=EXXX)								
I	159	1	129100-61930 NUT, CAP	1	1	1	1	1	1	1	W
			(A=*2001.01) (B=EA00006) (C=EA10376) (D=EA00005) (E=EA20778) (F=EA21173)								
I	160	1	129209-61970 PLATE	1	1	1	1	1	1	1	W
			(A=*2001.01) (B=EA00006) (C=EA10376) (D=EA00005) (E=EA20778) (F=EA21173)								
I	161	1	119600-66840 NUT, CAP	1	1	1	1	1	1	1	W
			(A=*2001.01) (B=EA00006) (C=EA10376) (D=EA00005) (E=EA20778) (F=EA21173)								
I	161-1	1	119285-66600 CAPNUT M6			1		1	1	S	
			(C=EA11168)		(E=EA24346)		(F=EA23095)				
I	162	1	23414-120016 GASKET 12	1	1	1	1	1	1	1	W
			(A=*2001.01) (B=EA00006) (C=EA10376) (D=EA00005) (E=EA20778) (F=EA21173)								
I	163	1	124250-03640 SCREW, STOP							1	W
											(F=EA21173)
I	164	1	119640-61400 PLUG							1	W
											(F=EA21173)
I	171	1	119285-66620 GASKET M6			1		1	1	1	W
			(C=EA11168)		(E=EA24346)		(F=EA23095)				

(A)=2TNE66KC-ETK
(B)=2TNE66KCETKE
(C)=2TNE66KCETK2

(D)=2TNE66KETKE2
(E)=3TNE66KC-ETK
(F)=3TNE66KCETKU



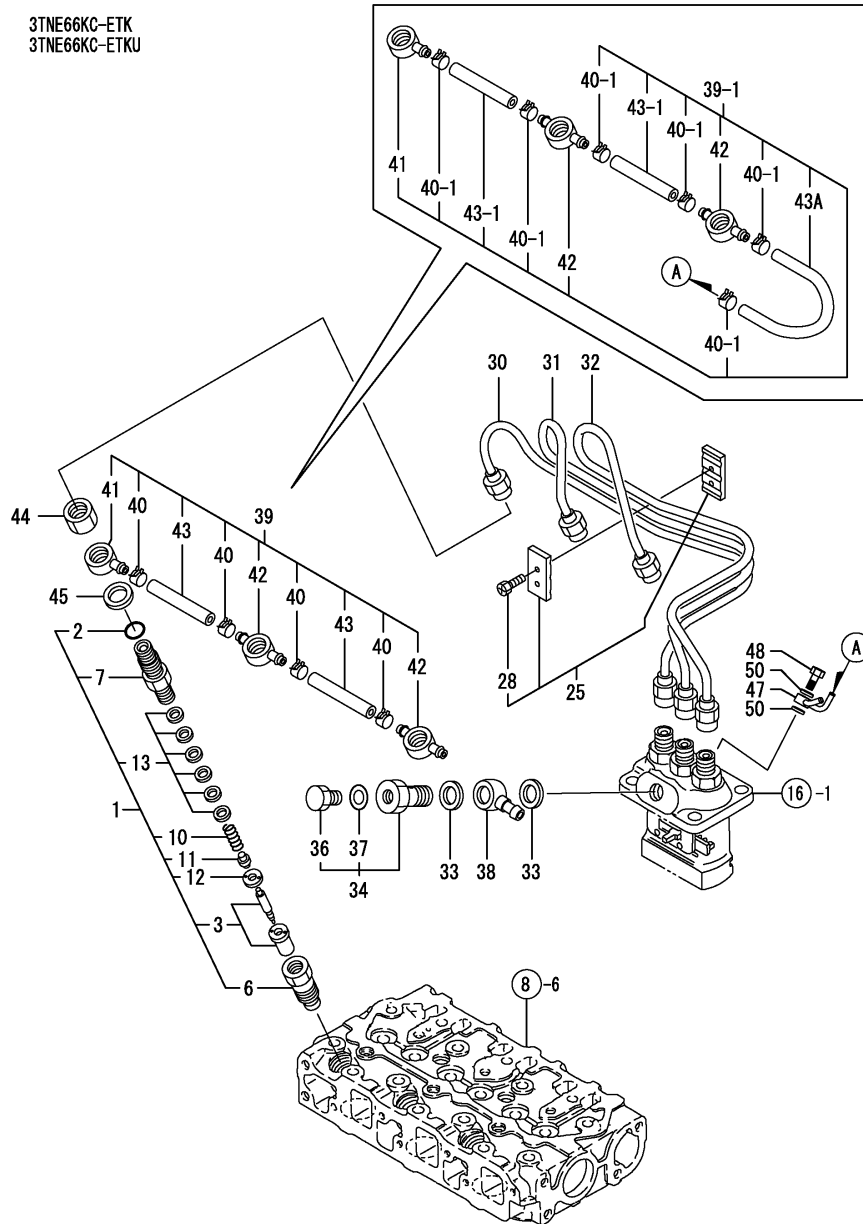
2TNE66KC-ETK
2TNE66KC-ETKE
2TNE66KC-ETK2
2TNE66KC-ETKE2

REF.	LEV.	PARTS NO.	DESCRIPTION	QTY						I	R
				(A)	(B)	(C)	(D)	(E)	(F)		
1	1	719255-53100	FUEL INJECT.VALVE AS	2	2	2	2				
2	2	129155-61830	O-RING S10	2	2	2	2				
3	2	119620-53000	NOZZLE ASSY,F.INJECT	2	2	2	2				
6	2	119620-53080	NUT, VALVE W/CASE	2	2	2	2				
7	2	119255-53100	HOLDER,NOZZLE	2	2	2	2				
10	2	119620-53120	SPRING, VALVE	2	2	2	2				
11	2	114250-53130	SEAT, NOZZLE SPRING	2	2	2	2				
12	2	119620-53140	SPACER, VALVE STOP	2	2	2	2				
13	2	114250-53400	SHIM PACK	2	2	2	2				
25	1	119305-59120	RETAINER	1	1	1	1				
28	2	129150-59131	BOLT M4X14,HEX.SCKT.	1	1	1	1				
I 30	1	119309-59810	PIPE ASSY, FUEL	1	1	1	1				
I 31	1	119309-59820	PIPE ASSY, FUEL	1	1	1	1				
32	1	22190-120002	SEAL WASHER 12	2	2	2	2				
33	1	103854-59191	BOLT W/PLUG & SEAL	1	1	1	1				
I 33-1	1	105340-59190	BOLT ASSY (C=EA10740)			1					N
I 35	2	124060-59380	PLUG (C=EA10740)	1	1	1	1				Z
I 36	2	22190-060002	SEAL WASHER 6S (C=EA10740)	1	1	1	1				Z
37	1	119285-59850	JOINT 12, PIPE	1	1	1	1				
38	1	119305-59540	PIPE ASSY, FO RETURN	1	1	1	1				
I 38-1	1	119309-59540	PIPE, FUEL RETURN (C=EA10592)			1					R
39	2	124066-59100	CLAMP 8	2	2	2	2				
I 39-1	2	124066-59100	CLAMP 8 (C=EA10592)			4					K
40	2	119260-59520	JOINT (B)	1	1	1	1				
41	2	119260-59530	JOINT (A)	1	1	1	1				
42	2	119260-59550	PIPE, FUEL	1	1	1	1				
I 42-1	2	105025-59550	PIPE, FUEL RETURN (C=EA10592)			1					R
I 42A	2	105425-59550	PIPE, FUEL RETURN (C=EA10592)			1					W
I 42A-1	2	129350-59550	PIPE, FUEL (C=EA10800)			1					N
43	1	119620-59700	NUT	2	2	2	2				
44	1	22190-140002	SEAL WASHER 14S	2	2	2	2				
I 46	1	119309-59570	JOINT (C=EA10592)			1					W
I 47	1	119266-59580	BOLT 8,PIPE JOINT (C=EA10592)			1					W
I 49	1	22190-080002	SEAL WASHER 8S (C=EA10592)			2					W

(A)=2TNE66KC-ETK
(B)=2TNE66KCETKE
(C)=2TNE66KCETKU

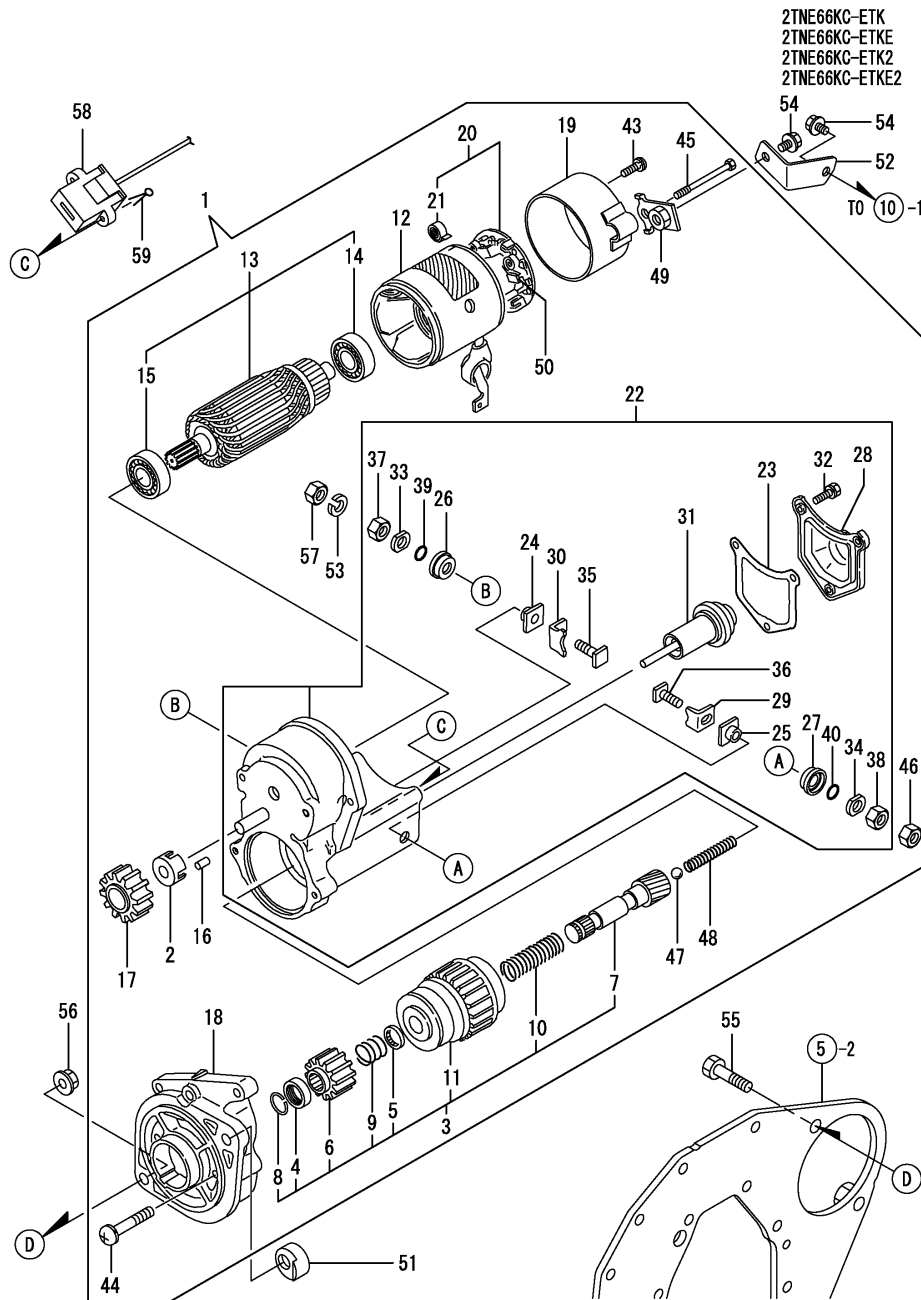
(D)=2TNE66KETKE2
(E)=3TNE66KC-ETK
(F)=3TNE66KCETKU

3TNE66KC-ETK
3TNE66KC-ETKU



REF.	LEV.	PARTS NO.	DESCRIPTION	Q'TY						I	R
				(A)	(B)	(C)	(D)	(E)	(F)		
1	1	719255-53100	FUEL INJECT.VALVE AS					3	3		
2	2	129155-61830	O-RING S10					3	3		
3	2	119620-53000	NOZZLE ASSY,F.INJECT					3	3		
6	2	119620-53080	NUT, VALVE W/CASE					3	3		
7	2	119255-53100	HOLDER,NOZZLE					3	3		
10	2	119620-53120	SPRING, VALVE					3	3		
11	2	114250-53130	SEAT, NOZZLE SPRING					3	3		
12	2	119620-53140	SPACER, VALVE STOP					3	3		
13	2	114250-53400	SHIM PACK					3	3		
25	1	129150-59120	RETAINER, INJ. PIPE					1	1		
28	2	129150-59131	BOLT M4X14,HEX.SCKT.					2	2		
I	30	1	119209-59810	PIPE (1),FUEL INJECT				1	1		
I	31	1	119209-59820	PIPE (2),FUEL INJECT				1	1		
I	32	1	119209-59830	PIPE (3),FUEL INJECT				1	1		
33	1	22190-120002	SEAL WASHER 12					2	2		
34	1	103854-59191	BOLT W/PLUG & SEAL					1	1		
I	34-1	1	105340-59190	BOLT ASSY				1	1	N	
							(E=EA21801)		(F=EA22530)		
I	36	2	124060-59380	PLUG				1	1	Z	
							(E=EA21801)		(F=EA22530)		
I	37	2	22190-060002	SEAL WASHER 6S				1	1	Z	
							(E=EA21801)		(F=EA22530)		
38	1	119285-59850	JOINT 12, PIPE					1	1		
39	1	119260-59540	PIPE ASSY, FUEL OVER					1	1		
I	39-1	1	119209-59540	PIPE, FUEL RETURN				1	1	R	
							(E=EA21681)		(F=EA22530)		
40	2	124066-59100	CLAMP 8					4	4		
I	40-1	2	124066-59100	CLAMP 8				6	6	K	
							(E=EA21681)		(F=EA22530)		
41	2	119260-59520	JOINT (B)					1	1		
42	2	119260-59530	JOINT (A)					2	2		
43	2	119260-59550	PIPE, FUEL					2	2		
I	43-1	2	105025-59550	PIPE, FUEL RETURN				2	2	N	
							(E=EA21681)		(F=EA22530)		
I	43A	2	105425-59550	PIPE, FUEL RETURN				1	1	W	
							(E=EA21681)		(F=EA22530)		
44	1	119620-59700	NUT					3	3		
45	1	22190-140002	SEAL WASHER 14S					3	3		
I	47	1	119309-59570	JOINT				1	1	W	
							(E=EA21681)		(F=EA22530)		
I	48	1	119266-59580	BOLT 8,PIPE JOINT				1	1	W	
							(E=EA21681)		(F=EA22530)		
I	50	1	22190-080002	SEAL WASHER 8S				2	2	W	
							(E=EA21681)		(F=EA22530)		

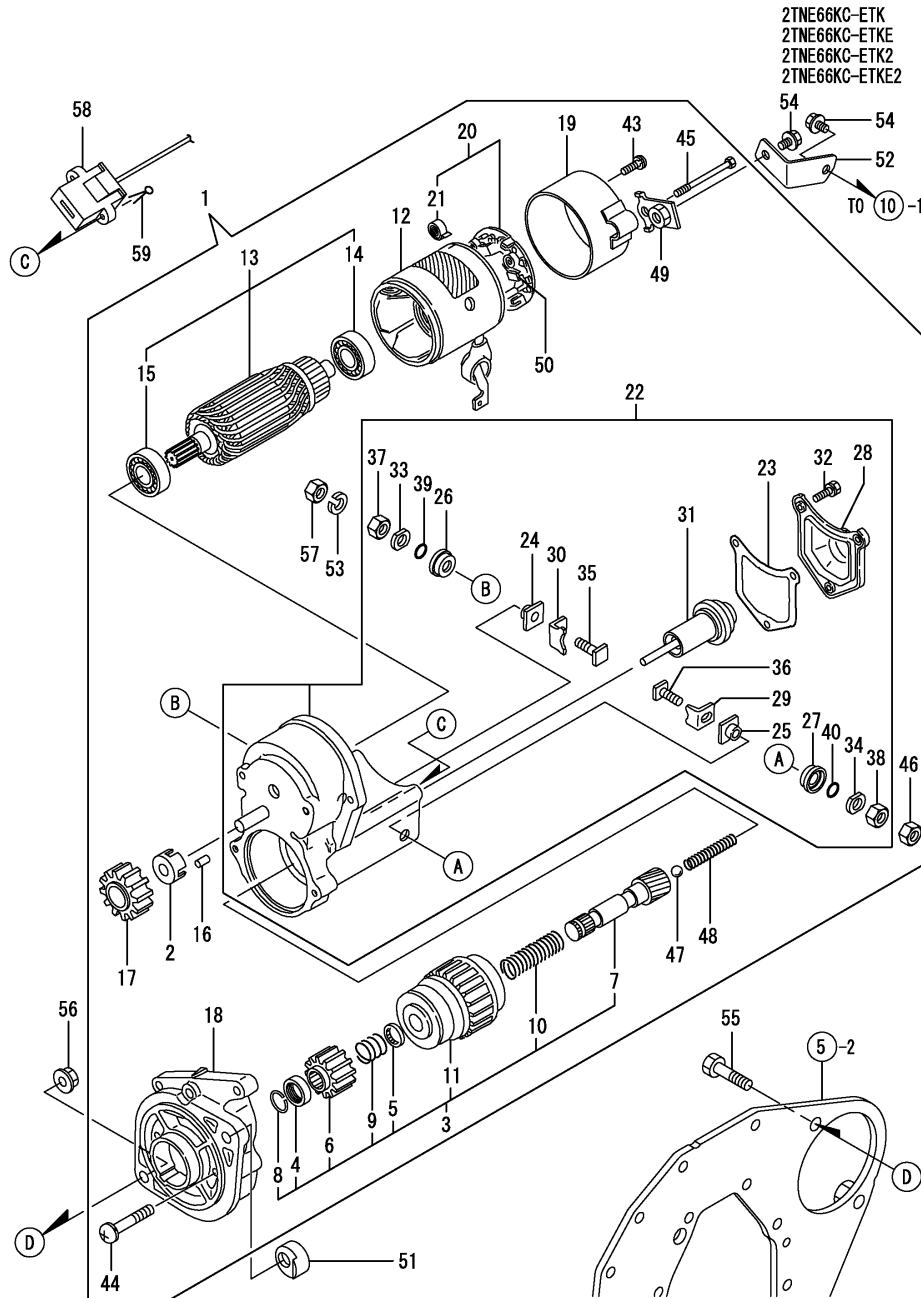
(A)=2TNE66KC-ETK
 (B)=2TNE66KCETKE
 (C)=2TNE66KCETK2

 (D)=2TNE66KETKE2
 (E)=3TNE66KC-ETK
 (F)=3TNE66KCETKU


REF.	LEV.	PARTS NO.	DESCRIPTION	QTY						I	R
				(A)	(B)	(C)	(D)	(E)	(F)		
1	1	119385-77010	STARTER ASSY	1	1	1	1				
2	2	X0280630011	RETAINER	1	1	1	1				
3	2	X0280992761	CLUTCH KIT	1	1	1	1				
4	3	X0280210230	NUT	1	1	1	1				
5	3	X0283270140	RETAINER	1	1	1	1				
6	3	X0283712350	PINION, STARTER	1	1	1	1				
7	3	X0283810040	SHAFT	1	1	1	1				
8	3	X9490721080	RING	1	1	1	1				
9	3	X9491703371	SPRING, COIL	1	1	1	1				
10	3	X9491704260	SPRING	1	1	1	1				
11	3	121120-77930	CLUTCH ASSY, STARTER	1	1	1	1				
12	2	X0281003751	YOKE ASSY	1	1	1	1				
13	2	X0282001531	ARMATURE ASSY	1	1	1	1				
14	3	X9491001360	BEARING	1	1	1	1				
15	3	X9491001860	BALL BEARING	1	1	1	1				
16	2	X0283060061	ROLLER	5	5	5	5				
17	2	X0283711420	PINION	1	1	1	1				
18	2	X0284004910	HOUSING, STARTER	1	1	1	1				
19	2	X0285040631	FRAME ASSY	1	1	1	1				
20	2	X0285100460	HOLDER ASSY, BRUSH	1	1	1	1				
21	3	X9491730461	SPRING	4	4	4	4				
22	2	X1534004890	SWITCH, MAGNETO	1	1	1	1				
23	3	X0534040320	GASKET	1	1	1	1				
I 24	3	X0534490121	BUSH	1	1	1	1				Z
		(A=EXXX) (B=EXXX) (C=EXXX) (D=EXXX)									
I 25	3	X0534490121	BUSH	1	1	1	1				Z
		(A=EXXX) (B=EXXX) (C=EXXX) (D=EXXX)									
I 26	3	X0534490230	BUSH	1	1	1	1				Z
		(A=EXXX) (B=EXXX) (C=EXXX) (D=EXXX)									
I 27	3	X0534490230	BUSH	1	1	1	1				Z
		(A=EXXX) (B=EXXX) (C=EXXX) (D=EXXX)									
28	3	X0535050620	COVER	1	1	1	1				
I 29	3	X0535130241	PLATE (B)	1	1	1	1				Z
		(A=EXXX) (B=EXXX) (C=EXXX) (D=EXXX)									
I 30	3	X0535130320	PLATE (A)	1	1	1	1				Z
		(A=EXXX) (B=EXXX) (C=EXXX) (D=EXXX)									
31	3	X0536600401	PLUNGER	1	1	1	1				
32	3	X9151005141	BOLT W/WASHER	3	3	3	3				
I 33	3	X9490170900	WASHER	1	1	1	1				Z
		(A=EXXX) (B=EXXX) (C=EXXX) (D=EXXX)									
I 34	3	X9490170900	WASHER	1	1	1	1				Z
		(A=EXXX) (B=EXXX) (C=EXXX) (D=EXXX)									
35	3	X9490444500	BOLT	1	1	1	1				
I 35-1	3	X0280999050	BOLT KIT	1	1	1	1				N
		(A=EXXX) (B=EXXX) (C=EXXX) (D=EXXX)									
36	3	X9490441312	BOLT	1	1	1	1				
I 36-1	3	X0280993020	BOLT KIT	1	1	1	1				N
		(A=EXXX) (B=EXXX) (C=EXXX) (D=EXXX)									
I 37	3	X9490502820	NUT	1	1	1	1				Z
		(A=EXXX) (B=EXXX) (C=EXXX) (D=EXXX)									
I 38	3	X9490502820	NUT	1	1	1	1				Z

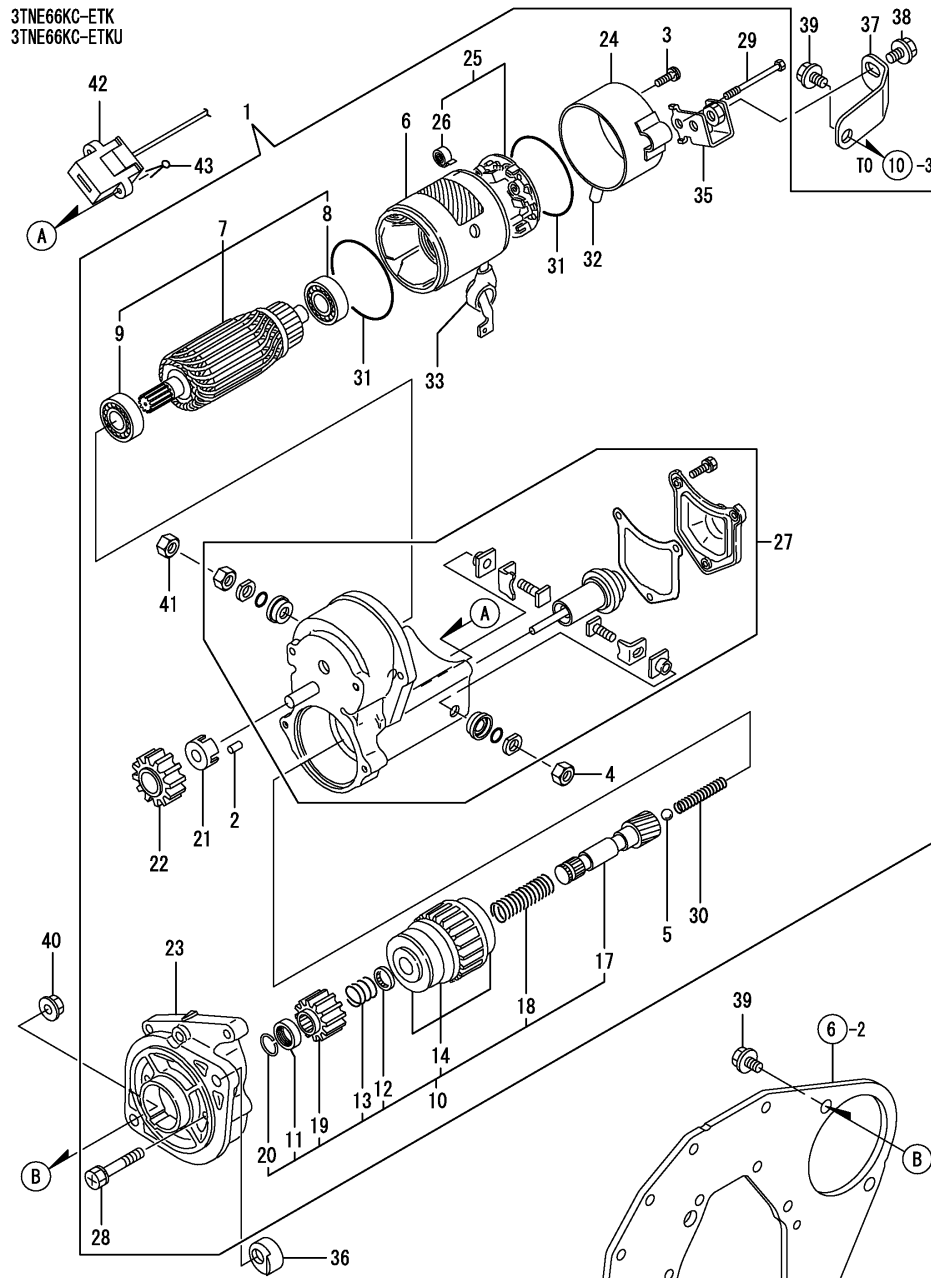
(A)=2TNE66KC-ETK
(B)=2TNE66KCETKE
(C)=2TNE66KCETK2

(D)=2TNE66KETKE2
(E)=3TNE66KC-ETK
(F)=3TNE66KCETKU



REF.	LEV.	PARTS NO.	DESCRIPTION	Q'TY						I	R
				(A)	(B)	(C)	(D)	(E)	(F)		
I	39	(A=EXXX)	(B=EXXX)	(C=EXXX)	(D=EXXX)	1	1	1	1		Z
		(A=EXXX)	(B=EXXX)	(C=EXXX)	(D=EXXX)						
I	40	(A=EXXX)	(B=EXXX)	(C=EXXX)	(D=EXXX)	1	1	1	1		Z
	43	2	X9490071810	SCREW W/WASHER	2	2	2	2			
	44	2	X9490071970	SCREW W/WASHER	2	2	2	2			
I	45	2	X9490471500	BOLT W/WASHER	2	2	2	2			
		2	X9490561370	NUT	1	1	1	1			
	47	2	X9491200240	BALL	1	1	1	1			
	48	2	X9491703380	SPRING	1	1	1	1			
	49	2	X1280090130	STAY	1	1	1	1			
	50	2	X0280993430	STARTERKIT	2	2	2	2			
	51	1	119285-77050	NUT, STARTER	1	1	1	1			
	52	1	119385-77900	SUPPORT, STARTER	1	1	1	1			
	53	1	22217-080000	SPRING WASHER 8	1	1					
	54	1	26106-080122	BOLT M 8X 12 PLATED	2	2	2	2			
	55	1	26156-120302	BOLT M12X 30 PLATED	2	2	2	2			
	56	1	26376-120002	U-NUT M12	1	1	1	1			
	57	1	26756-080002	LOCK NUT M 8 PLATED	1	1	1	1			
	58	1	119643-77900	CONNECTOR	1	1	1	1			
	59	1	22411-200250	COTTER PIN 2.0X25	1	1	1	1			

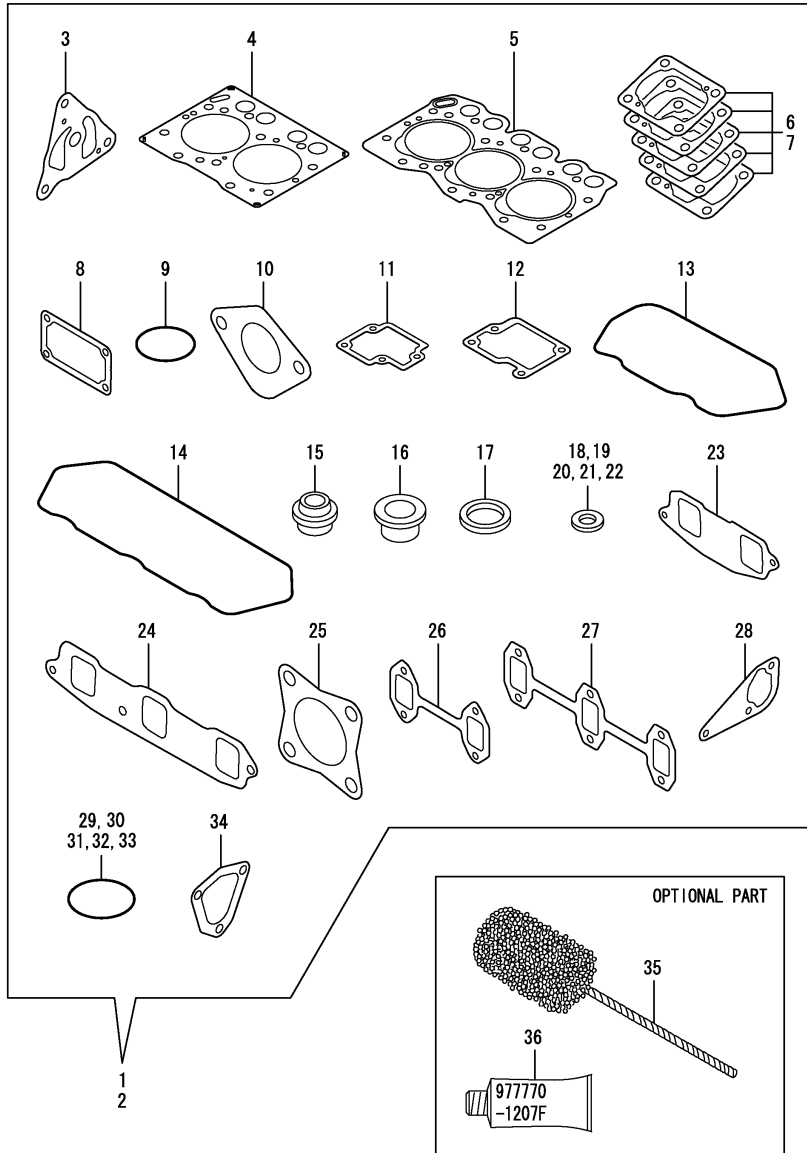
(A)=2TNE66KC-ETK
 (B)=2TNE66KCETKE
 (C)=2TNE66KCETK2

 (D)=2TNE66KETKE2
 (E)=3TNE66KC-ETK
 (F)=3TNE66KCETKU


REF.	LEV.	PARTS NO.	DESCRIPTION	QTY						I	R	
				(A)	(B)	(C)	(D)	(E)	(F)			
1	1	119209-77010	STARTER							1	1	
2	2	X0283060061	ROLLER							5	5	
3	2	129129-77460	SCREW							2	2	
4	2	X9490561370	NUT							1	1	
5	2	X9491200240	BALL							1	1	
6	2	129407-77210	YOKE							1	1	
7	2	129407-77220	ARMATURE ASSY							1	1	
8	3	129129-77230	BEARING							1	1	
9	3	129129-77240	BEARING							1	1	
10	2	121120-77250	STARTER ASSY							1	1	
11	3	X0280210230	NUT							1	1	
12	3	X0283270140	RETAINER							1	1	
13	3	129407-77410	SPRING							1	1	
14	3	129129-77390	CLUTCH ASSY, STARTER							1	1	
17	3	129129-77400	SHAFT							1	1	
18	3	129129-77410	SPRING, COIL							1	1	
19	3	X0283711770	PINION							1	1	
20	3	129129-77430	RING							1	1	
21	2	129129-77260	RETAINER							1	1	
22	2	129129-77270	PINION							1	1	
23	2	119209-77280	HOUSING							1	1	
24	2	129407-77290	FRAME							1	1	
25	2	129407-77300	HOLDER ASSY							1	1	
26	3	X9491730461	SPRING							4	4	
27	2	119209-77310	SWITCH ASSY							1	1	
28	2	129129-77320	BOLT							2	2	
29	2	129407-77330	BOLT,W/WASHER							2	2	
30	2	129129-77340	SPRING							1	1	
31	2	129129-77350	O-RING							2	2	
32	2	129129-77362	COVER							1	1	
33	2	129129-77380	CAP							1	1	
35	2	119209-77460	STAY							1	1	
I 35-1	2	X0280096160	STAY							1	1	N
								(E=EXXX)		(F=EXXX)		
36	1	119285-77050	NUT, STARTER							1	1	
37	1	119285-77900	SUPPORT, STARTER							1	1	
38	1	26106-080122	BOLT M 8X 12 PLATED							2	2	
39	1	26156-120302	BOLT M12X 30 PLATED							2	2	
40	1	26376-120002	U-NUT M12							1	1	
41	1	26756-080002	LOCK NUT M 8 PLATED							1	1	
42	1	119643-77900	CONNECTOR							1	1	
43	1	22411-200250	COTTER PIN 2.0X25							1	1	

(A)=2TNE66KC-ETK
(B)=2TNE66KCETKE
(C)=2TNE66KCETK2

(D)=2TNE66KETKE2
(E)=3TNE66KC-ETK
(F)=3TNE66KCETKU



REF.	LEV.	PARTS NO.	DESCRIPTION	QTY						I	R
				(A)	(B)	(C)	(D)	(E)	(F)		
1	1	724097-92600	GASKET SET	1	1	1	1				1
2	1	724190-92600	GASKET SET							1	1
3	2	119660-32020	GASKET, L.O.PUMP	1	1	1	1	1	1	1	
4	2	119309-01330	GASKET, CYL. HEAD	1	1	1	1				
5	2	119265-01341	GASKET, CYL. HEAD							1	1
6	2	119305-01950	SHIM PACK	1	1	1	1				
7	2	119623-01950	SHIM PACK							1	1
8	2	119660-01562	GASKET, (NON-ASB.)	1	1	1	1	1	1	1	
9	2	24311-000320	O-RING 1A P-32.0	2	2	2	2	2	2	2	
10	2	121520-01851	GASKET, (NON-ASB.)	1	1	1	1	1	1	1	
11	2	119305-03031	GASKET, PLATE	1	1	1	1				
12	2	119260-03031	GASKET, (NON-ASB.)							1	1
13	2	124097-11311	GASKET, BONNET	1	1	1	1				
14	2	124190-11311	GASKET, BONNET							1	1
15	2	119260-11340	SEAL, VALVE STEM	4	4	4	4	4	6	6	
16	2	119600-11450	PROTECTOR, NOZZLE	2	2	2	2	2	3	3	
17	2	119600-11460	GASKET, NOZZLE	4	4	4	4	4	6	6	
18	2	22190-060002	SEAL WASHER 6S	1	1	1	1	1	1	1	
19	2	22190-060003	SEAL WASER 6	1	1	1	1	1	1	1	
20	2	22190-120002	SEAL WASHER 12	1	1	1	1	1	1	1	
21	2	22190-120002	SEAL WASHER 12	2	2	2	2	2	2	2	
22	2	22190-140002	SEAL WASHER 14S	2	2	2	2	2	3	3	
23	2	119326-12111	GASKET	1	1	1	1				
24	2	119270-12110	GASKET, SUC.MANIFOLD							1	1
25	2	121000-13201	GASKET, SILENCER	1		1			1	1	
26	2	119305-13110	GASKET, EXH.MANIFOLD	1	1	1	1				
27	2	119260-13110	GASKET, EXH.MANIFOLD							1	1
28	2	119260-42021	GASKET, C.W.	1	1	1	1	1	1	1	
29	2	24321-000350	O-RING 1A G-35.0	1	1				1	1	
30	2	24311-000120	O-RING 1A P 12.0	4	4	4	4	4	4	4	
31	2	119209-35030	O-RING	1	1	1	1	1	1	1	
32	2	24341-000240	O-RING 1A S-24.0	1	1	1	1	1	1	1	
33	2	24341-000280	O-RING 1A S-28.0	1	1	1	1	1	1	1	
34	2	119660-61071	GASKET, (NON-ASB.)	1	1	1	1	1	1	1	
35	1	129400-92400	FLEX HORN	1	1	1	1	1	1	1	1
36	1	977770-1207F	GASKET.LIQUID	1	1	1	1	1	1	1	1

Remarks
(1) OPTIONAL PART.

Part Number Index

All parts are stipulated in the order of part numbers.

(Depending on the area in which the part is used.)

This index will display the location of the part according to each part number.

PARTS No. INDEX

PARTS No.	Fig.	Ref.No.
103854-59191	18	33
	19	34
105010-11230	7	28
		32
	8	34
		38
105025-59550	18	42 -1
	19	43 -1
105311-01090	1	12
	2	12
105340-59190	18	33 -1
	19	34 -1
105425-59550	18	42 A
	19	43 A
105546-51330	15	24
	16	25
114250-11120	7	17
	8	17
114250-11180	7	18
	8	18
114250-53130	18	11
	19	11
114250-53400	18	13
	19	13
118400-03060	8	51
119209-01550	3	34
	4	38
119209-01580	3	1 -1
	4	1 -1
119209-01590	3	1
	4	1
119209-01780	6	19
119209-01790	6	12
119209-01791	6	12 -1
119209-01810	6	31
119209-11331	8	45
119209-21580	12	14
119209-21650	12	9
119209-22080	12	21
119209-22081	12	21 -1
119209-22500	12	23
119209-22900	12	39
119209-22901	12	39 -1
119209-22910	12	50
119209-22911	12	50 -1
119209-22950	12	41
119209-22960	12	52
119209-35030	13	39
	22	31
119209-42140	14	31

PARTS No.	Fig.	Ref.No.
119209-42290	14	19
119209-42320	14	13
119209-49520	14	26
119209-49530	14	28
119209-49531	14	28 -1
119209-51300	15	21
	16	22
119209-59540	19	39 -1
119209-59810	19	30
119209-59820	19	31
119209-59830	19	32
119209-77010	21	1
119209-77280	21	23
119209-77310	21	27
119209-77460	21	35
119225-14210	11	19
119225-34810	13	16
119225-35300	13	27
119225-51100	15	3
	16	4
119232-61540	17	46
119245-66010	17	76
119255-53100	18	7
	19	7
119260-01510	3	15
	4	15
119260-02020	1	5
	2	5
119260-02800	1	13
	2	13
119260-02930	1	16
	2	16
119260-03020	8	47
119260-03031	8	48
	22	12
119260-07900	7	3
	8	3
119260-11100	7	15
	8	15
119260-11110	7	16
	8	16
119260-11200	8	26
119260-11240	8	27
119260-11260	7	38
	8	30
119260-11270	7	40
	8	31
119260-11280	7	41
	8	32
119260-11340	7	21

PARTS No.	Fig.	Ref.No.
119260-11340	8	21
	22	15
119260-11370	7	22
	8	22
119260-11800	7	10
	8	9
119260-13100	10	3
119260-13110	10	4
	22	27
119260-14100	11	8
119260-14200	11	1
119260-14400	11	2
119260-14580	11	4
119260-21200	12	59
119260-23910	12	32
119260-25100	11	12
119260-34810	13	17
119260-35081	13	38
119260-42021	14	2
	22	28
119260-59520	18	40
	19	41
119260-59530	18	41
	19	42
119260-59540	19	39
119260-59550	18	42
	19	43
119265-01250	1	9
	2	9
119265-01341	2	22
	22	5
119265-11260	7	39
	8	42
119265-13800	10	11 -1
119265-13810	10	10 -1
119265-13830	10	8 -1
119265-13840	10	7 -1
119265-22300	12	19
		37
		48
119265-23100	12	29
119265-23200	12	33
119266-01200	1	21
	2	21
119266-02410	1	19
	2	19
119266-51900	15	45
	16	45
119266-59580	18	47
	19	48

PARTS No.	Fig.	Ref.No.
119266-61460	17	147 -1
119270-12110	9	2
	22	24
119285-01490	4	13
119285-01580	6	5
119285-01600	6	2
119285-01601	5	2
119285-01730	5	12
	6	14
	9	7
	13	42
	14	27
119285-01731	5	12 -1
	6	14 -1
	9	7 -1
	13	42 -1
	14	27 -1
119285-01741	6	16
119285-01990	1	11
	2	11
119285-03140	7	1
	8	1
119285-07900	7	4
	8	4
119285-11990	7	12
	8	14
119285-12730	9	6
119285-32000	13	1
119285-34821	13	14
119285-35090	13	37
119285-39600	13	41
119285-42051	14	7
119285-42120	14	6
119285-42270	14	12
119285-42300	14	20
119285-59850	18	37
	19	38
119285-61131	17	16 -1
119285-61140	17	157
119285-61141	17	157 -1
119285-61200	17	18 -1
119285-61210	17	17 -1
119285-61220	17	18
119285-61500	17	30
119285-61510	17	29
119285-66080	17	56
119285-66090	17	57
119285-66120	17	14
119285-66121	17	14 -1
119285-66130	17	16

PARTS No. INDEX

PARTS No.	Fig.	Ref.No.
119285-66600	17	161 -1
119285-66620	17	171
119285-77050	20	51
	21	36
119285-77900	21	37
119289-49800	14	30
119289-49801	14	30 -1
119305-01950	3	21
	22	6
119305-03020	7	47
119305-03031	7	48
	22	11
119305-11200	7	26
119305-11240	7	35
119305-13100	10	1
119305-13110	10	2
	22	26
119305-14210	11	18
119305-14580	11	3
119305-35151	13	24
119305-51500	15	30
119305-51530	15	32
119305-59120	18	25
119305-59540	18	38
119305-77820	7	58
119309-01330	1	22
	22	4
119309-01550	3	18
119309-03150	7	54
119309-11331	7	45
119309-21590	12	13
119309-21650	12	8
119309-59540	18	38 -1
119309-59570	18	46
	19	47
119309-59810	18	30
119309-59820	18	31
119326-12111	9	1
	22	23
119370-01740	5	17
	6	22
119385-01490	3	13
119385-01790	5	10
119385-01791	5	10 -1
119385-12730	9	3
119385-34801	13	13
119385-34851	13	15
119385-35090	13	36
119385-49310	14	36
119385-49331	14	37

PARTS No.	Fig.	Ref.No.
119385-77010	20	1
119385-77900	20	52
119454-01721	6	11
119489-66500	17	79
119520-03090	7	61
119520-03990	7	62
119600-11450	7	24
	8	23
	22	16
119600-11460	7	25
	8	24
	22	17
119600-61300	17	6
119600-61400	17	7
119600-61541	17	47
119600-61650	17	49
119600-61900	17	54
119600-66020	17	68
119600-66530	17	78 -1
119600-66840	17	161
119609-25050	11	11
119620-01530	17	5 -1
119620-01620	5	5
	6	6
119620-01800	3	3
	4	3
119620-02450	11	5
119620-11350	7	43
	8	60
119620-21500	12	12
119620-21941	12	11
119620-25912	11	14
119620-49290	14	33
119620-51170	15	6
	16	7
119620-51180	15	7
	16	8
119620-51190	15	8
	16	9
119620-51250	15	9
	16	10
119620-51340	15	25
	16	26
119620-51350	15	26
	16	27
119620-51370	15	27
	16	28
119620-51450	15	28
	16	29
119620-51461	16	30

PARTS No.	Fig.	Ref.No.
119620-51510	15	31
	16	32
119620-51640	15	33 -1
	16	34 -1
119620-51650	15	33
		33 A
	16	34
		34 A
119620-51660	15	34
	16	35
119620-51670	15	33 B
		35
	16	34 B
		36
119620-51680	15	36
	16	37
119620-51700	15	37
	16	38
119620-53000	18	3
	19	3
119620-53080	18	6
	19	6
119620-53120	18	10
	19	10
119620-53140	18	12
	19	12
119620-59700	18	43
	19	44
119620-77820	8	57
119621-21680	12	10
119621-61210	17	17
119621-66021	17	77
119621-66500	17	78
119621-66950	17	155
119623-01950	4	21
	22	7
119624-32040	6	24
119626-07900	7	3 -1
	8	3 -1
119629-66510	17	79 -1
119632-61500	17	23 -1
119640-61400	17	164
119640-66051	17	69
119643-77900	20	58
	21	42
119654-66700	17	111
119656-66910	17	154
119660-01551	4	18
119660-01562	3	19
	4	19

PARTS No.	Fig.	Ref.No.
119660-01562	22	8
119660-01570	3	20
	4	20
119660-01640	5	6
	6	7
119660-01821	11	27
119660-01911	3	4
	4	4
119660-25022	11	10
119660-25920	11	25
119660-25930	11	26
119660-32020	13	11
	22	3
119660-35150	13	25
119660-51500	16	31
119660-51530	16	33
119660-61052	17	19
119660-61053	17	19 -1
119660-61054	17	19 -2
119660-61060	17	2
119660-61071	17	3
	22	34
119660-61121	17	13
119660-61122	17	13 -1
119660-61140	17	15
119660-61141	17	15 -1
119660-61150	17	156
119660-61151	17	156 -1
119660-61300	17	11
119660-61341	17	12
119660-61460	17	20
119660-61590	17	28
119660-61901	17	55
119685-61940	17	67
119685-61950	17	70
119717-01800	3	3 -1
	4	3 -1
119840-61870	17	75
119988-61460	17	74
121000-13201	10	5
	22	25
121023-01550	3	31
	4	35
121088-01740	5	13
121088-01751	5	14
121120-77250	21	10
121120-77930	20	11
121450-01560	3	16
	4	16
121465-59950	17	149

PARTS No. INDEX

PARTS No.	Fig.	Ref.No.
121500-12790	9	5
		9
121520-01851	3	28
	4	32
	22	10
121520-01860	3	29
	4	33
121575-66800	17	73
		74 -1
121575-66830	17	73 -1
124060-01050	1	4
	2	4
124060-21600	12	17
124060-59380	18	35
	19	36
124066-59100	18	39
		39 -1
	19	40
		40 -1
124085-01770	5	15
	6	18
		21
124085-02220	5	8
	6	9
124085-11690	14	15
124085-42300	14	20 A
124085-42350	14	21
124085-42360	14	22
124085-42370	14	23
124085-42380	14	24
124097-11311	7	50
	22	13
124097-11390	7	51
124160-01751	3	11
	4	11
	7	46
	8	61
124160-11360	7	55
	8	54
124190-11311	8	50
	22	14
124250-03640	17	163
124450-35110	13	26
124550-66370	17	70 -1
124976-34850	13	18
129100-01580	5	1
	6	1
	12	58
129100-61930	17	159
129129-77230	21	8

PARTS No.	Fig.	Ref.No.
129129-77240	21	9
129129-77260	21	21
129129-77270	21	22
129129-77320	21	28
129129-77340	21	30
129129-77350	21	31
129129-77362	21	32
129129-77380	21	33
129129-77390	21	14
129129-77400	21	17
129129-77410	21	18
129129-77430	21	20
129129-77460	21	3
129150-35350	13	35
129150-59120	19	25
129150-59131	18	28
	19	28
129155-51280	17	65
129155-61480	17	23
129155-61830	18	2
	19	2
129156-61500	17	20 -1
129209-61970	17	160
129224-01770	5	15 -1
	6	18 -1
		21 -1
		42 A-1
129350-59550	18	42 A-1
129400-92400	22	35
129407-77210	21	6
129407-77220	21	7
129407-77290	21	24
129407-77300	21	25
129407-77330	21	29
129407-77410	21	13
129486-01850	6	31 -1
129486-01851	6	31 -2
129486-77952	17	71
129486-77953	17	71 -1
129486-77954	17	71 -2
129795-77800	7	57
	8	56
171008-03990	7	2
	8	2
174307-51460	15	29
174307-51700	17	31
194990-22050	3	26
	4	30
	17	1 D
719209-01560	2	1
719209-11100	8	6

PARTS No.	Fig.	Ref.No.
719209-22080	12	18
719209-22081	12	18 -1
719209-22900	12	36
719209-22901	12	36 -1
719209-22910	12	47
719209-22911	12	47 -1
719209-42000	14	1
719209-51700	16	1
719209-51710	16	1 A
719255-53100	18	1
	19	1
719260-02870	1	23
	2	23
719260-11650	7	27
	8	33
719260-11660	7	31
	8	37
719260-23600	12	34
719265-21700	12	2
719309-01560	1	1
719309-11100	7	6
719309-21700	12	1
719309-51700	15	1
719309-51710	15	1 A
724097-92600	22	1
724190-92600	22	2
977770-1207F	3	37
	4	41
	5	20
	6	30
	22	36
X0280096160	21	35 -1
X0280210230	20	4
	21	11
X0280630011	20	2
X0280992761	20	3
X0280993020	20	36 -1
X0280993430	20	50
X0280999050	20	35 -1
X0281003751	20	12
X0282001531	20	13
X0283060061	20	16
	21	2
X0283270140	20	5
	21	12
X0283711420	20	17
X0283711770	21	19
X0283712350	20	6
X0283810040	20	7
X0284004910	20	18

PARTS No.	Fig.	Ref.No.
X0285040631	20	19
X0285100460	20	20
X0534040320	20	23
X0534490121	20	24
		25
X0534490230	20	26
		27
X0535050620	20	28
X0535130241	20	29
X0535130320	20	30
X0536600401	20	31
X1280090130	20	49
X1534004890	20	22
X9151005141	20	32
X9490071810	20	43
X9490071970	20	44
X9490170900	20	33
		34
X9490441312	20	36
X9490444500	20	35
X9490471500	20	45
X9490502820	20	37
		38
X9490561370	20	46
	21	4
X9490721080	20	8
X9491001360	20	14
X9491001860	20	15
X9491200240	20	47
	21	5
X9491402100	20	39
		40
X9491703371	20	9
X9491703380	20	48
X9491704260	20	10
X9491730461	20	21
	21	26



YANMAR CO.,LTD.